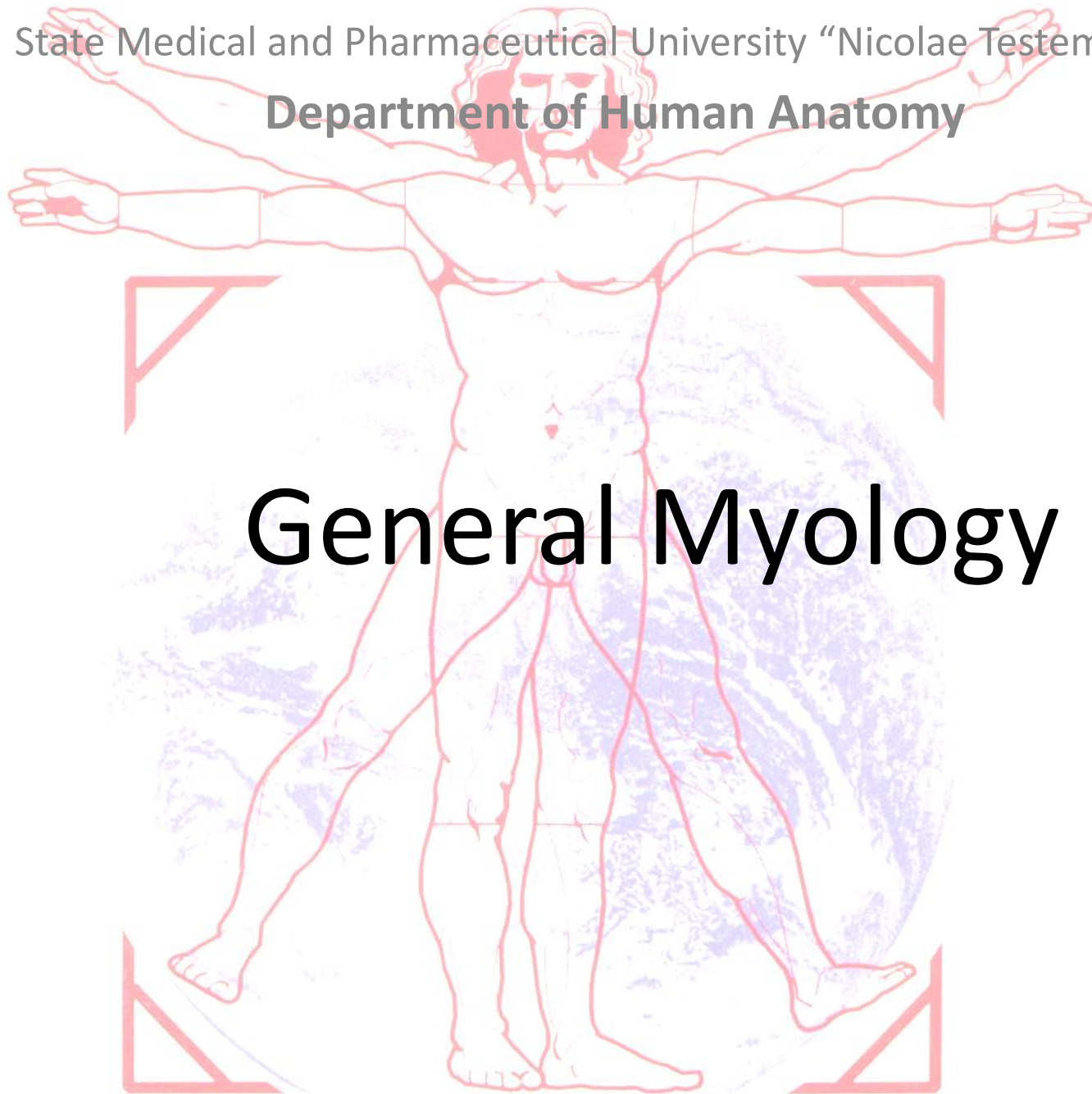
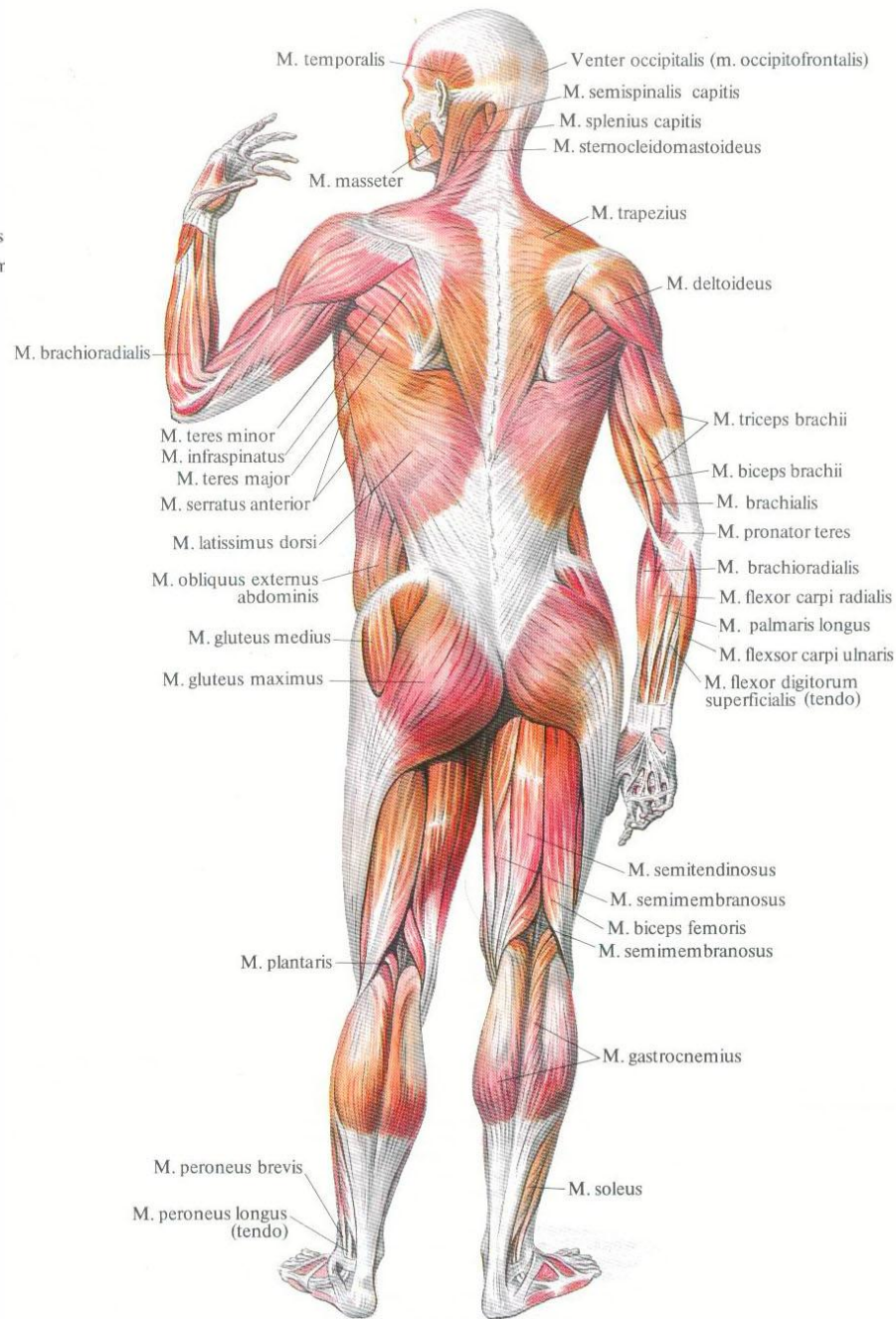
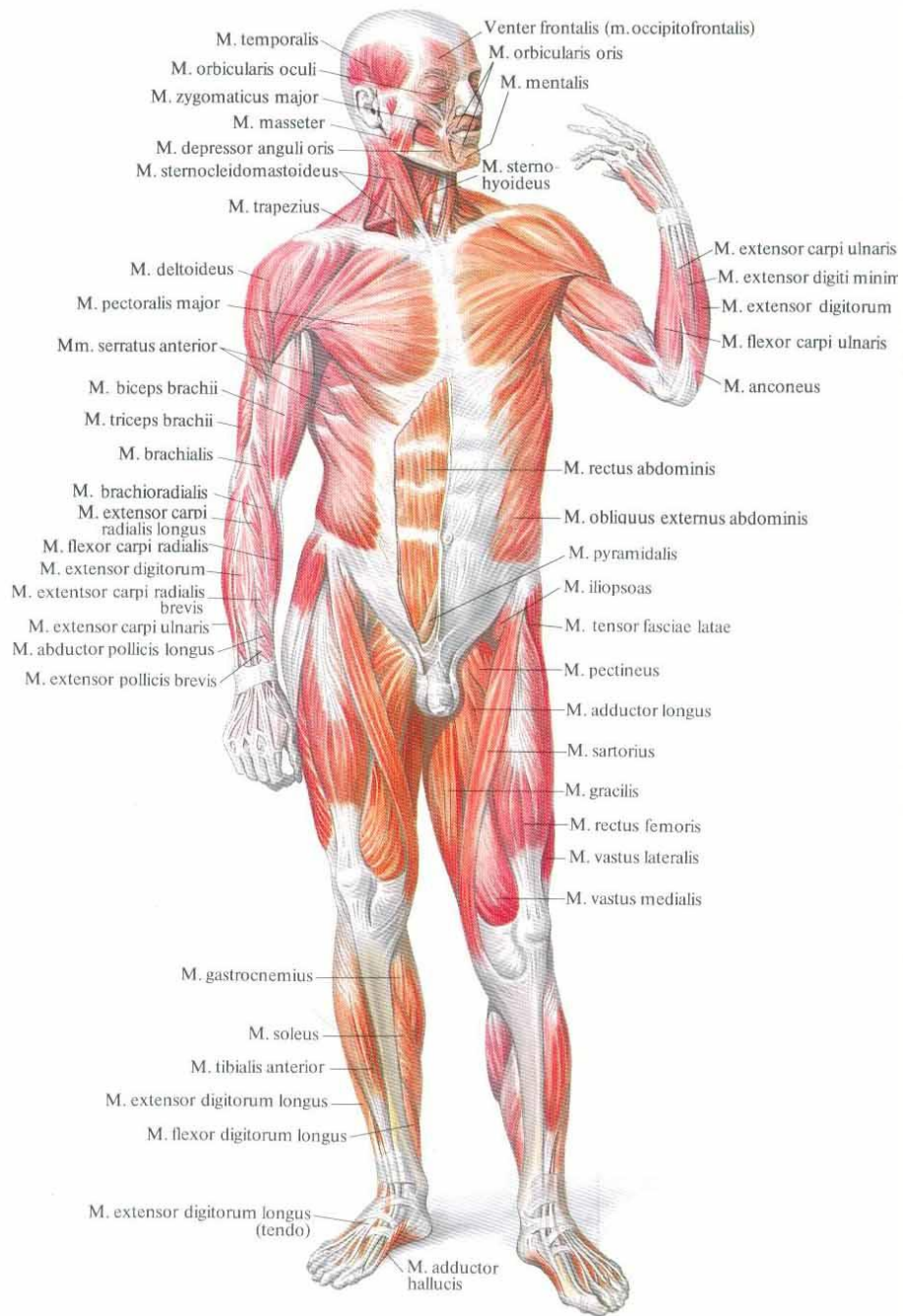


State Medical and Pharmaceutical University “Nicolae Testemițanu”

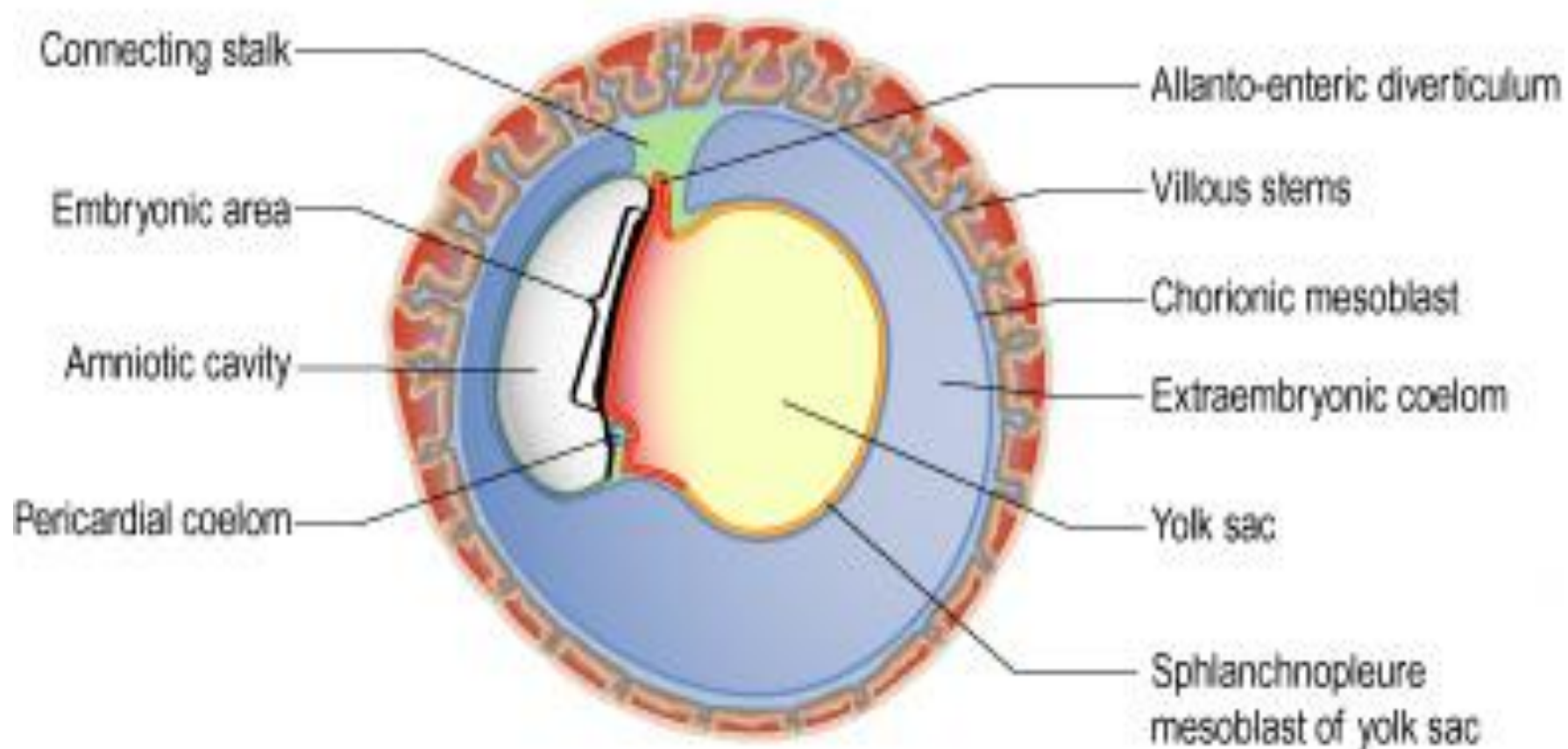
Department of Human Anatomy

General Myology

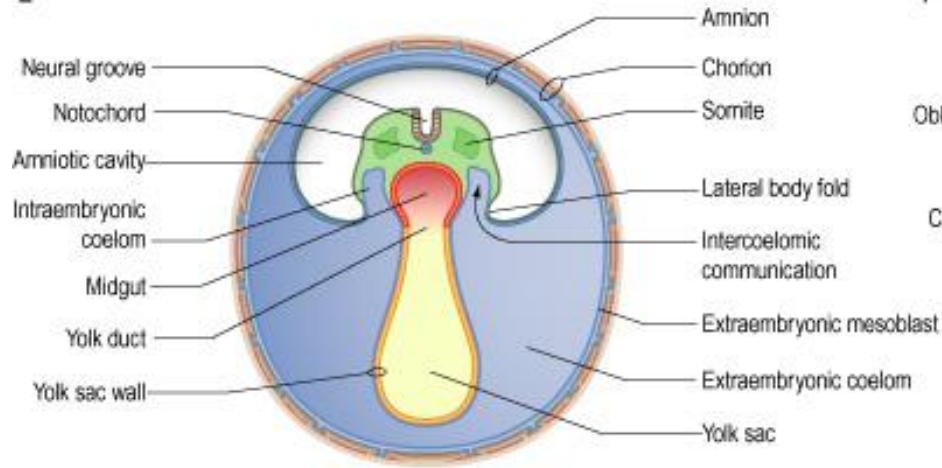




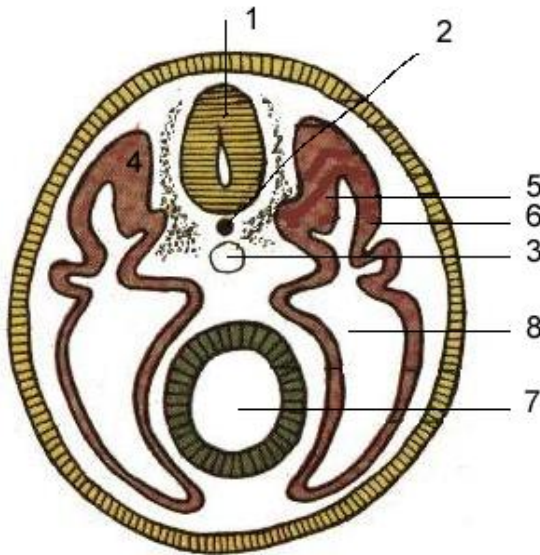
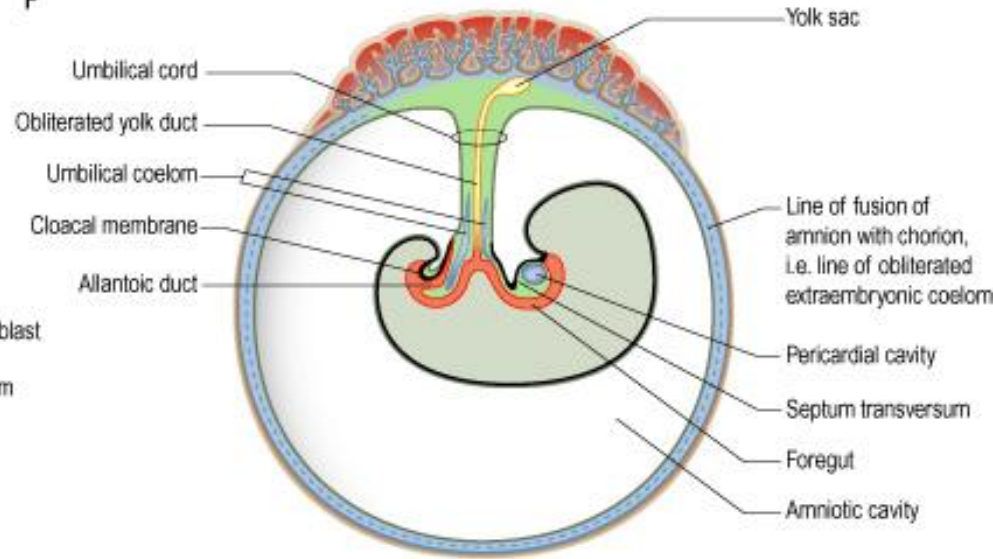
C



E

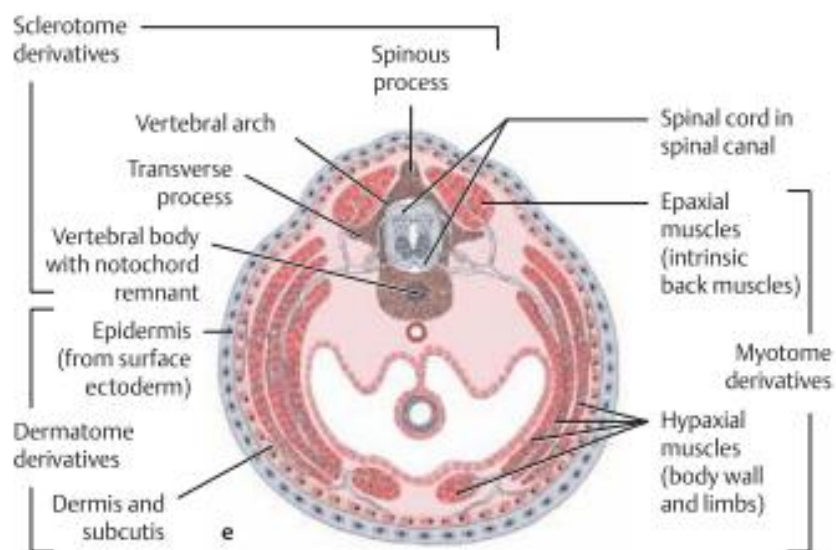
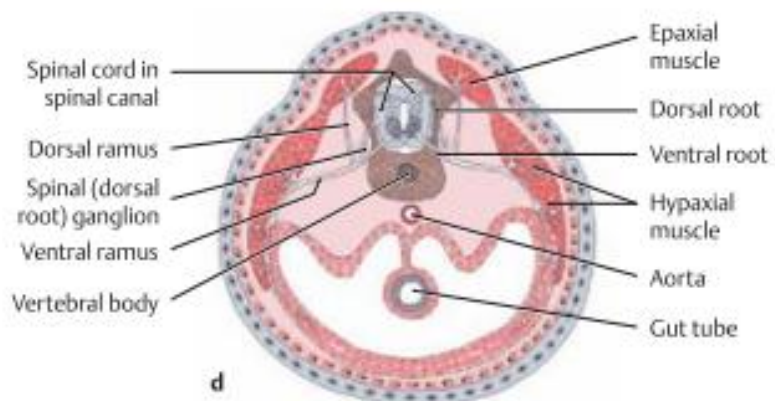
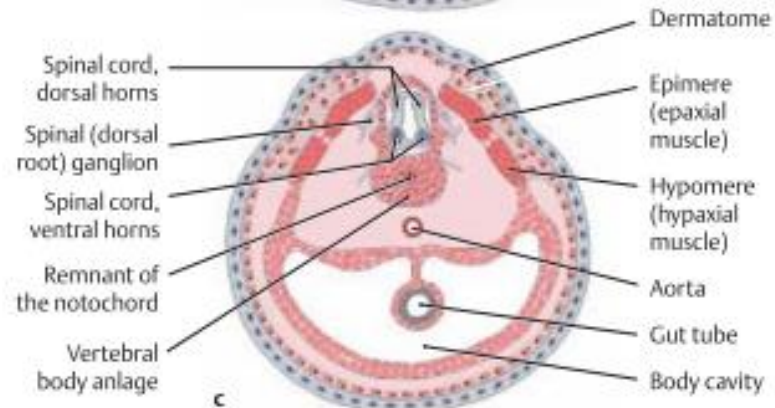
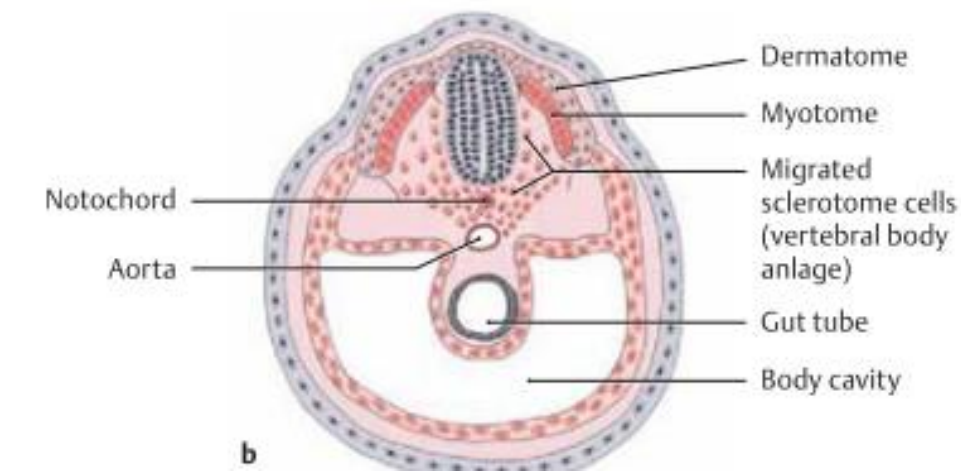
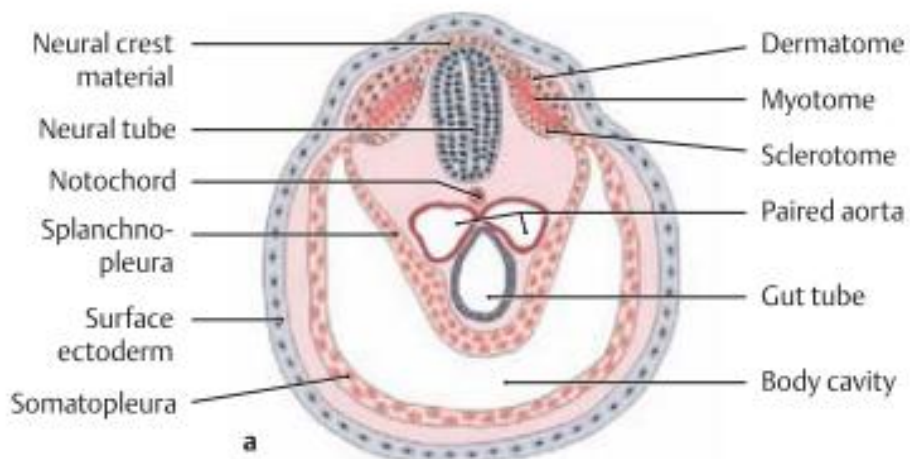


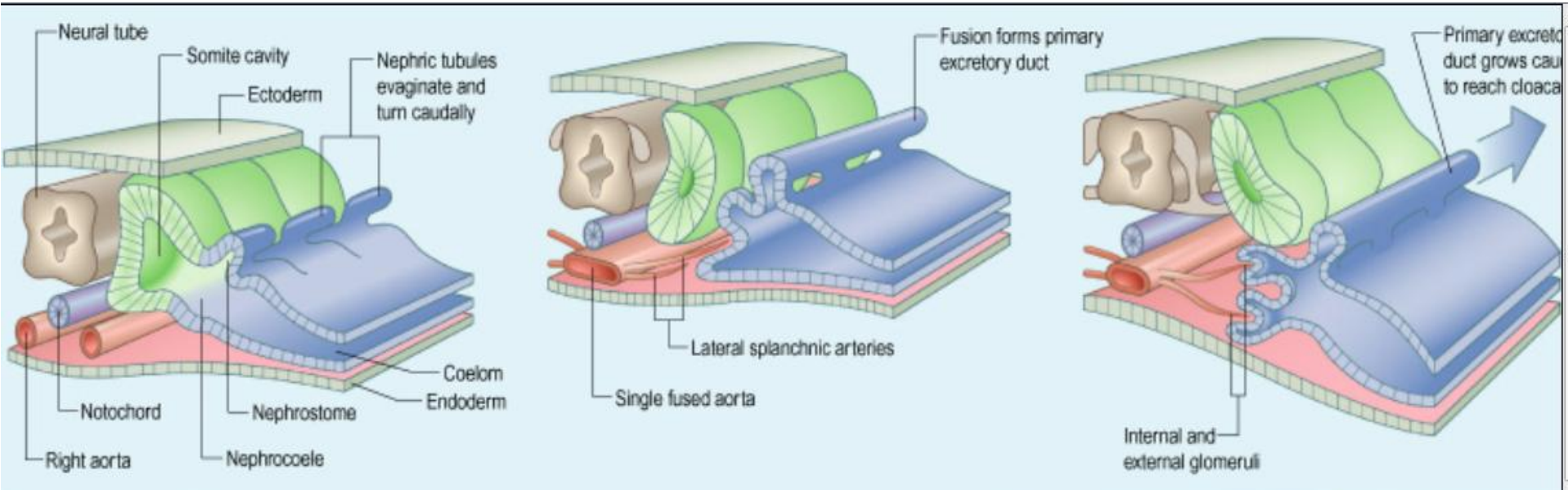
F

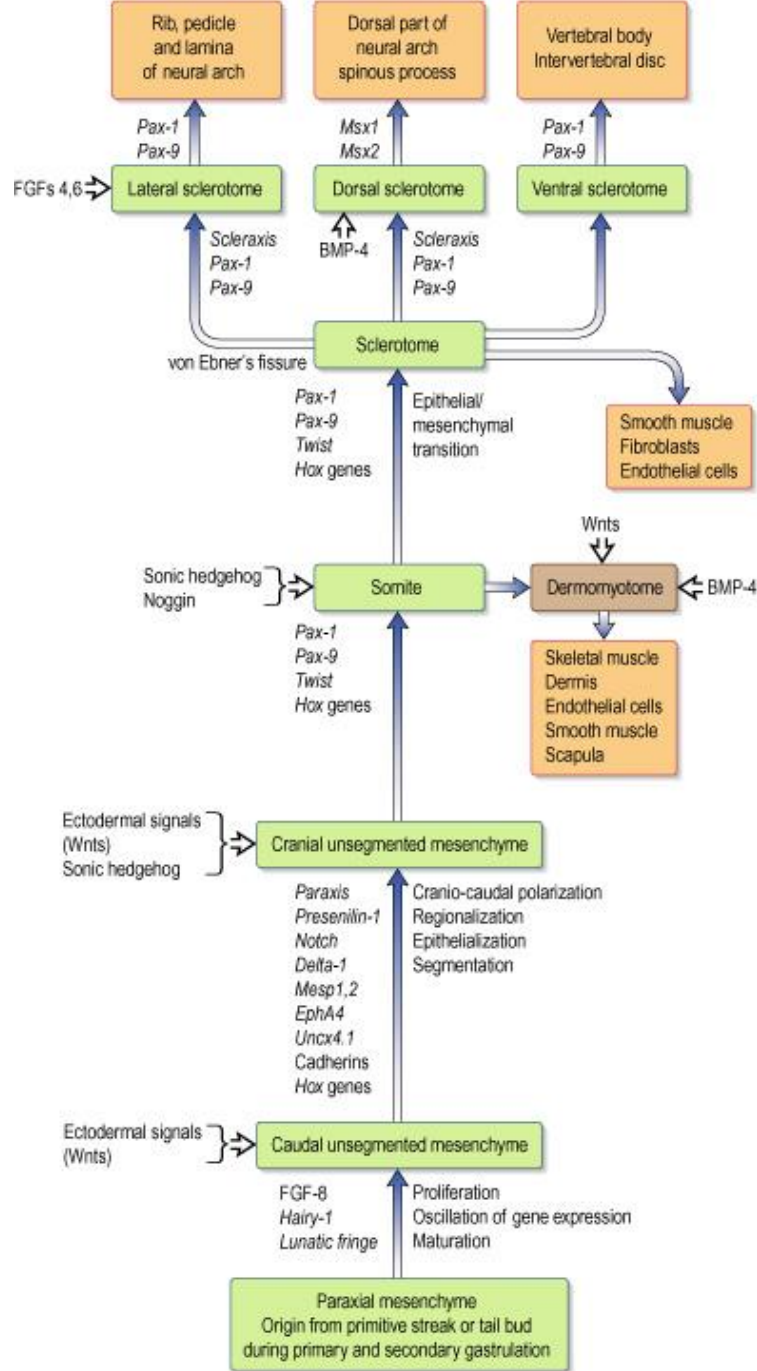


Ltd 2005. Standing: Gray's Anatomy 39e

- **1 – *tubulus neuralis*;**
- **2 – *chorda dorsalis*;**
- **3 – *aorta*;**
- **4 – *sclerotom*;**
- **5 – *myotom*;**
- **6 – *dermatom*;**
- **7 – *intestinum primarium*;**
- **8 – *coeloma (cavitas corporis)*;**
- **9 – *somatopleura*;**
- **10 – *splanchnopleura*.**

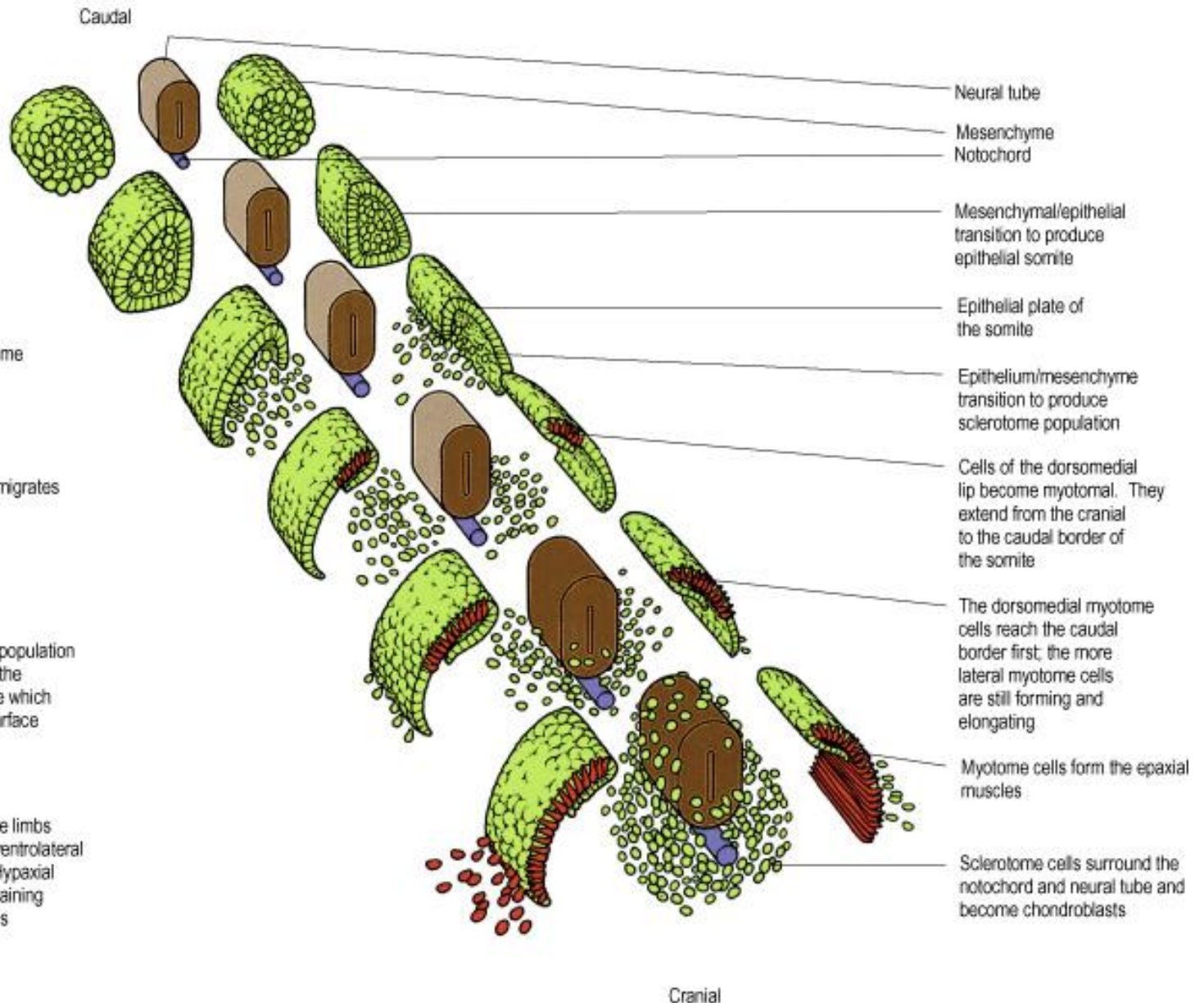






SOMITOGENESIS

- (1) Compaction
- ↓
- (2) Epithelialization
- ↓
- (3) Medial migration of sclerotome portion of somite
- ↓
- (4) The sclerotome population migrates towards the notochord
- ↓
- (5) Formation of the myotome population from the dorsomedial lip of the epithelial plate of the somite which folds back onto its lateral surface
- ↓
- (6) Myoblast populations for the limbs and tongue arise from the ventrolateral edge of specific somites. Hypaxial muscles arise from the remaining epithelial plate of all somites



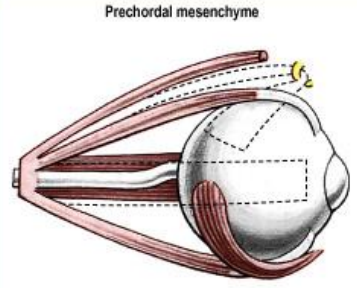
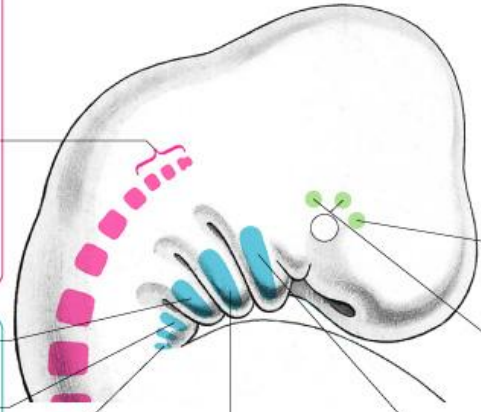




Occipital somites

Muscles: Extrinsic and intrinsic lingual muscles (except palatoglossus)

Nerve: Hypoglossal



Prechordal mesenchyme

Muscles: Levator palpebrae superioris; superior, medial and inferior recti; inferior oblique

Nerve: Oculomotor

Maxillomandibular mesenchyme

Muscles: Superior oblique and lateral rectus

Nerves: Trochlear and abducens

Arch 3
Muscle: Stylopharyngeus
Nerve: Glossopharyngeal

Arch 4
Muscle: Cricothyroid
Nerve: Super laryngeal branch of vagus

Arch 6
Muscle: Other intrinsic laryngeal muscles
Nerve: Recurrent laryngeal branch of vagus



Caudal arches
Remaining palatine muscles and constrictors – precise sources uncertain

Nerve: Cranial accessory via branches of vagus

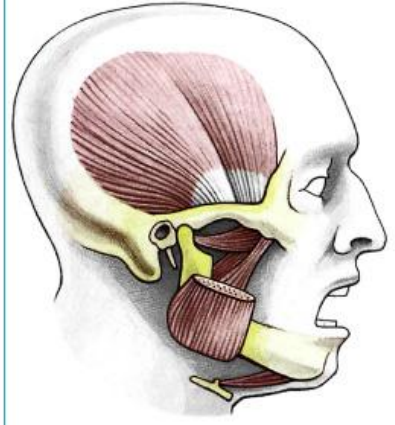
Arch 2
Muscles of facial expression
including auricular muscles, occipitofrontalis, posterior belly of digastric, stylohyoid, stapedius and platysma

Nerve: Facial

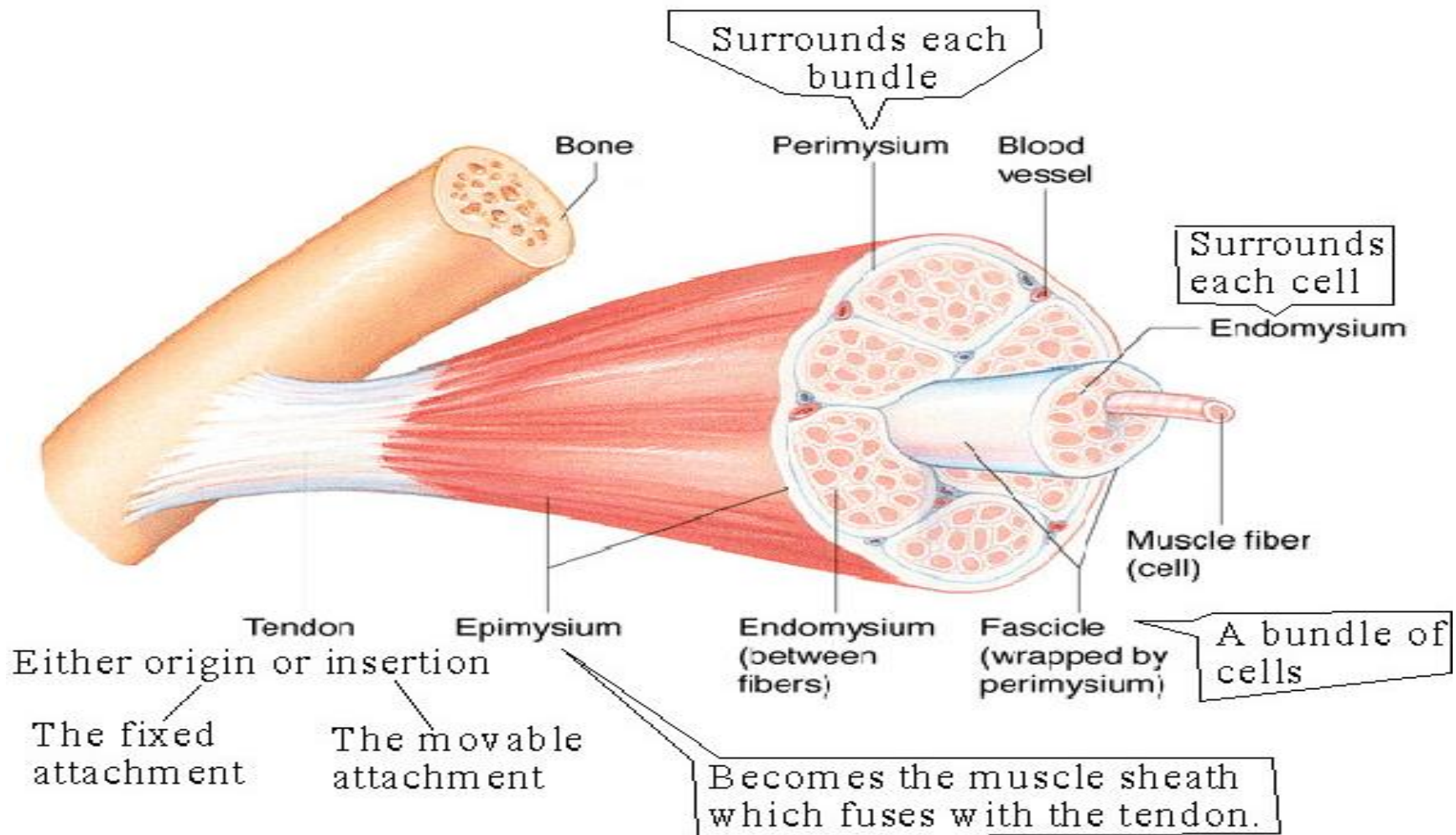


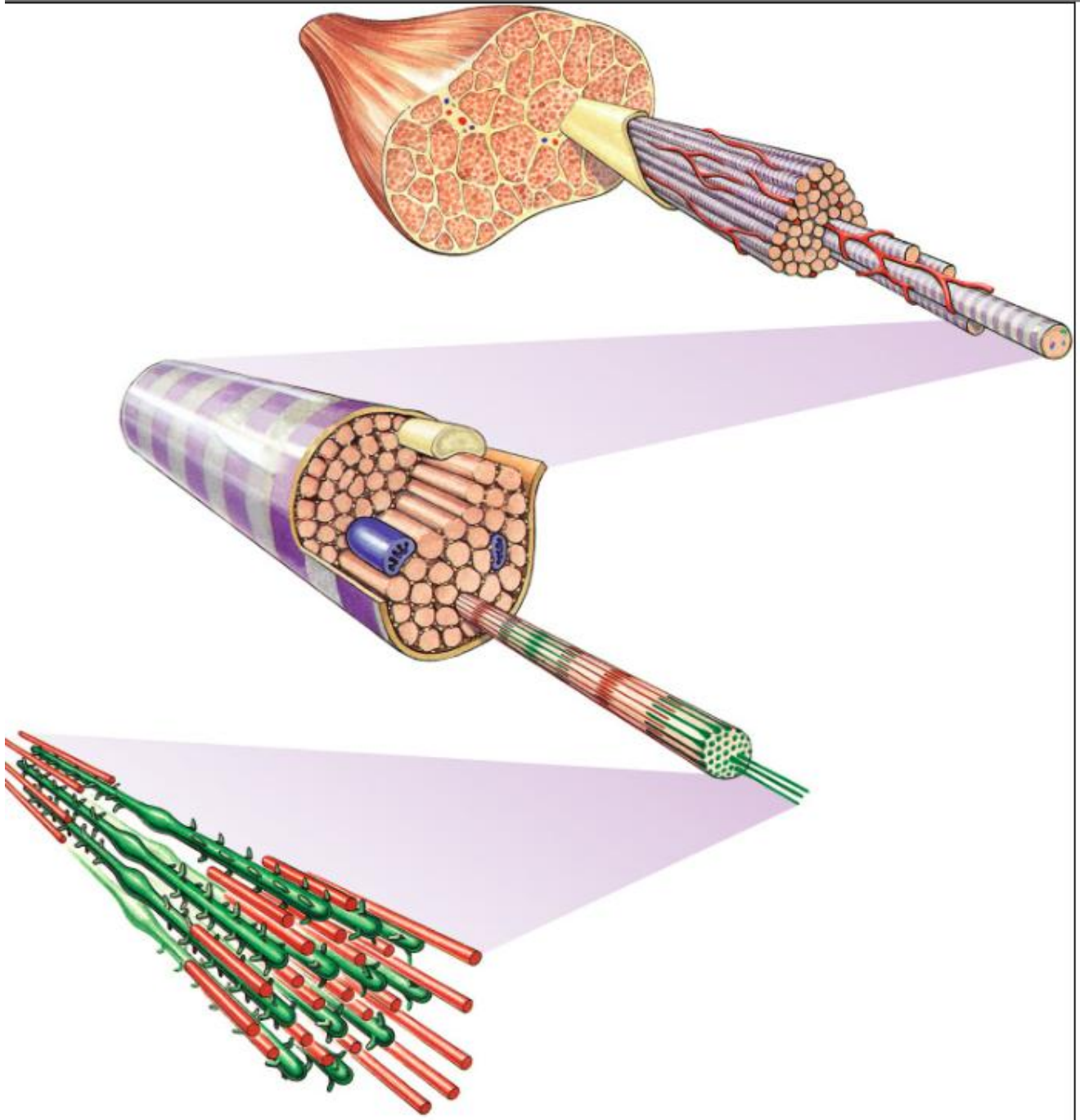
Arch 1
Muscles of mastication
Temporalis, masseter, pterygoids, mylohyoid, anterior belly of digastric, tensor veli palatini

Nerve: Mandibular division of trigeminal



Structure of a Skeletal Muscle

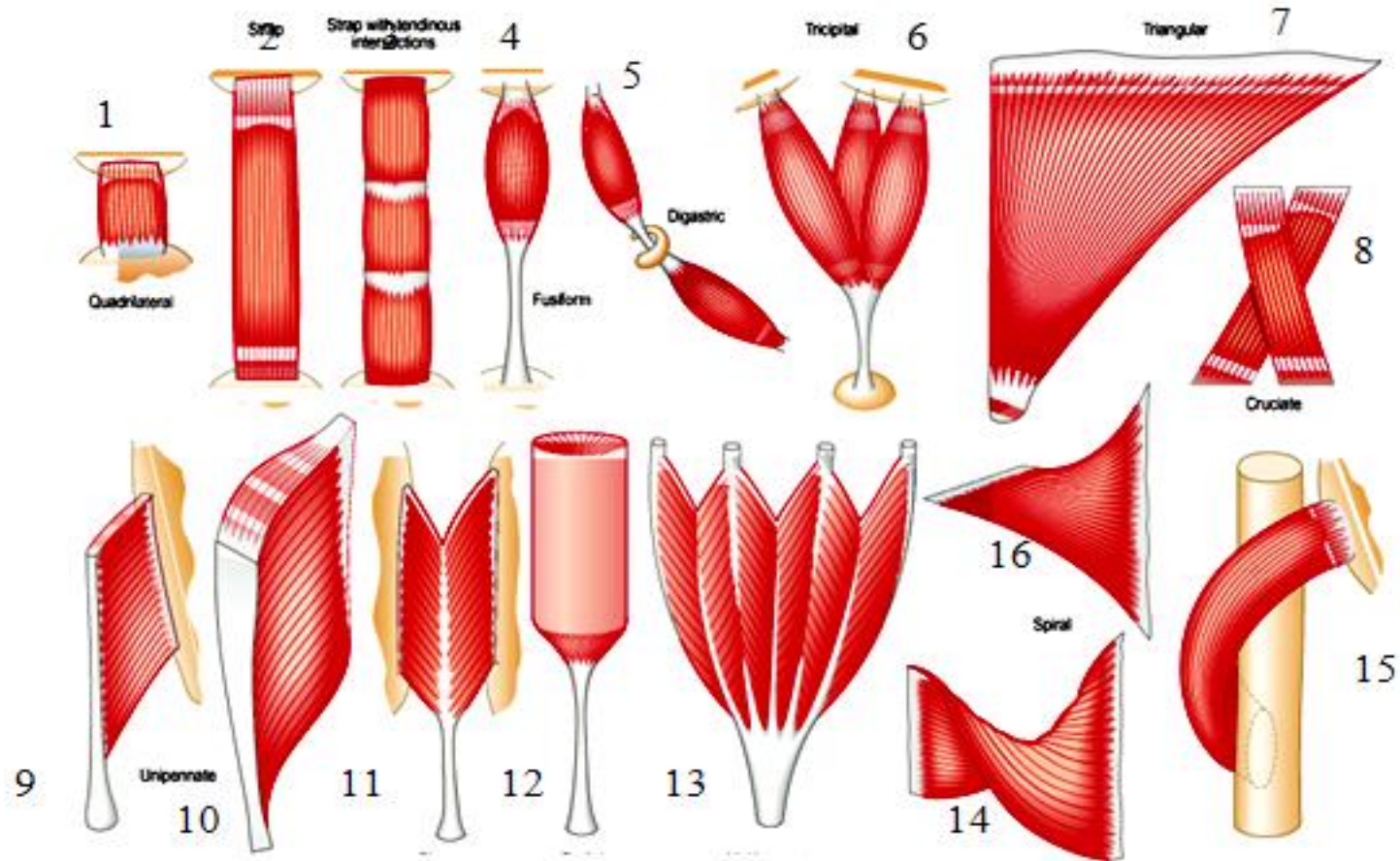




Classification of Muscles

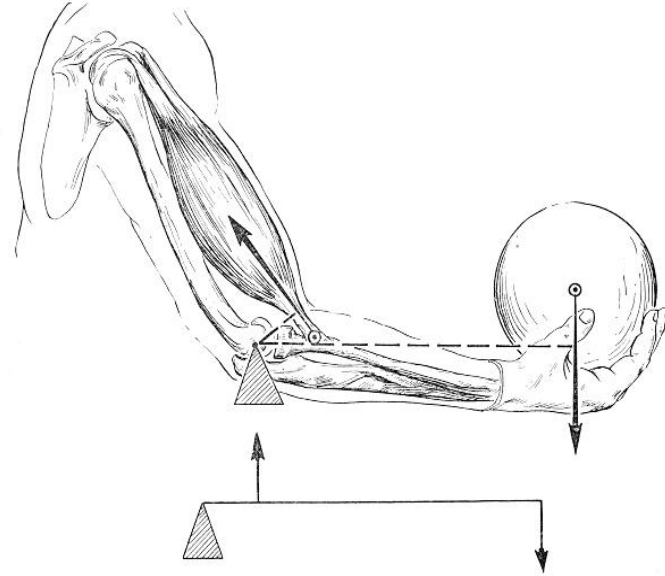
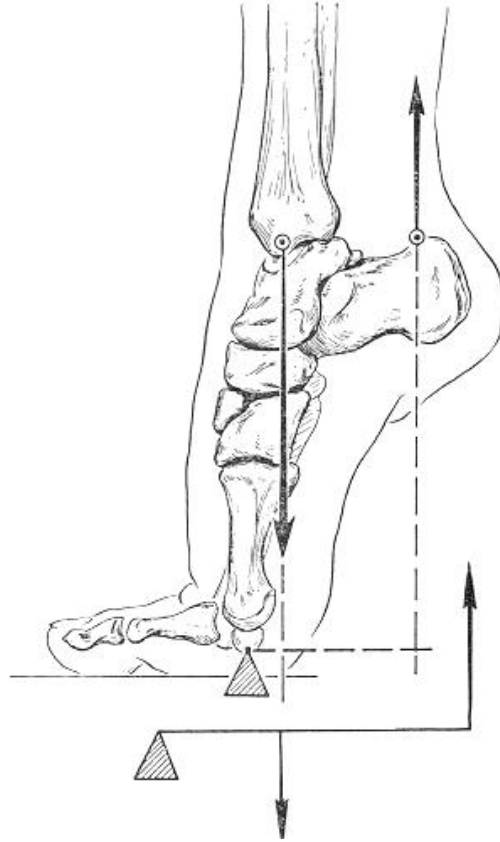
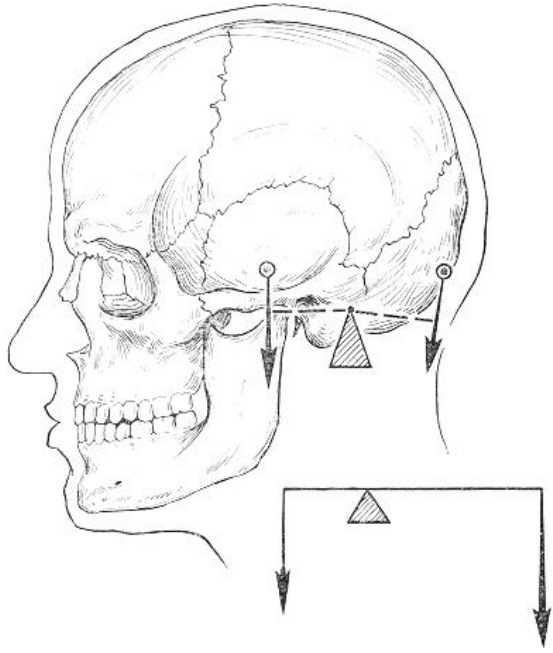
I	II	III	IV	V	VI	VII
According to their development	According to their topography	According to the function	According to their shape	According to the direction of the fibers	According to the relation to the joints	According to histological structure
Autochthonous muscles Truncipetal Muscles Truncifugal muscles	Muscles of the head and neck, Muscles of the trunk, Muscles of the limbs.	Synergetic, Antagonistic, Flexors, Extensors, Pronators, Supinators, Abductors, Adductors, Rotators, Levators, Depressors, Constrictors.	Long, Short, Broad, Rounded, Quadrate, Triangular, Pyramidal, Serrate, Rhomboid, Bicipital, Tricipital, Quadricipital, Biventer.	Fusiform, Straight, Oblique, Transverse, Orbicular, Unipennate, Bipennate, Multipennate, Spiral, Radial, Circular.	Nonarticular, Uniarticular, Biarticular, Multiarticular	Striped, Smooth, Cardiac.

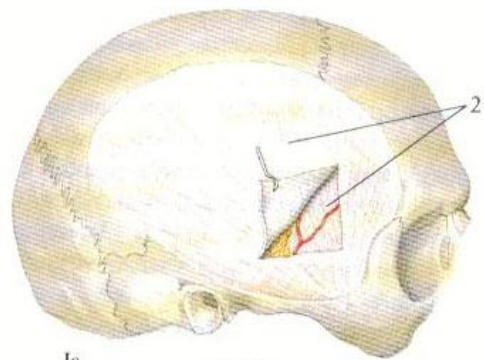
Classification of muscles according to the orientation of the muscular fibres



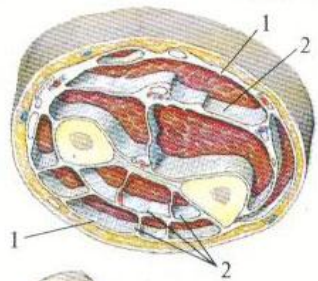
1 – m. quadratus;
2 – m. rectus;
3 – m. rectus (intersectiones tendineae);
4 – m. fusiformis;
5 – m. biventer;
6 – m. triceps;

7 – m. triangularis;
8 – m. cruciformis;
9, 10 – m. unipennatus;
11 – m. bipennatus;
12 – m. radialis;
13 – m. multipennatus;
14, 15, 16 – m. spiralis.

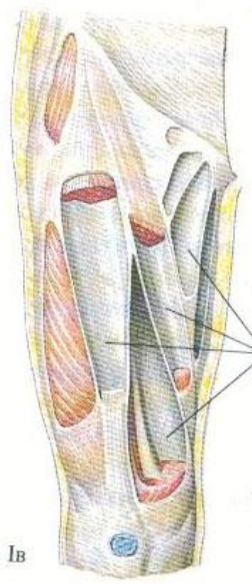




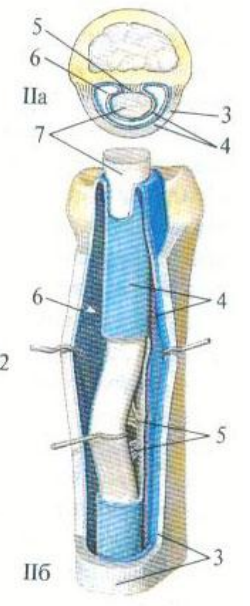
Ia



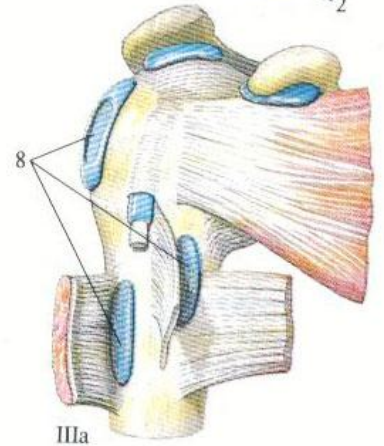
I6



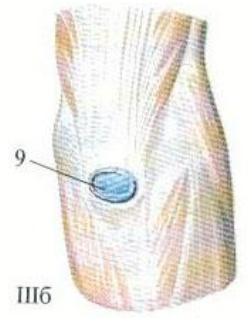
Ib



II6



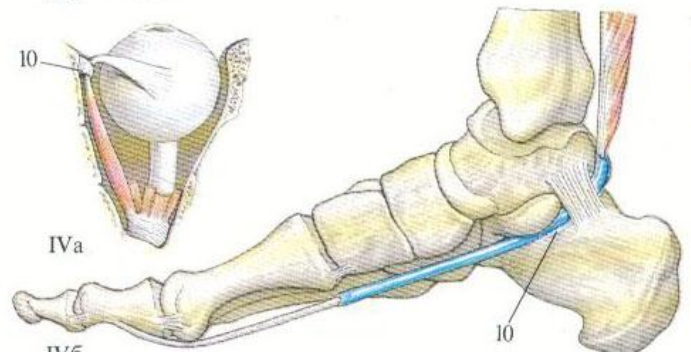
IIIa



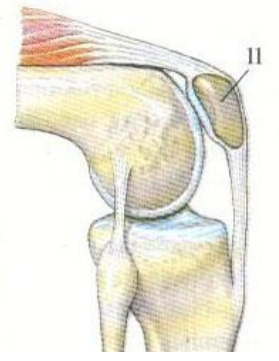
III6



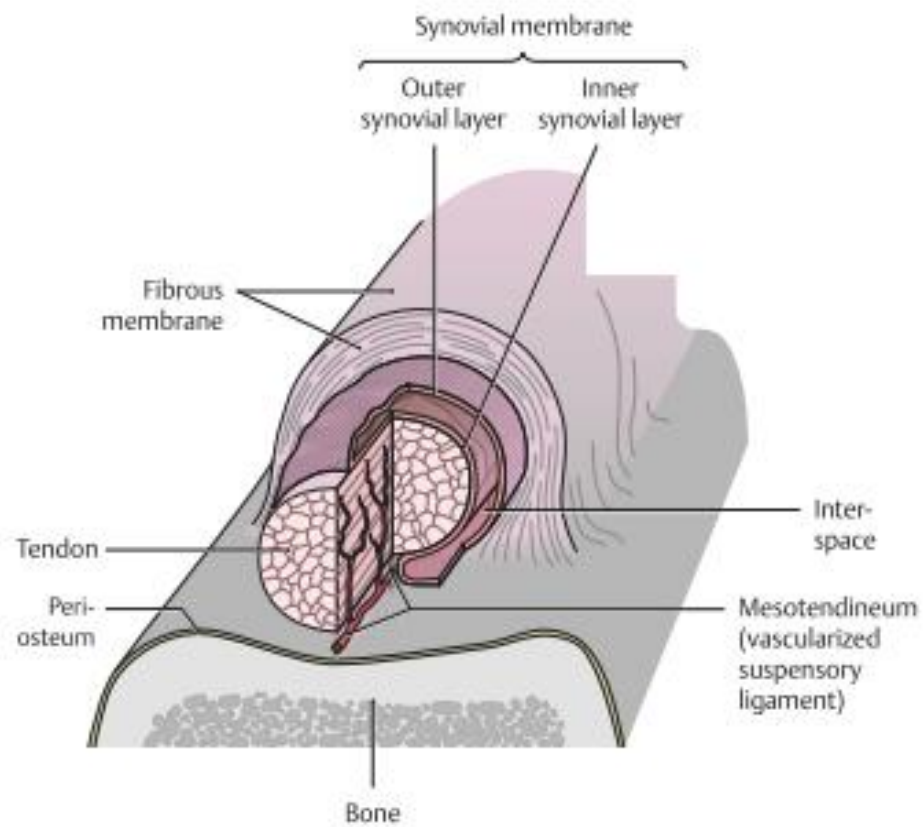
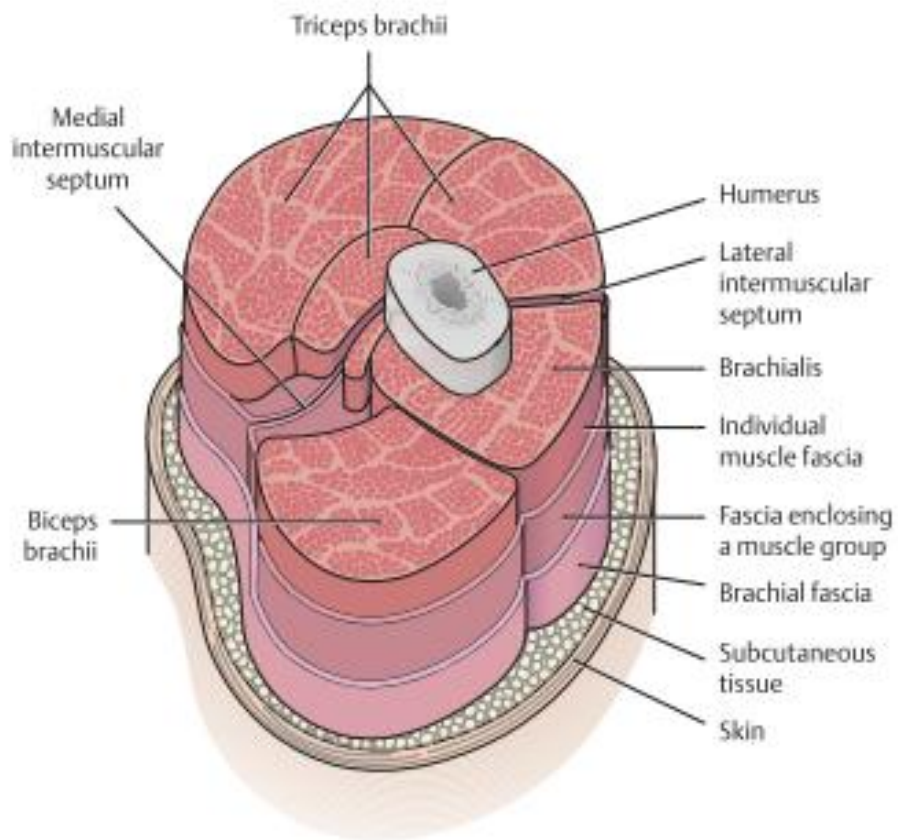
IIIb



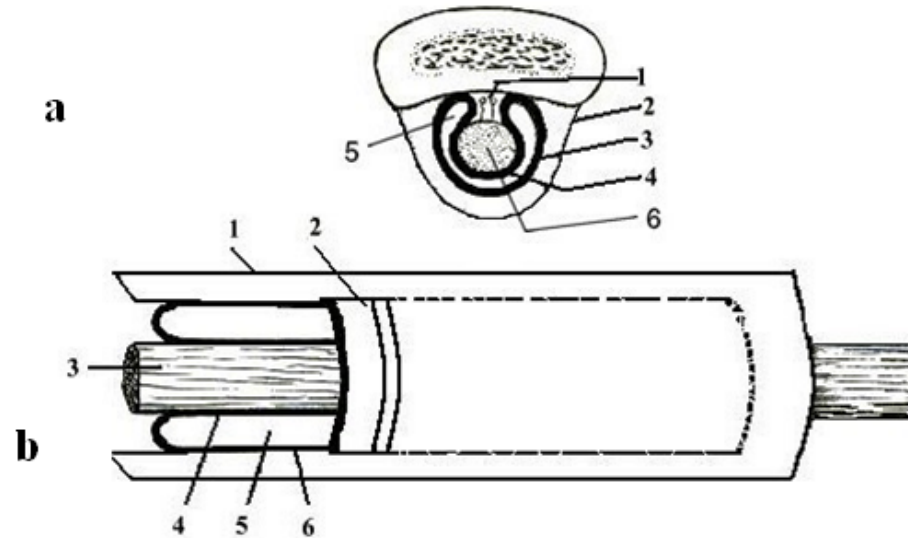
IVa



II



Structure of the synovial sheaths

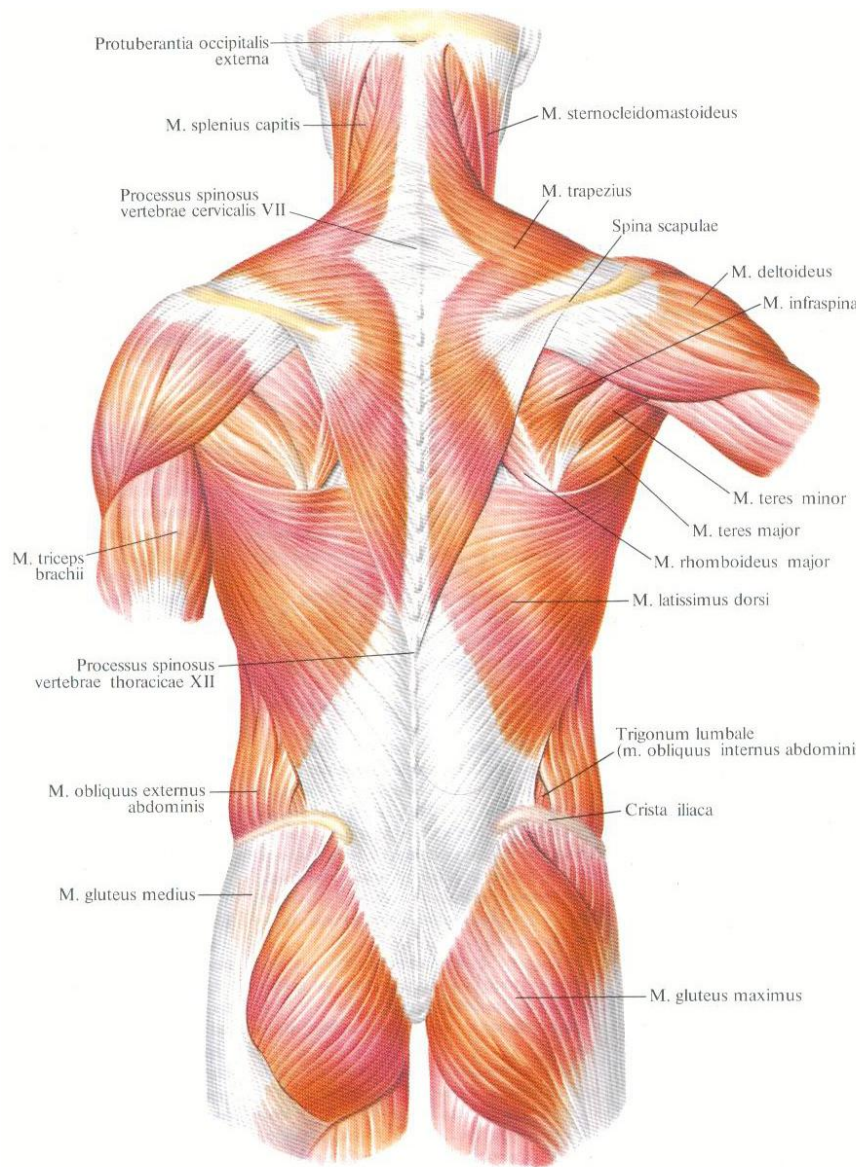


a. Sectio transversalis

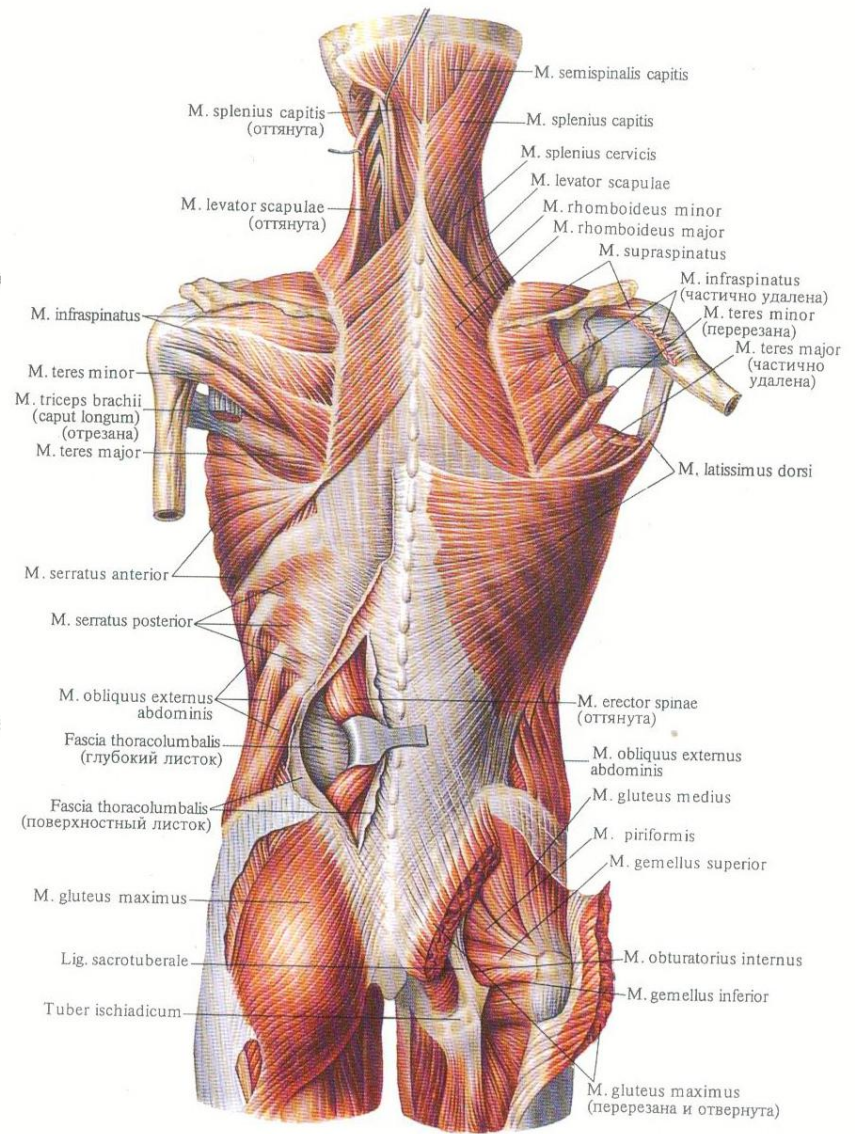
- 1 - mesotendineum;*
- 2 - vagina osteofibrosis;*
- 3 - lamina parietalis vaginae synovialis tendinis;*
- 4 - lamina visceralis vaginae synovialis tendinis;*
- 5 - cavitas vaginae synovialis;*
- 6 - tendo.*

b. Sectio longitudinalis

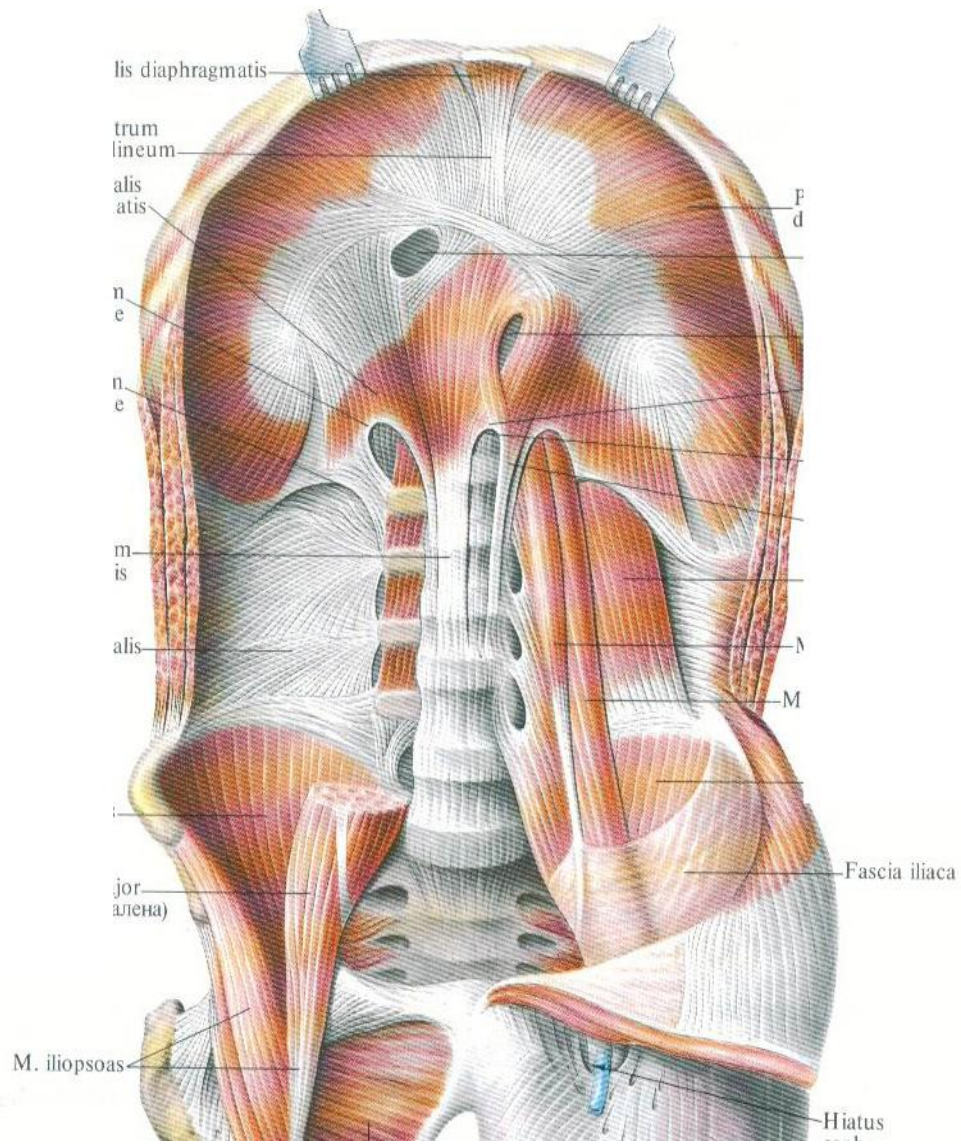
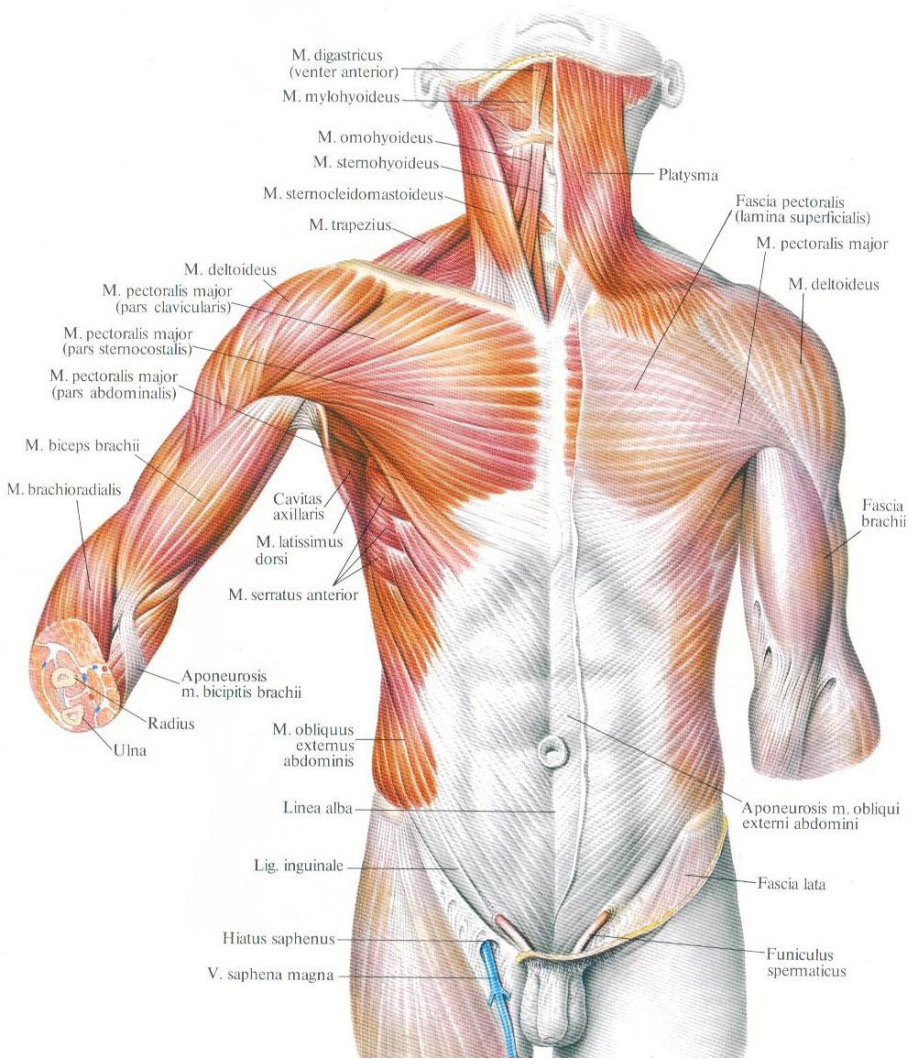
- 1 - vagina fibrosa tendinis;*
- 2 - vagina synovialis tendinis;*
- 3 - tendo;*
- 4 - lamina visceralis vaginae synovialis tendinis;*
- 5 - cavitas vaginae synovialis;*
- 6 - lamina parietalis vaginae synovialis tendinis.*

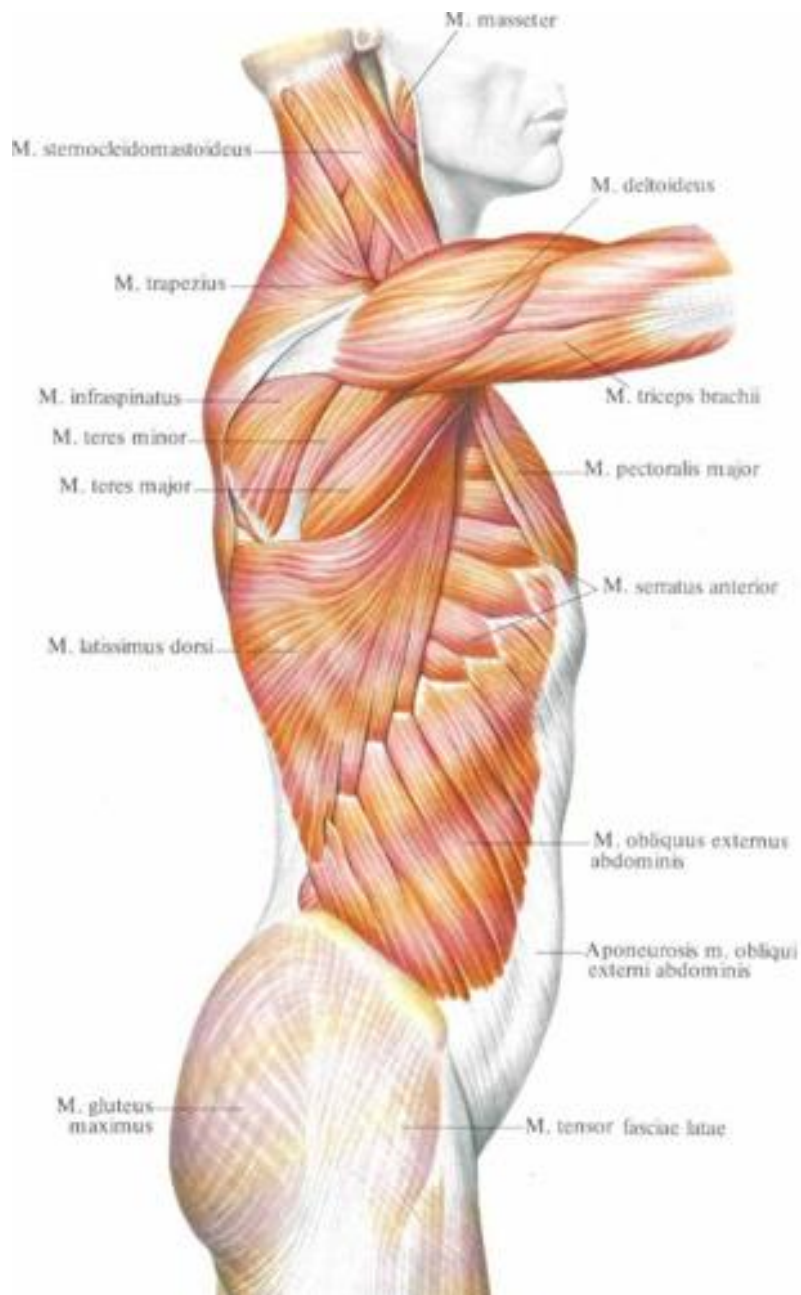


293. Мышцы спины, mm. dorsi.
(Поверхностные мышцы.)



294. Мышцы спины и задней области шеи.





○

