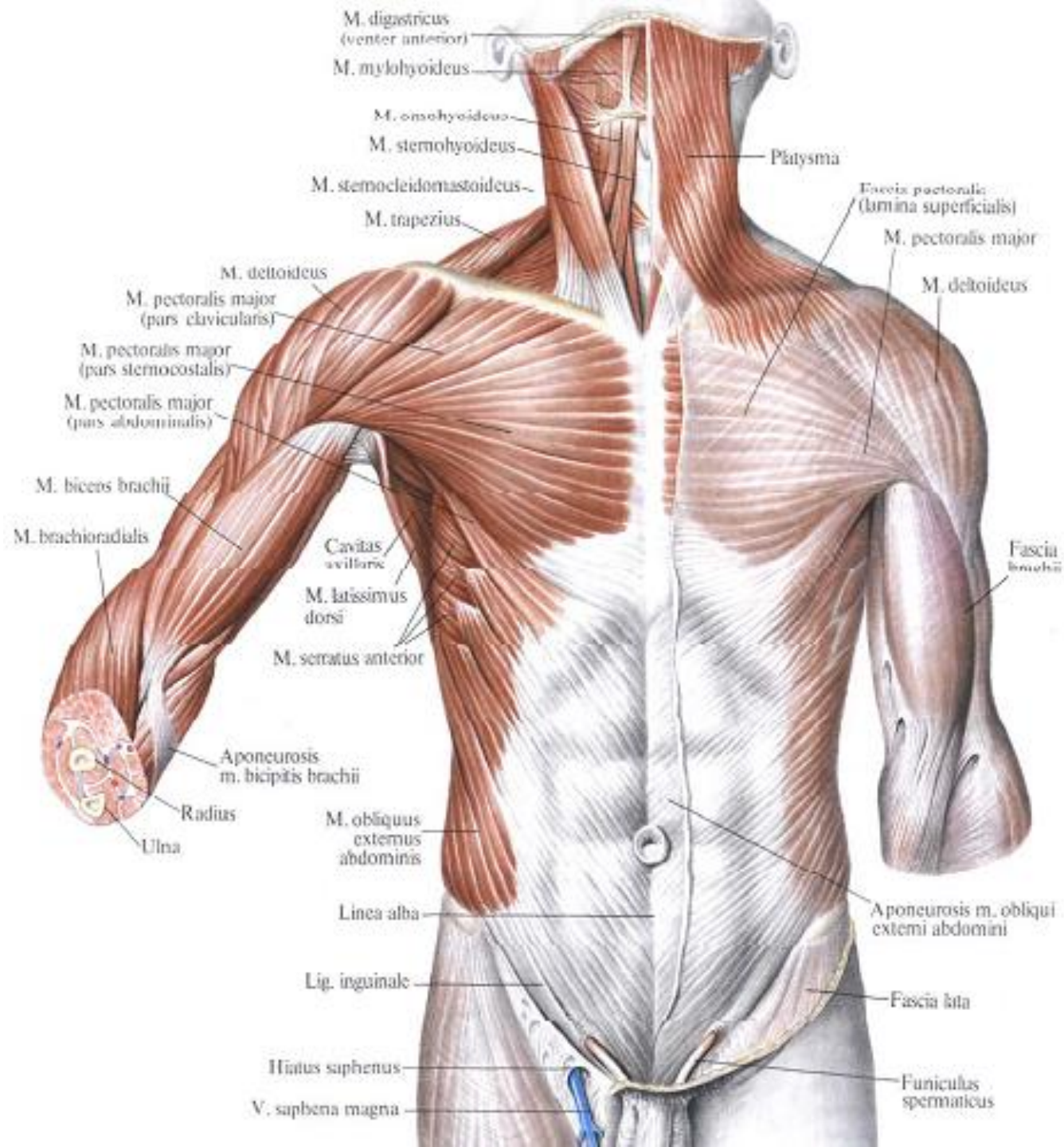


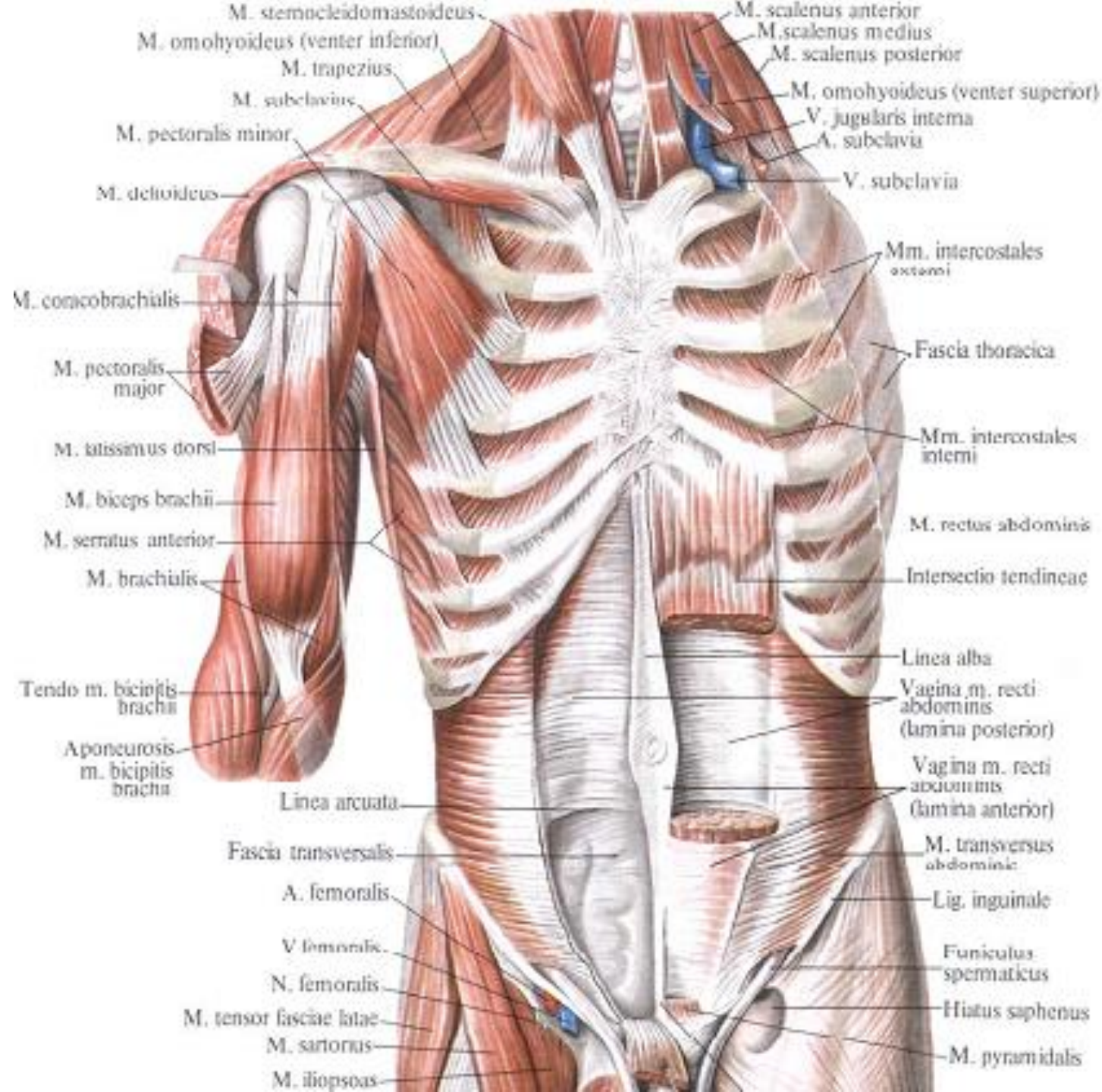
STATE MEDICAL AND PHARMACEUTICAL
UNIVERSITY “NICOLAE TESTEMITANU”
ANATOMY DEPARTMENT

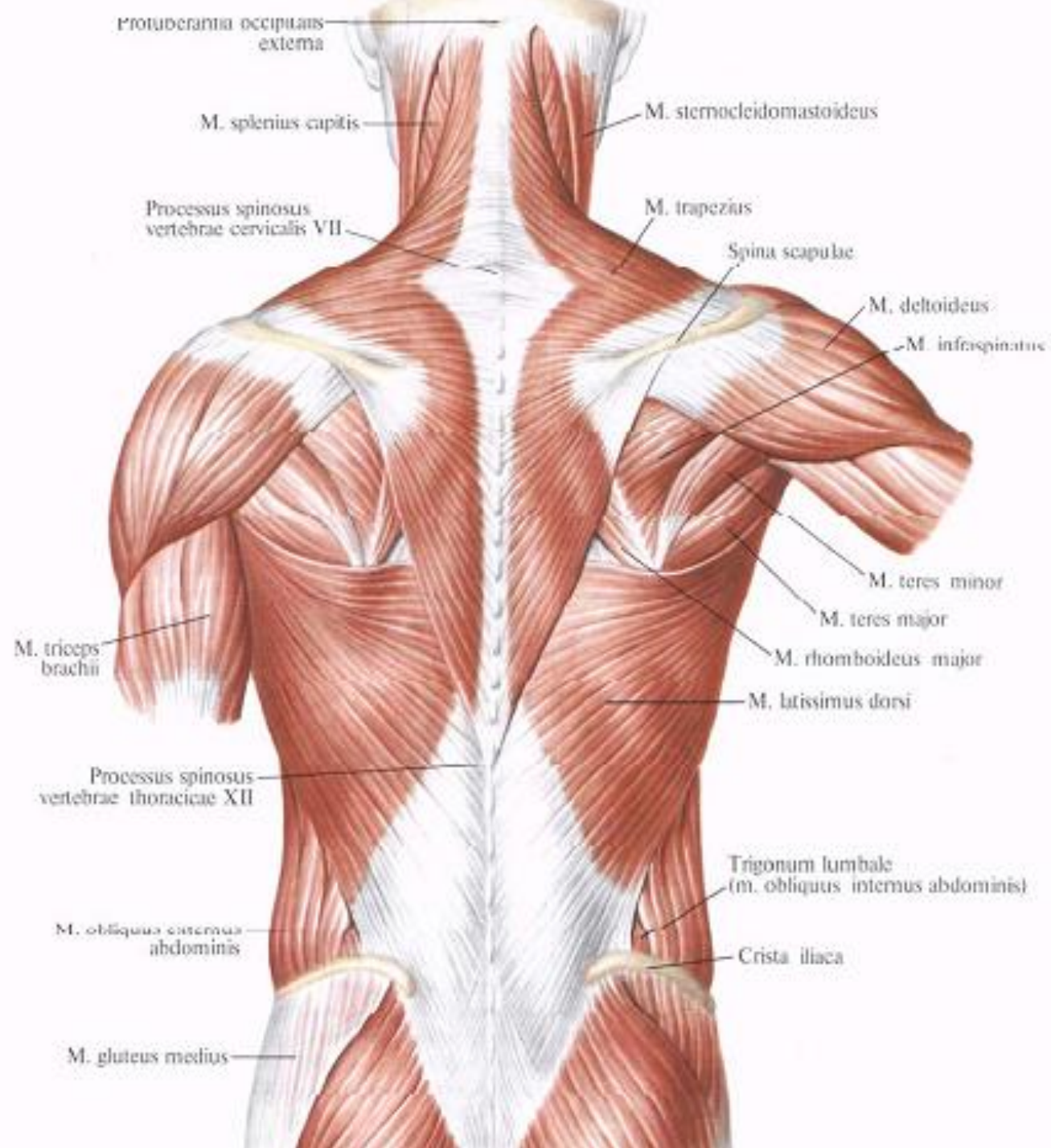
Functional Anatomy of Muscles of the Upper Limbs

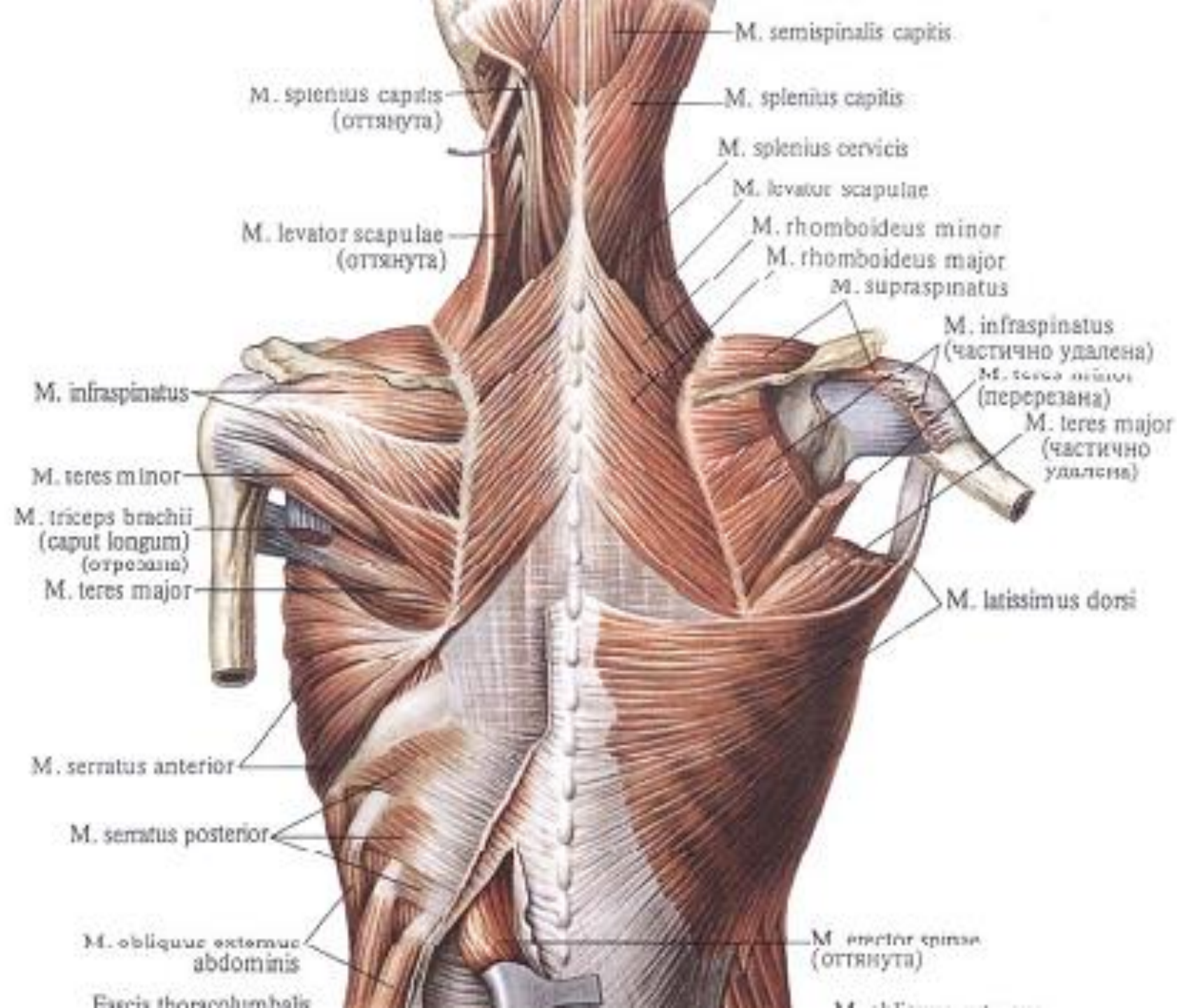
Lecturer **Globa Lilian**

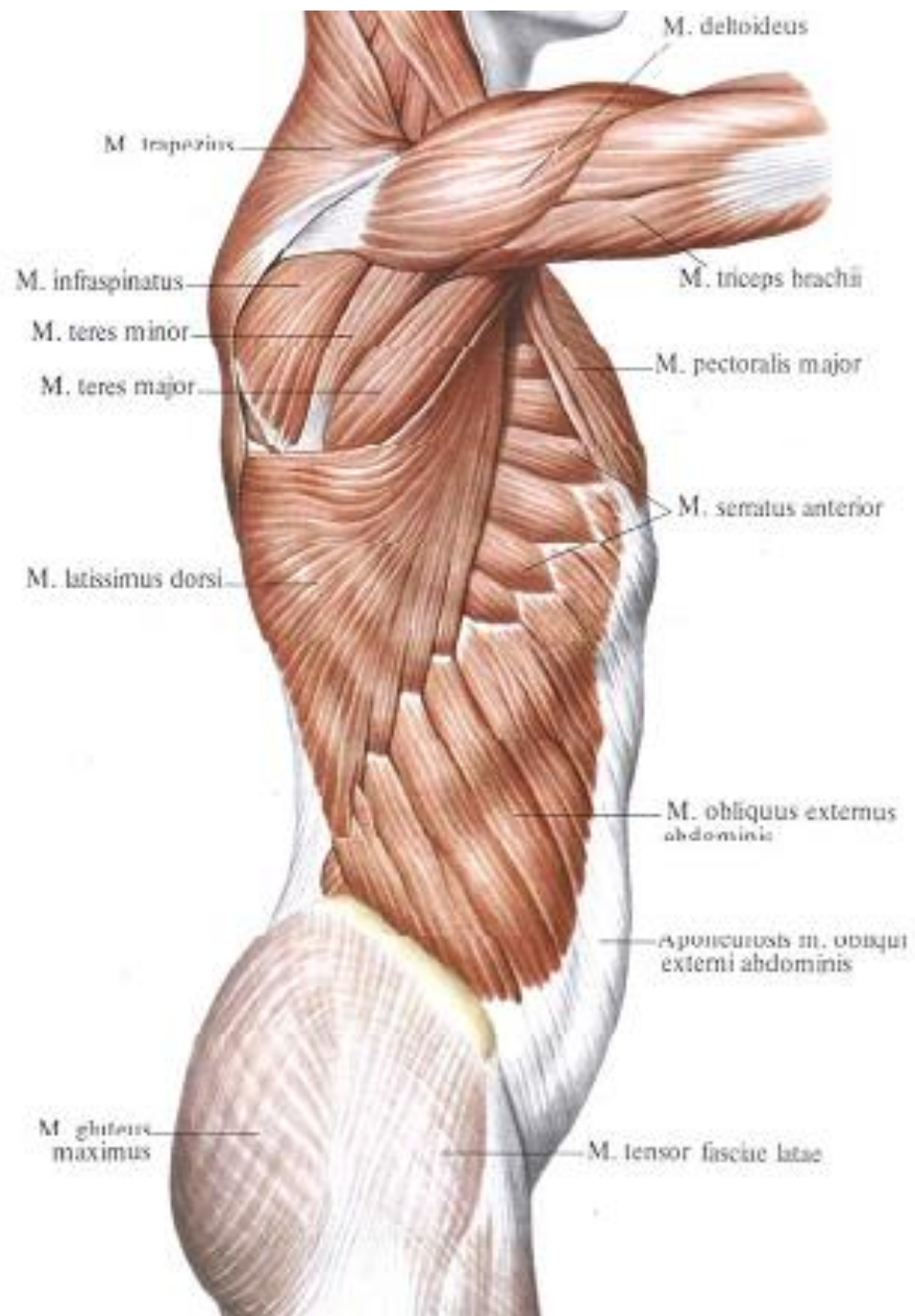


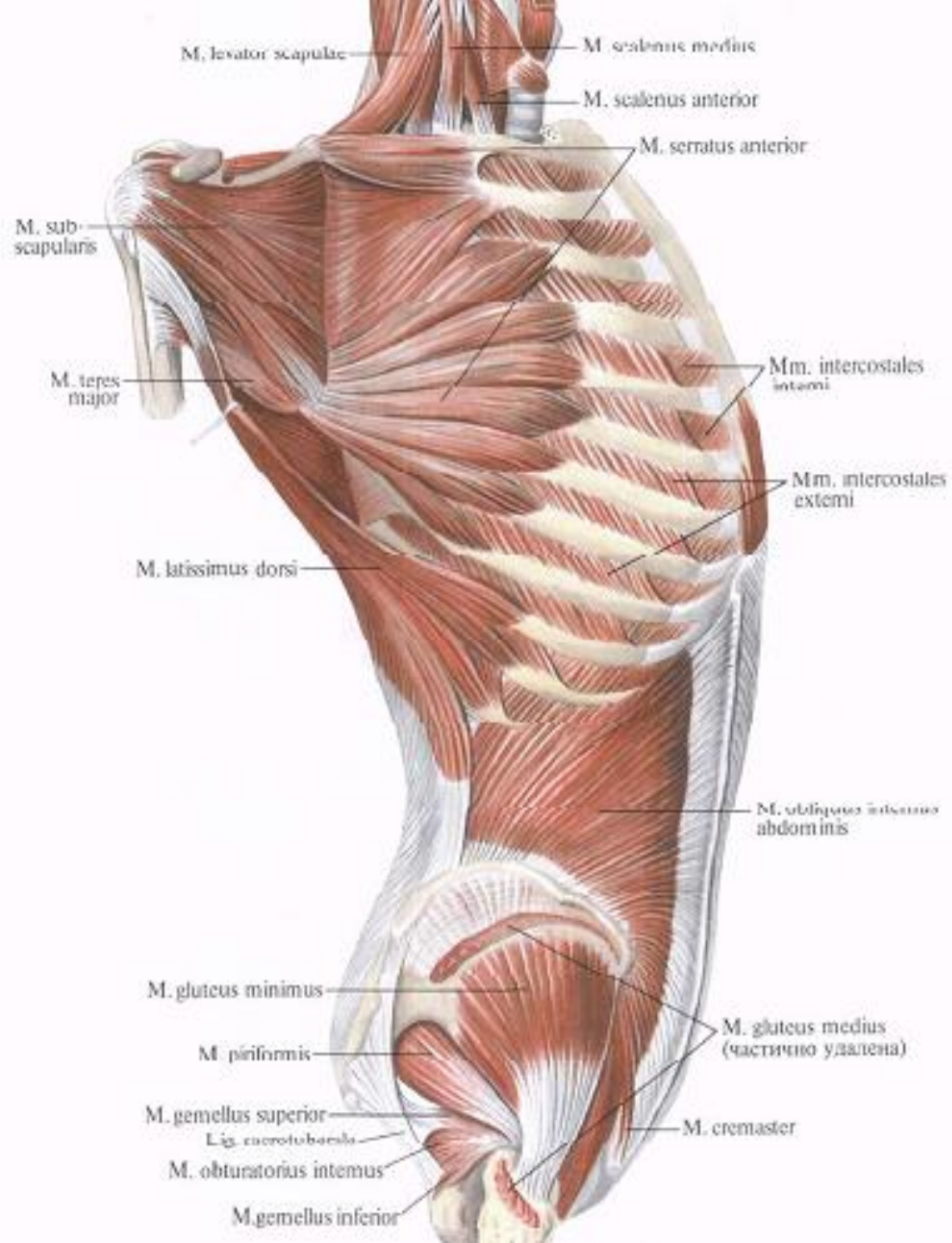


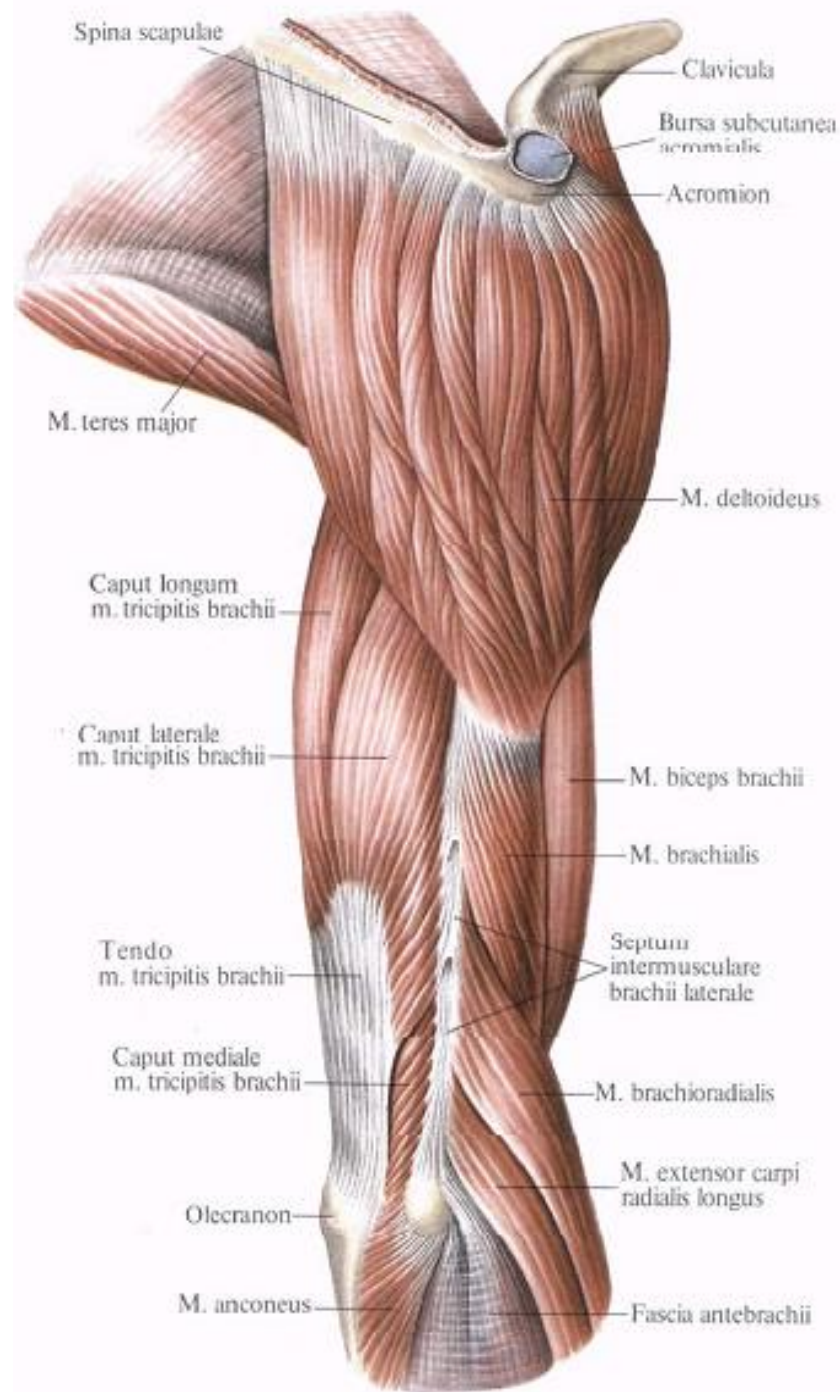
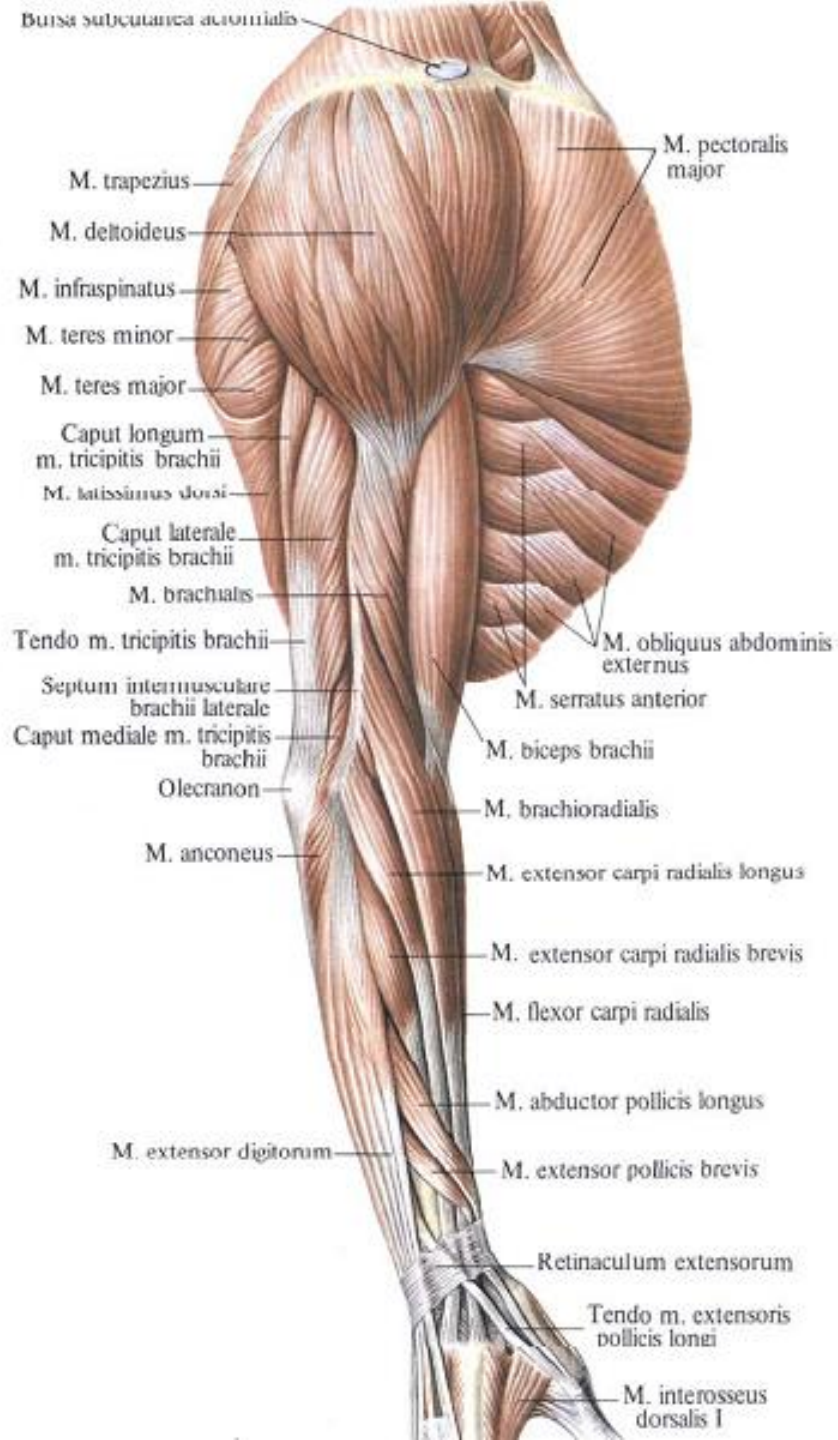


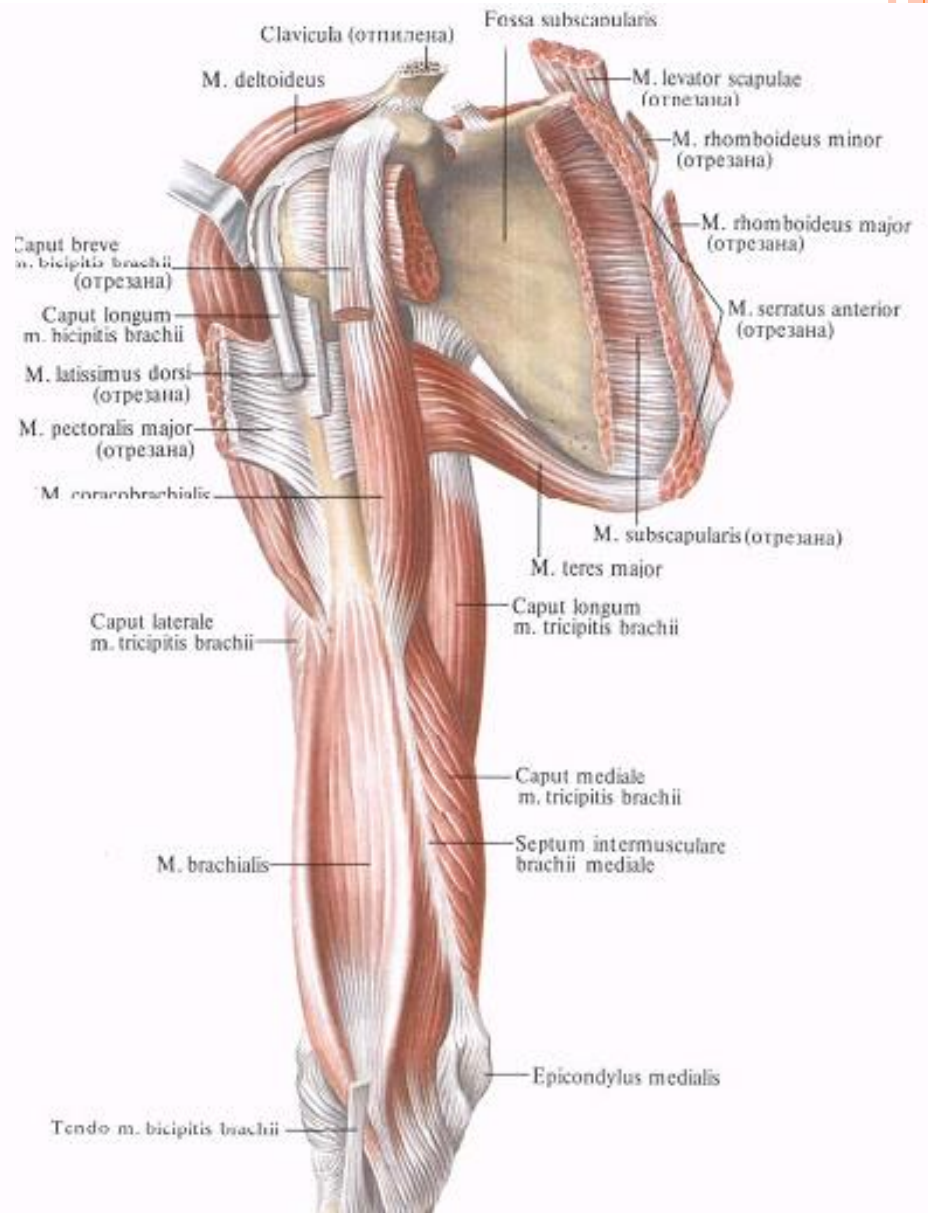
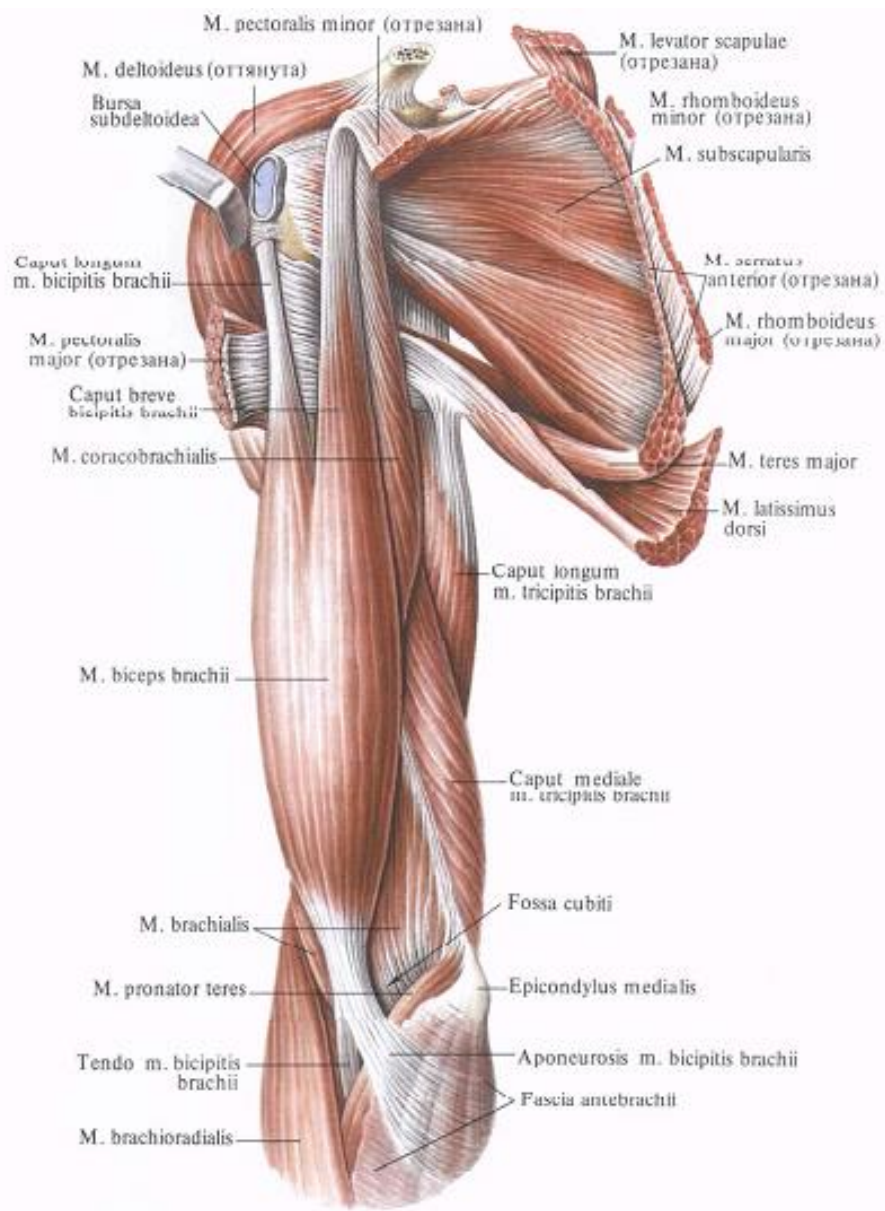


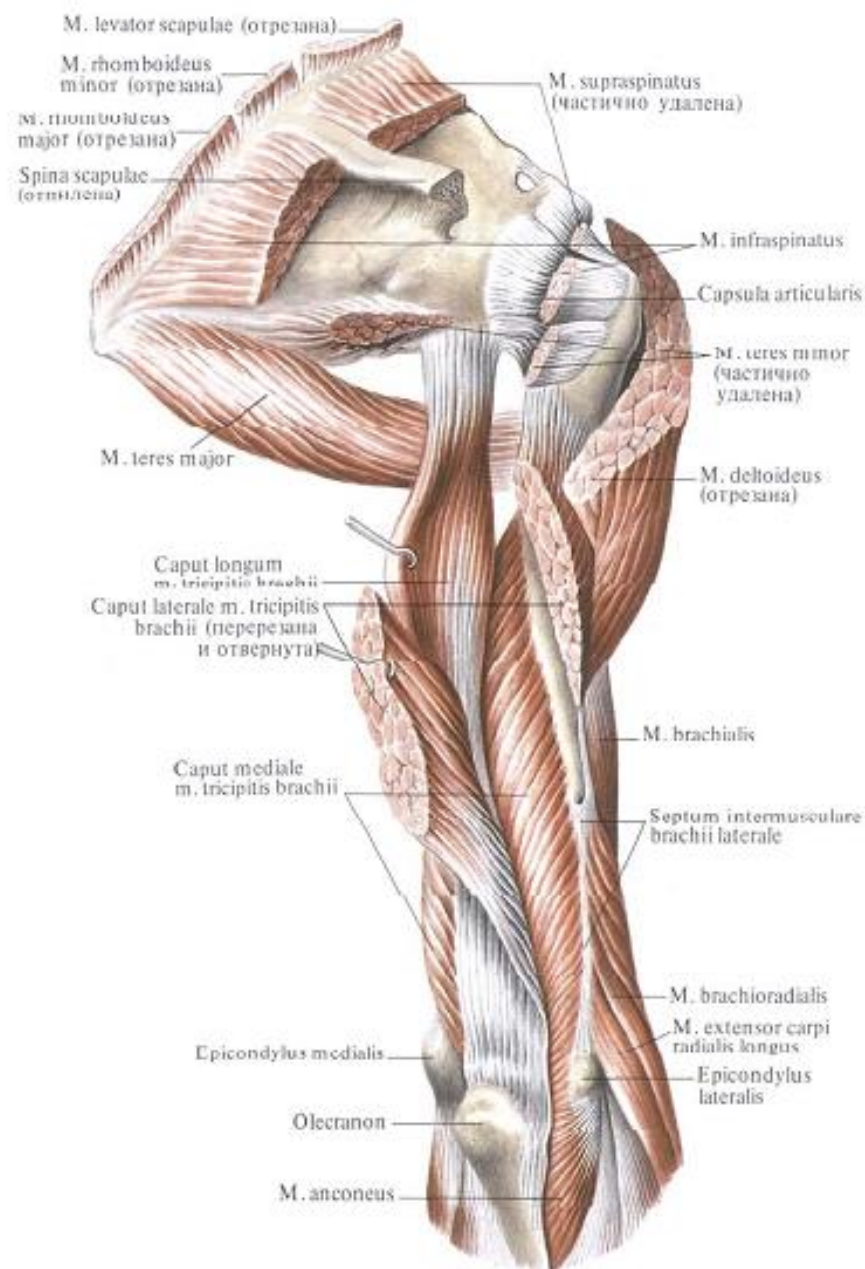
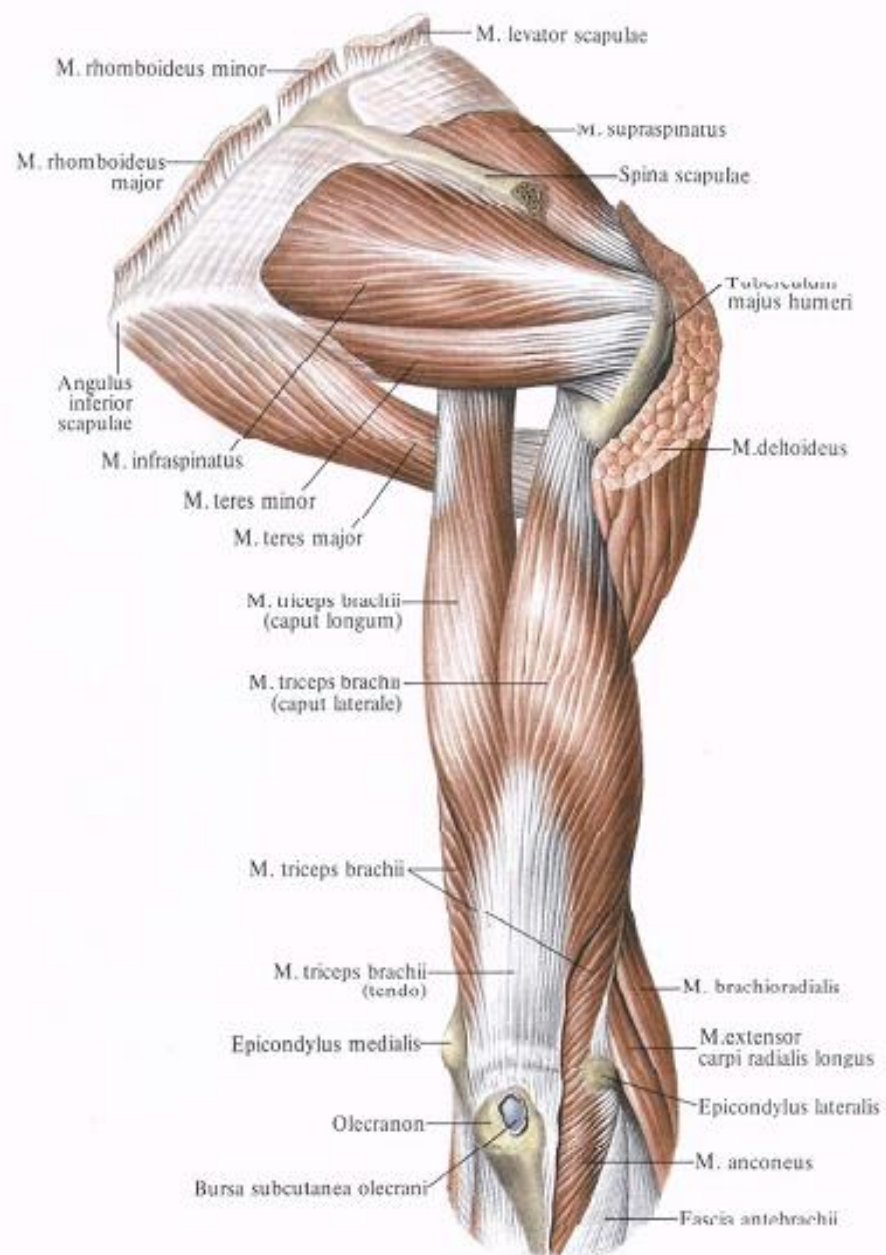


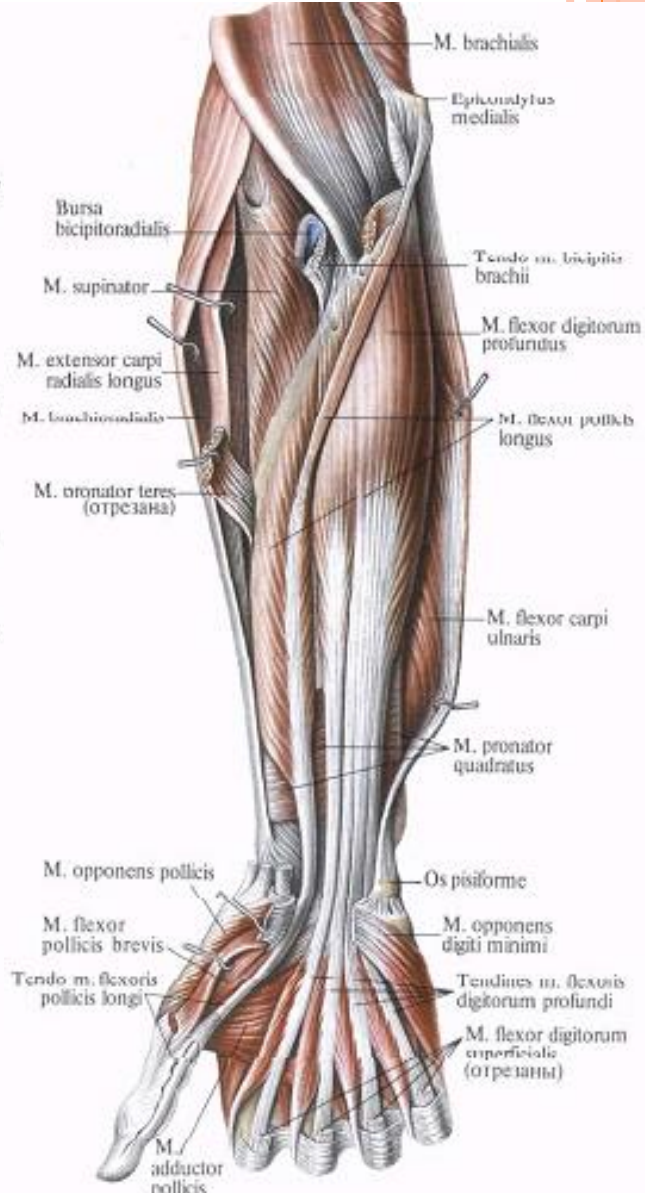
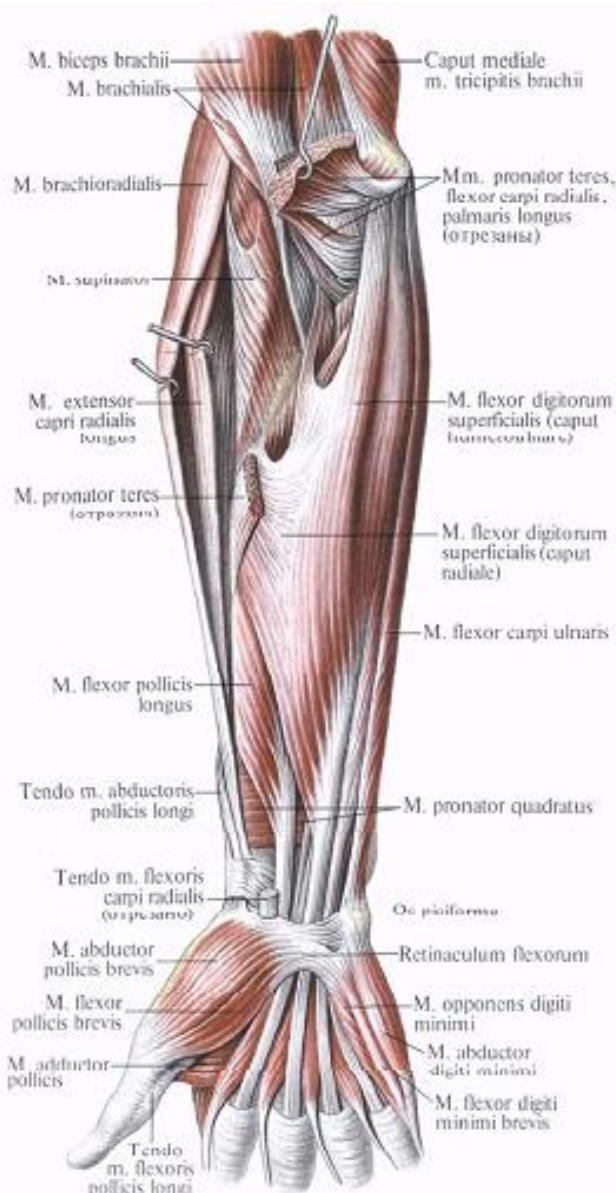


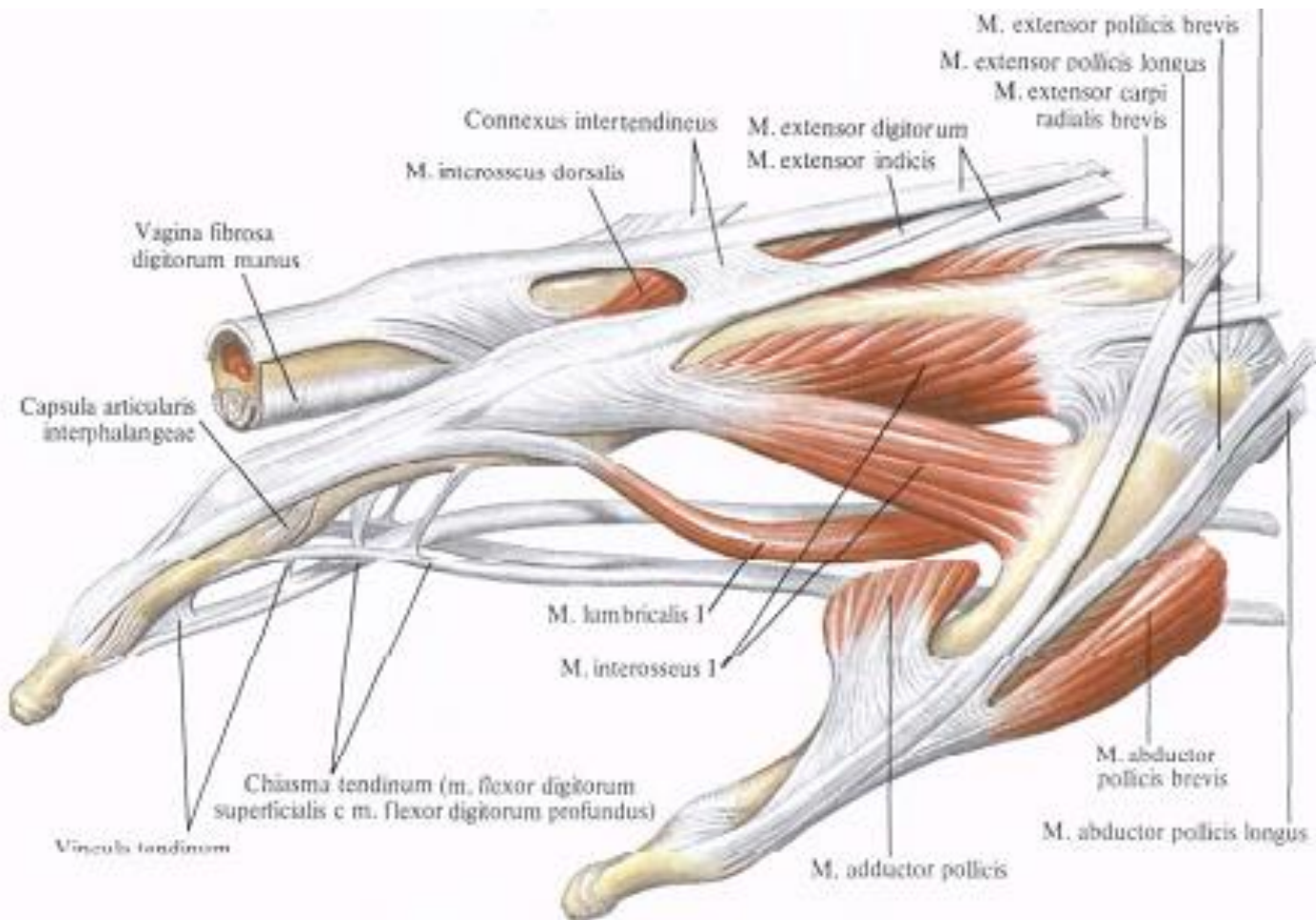




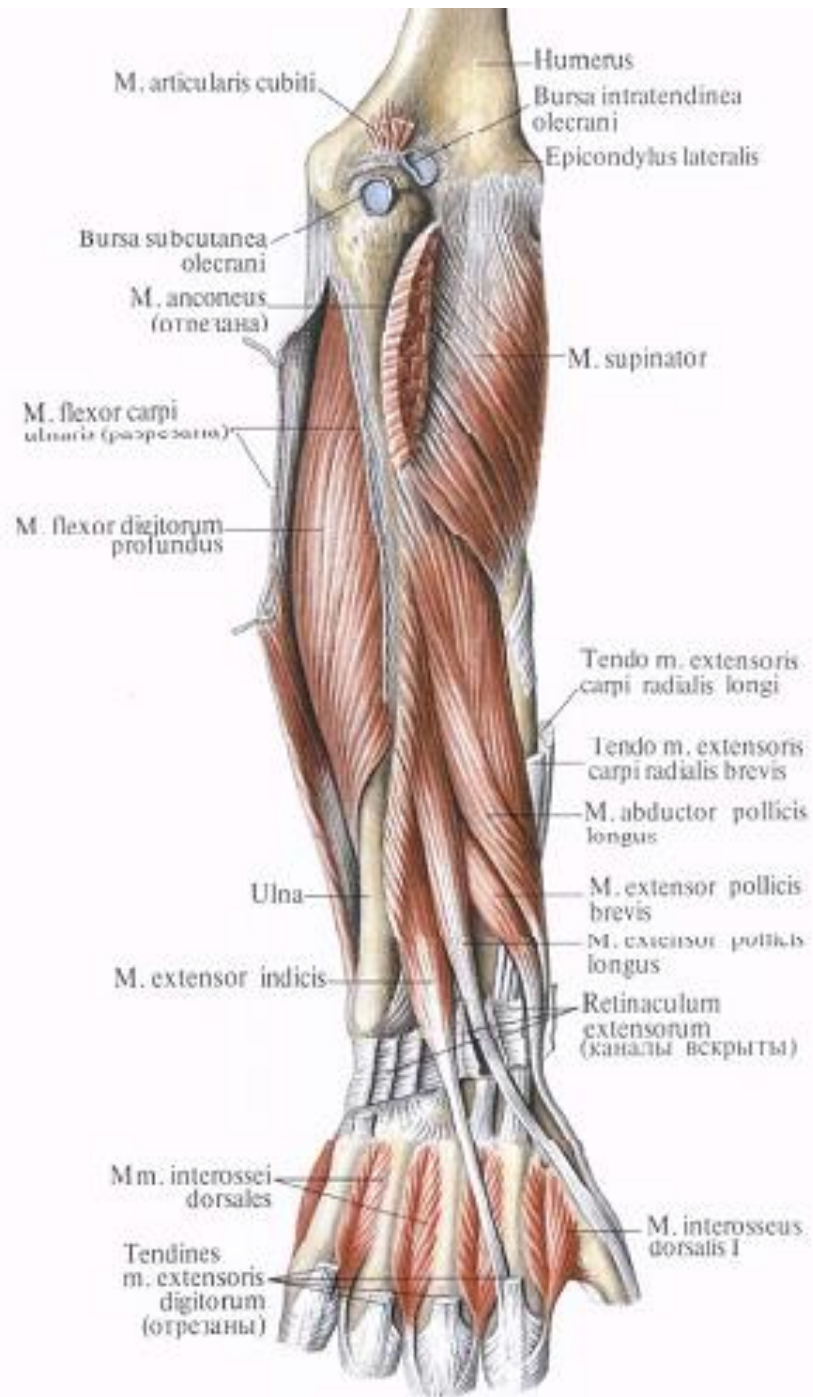
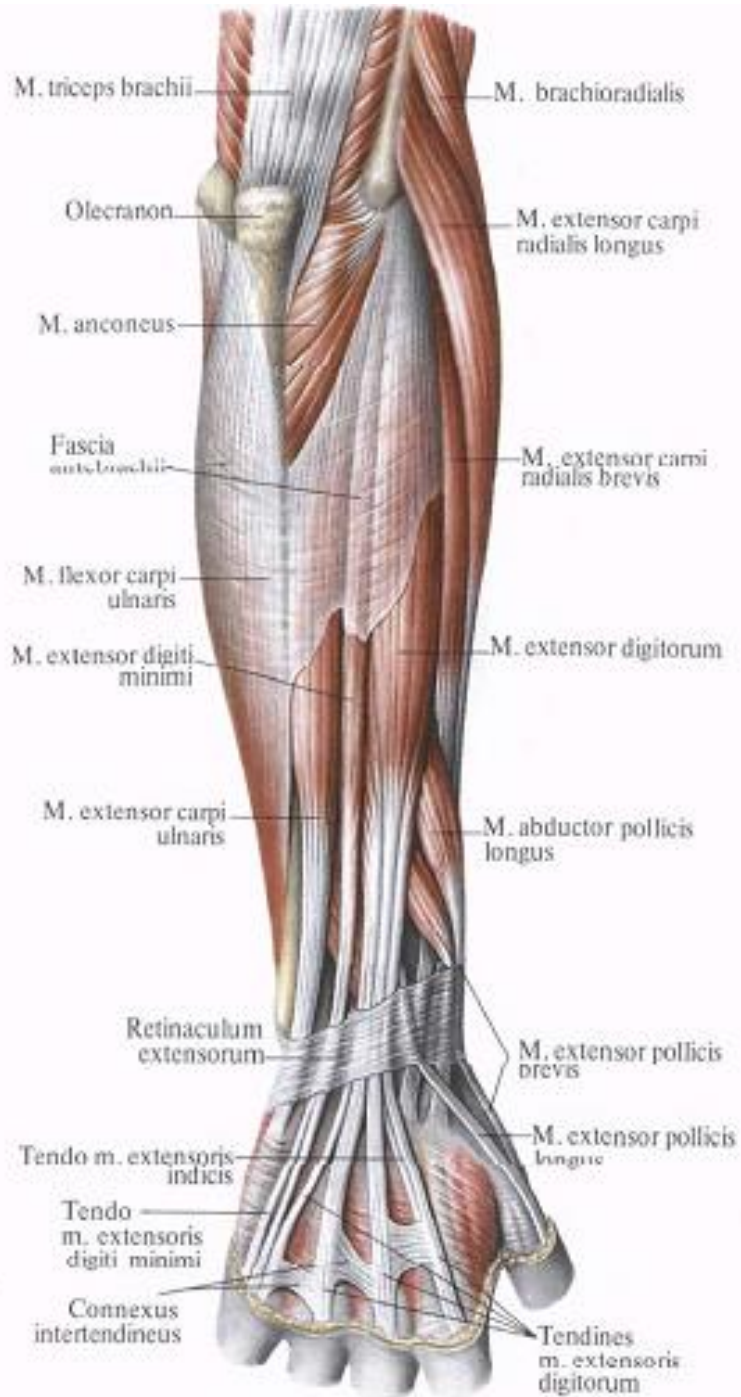


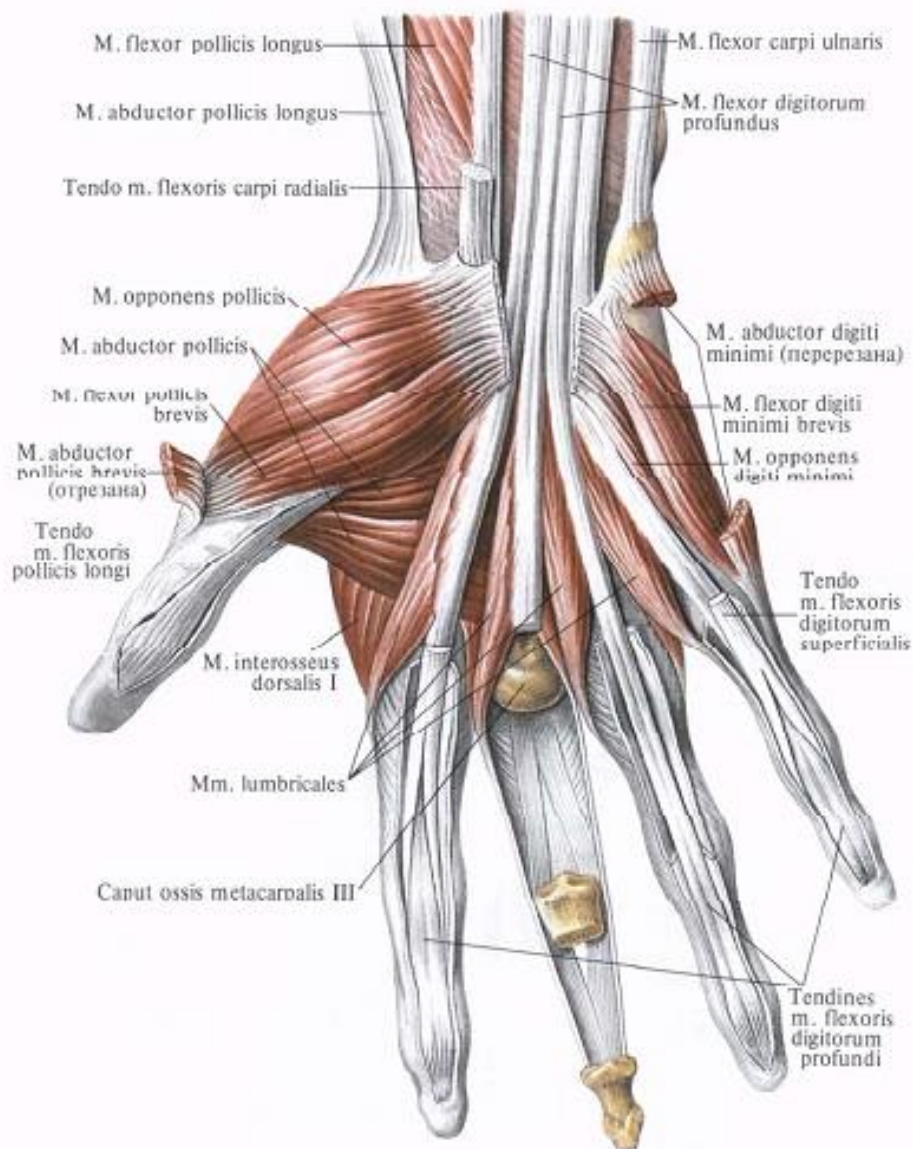
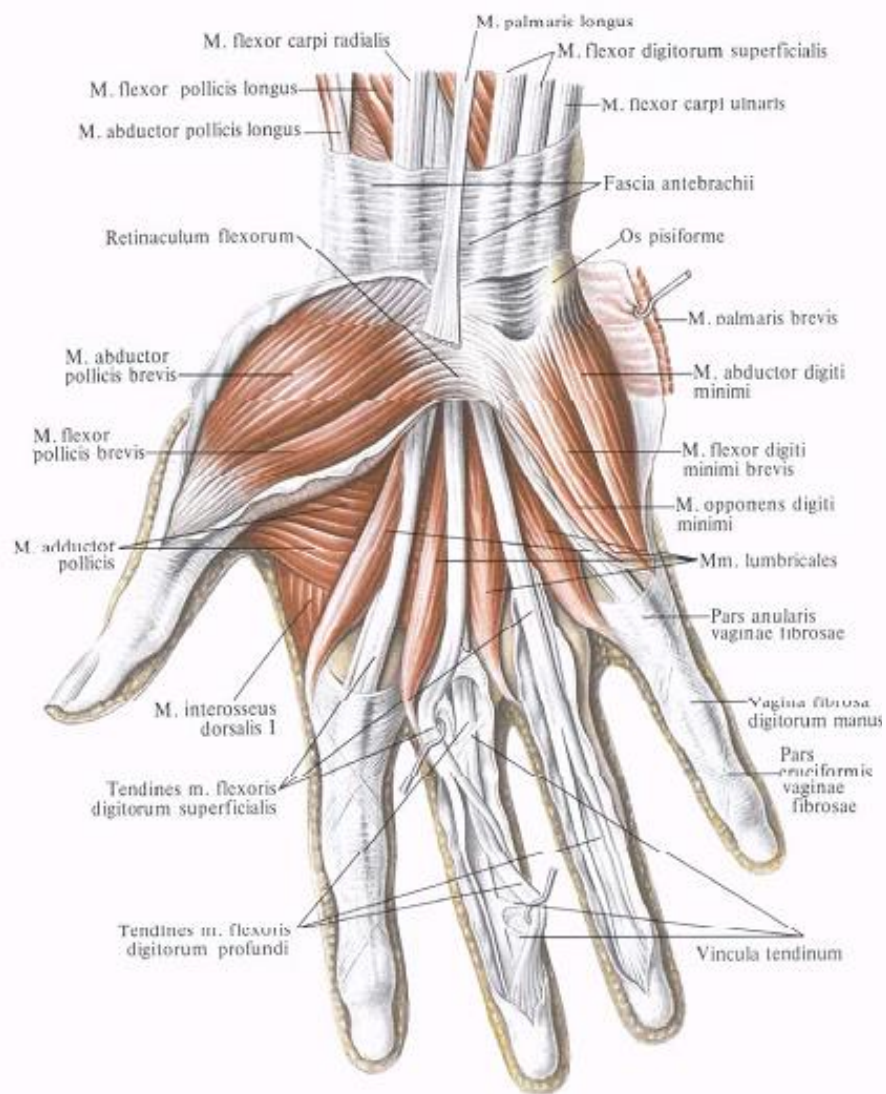


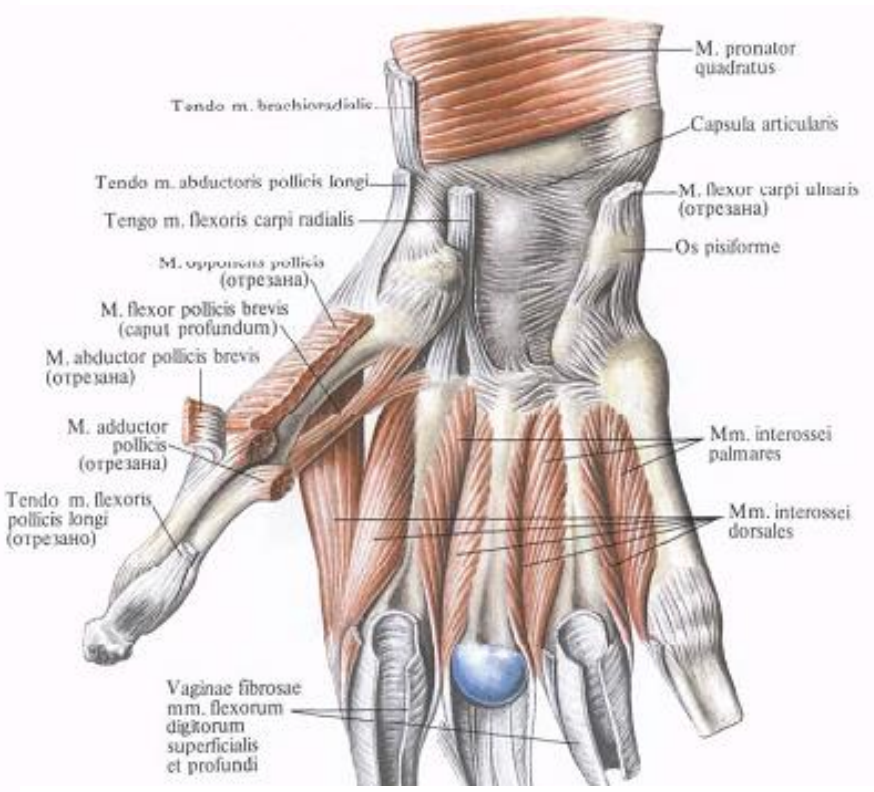
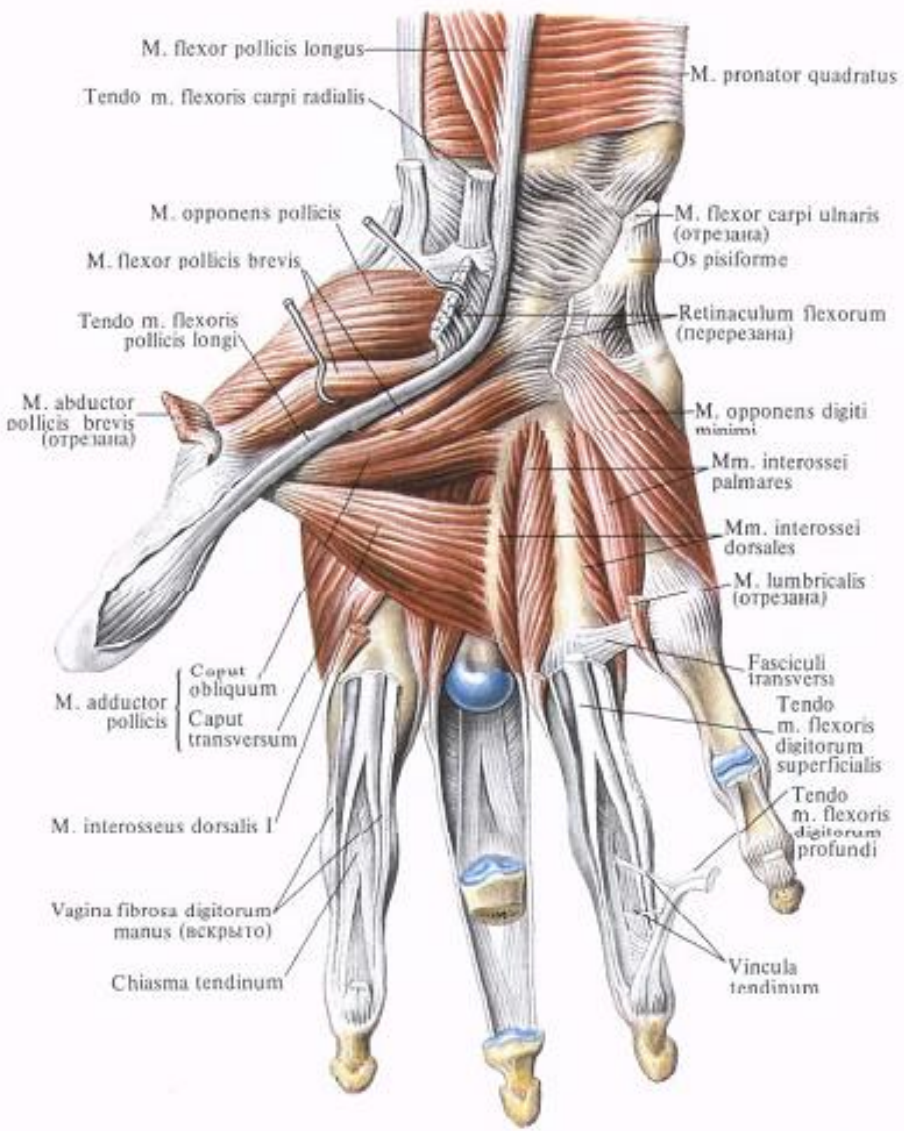


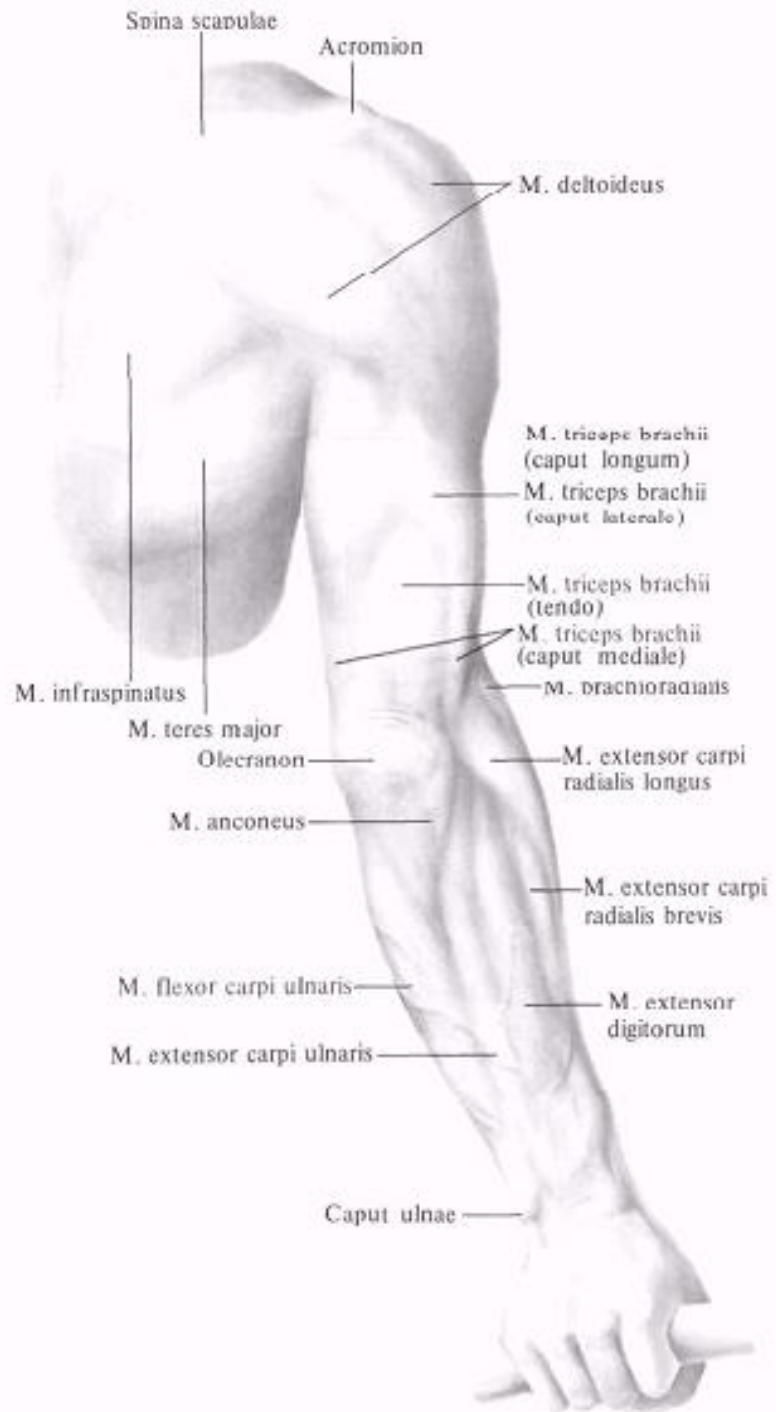
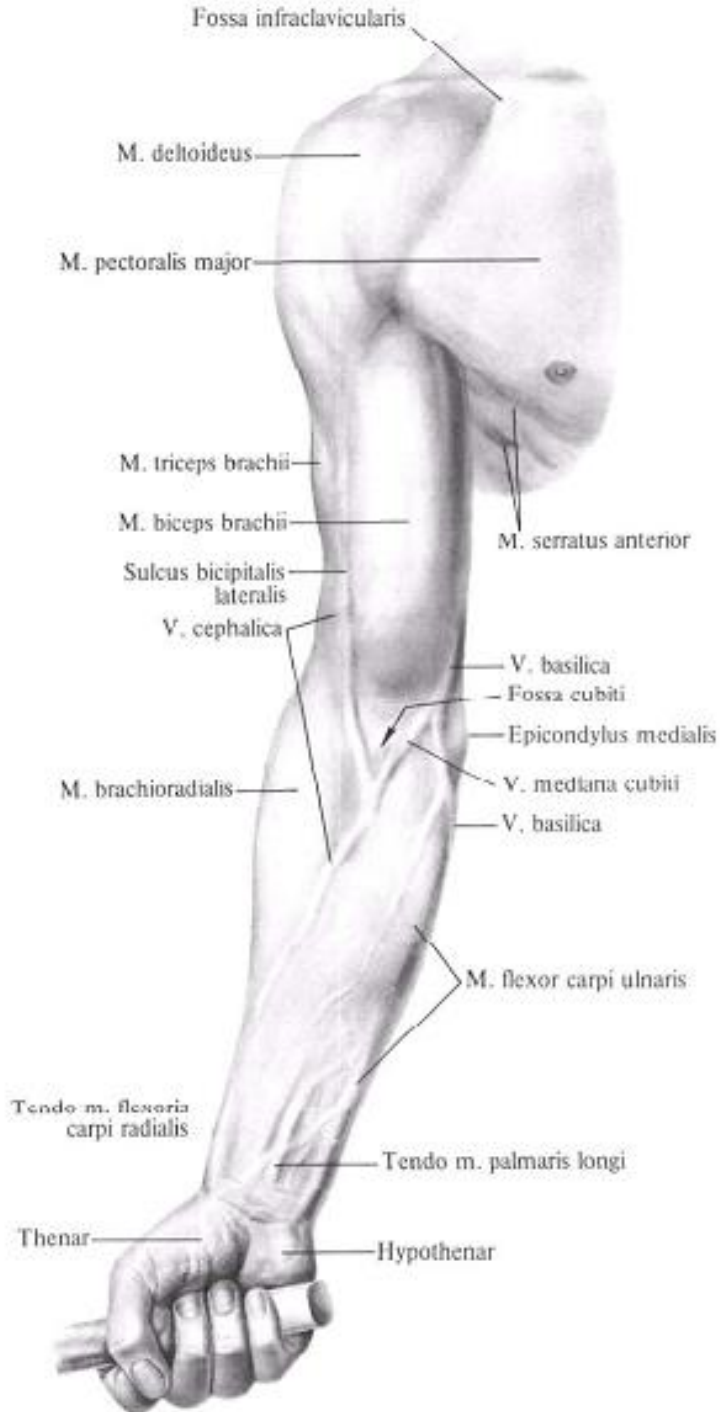


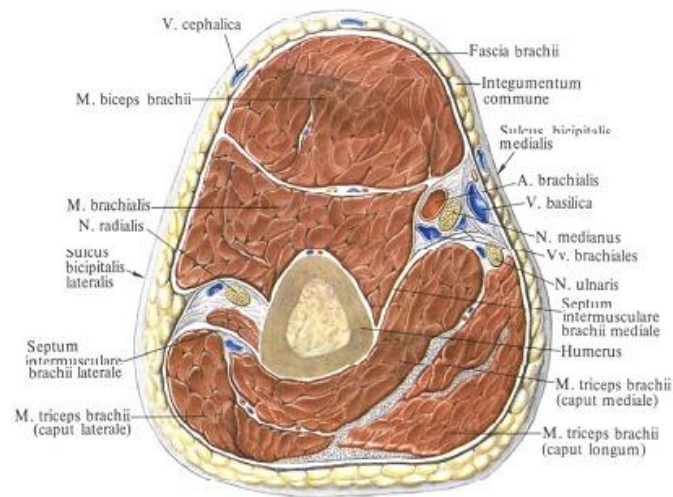
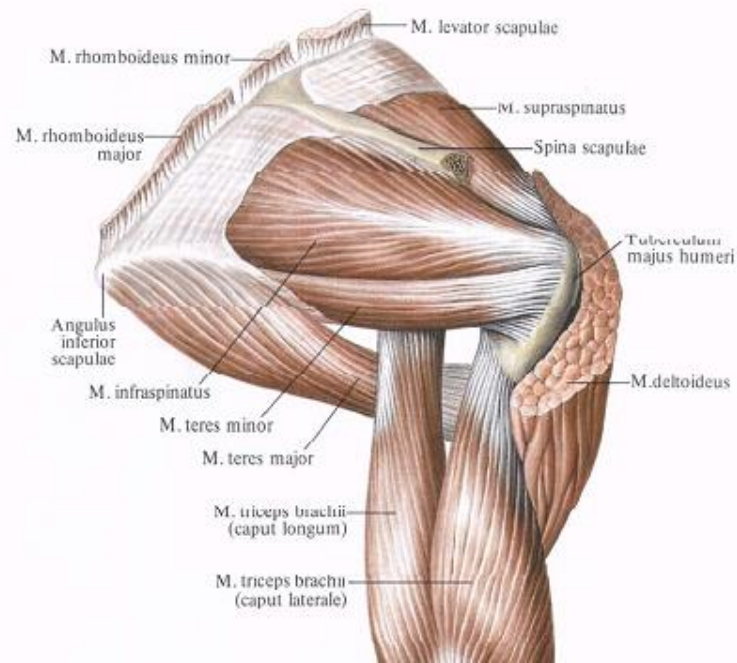
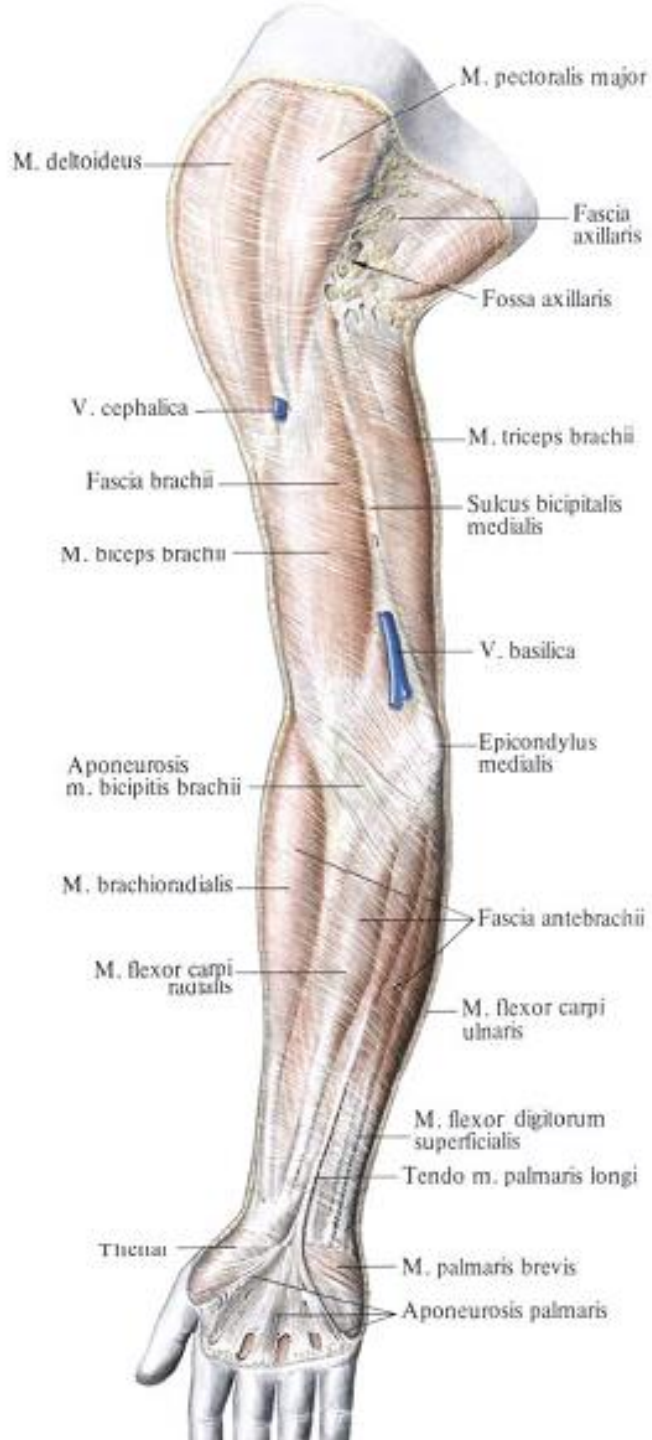


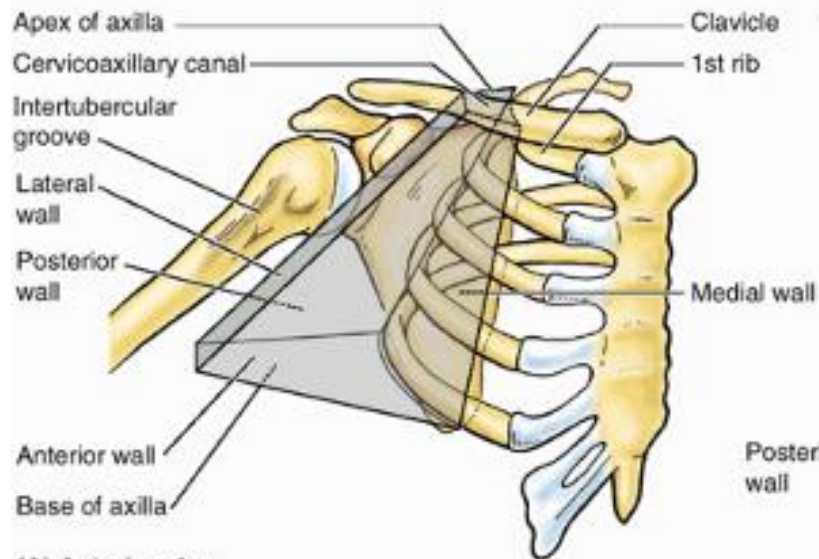




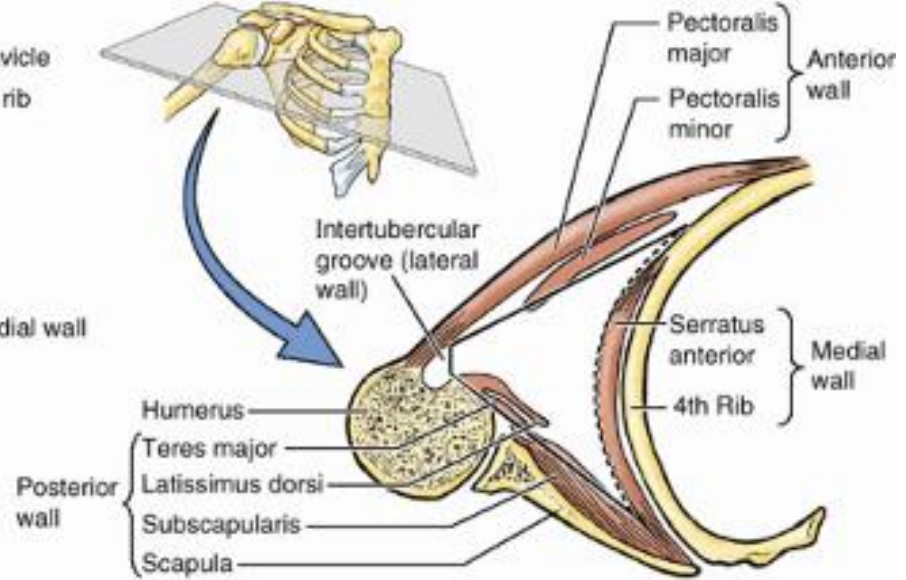




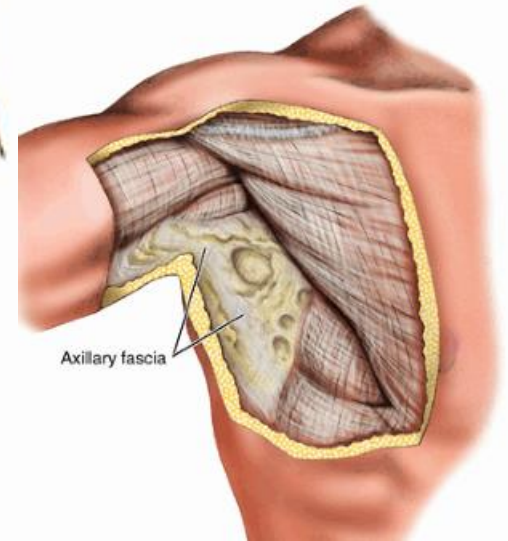
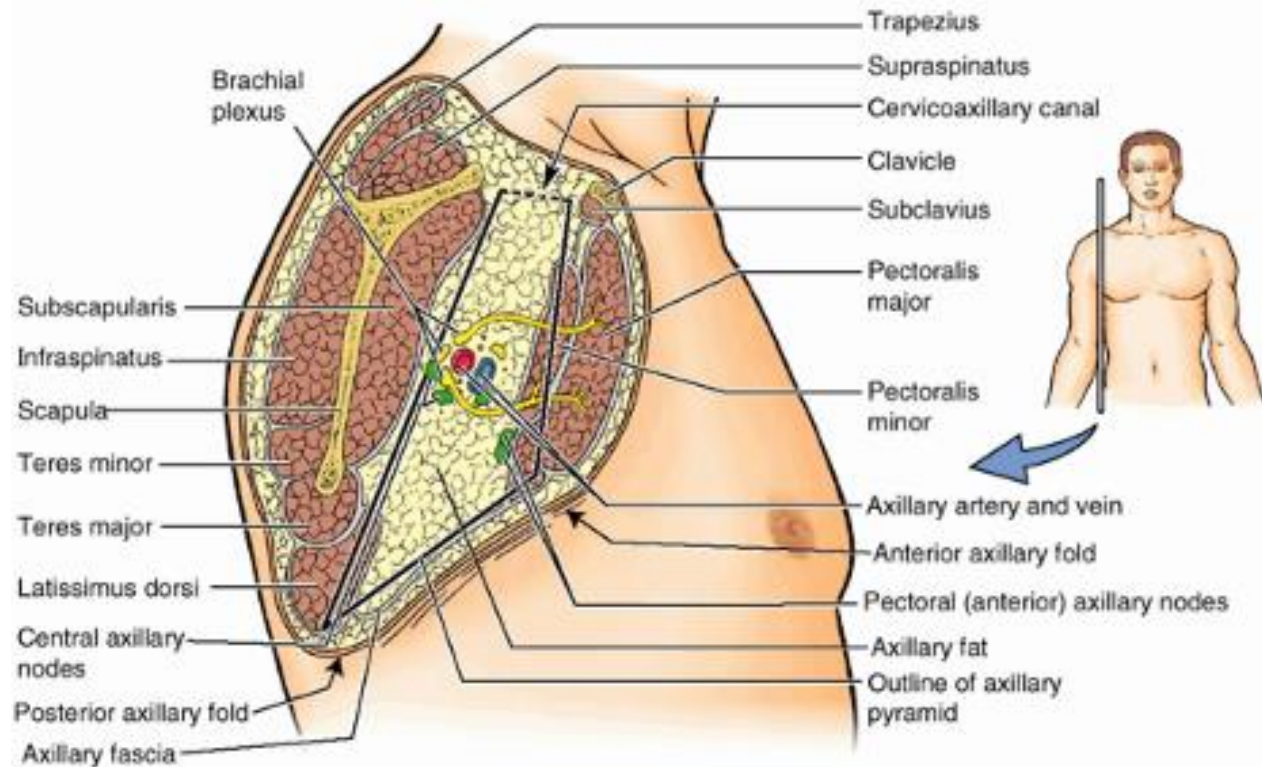


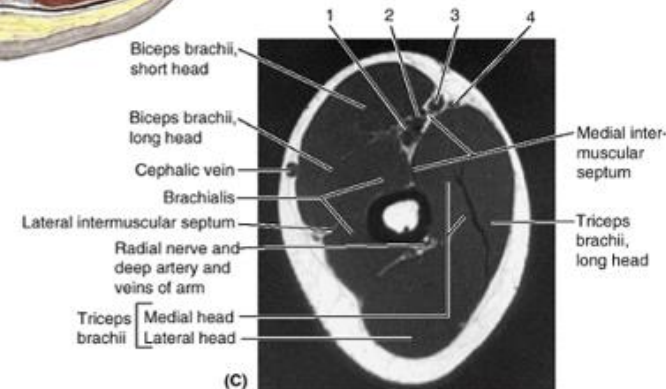
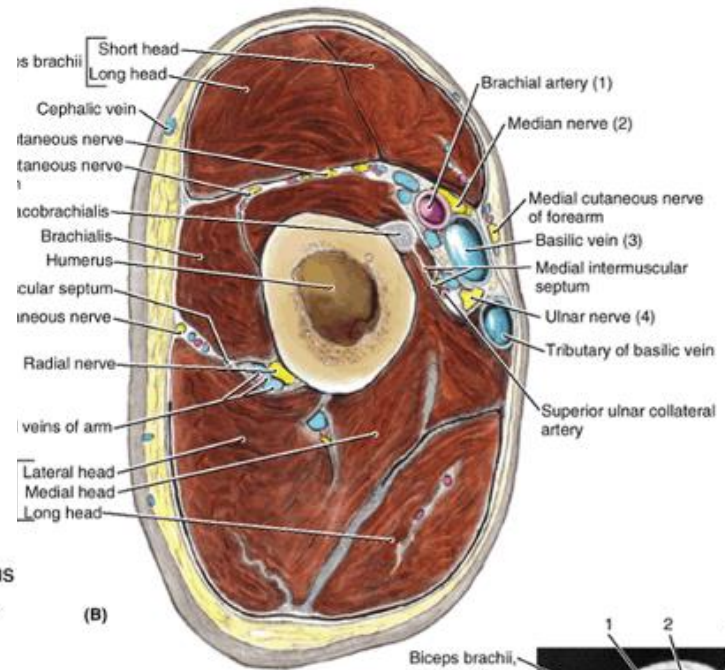
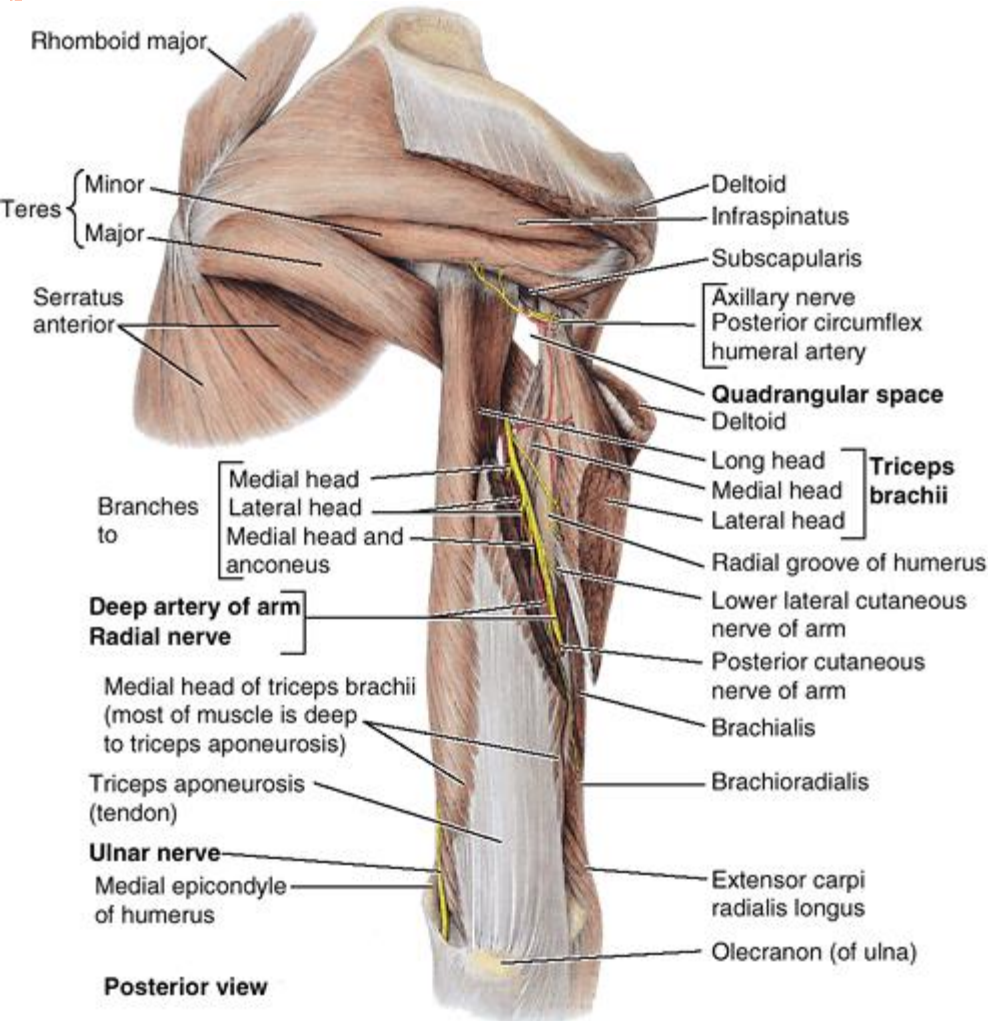


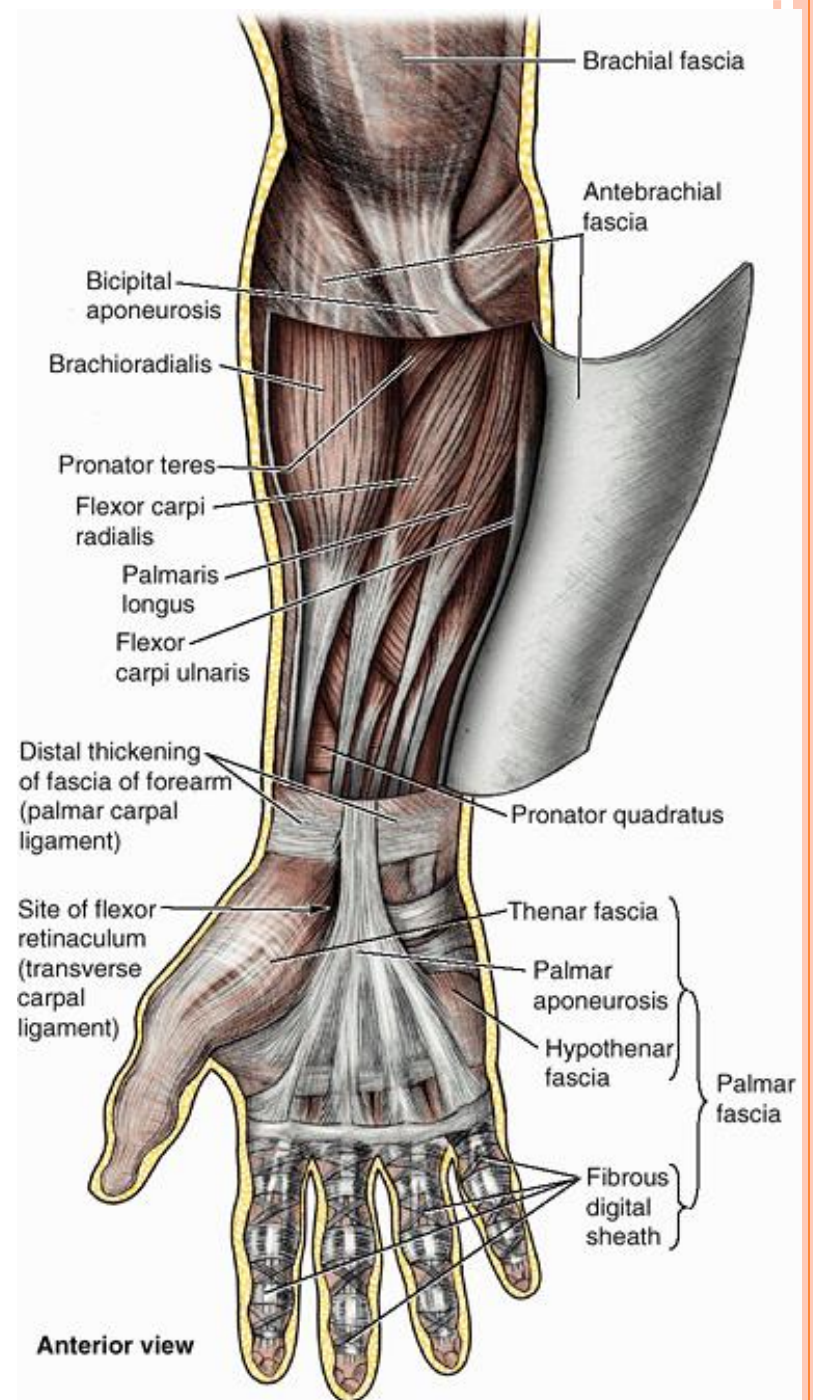
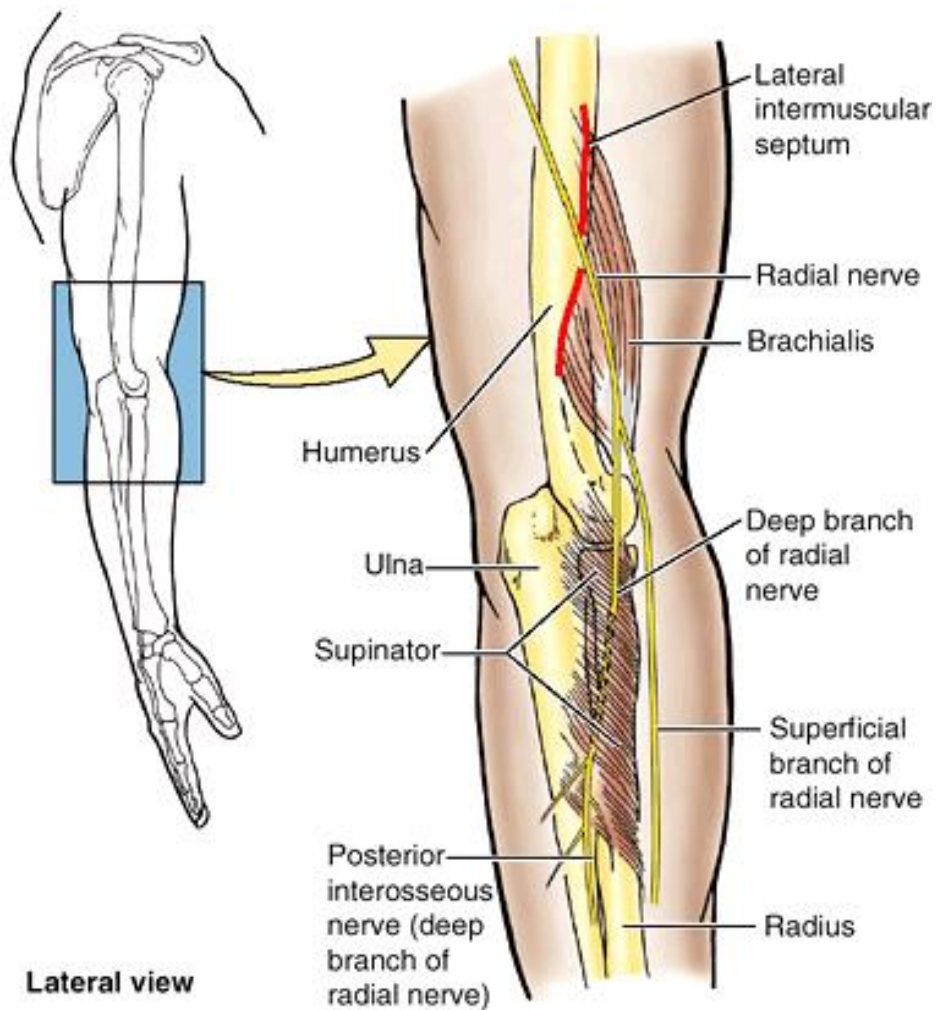
(A) Anterior view

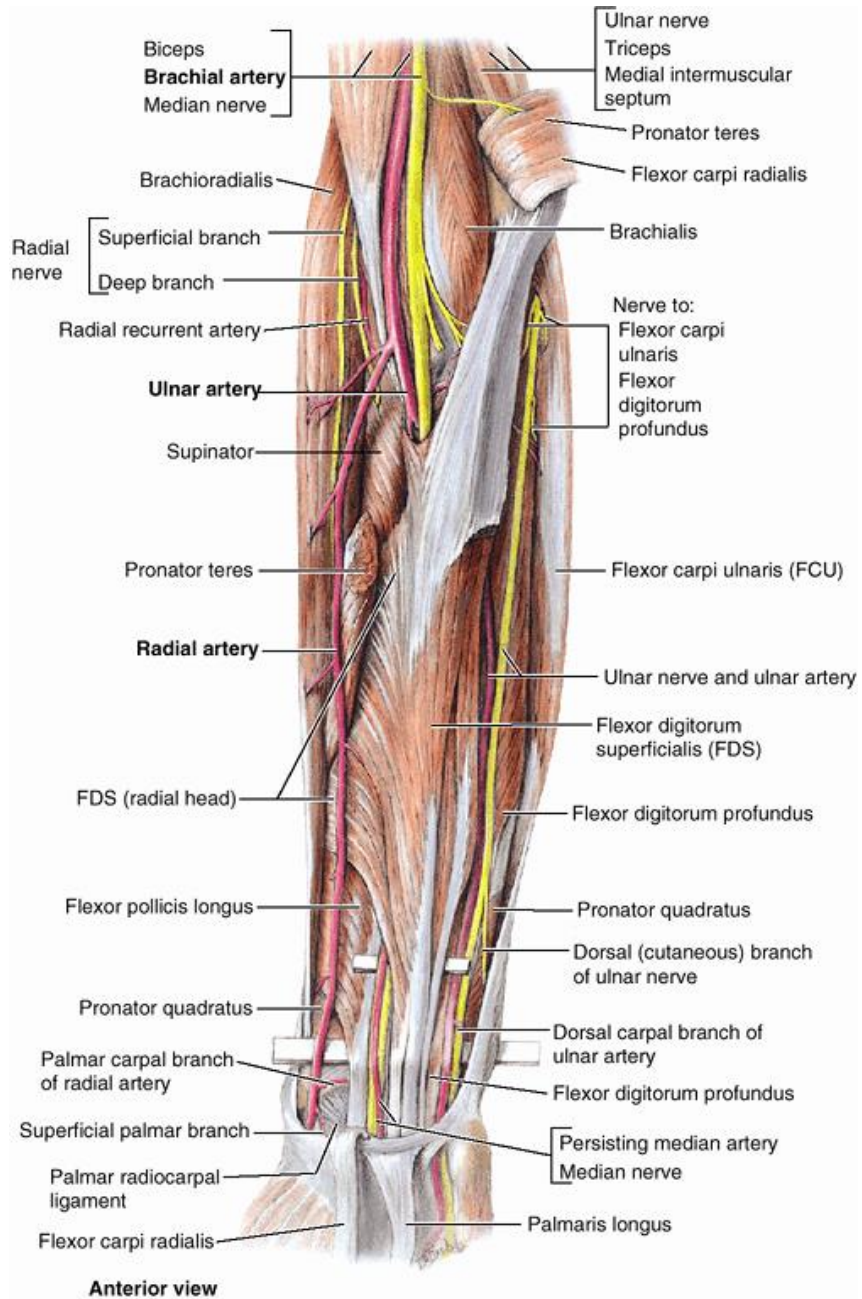
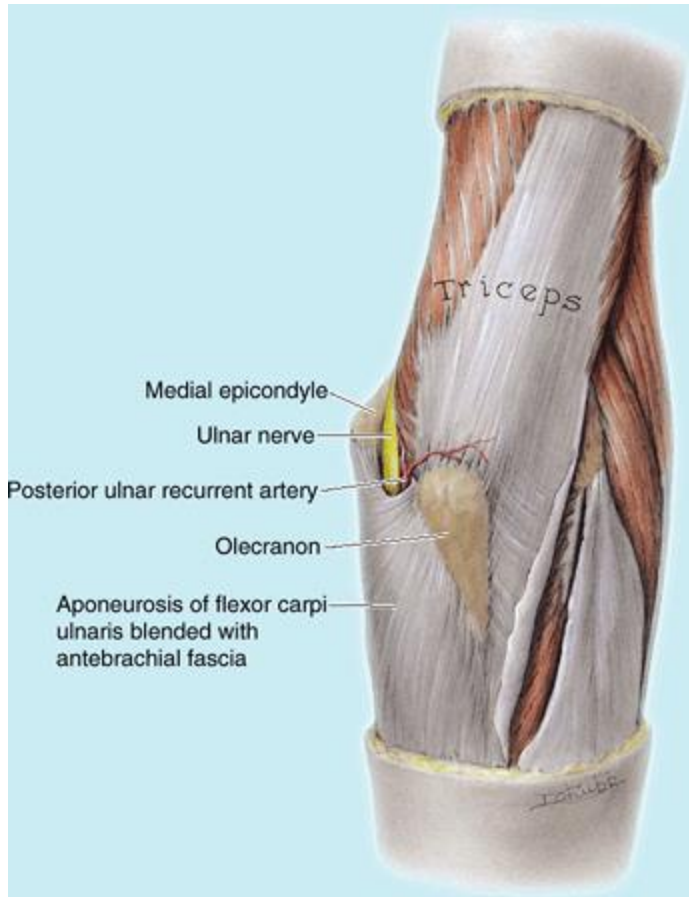


(B) Inferior view of transverse section





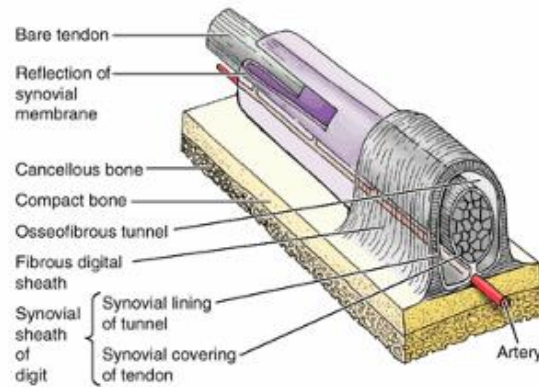




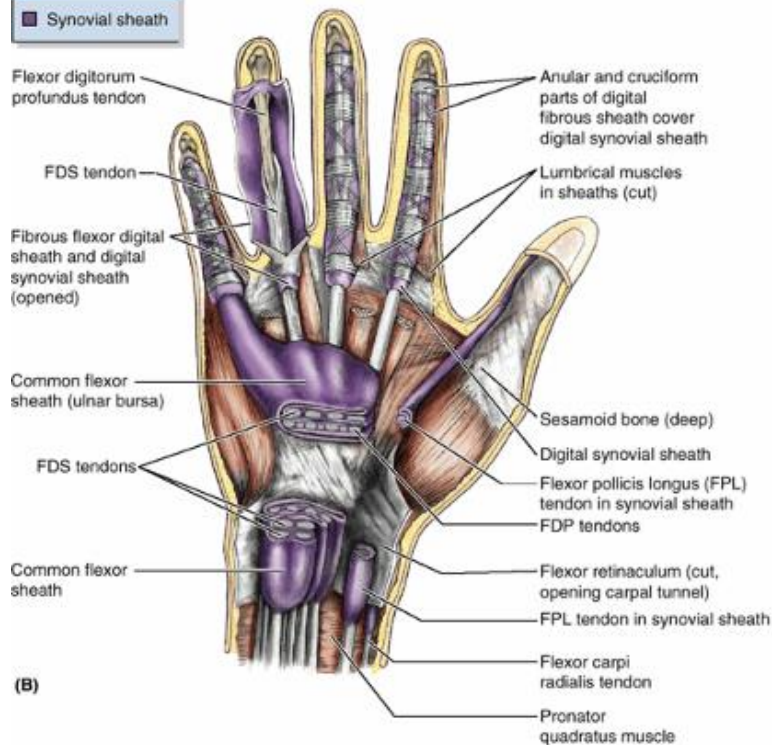
Anterior view



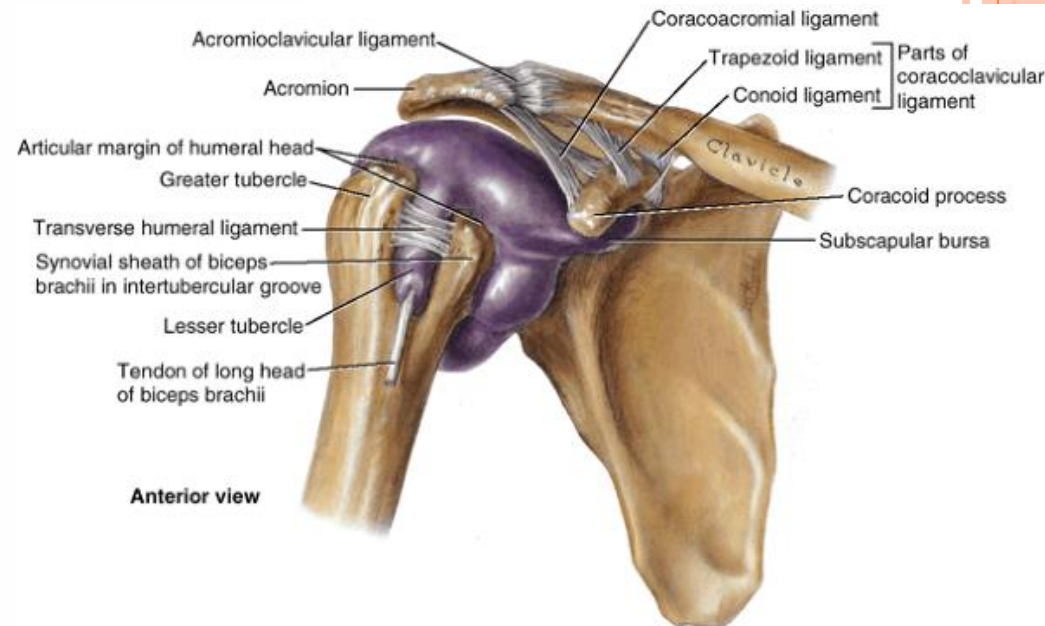
(A)



(C)



(B)



Anterior view

