

Universitatea de Stat de Medicină și Farmacie

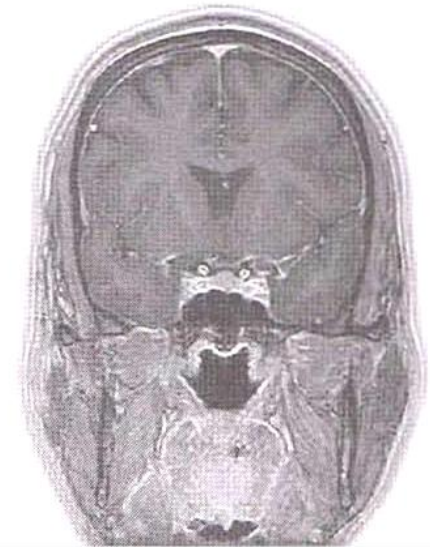
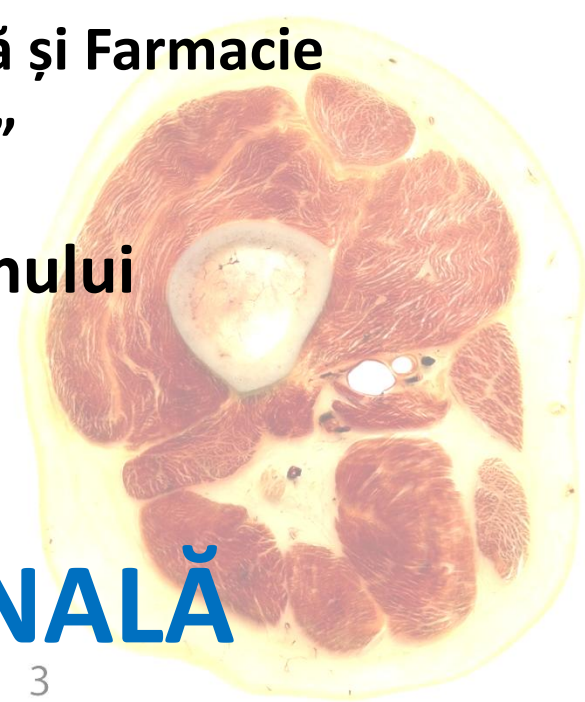
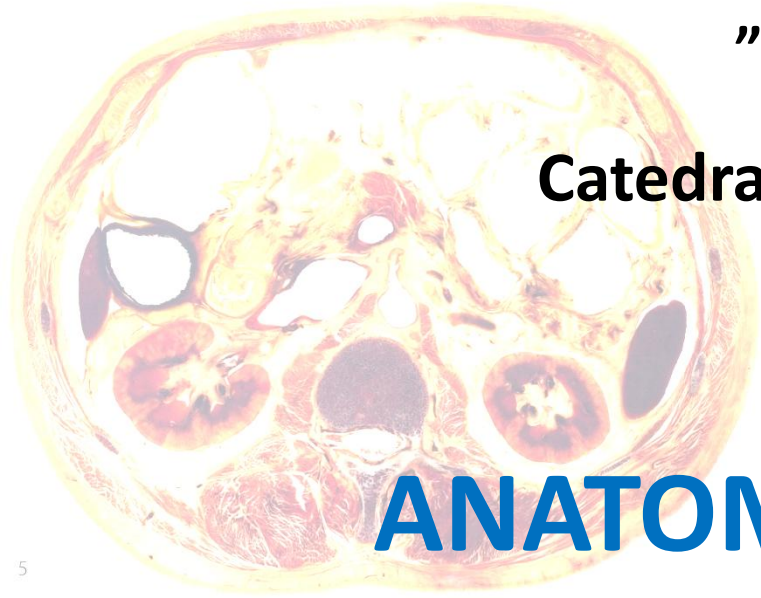
”Nicolae Testemițanu”

Catedra de Anatomie a omului

ANATOMIE SECȚIONALĂ

Sectional Anatomy

Lecturer Lilian Globa





**CD 8.5.1 CURRICULUM DISCIPLINĂ
PENTRU STUDII UNIVERSITARE**

Redacția:	07
Data:	15.04.2019
Pag.	1/10

**FACULTATEA DE MEDICINĂ
PROGRAMĂ DE STUDII 0912.1 MEDICINĂ
CATEDRA DE ANATOMIE A OMULUI**

APROBATĂ

la ședința Comisiei de asigurare a calității și
evaluării curriculare facultatea Medicină
Proces verbal Nr. 2 din 5-11-2019
Președinte
conf.univ., dr. hab. șt. med.

Suman Serghei

APROBATĂ

la ședința Consiliului Facultății de Medicină nr. 1
Proces verbal Nr. 2 din 19-11-2019
Decanul Facultății,
conf.univ., dr. hab. șt. med.

Plăcintă Gheorghe

APROBATĂ

la ședința Catedrei de anatomie a omului
Proces verbal nr. 15 din 11.06.2019
Șef catedră, dr. hab. șt. med. prof. univ.

Catereniuc Ilia

CURRICULUM

DISCIPLINA ANATOMIA OMULUI
Anatomia sectională

Studii integrate

Tipul cursului: **Disciplină opțională**

Chişinău, 2019

V. TEMATICA ȘI REPARTIZAREA ORIENTATIVĂ A ORELOR

Nr. d/o	TEMA	Numărul de ore		
		Curs	Lucrări practice	Lucru individual
1.	Anatomia secționată. Definiție. Procedee de obținere a imaginilor anatomice și mediate paraclinic (RMN, TC, USG) Scurt istoric al evoluției cunoștințelor privind anatomia secționată. Planuri secționale.	1	1	1
2.	Anatomia secționată a membrului superior	1	1	1
3.	Anatomia secționată a membrului inferior	1	1	1
4.	Anatomia secționată a toracelui	1	1	1
5.	Anatomia secționată a abdomenului	1	1	1
6.	Anatomia secționată a bazinului	1	1	1
7.	Anatomia secționată a capului și gâtului	2	2	2
8.	Anatomia secționată a sistemului nervos	2	2	2
Total		10	10	10
TOTAL			30	

X. BILIOGRAFIE RECOMANDATĂ

A. Obligatorie:

Materialele cursurilor.

B. Suplimentară:

1. Visible human project, https://www.nlm.nih.gov/research/visible/visible_gallery.html
2. Online MRI and CT sectional anatomy, <https://omcsa.org/>
3. MRI masters, <https://mrimaster.com/anatomy%20brain%20sagittal.html>
4. Cross sectional Anatomy, <https://www.sciencedirect.com/topics/medicine-and-dentistry/cross-sectional-anatomy>
5. <https://www.kenhub.com/en/start/cross-sections>
6. Atlas of sectional Anatomy, Thieme, all systems
7. Human Sectional Anatomy: Pocket atlas of body sections, CT and MRI images, Fourth edition, 2017
8. Keith L. Moore, Artur F. Dalley, Anne M.R. Agur. Clinically Oriented Anatomy, 6-th ed., 2007.

Visible Human Project

[Applications](#) | [Sources](#) | [Projects](#) | [Tools](#) | [Media productions](#) | [Related Projects](#)

[Home](#) > [Visible Human Home](#)

Visible Human Project[®] Gallery

The collection of images appearing here is a small sample of images from the Visible Human Project[®] male dataset. For a larger collection of images, employ one of the applications for viewing the Visible Human dataset.

The Visible Human datasets are divided into six slightly overlapping subsets entitled Head, Thorax, Abdomen, Pelvis, Thighs, and Feet.

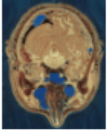
- [From head to toe: an animated trip through the Visible Human male cryosections](#) [Video: color MPEG, 770810 bytes]
 - The video is 17 seconds long, but it does not include any audio or captioning. It is an animation of head-to-toe images from the male cryosections. The video was created by the Human-Computer Interaction Lab at the University of Maryland at College Park.
- [Color Cryosections](#)
- [Computed Tomography \(CT\) scans](#):
 - [Fresh cadaver](#)
 - [Frozen cadaver](#)
- [Magnetic Resonance Imaging \(MRI\) scans](#)

Last Reviewed: August 14, 2015

Home > Visible Human Home

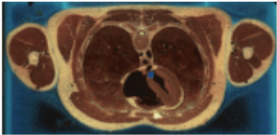
The Visible Human Project

Color Cryosections



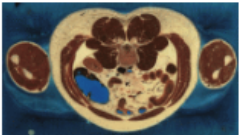
[545x700 24-bit color JPEG, 69069 bytes]

Section through Visible Human Male - head, including cerebellum, cerebral cortex, brainstem, nasal passages (from Head subset)



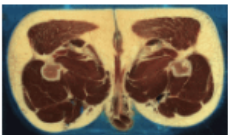
[836x417 24-bit color JPEG, 66320 bytes]

Section through Visible Human Male - thorax, including heart (with muscular left ventricle), lungs, spinal column, major vessels, musculature (from Thorax subset)



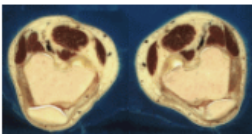
[786x459 24-bit color JPEG, 69920 bytes]

Section through Visible Human Male - abdomen, including large and small intestines, spinal column, musculature, subcutaneous fat (from Abdomen subset)



[749x450 24-bit color JPEG, 64159 bytes]

Section through Visible Human Male - upper thigh below femoral head, including prominent musculature, part of male reproductive system (from Pelvis subset)



[730x399 24-bit color JPEG, 51365 bytes]

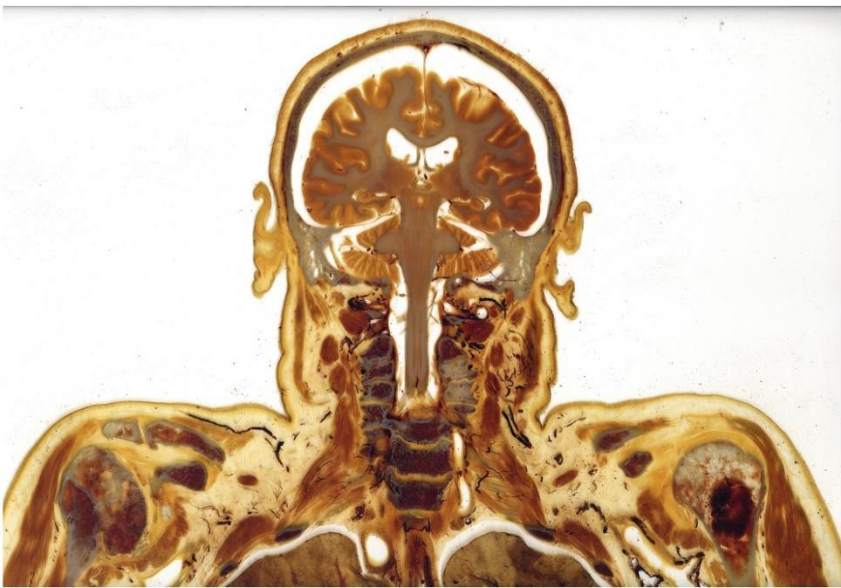
Section through Visible Human Male - knee, including patella (from Thigh subset)



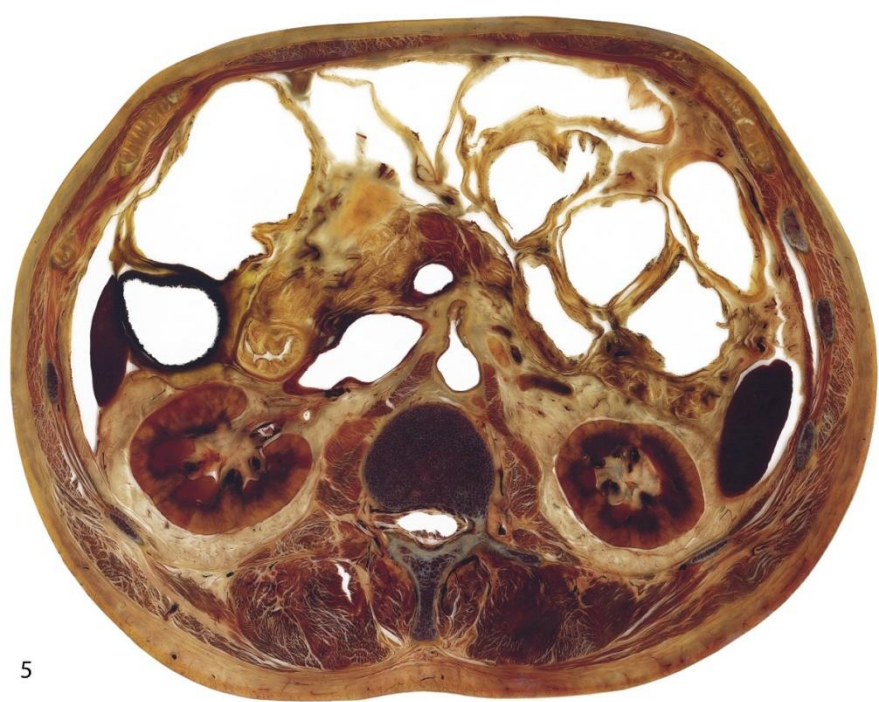
5



14



7



16

17

5

3

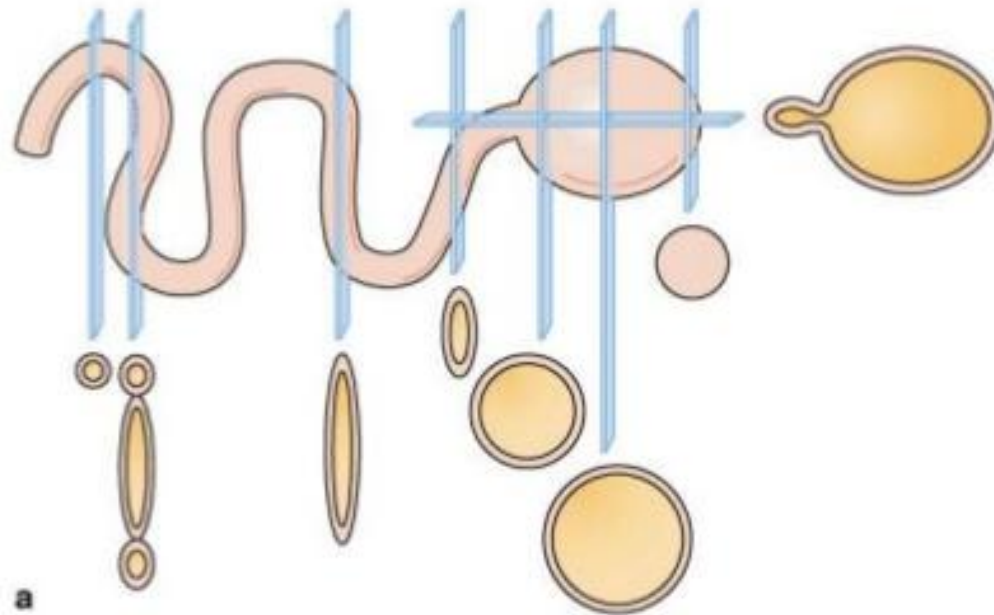


15

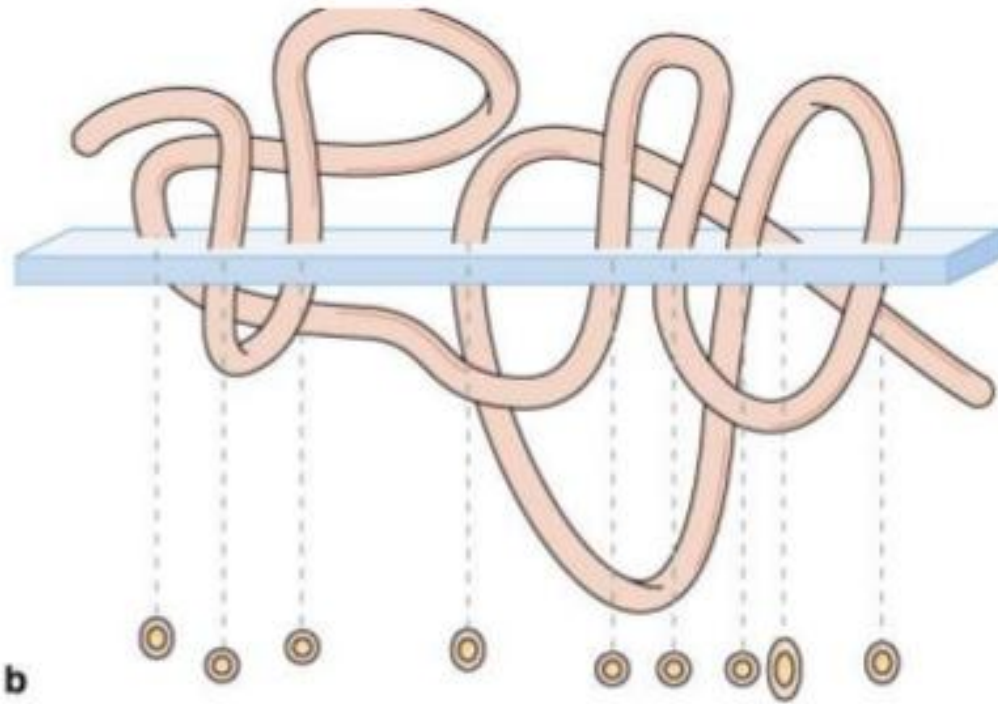


3

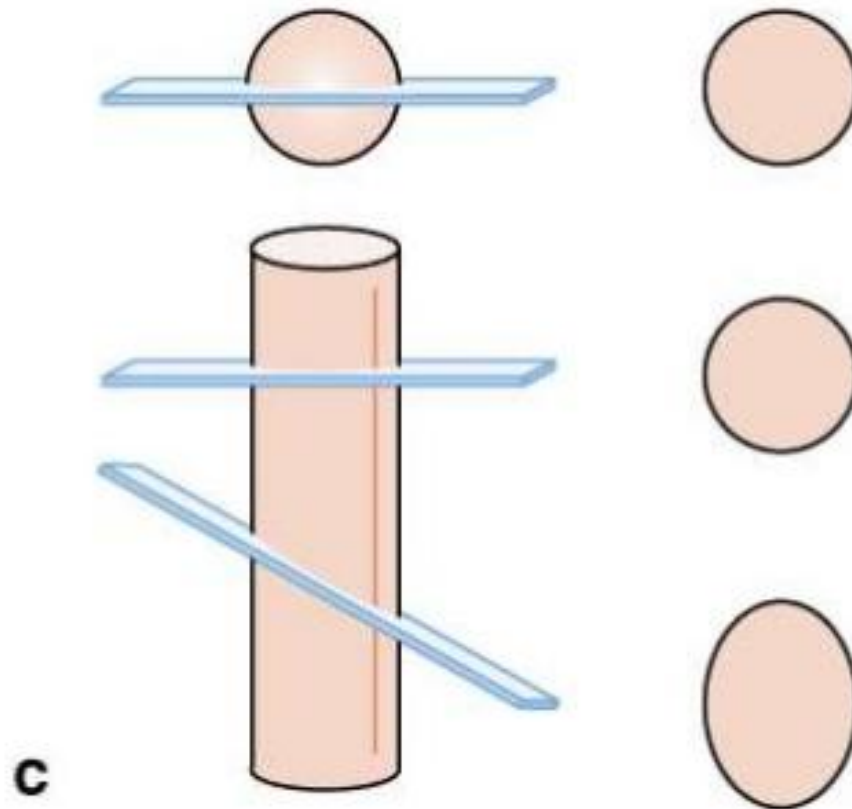
Interpretation of 3-D structures in 2-D tissue sections.



Sections through a hollow swelling on a tube produce large and small circles, oblique sections through bent regions of the tube produce ovals of various dimensions.

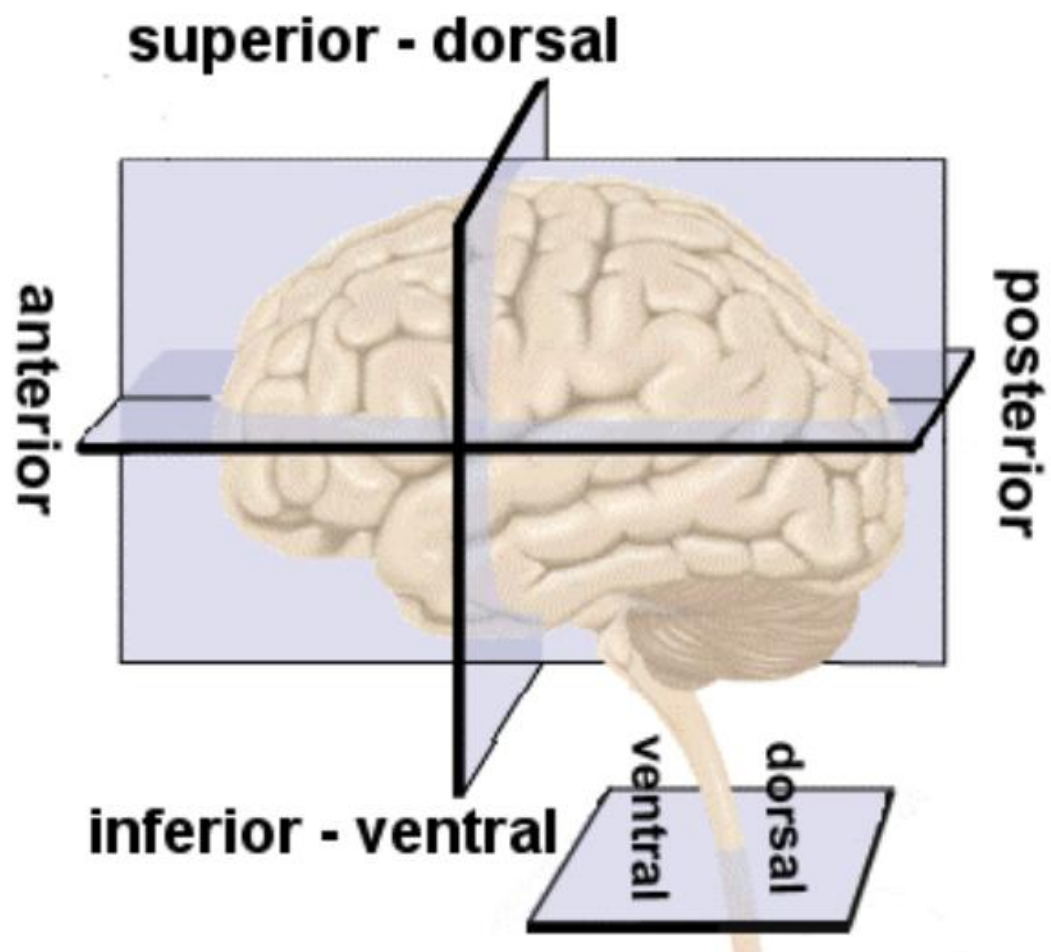


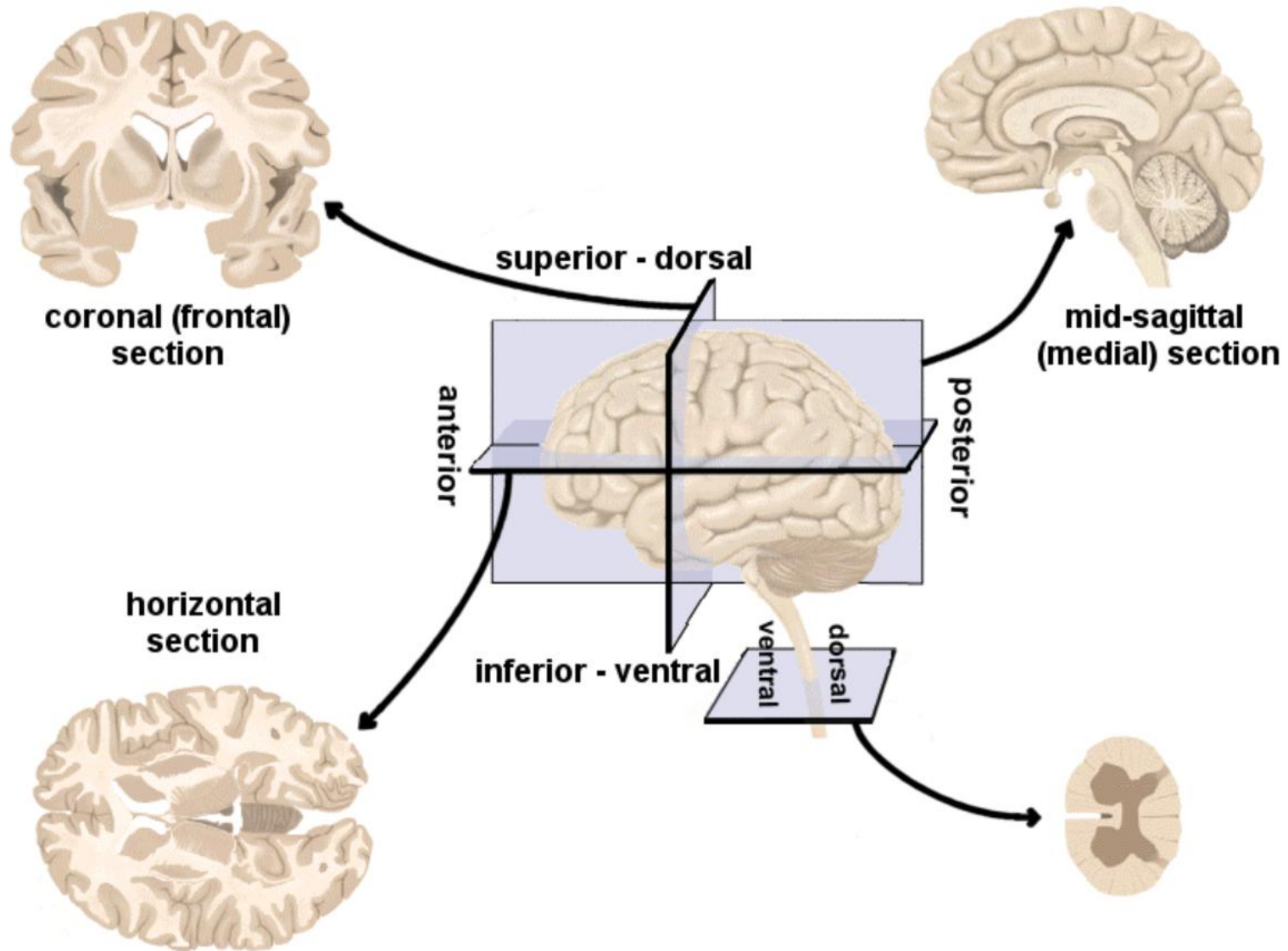
A single section through a highly coiled tube shows many small, separate round or oval sections. On first observation it may be difficult to realize that these represent a coiled tube, but it is important to develop such interpretive skill in understanding histological preparations.

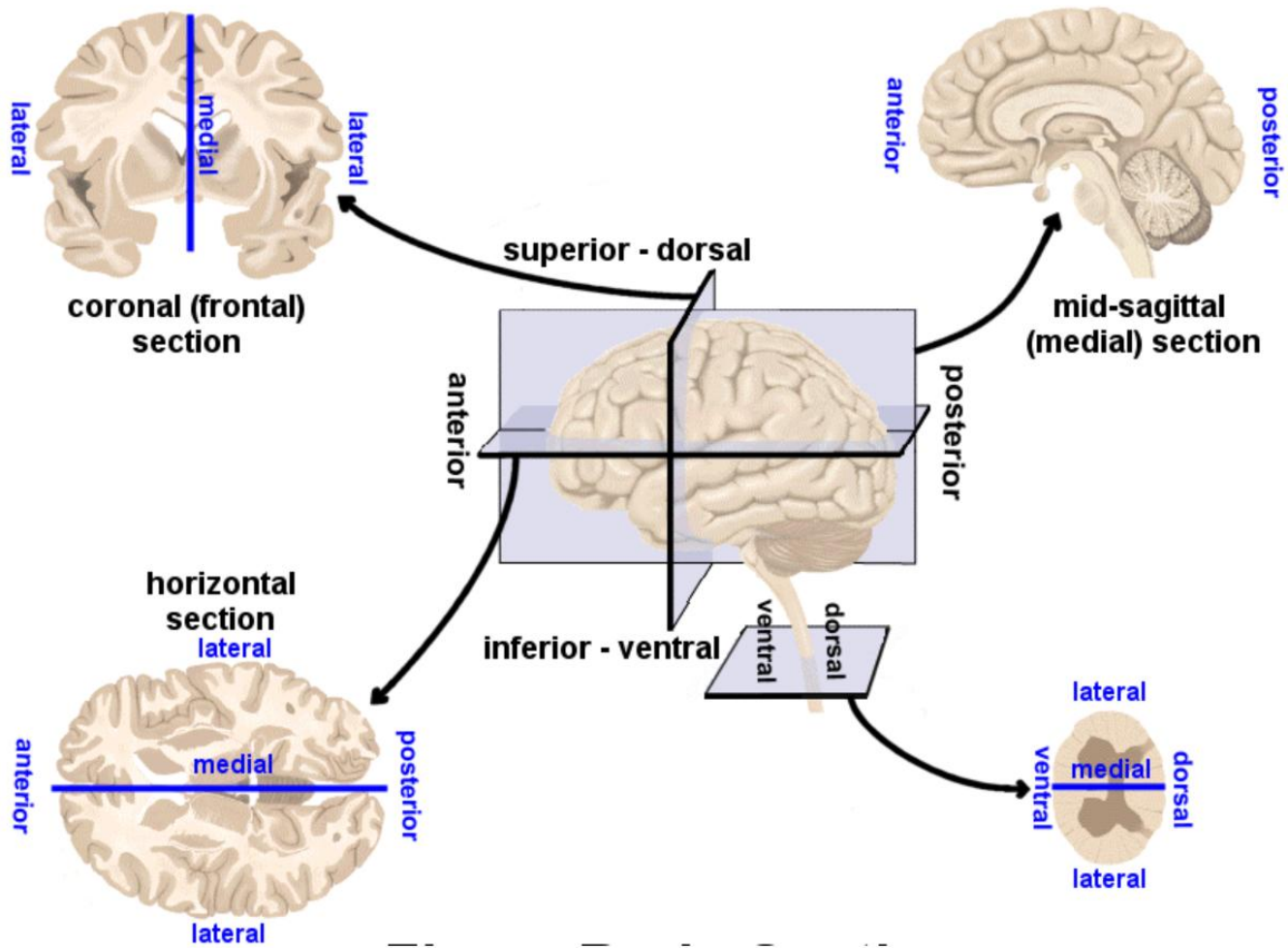


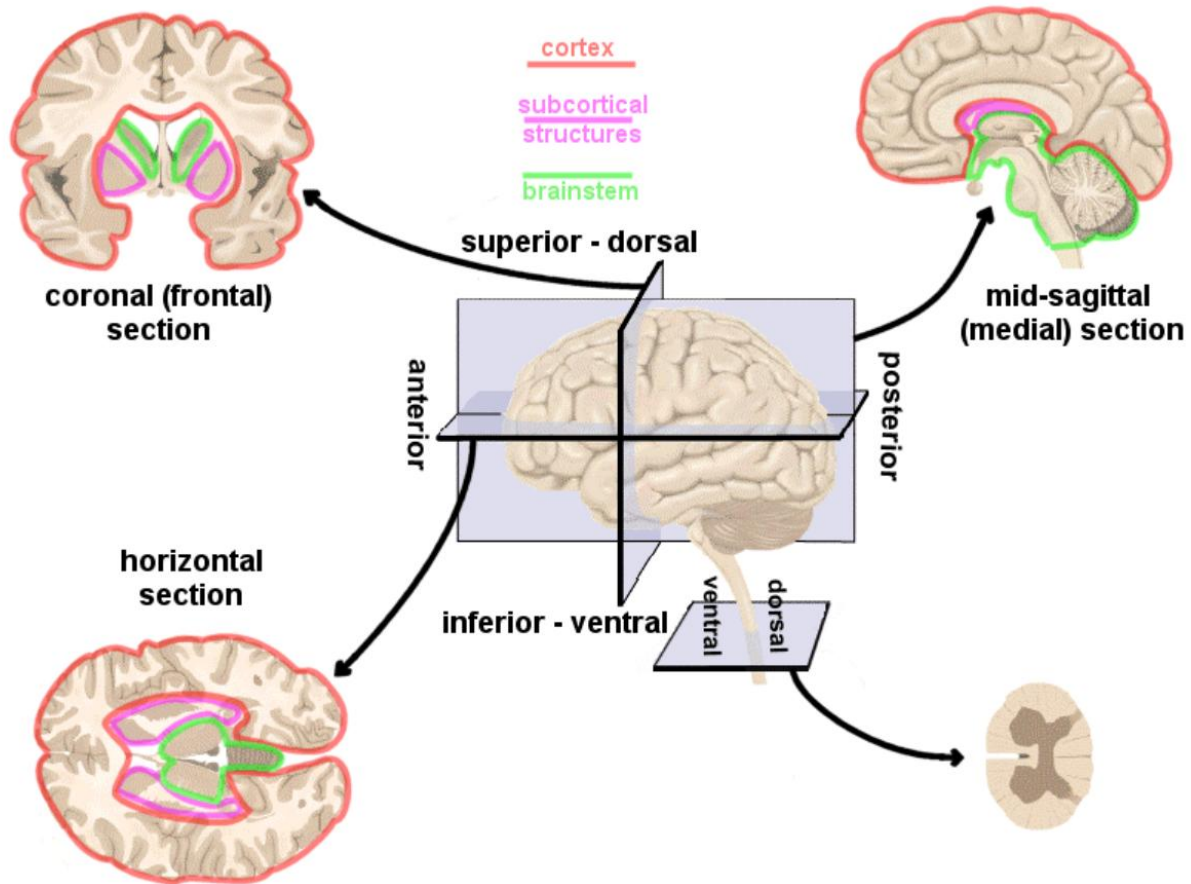
c

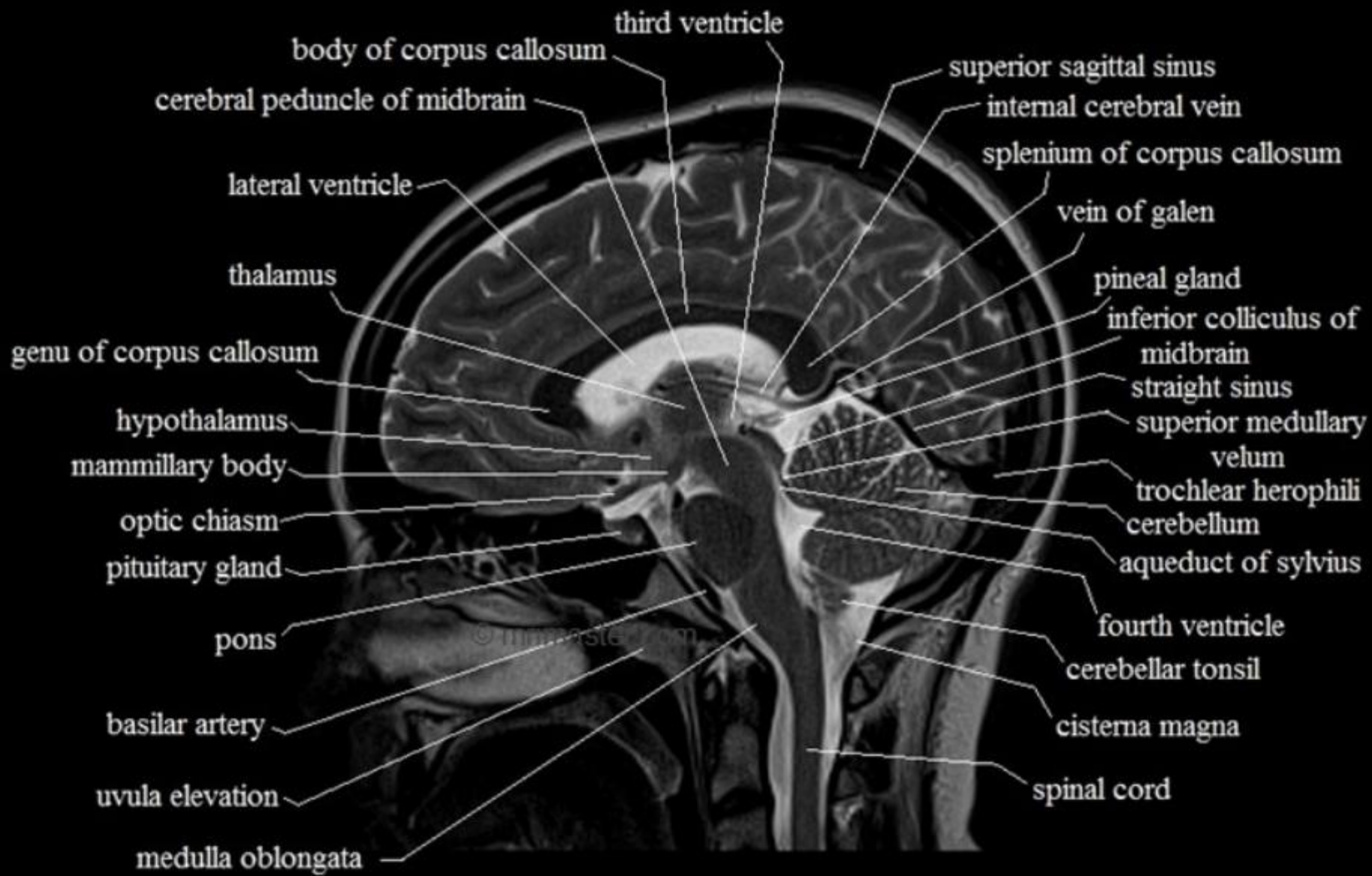
Round structures in sections may be portions of either spheres or cylinders. Additional sections or the appearance of similar nearby structures help reveal a more complete picture.

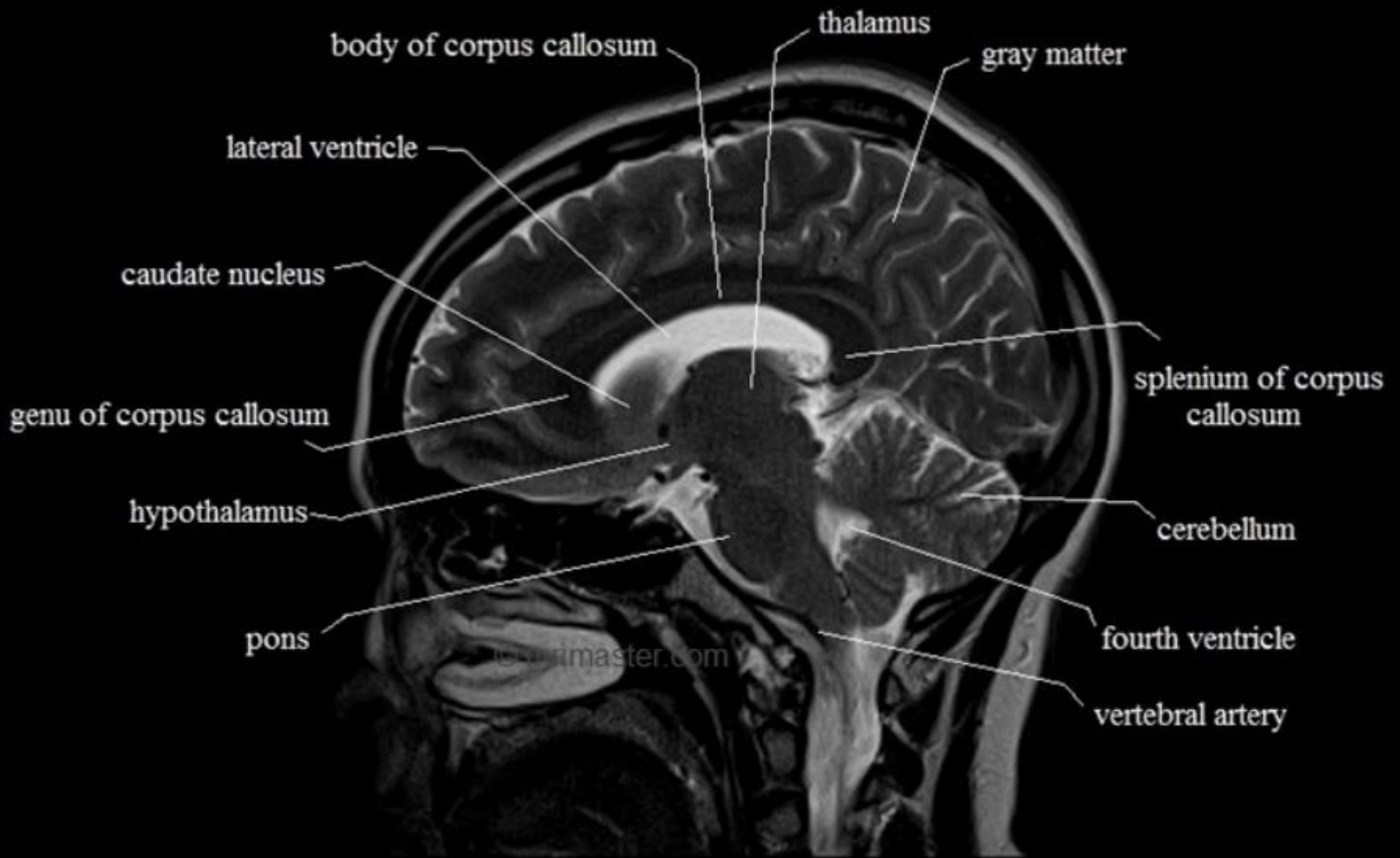


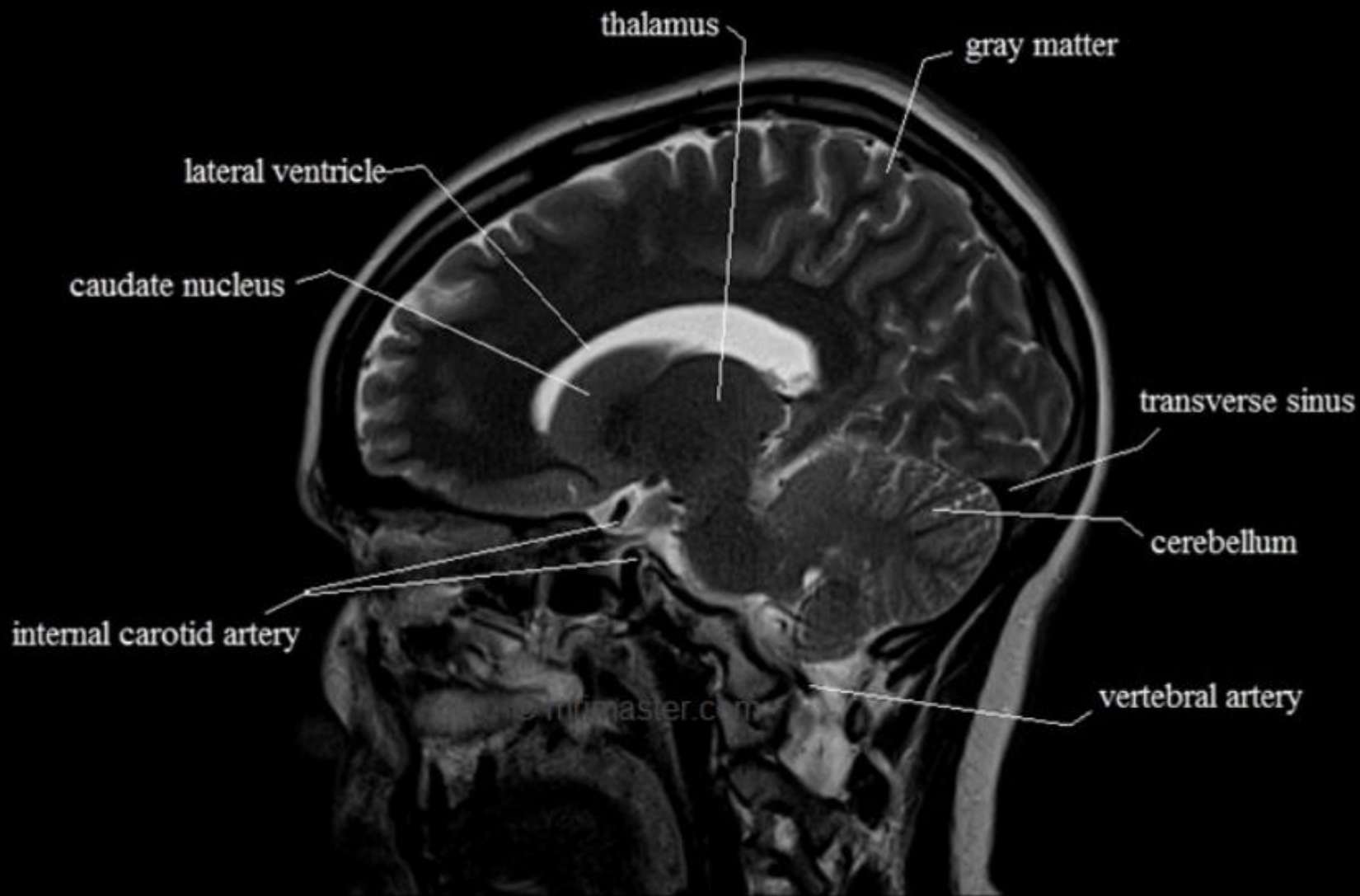


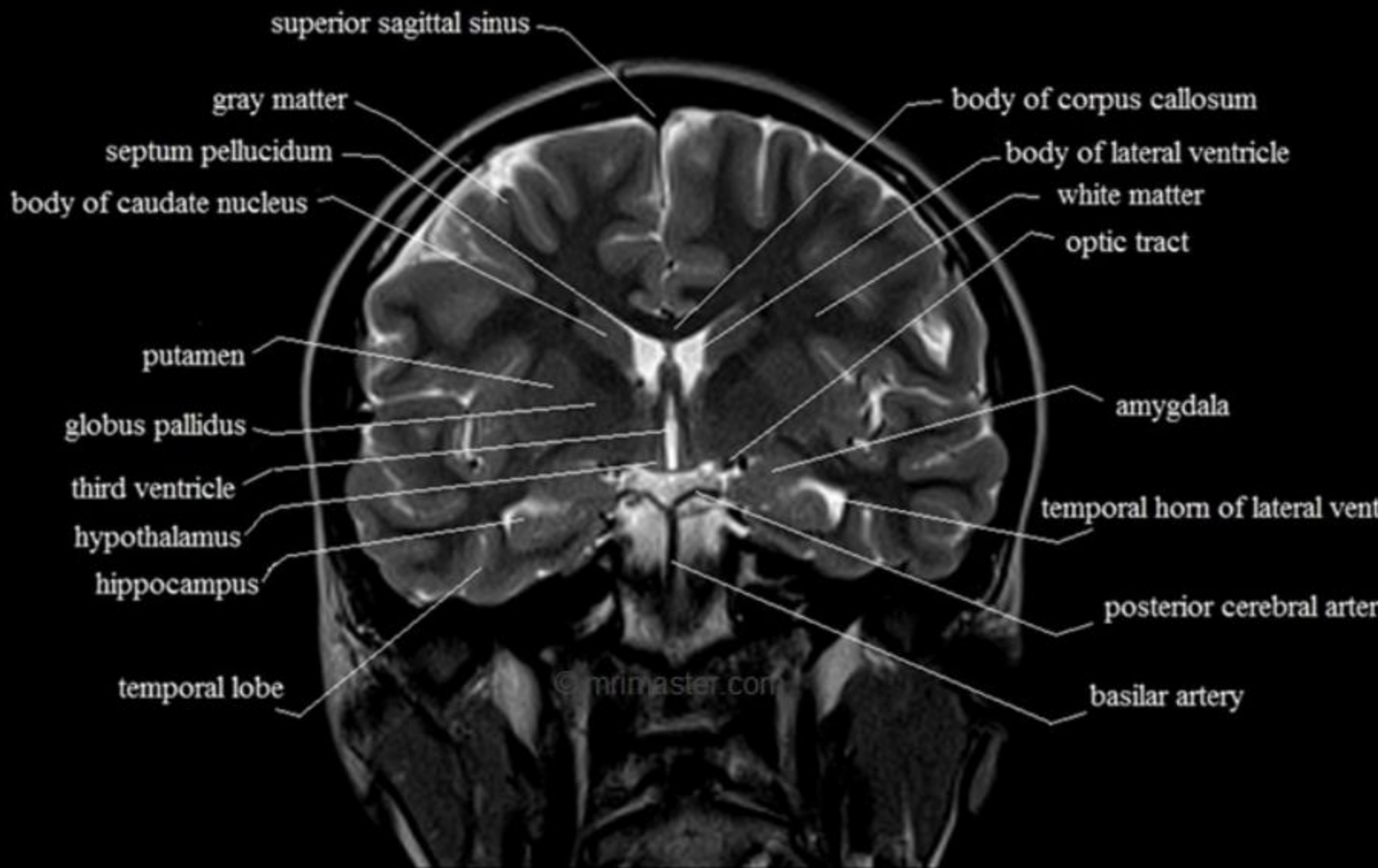


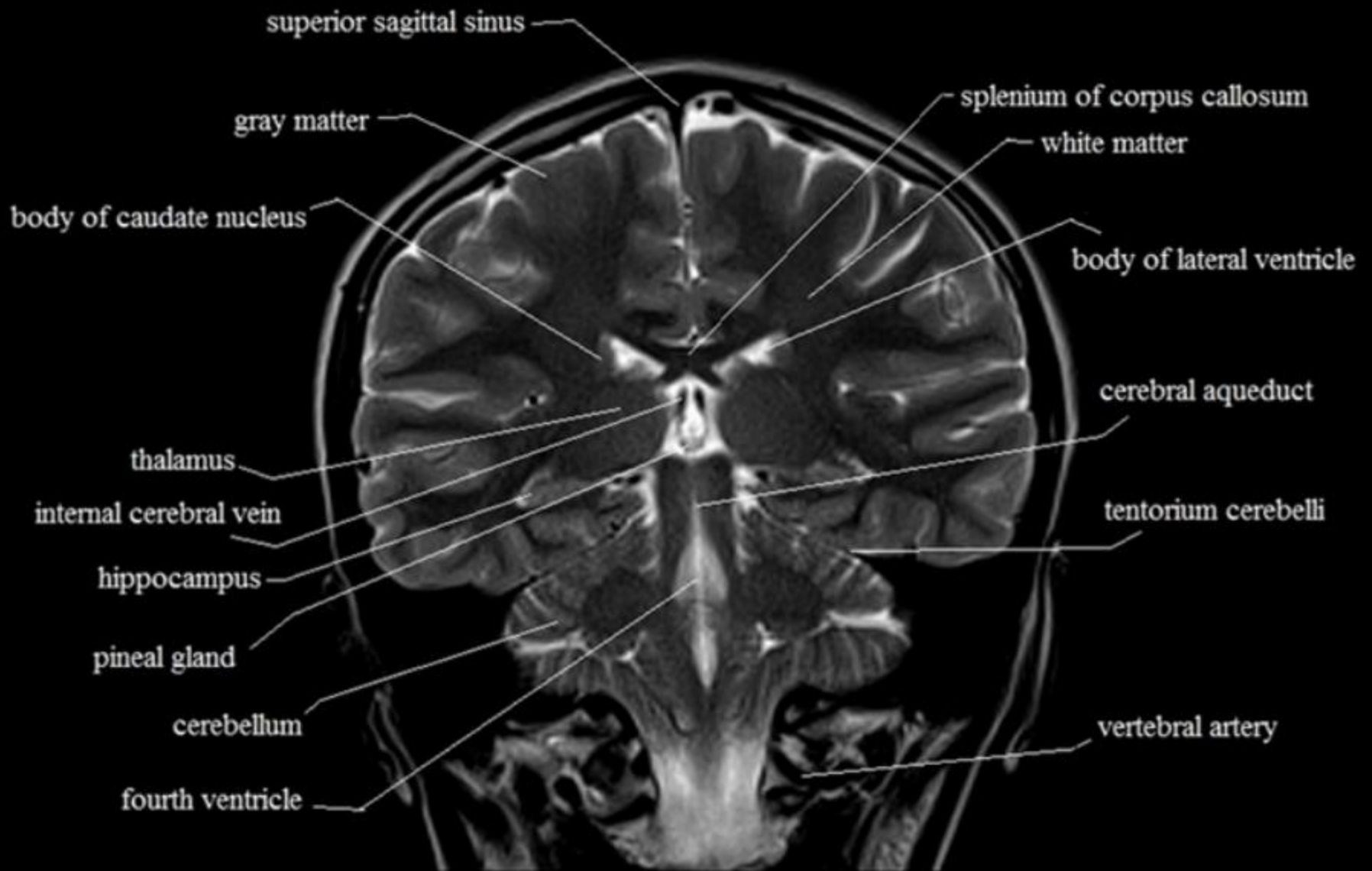


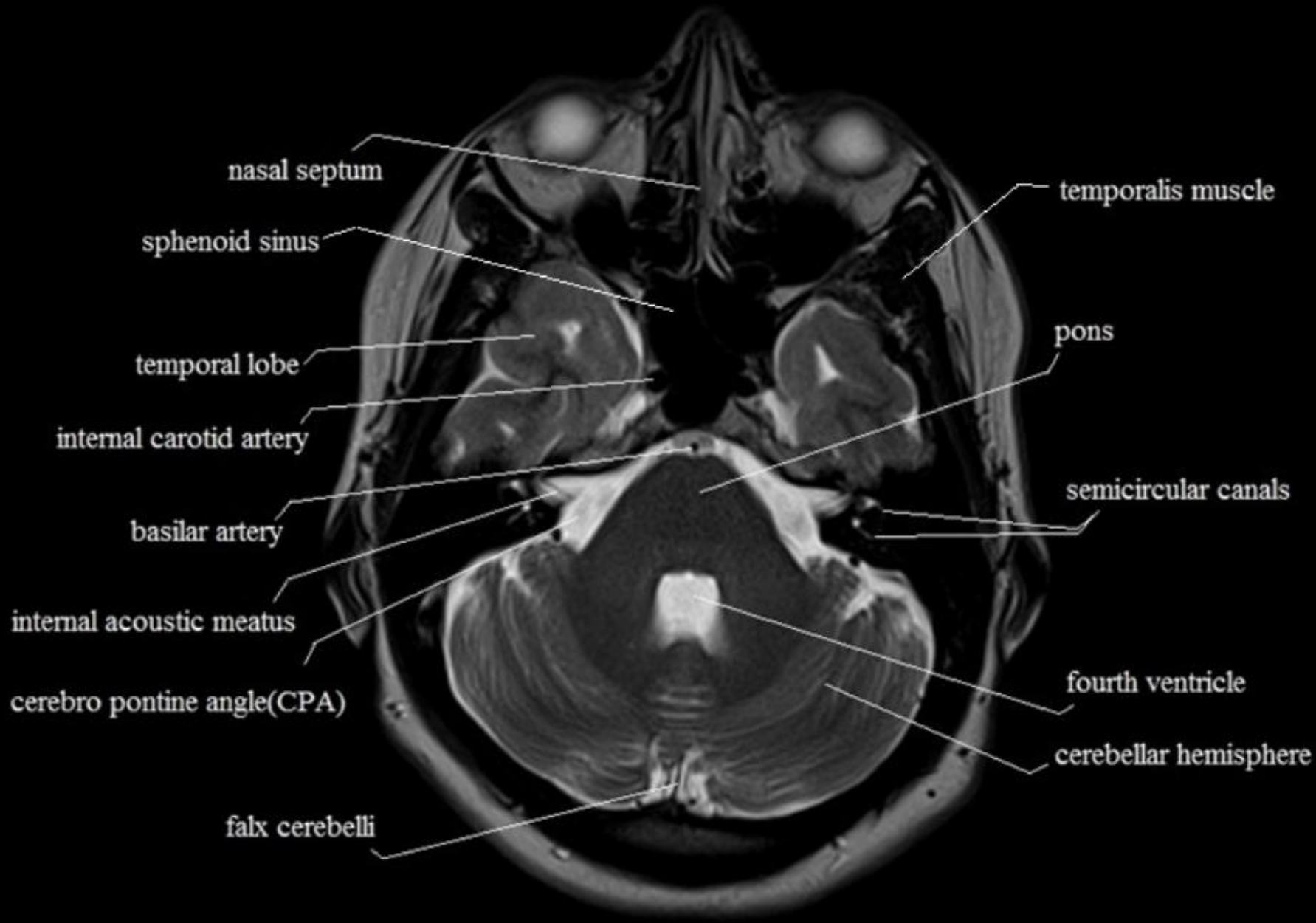


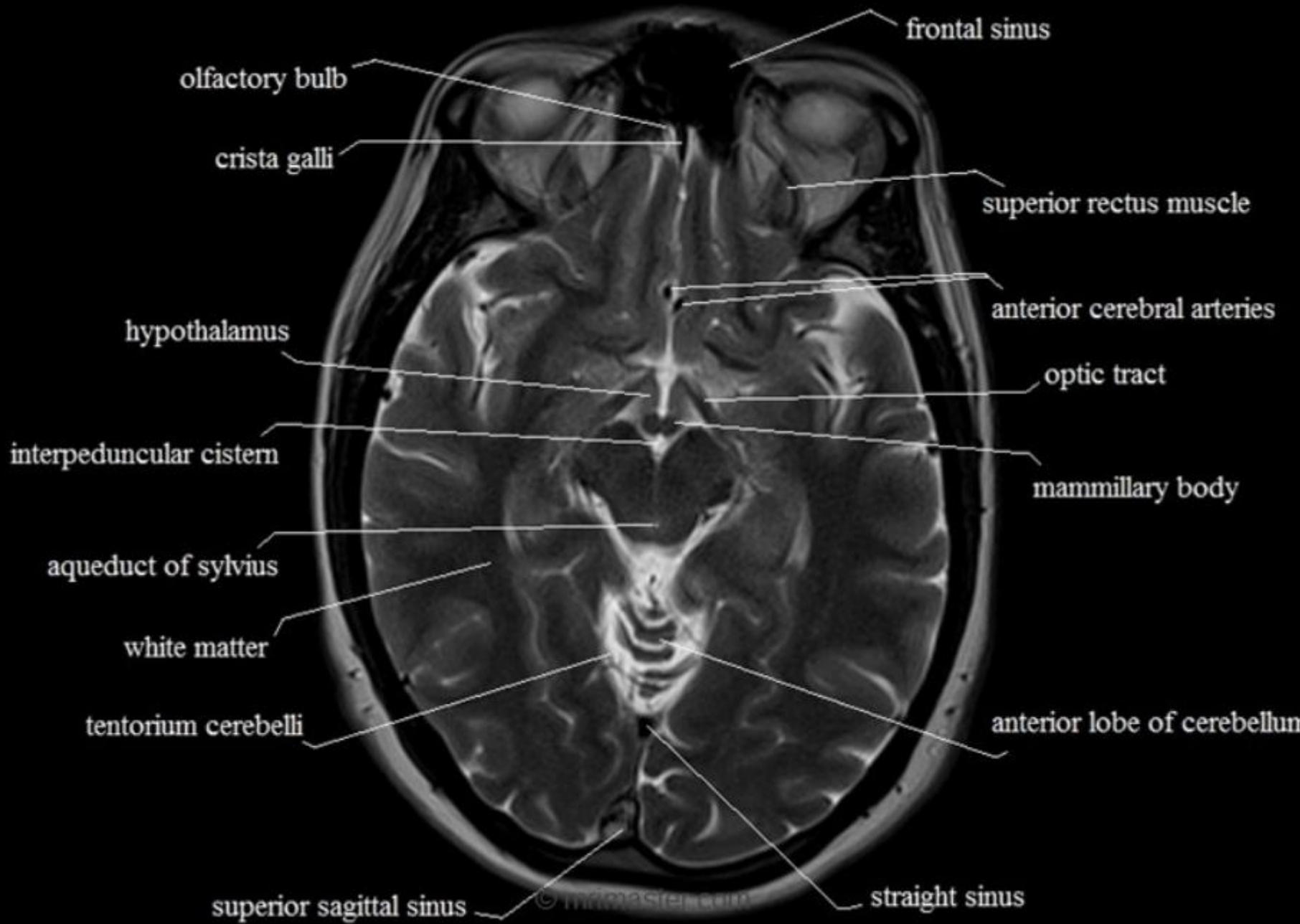


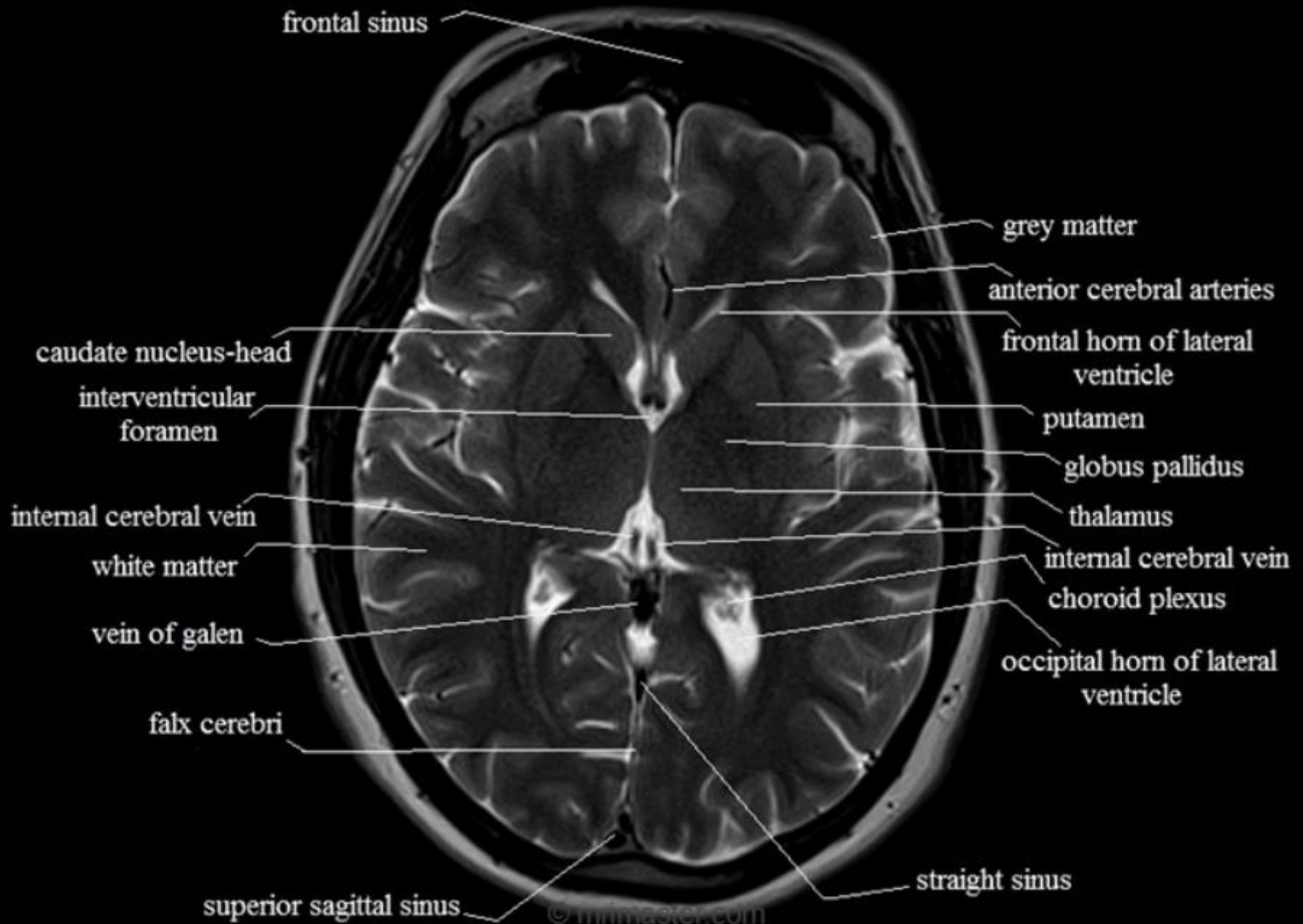


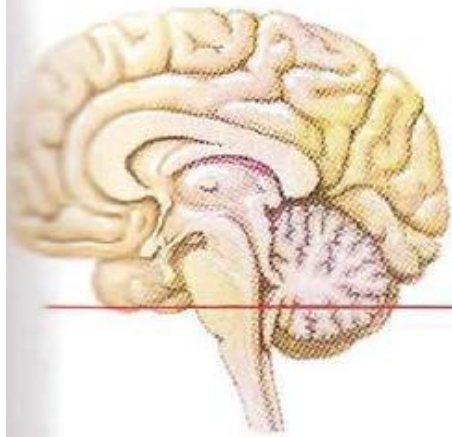




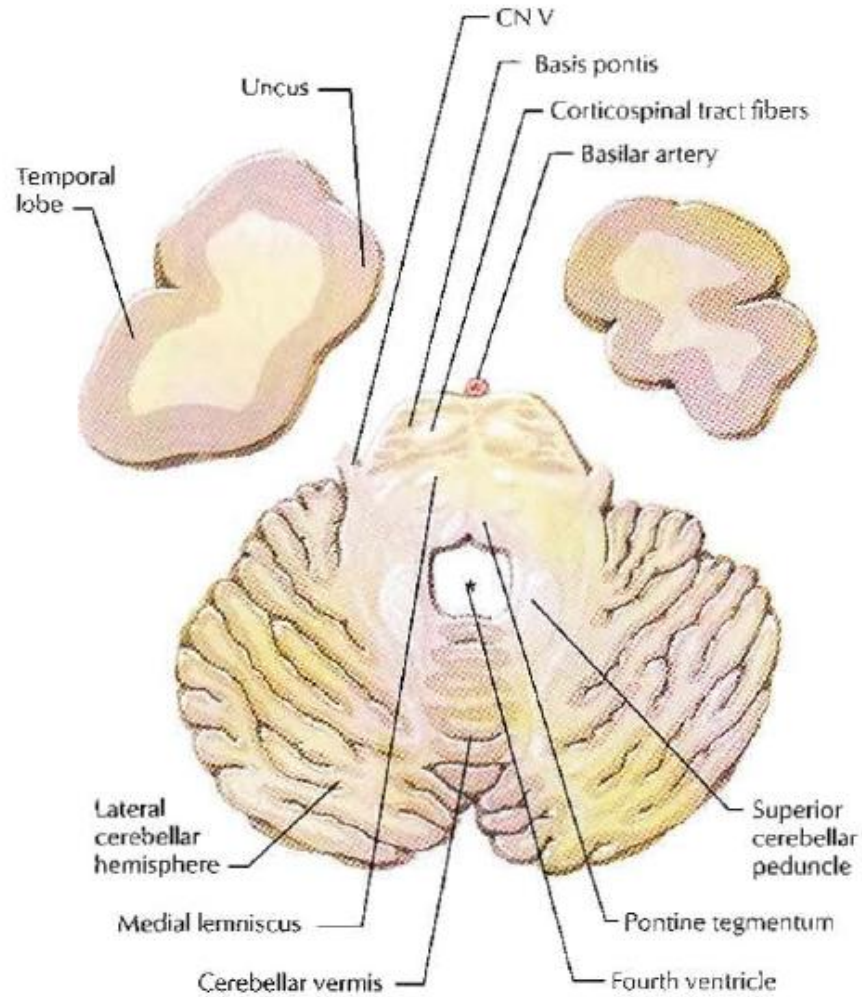


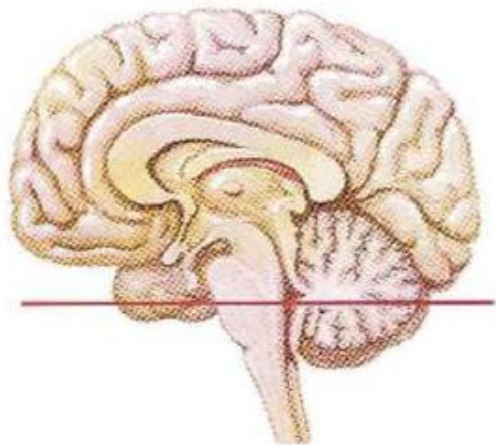




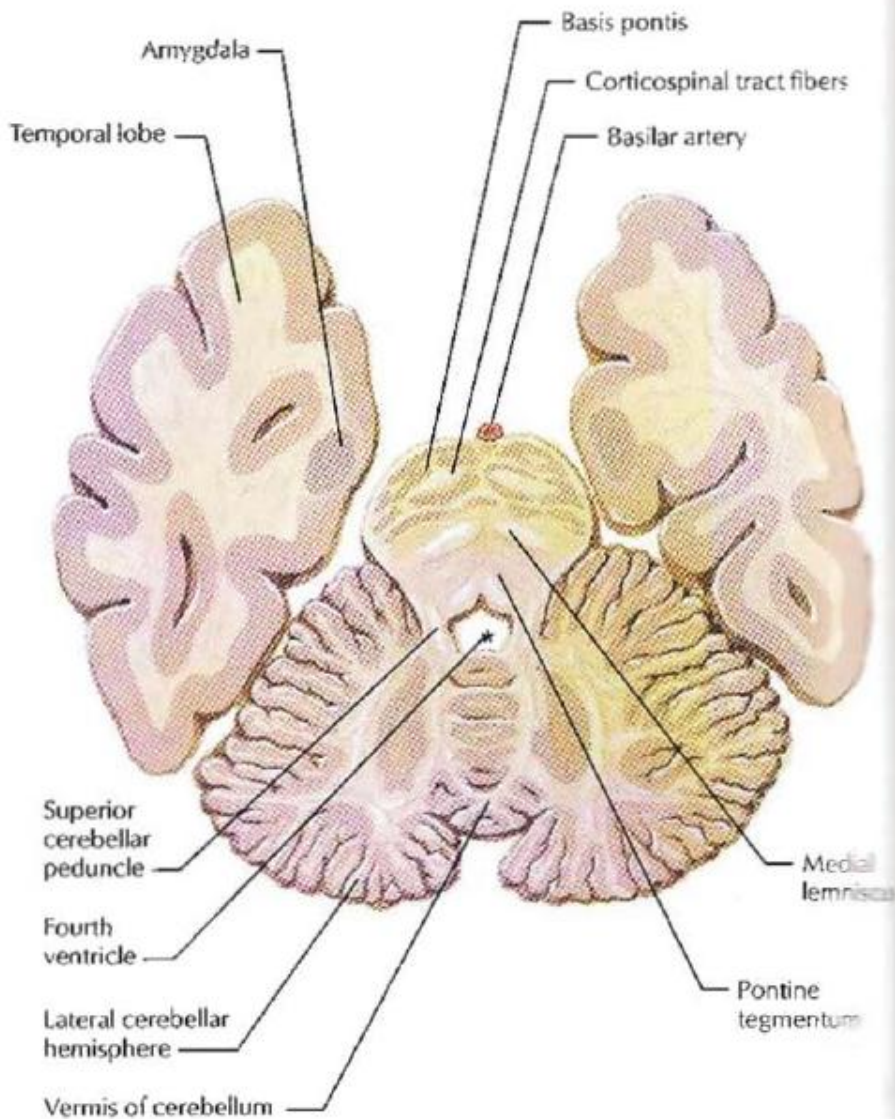


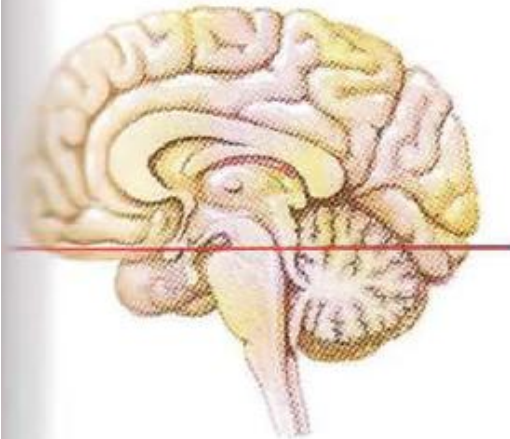
Level of section
(mid pons)



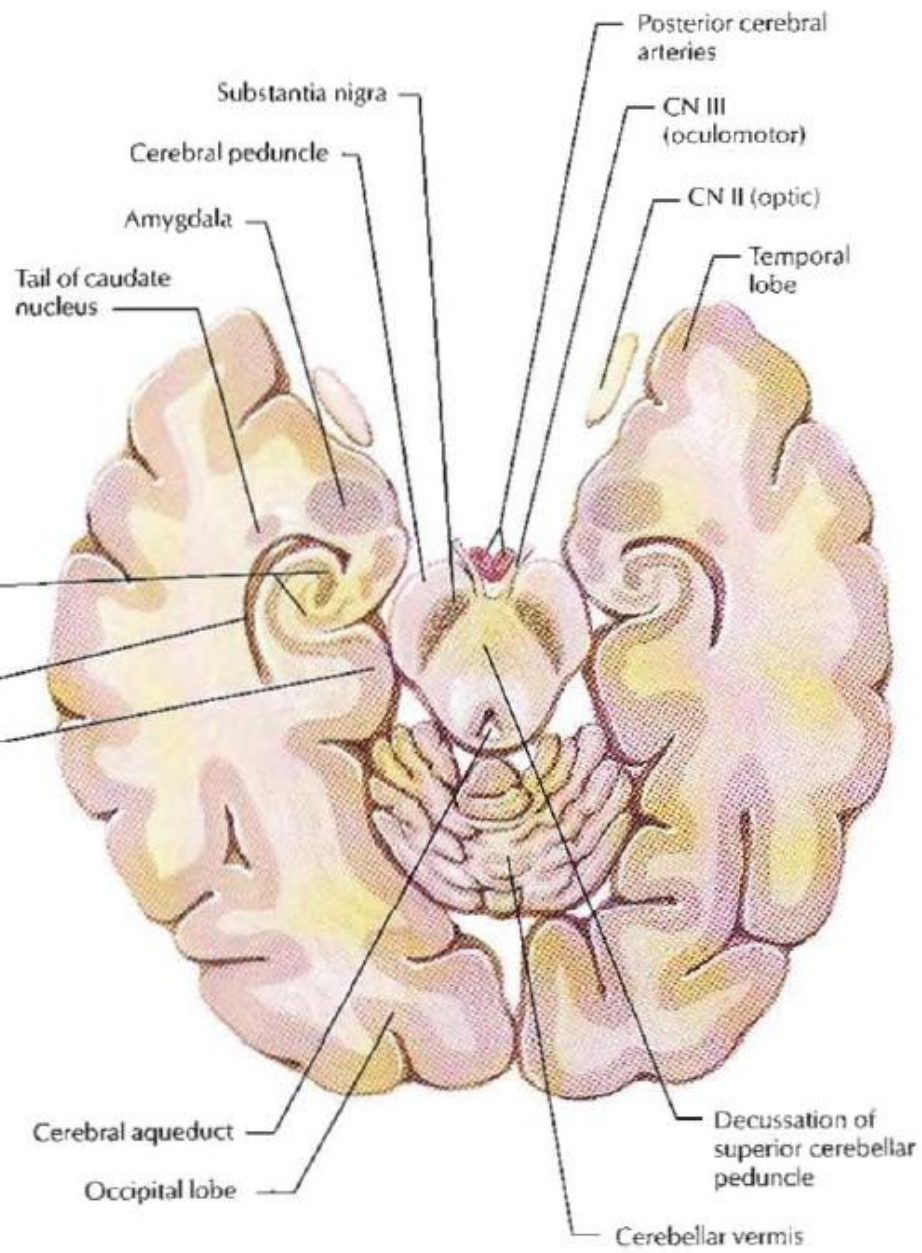


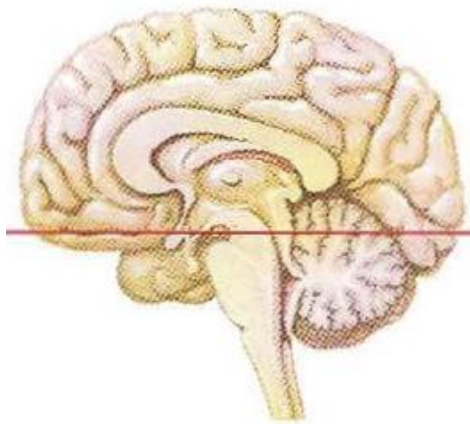
Level of section
(rostral pons)



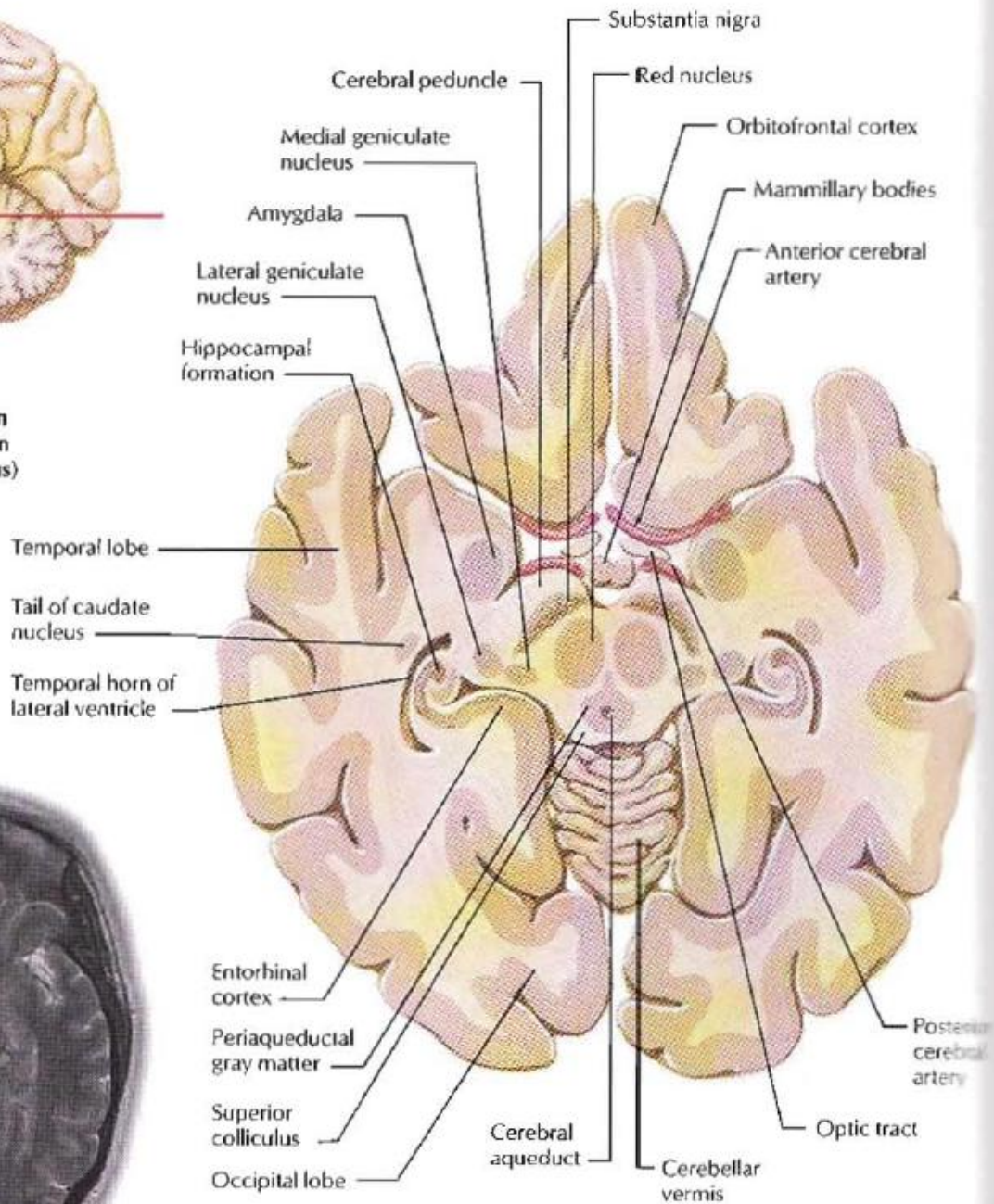


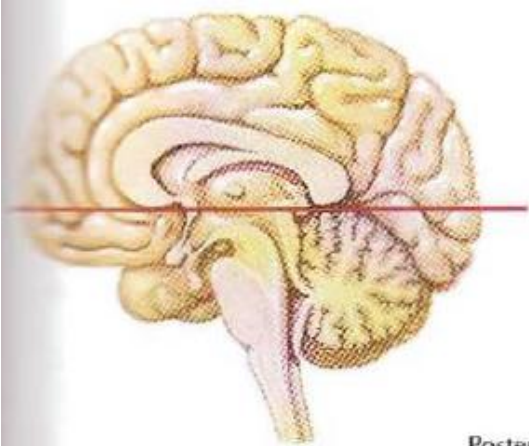
Level of section (mid brain)



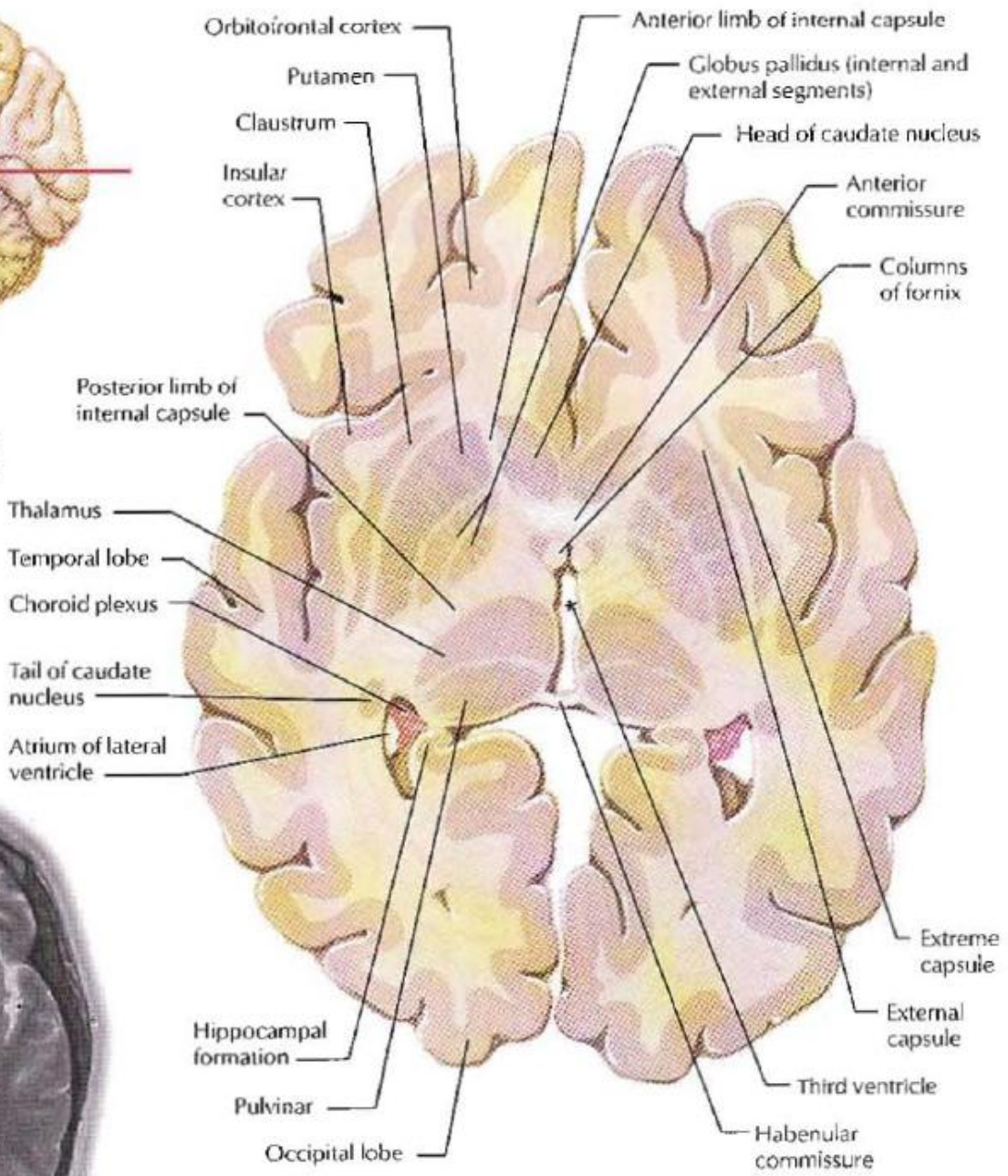


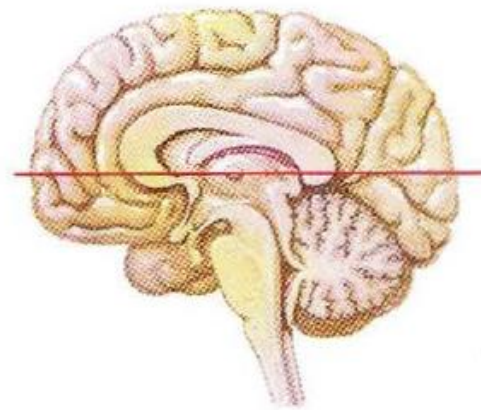
Level of section
(rostral mid brain
and hypothalamus)



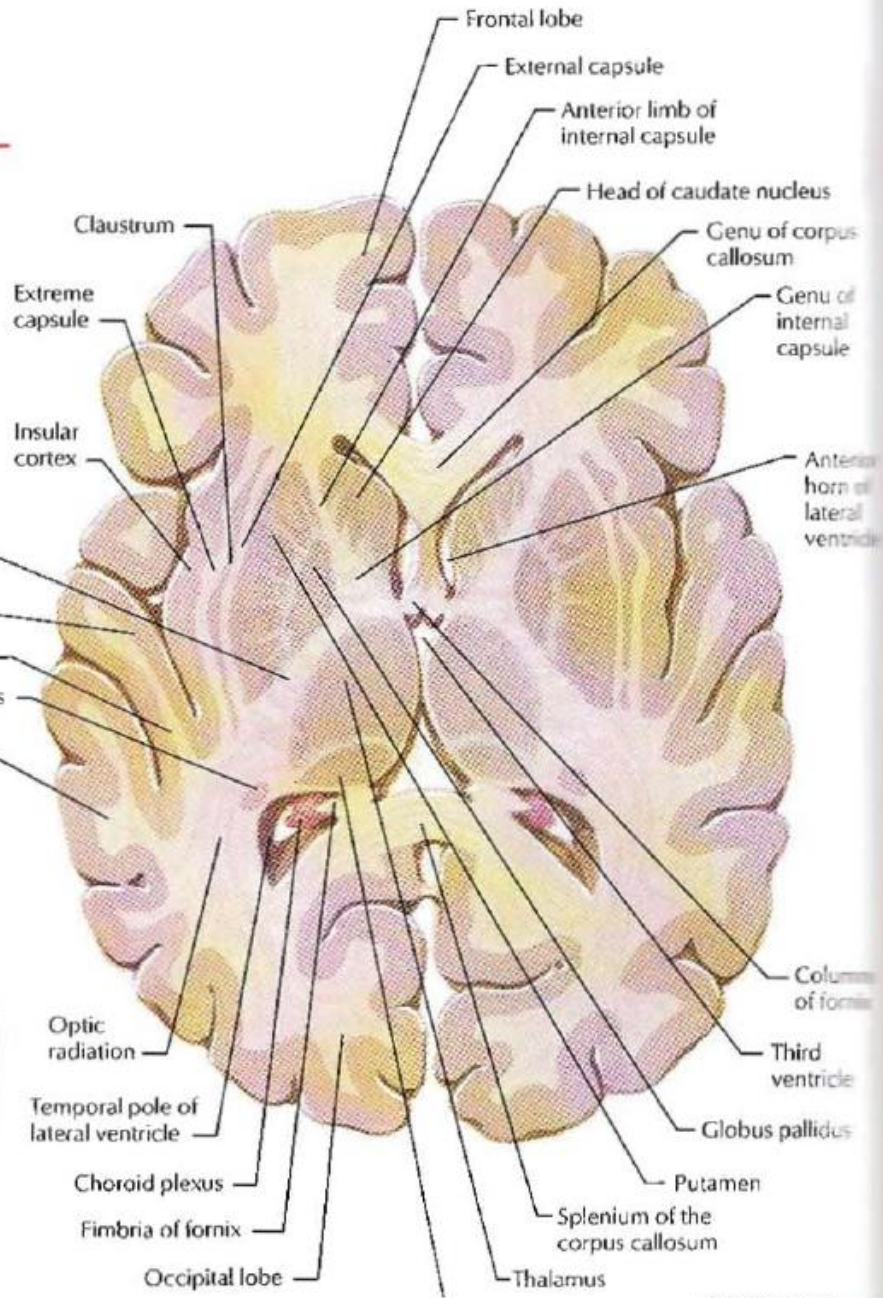


Level of section
(anterior commissure
and caudal thalamus)



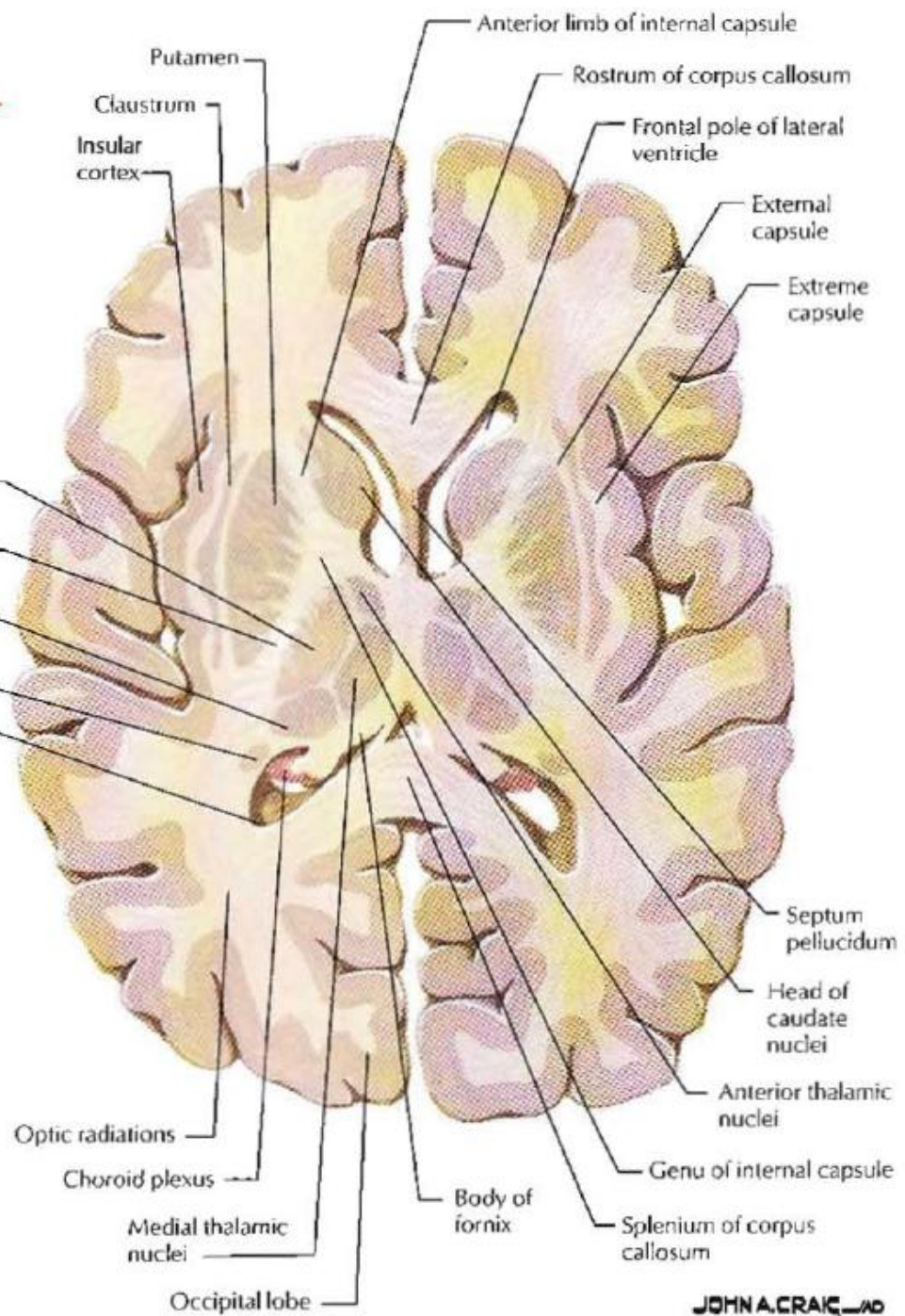


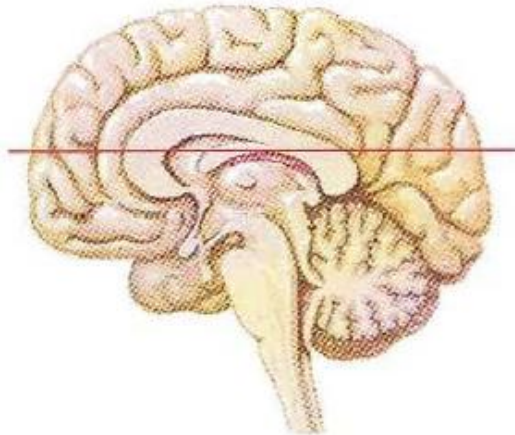
**Level of section
(head of caudate
and mid thalamus)**



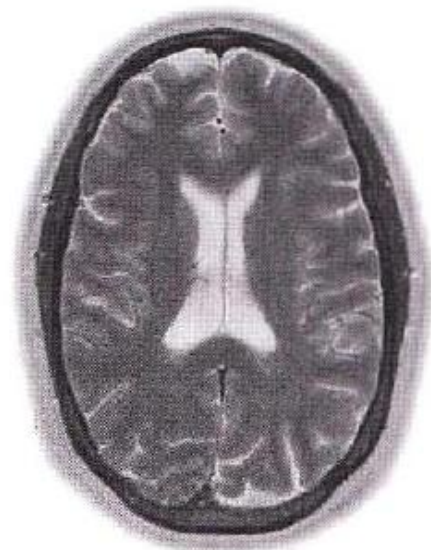


Level of section
(basal ganglia and internal capsule)





Level of section
(dorsal caudate, splenium and genu
of corpus callosum)



Insular cortex

Parietal lobe

Body of caudate
nucleus

Body of lateral
ventricle

Occipital
lobe

Splenium
of corpus
callosum

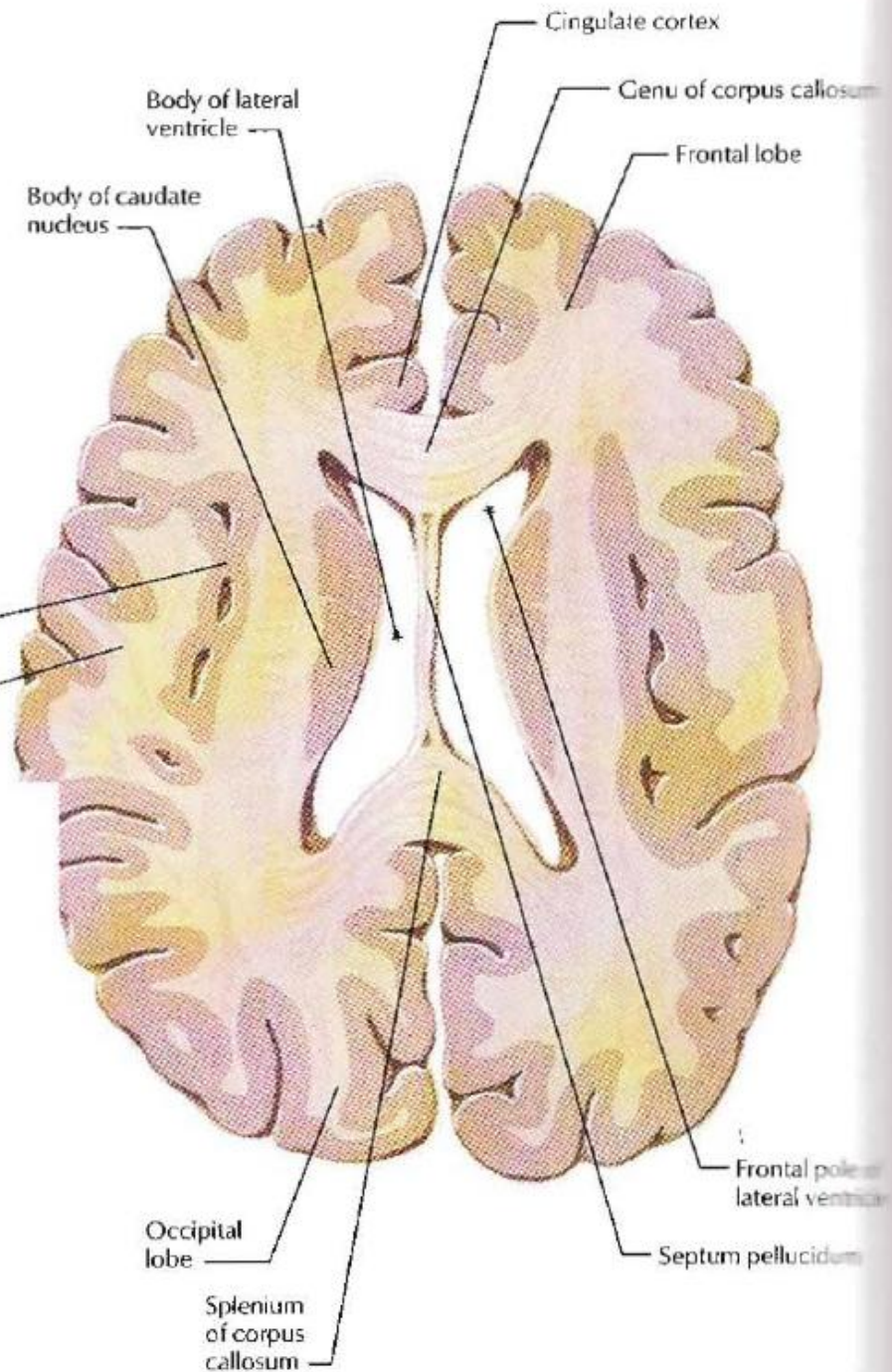
Cingulate cortex

Genu of corpus callosum

Frontal lobe

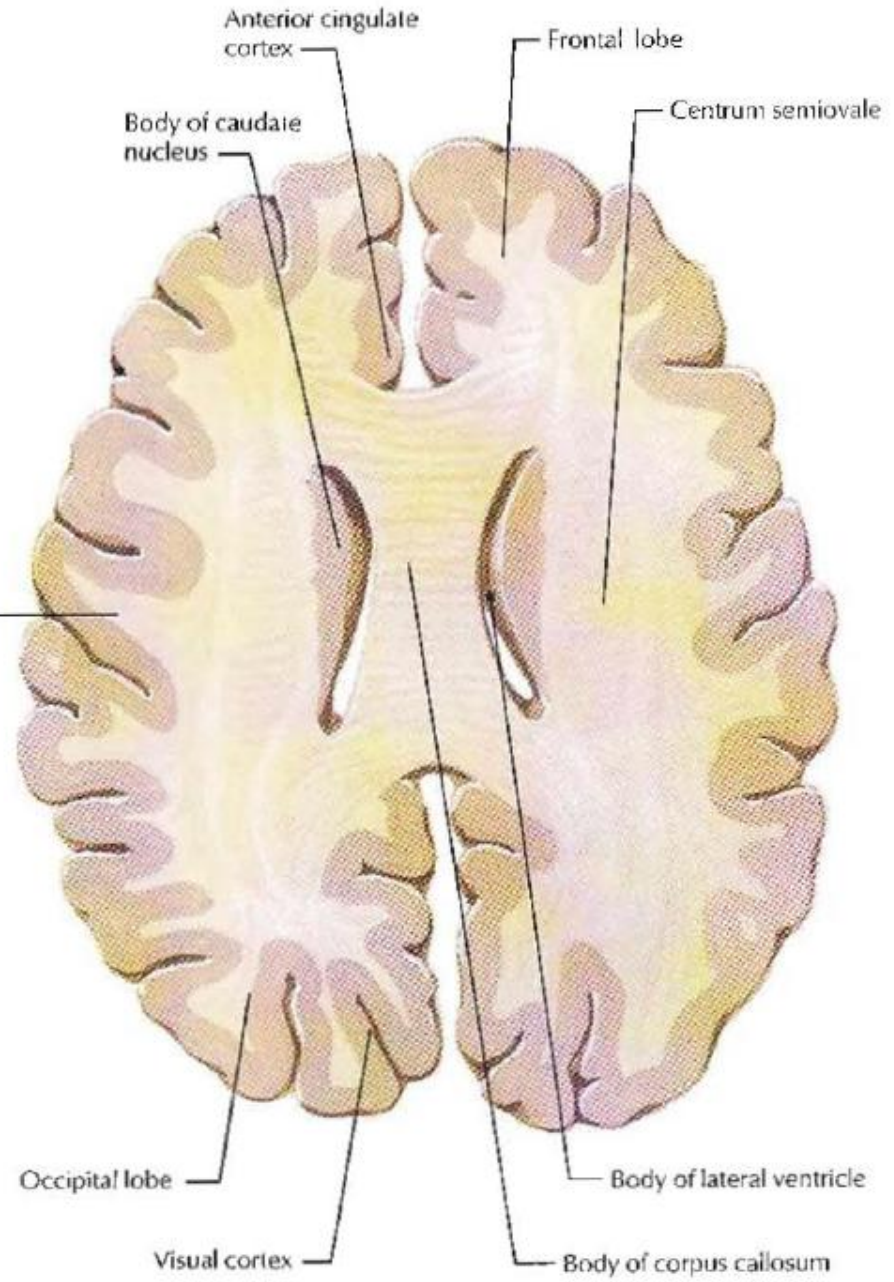
Frontal pole
lateral ventricle

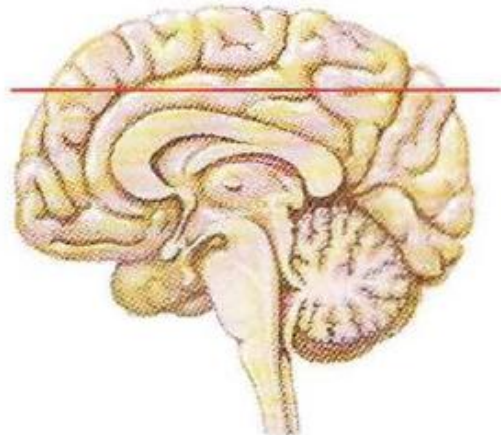
Septum pellucidum



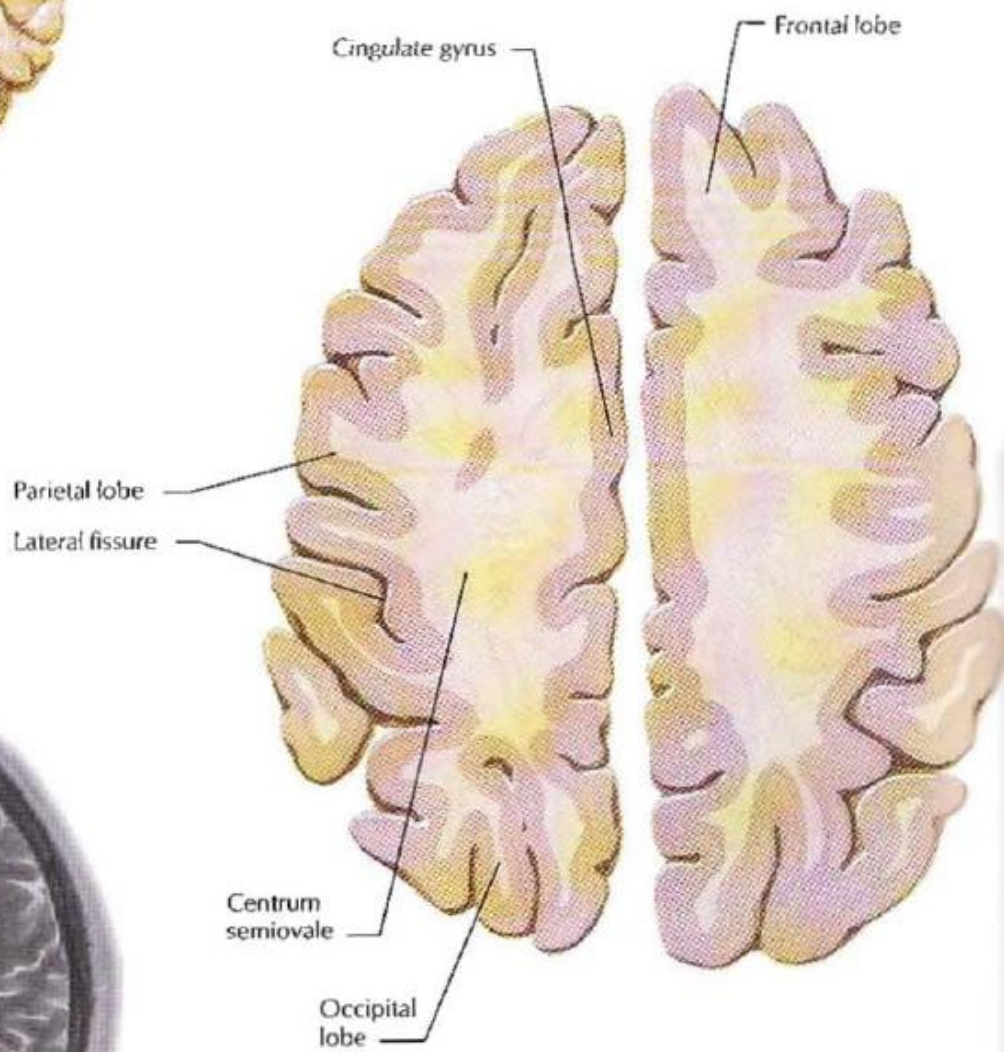


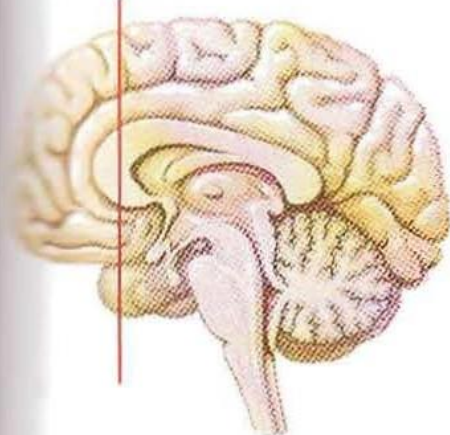
Level of section
(body of corpus callosum)



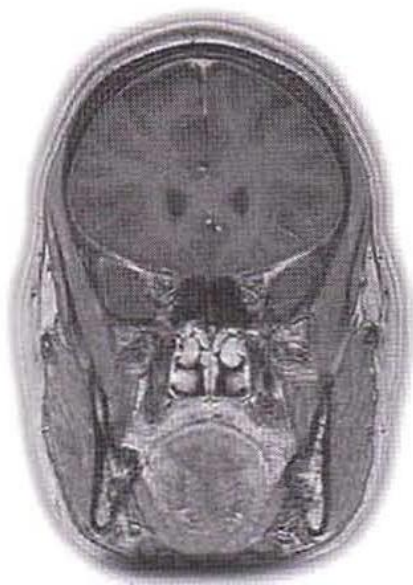
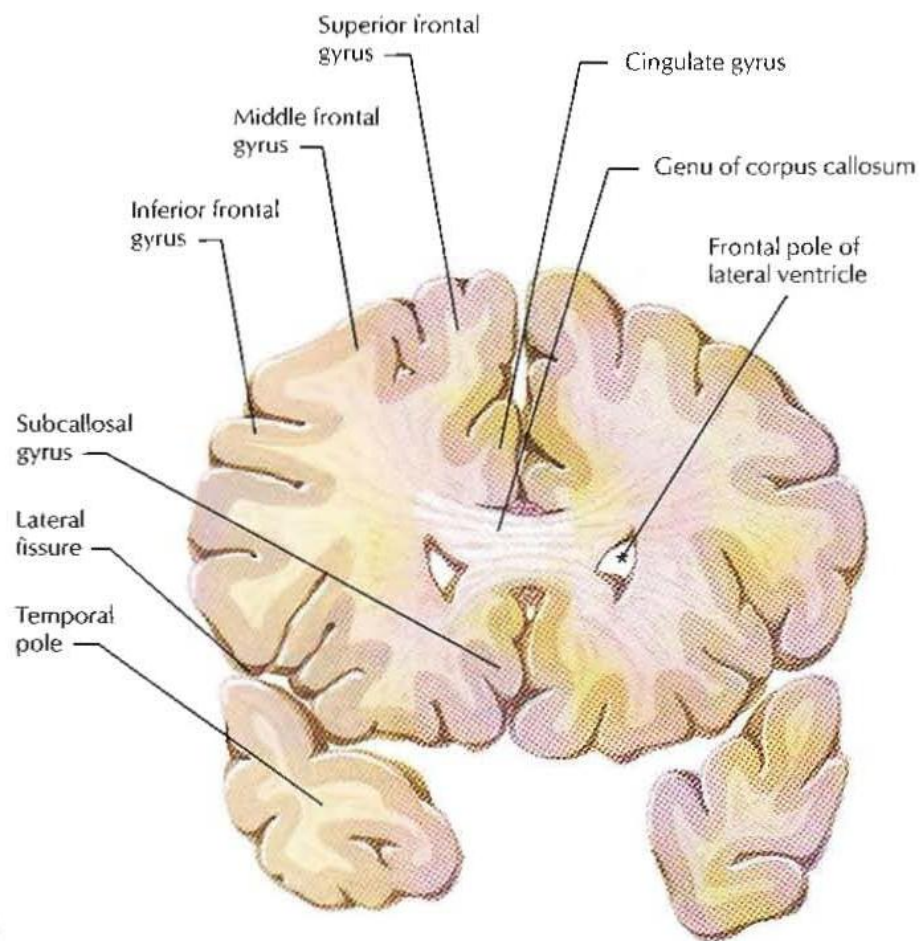


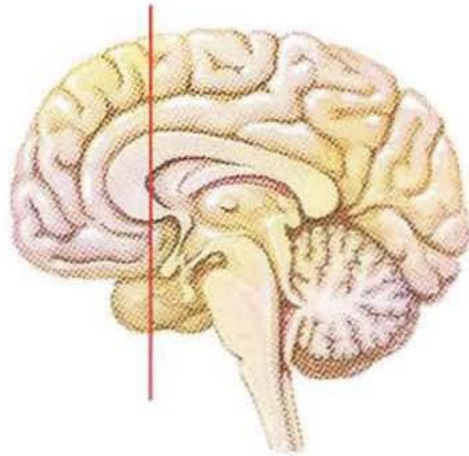
Level of section
(centrum semiovale)



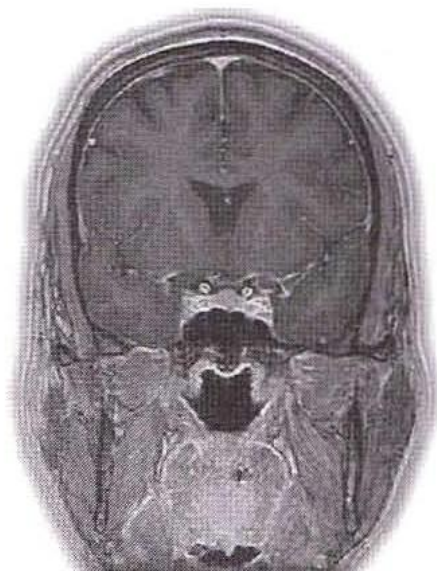
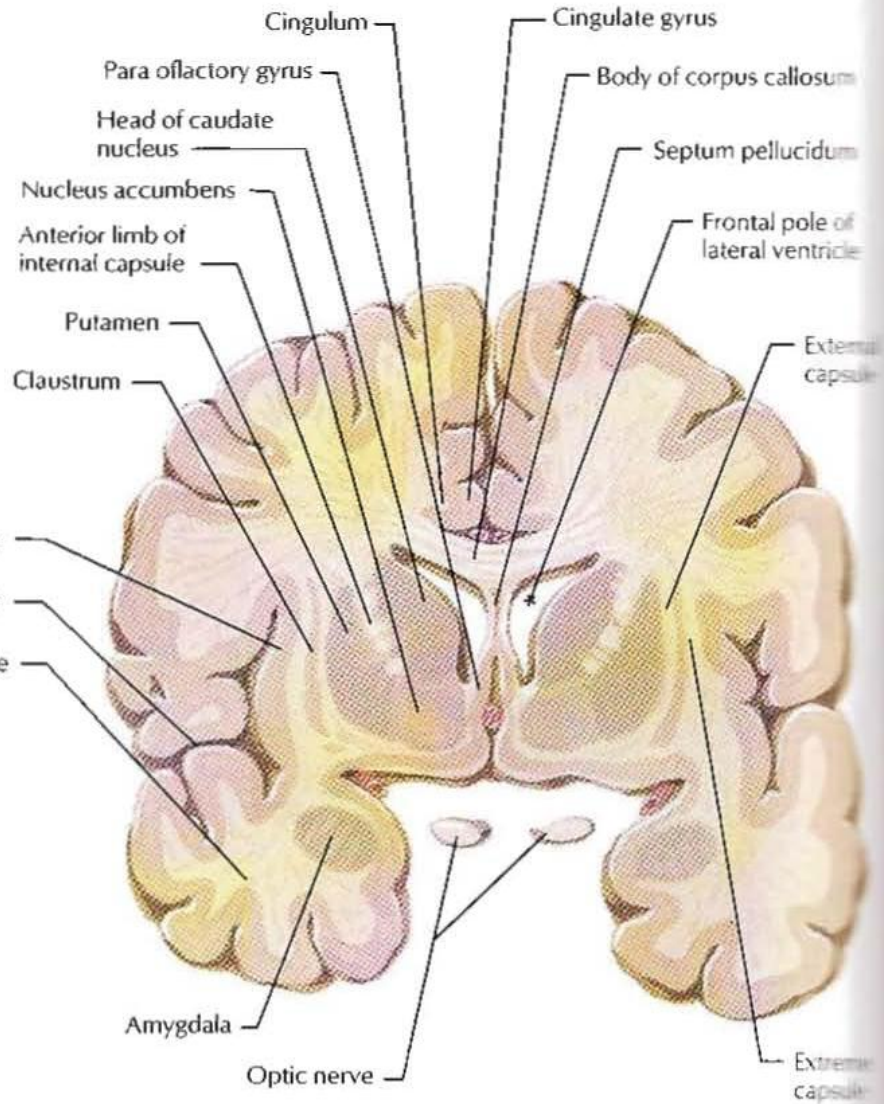


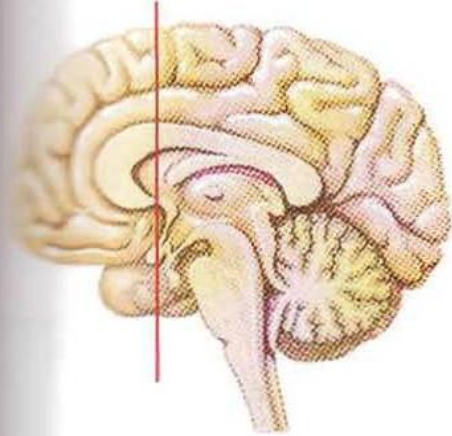
Level of section
(genu of corpus callosum)



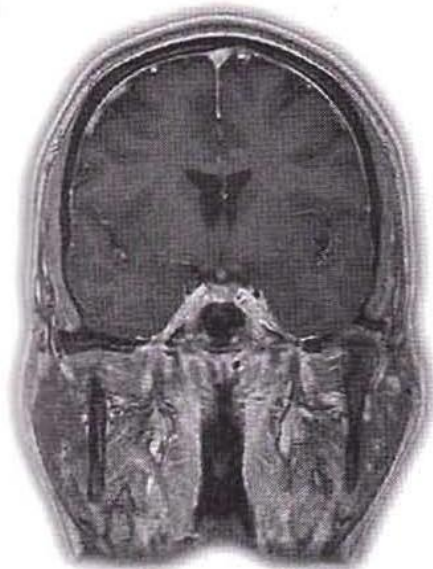
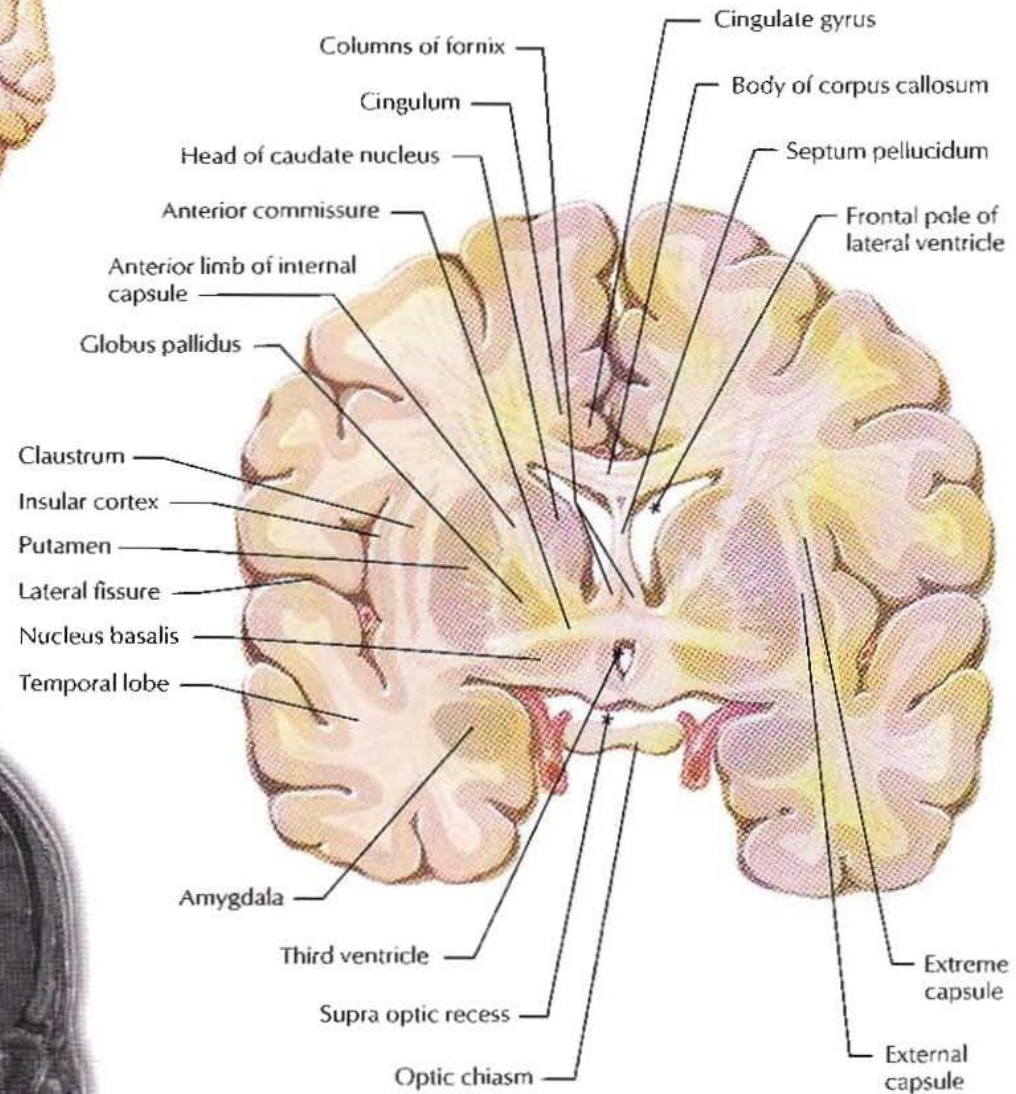


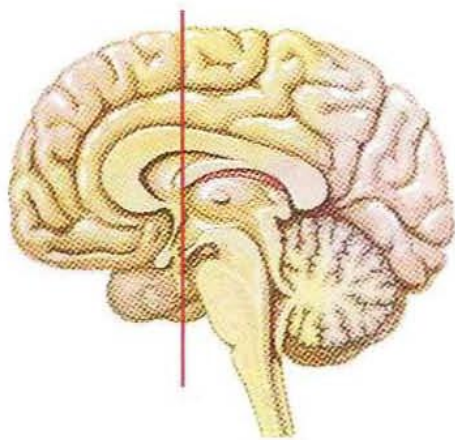
Level of section
(head of caudate nucleus/
nucleus accumbens)



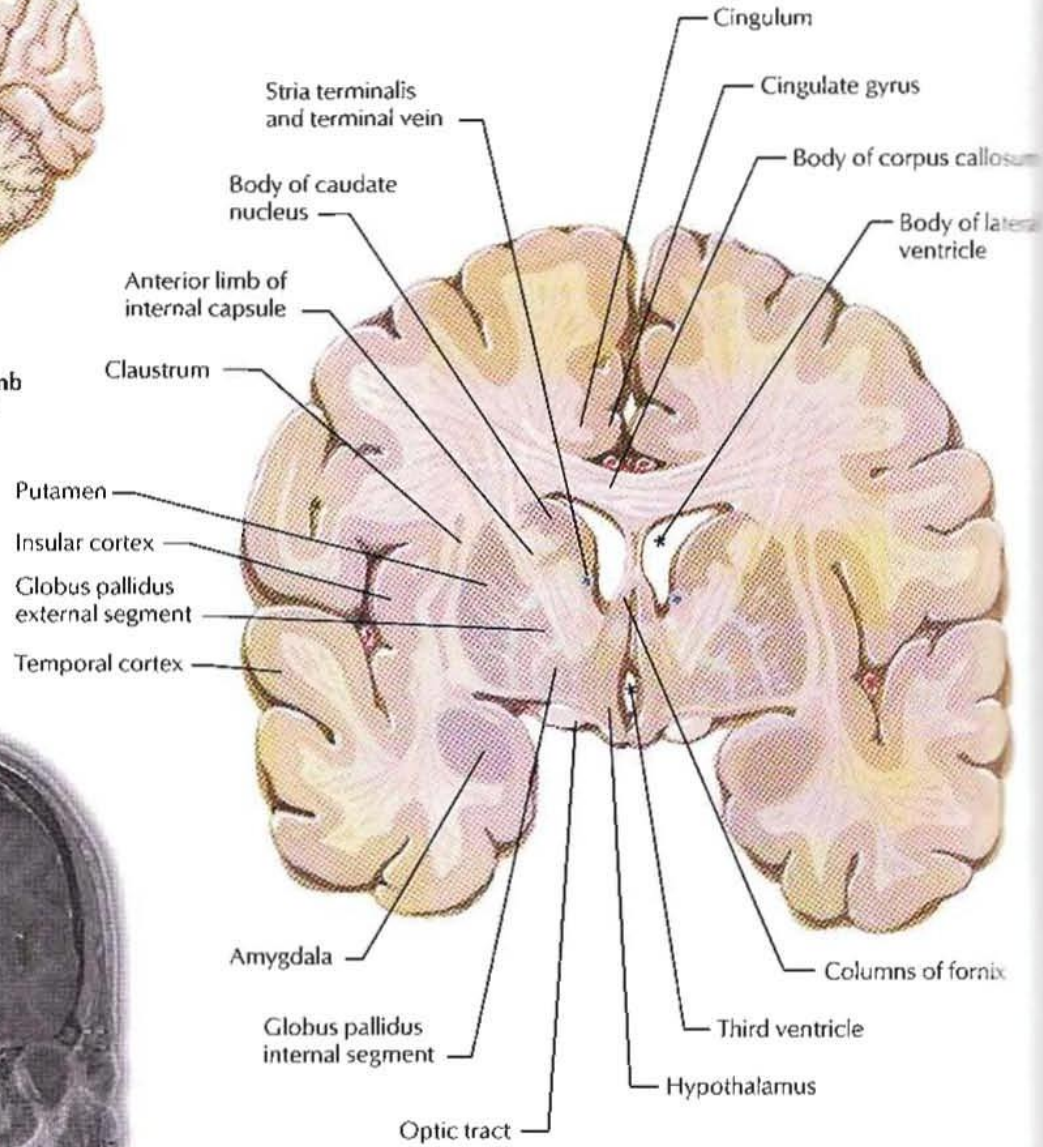
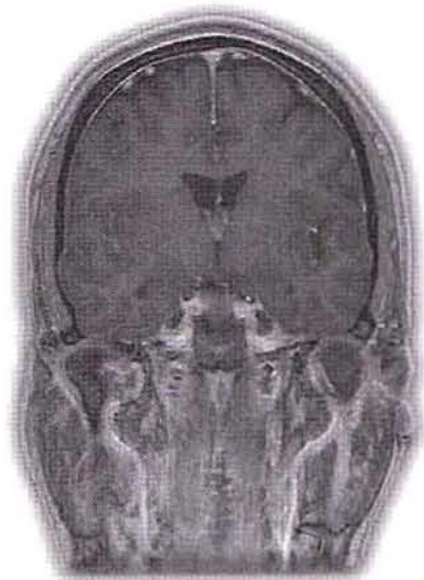


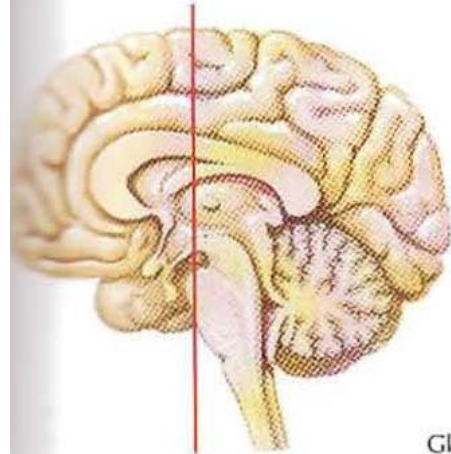
Level of section
(anterior commissure/
columns of fornix)



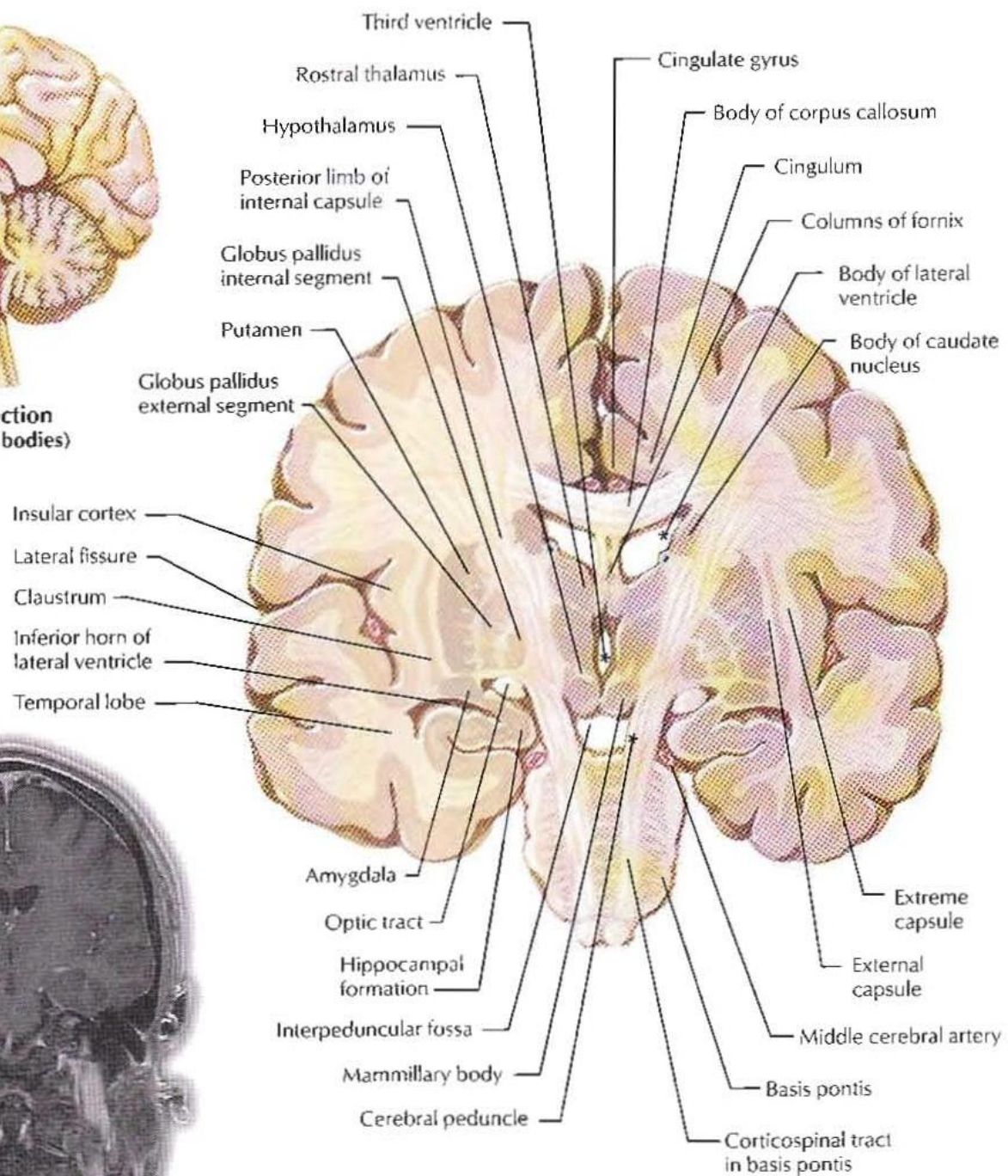
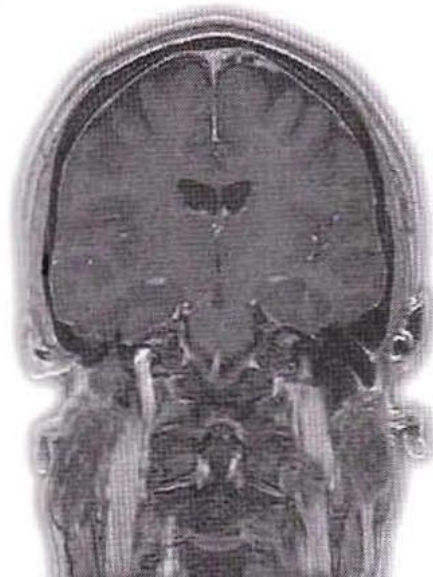


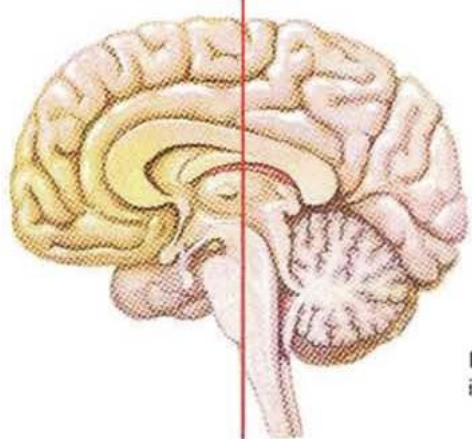
Level of section
(amygdala, anterior limb
of internal capsule)



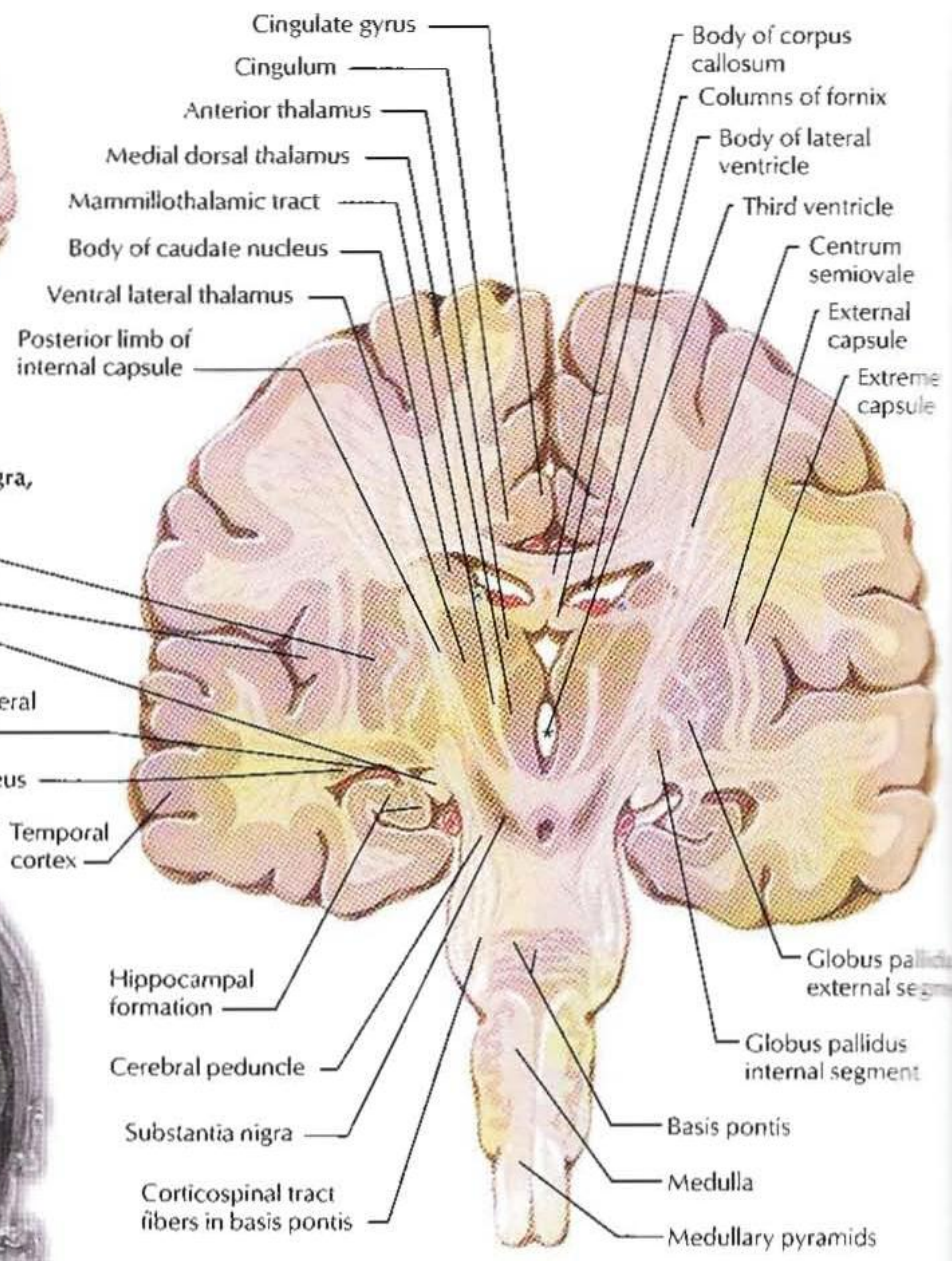
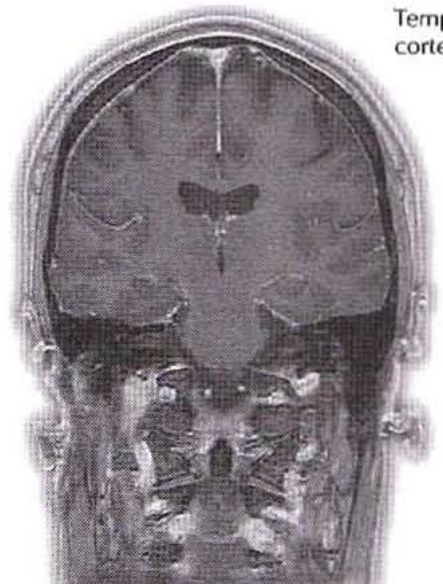


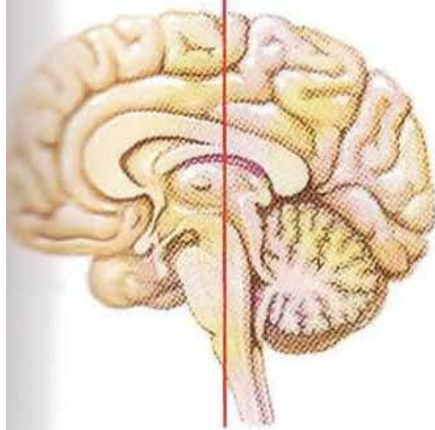
Level of section
(mammillary bodies)



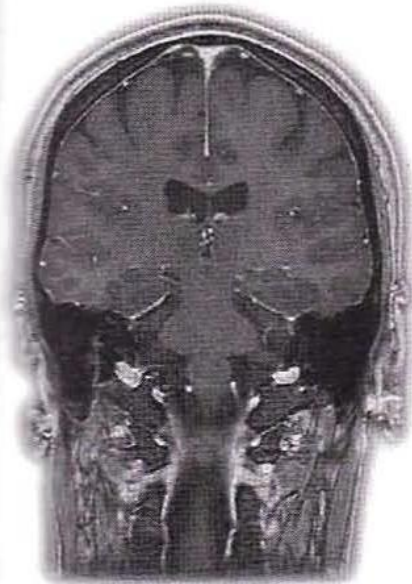
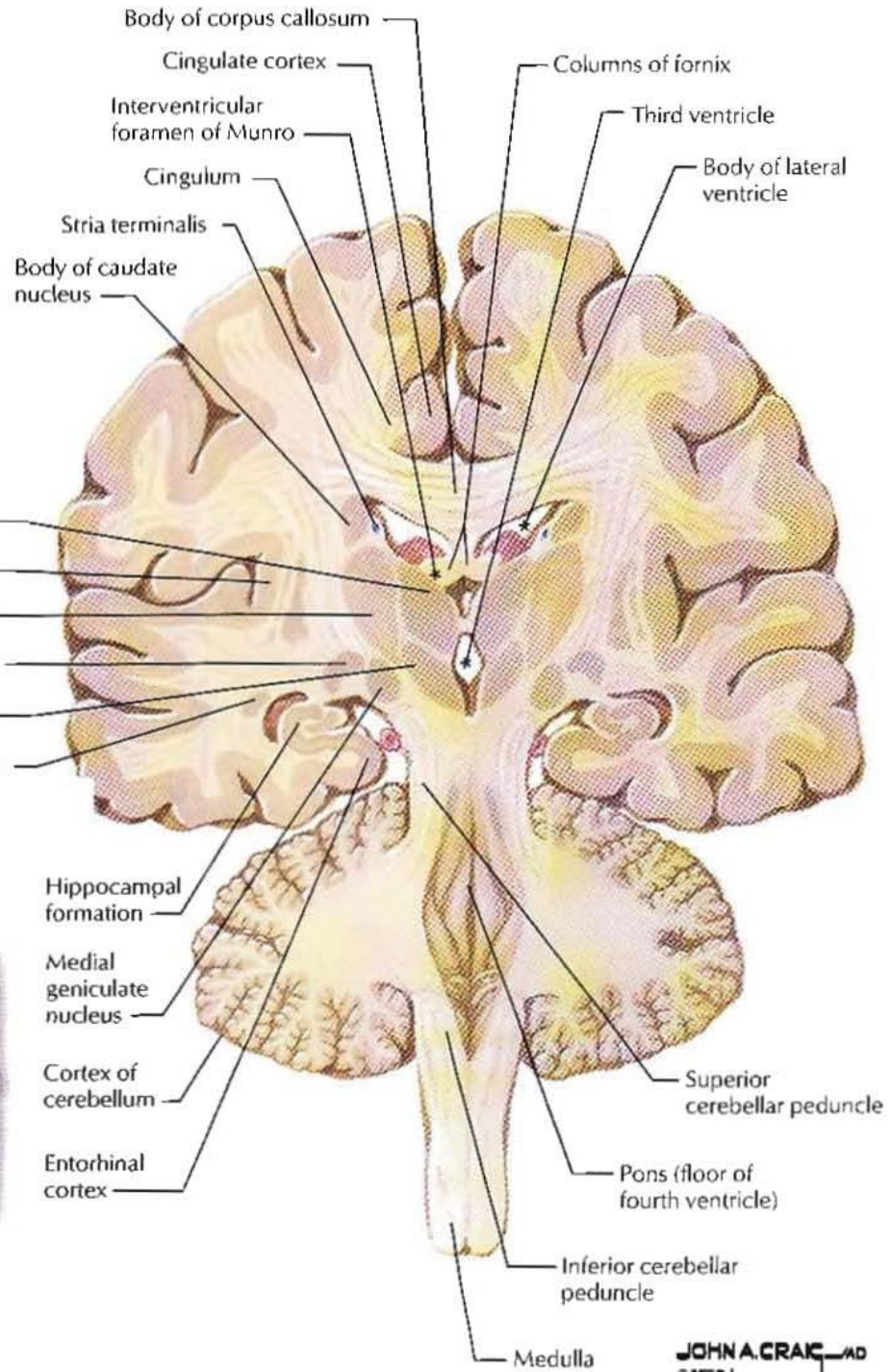


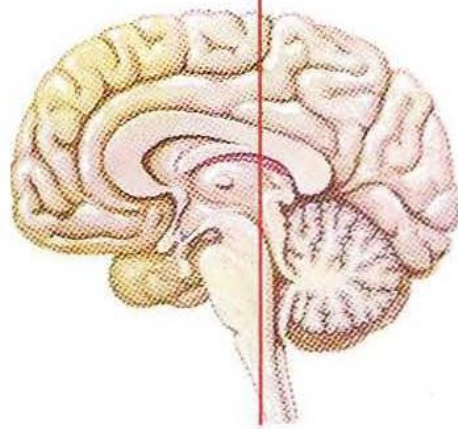
Level of Section
(mammillothalamic tract/substantia nigra, rostral hippocampus)



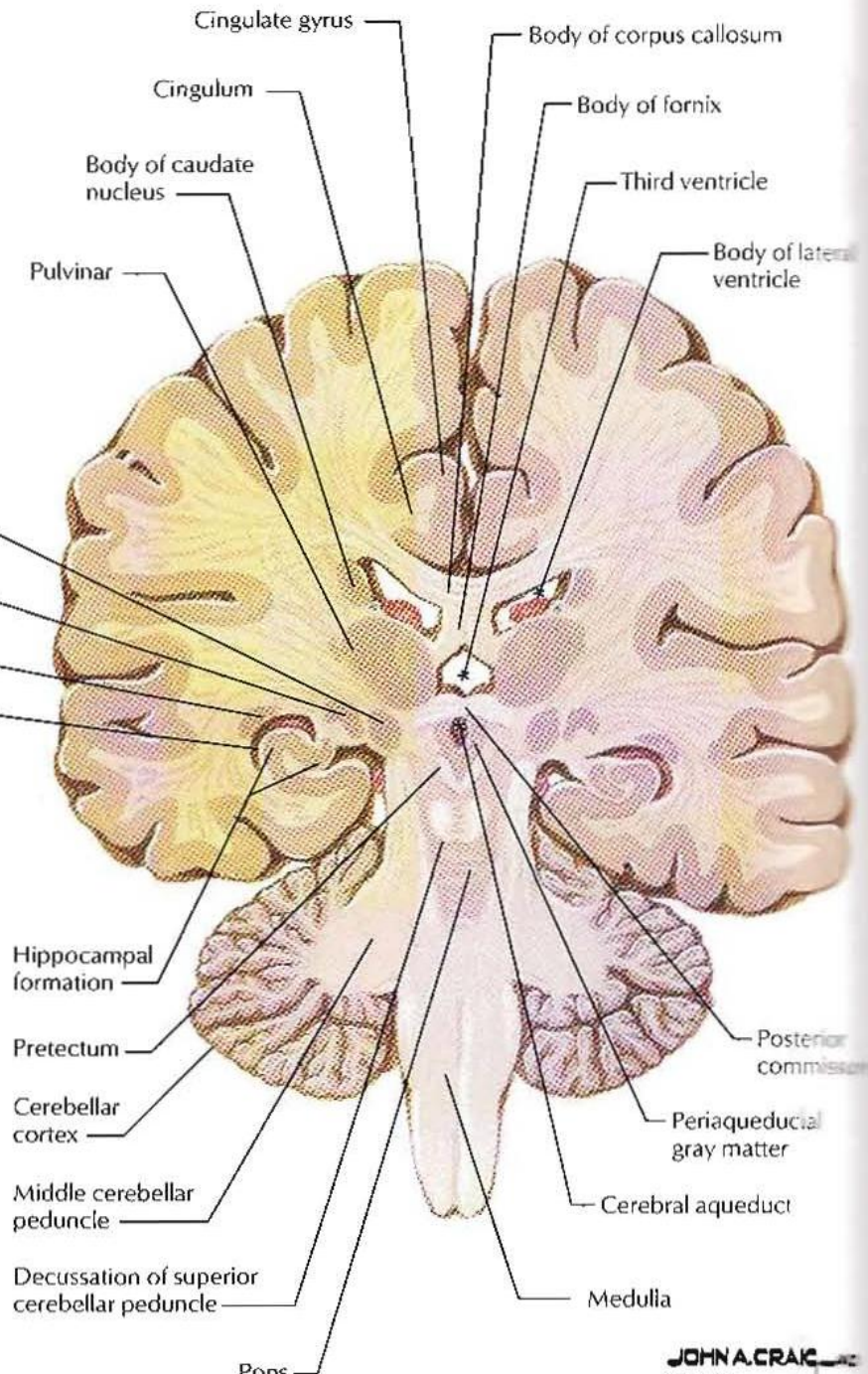
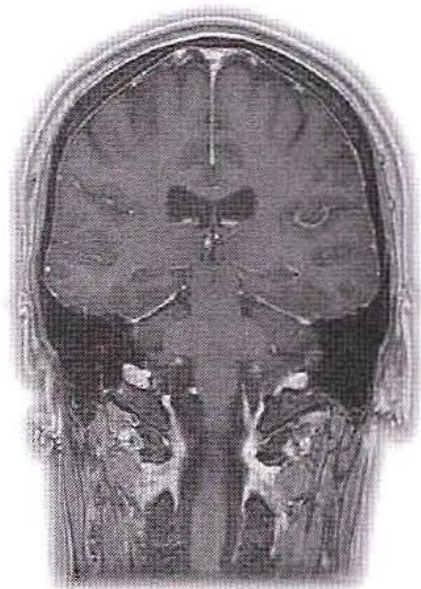


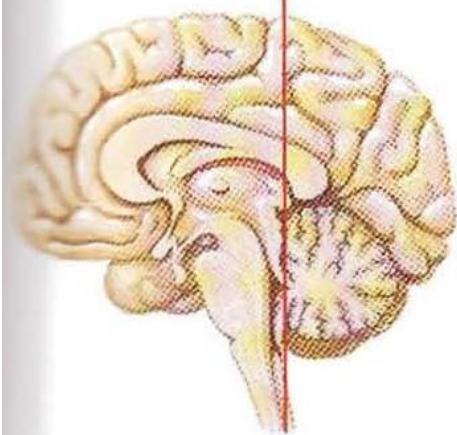
**Level of section
(midthalamus)**





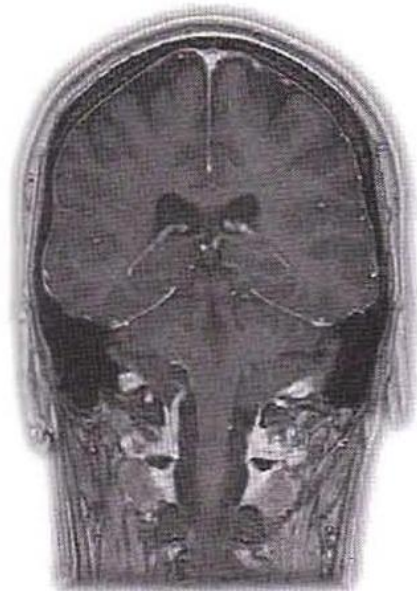
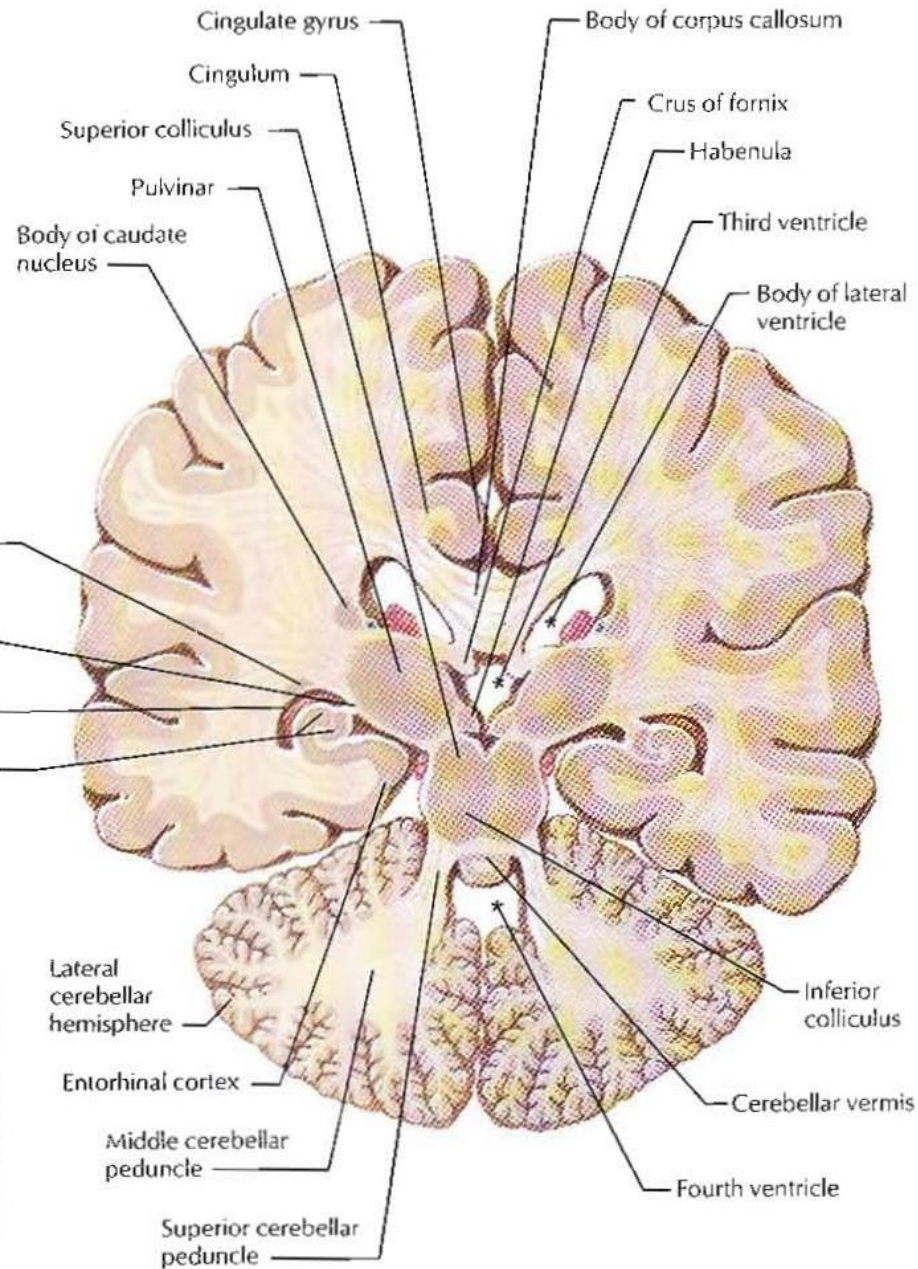
Level of section
(geniculate nuclei)

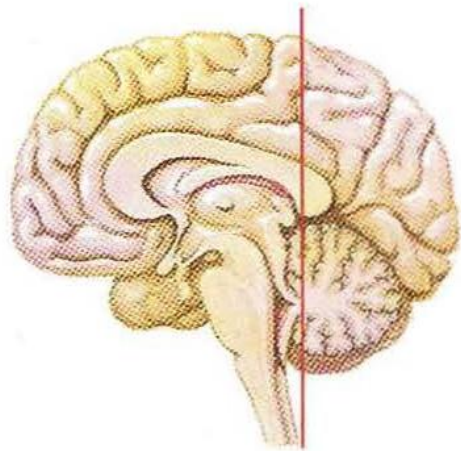




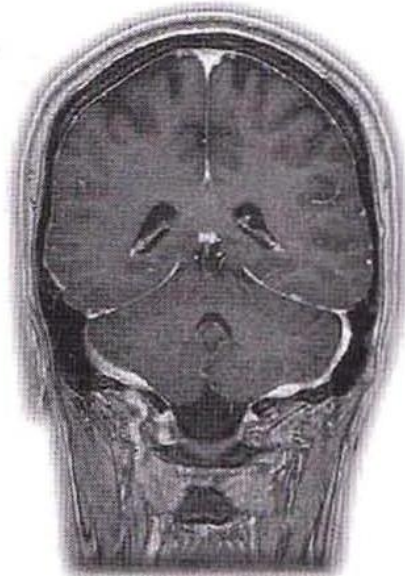
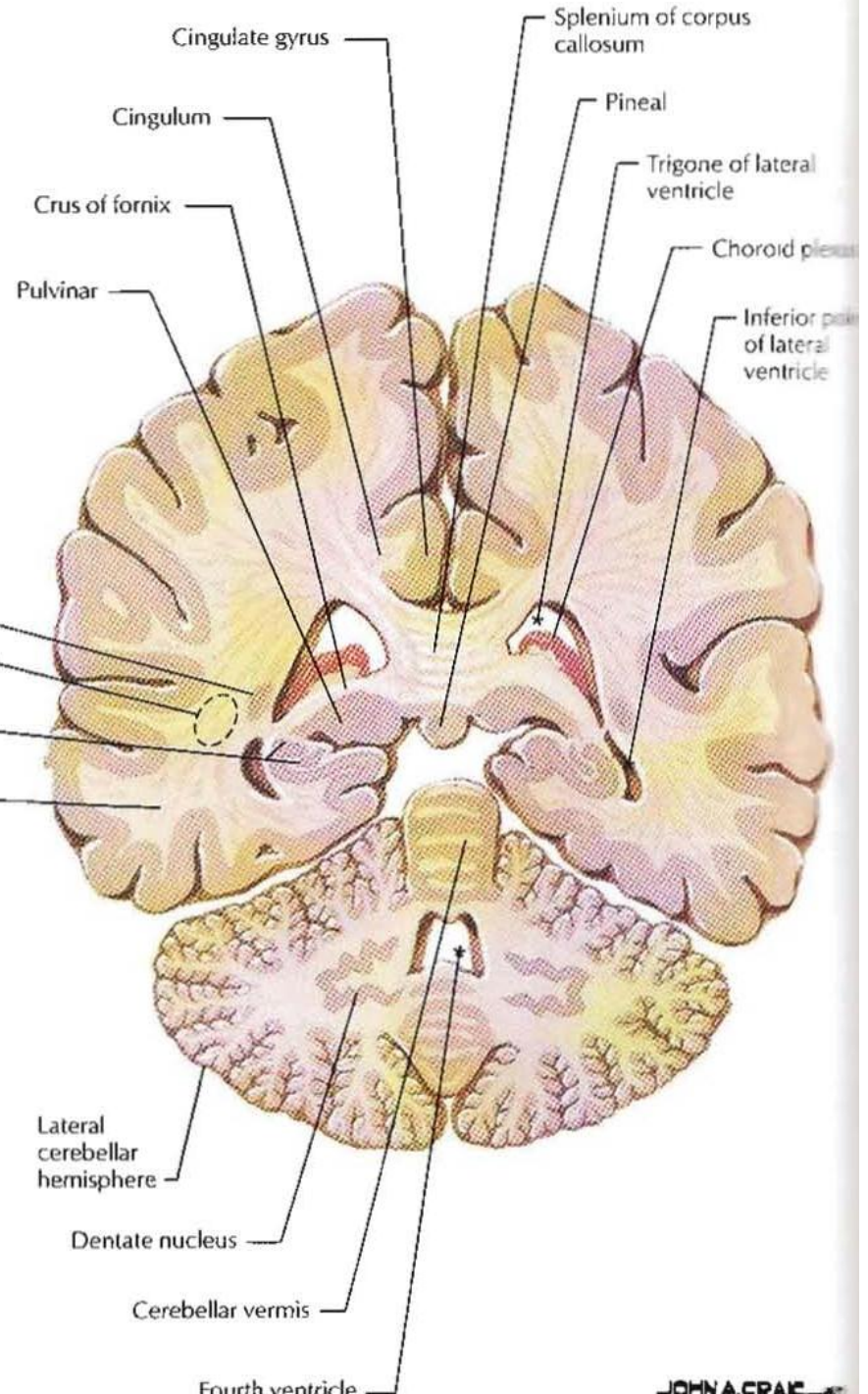
Level of section

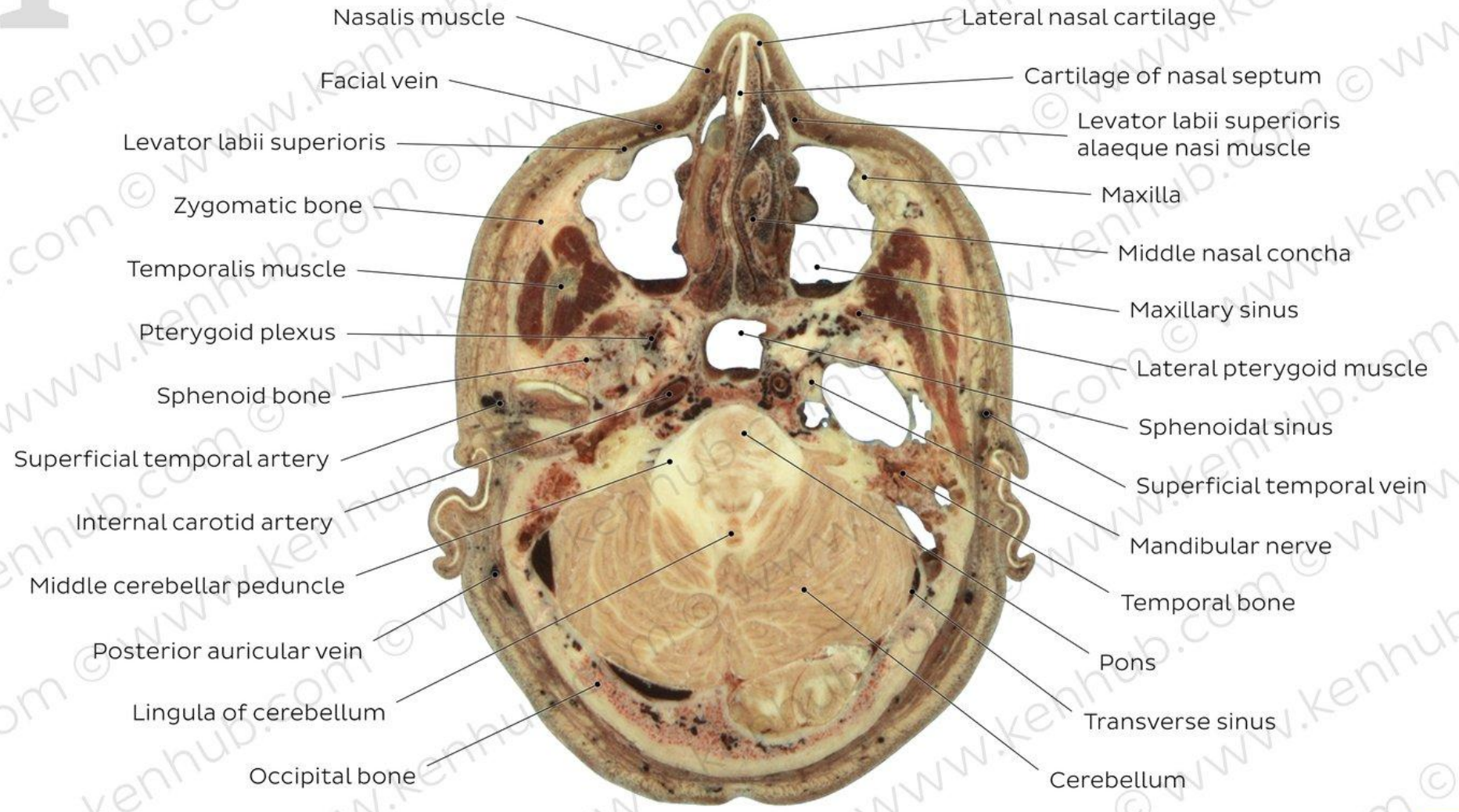
(caudal pulvinar and superior colliculus)

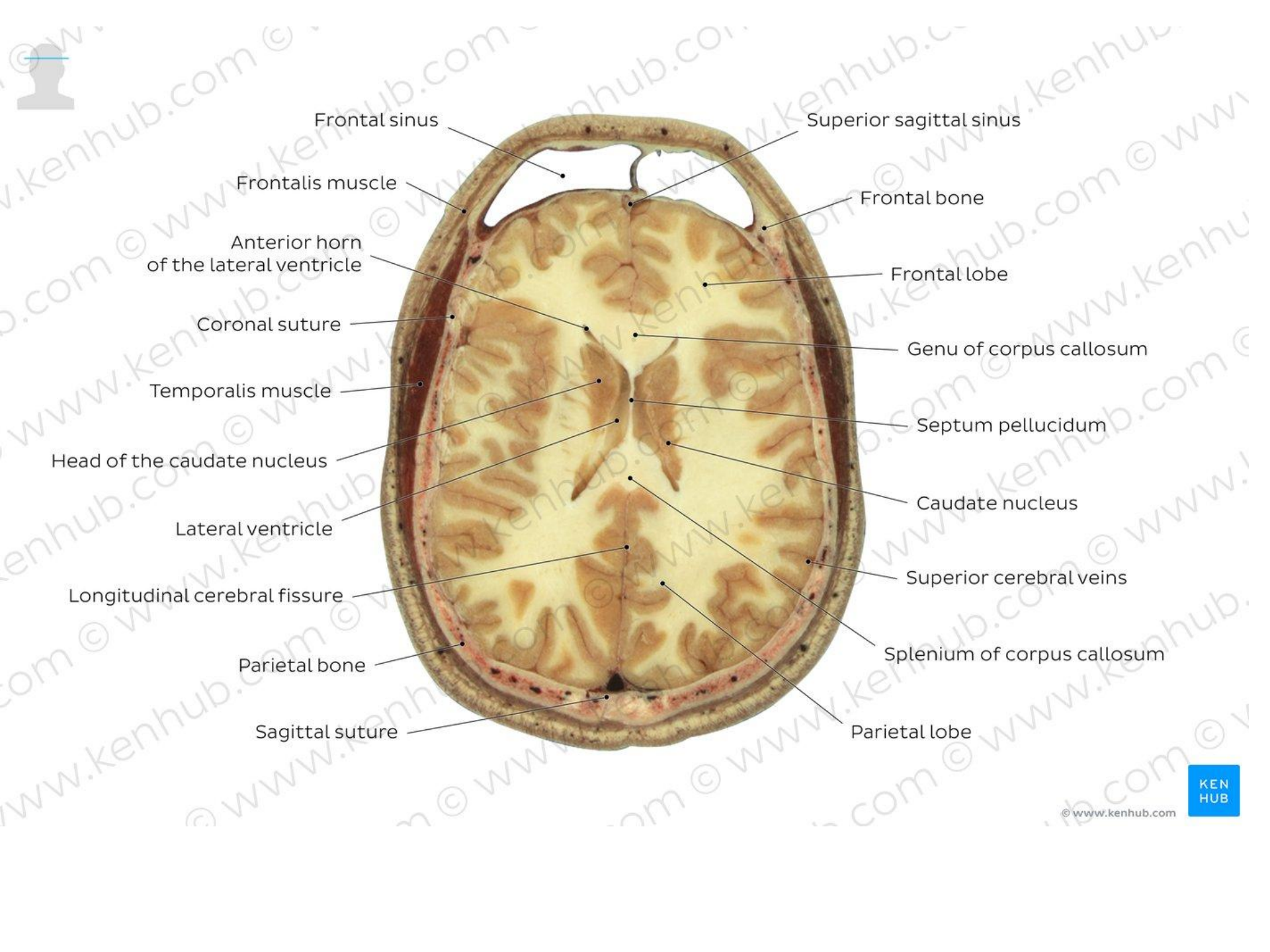




**Level of section
(splenium of corpus callosum)**







Frontal sinus

Frontalis muscle

Anterior horn
of the lateral ventricle

Coronal suture

Temporalis muscle

Head of the caudate nucleus

Lateral ventricle

Longitudinal cerebral fissure

Parietal bone

Sagittal suture

Superior sagittal sinus

Frontal bone

Frontal lobe

Genu of corpus callosum

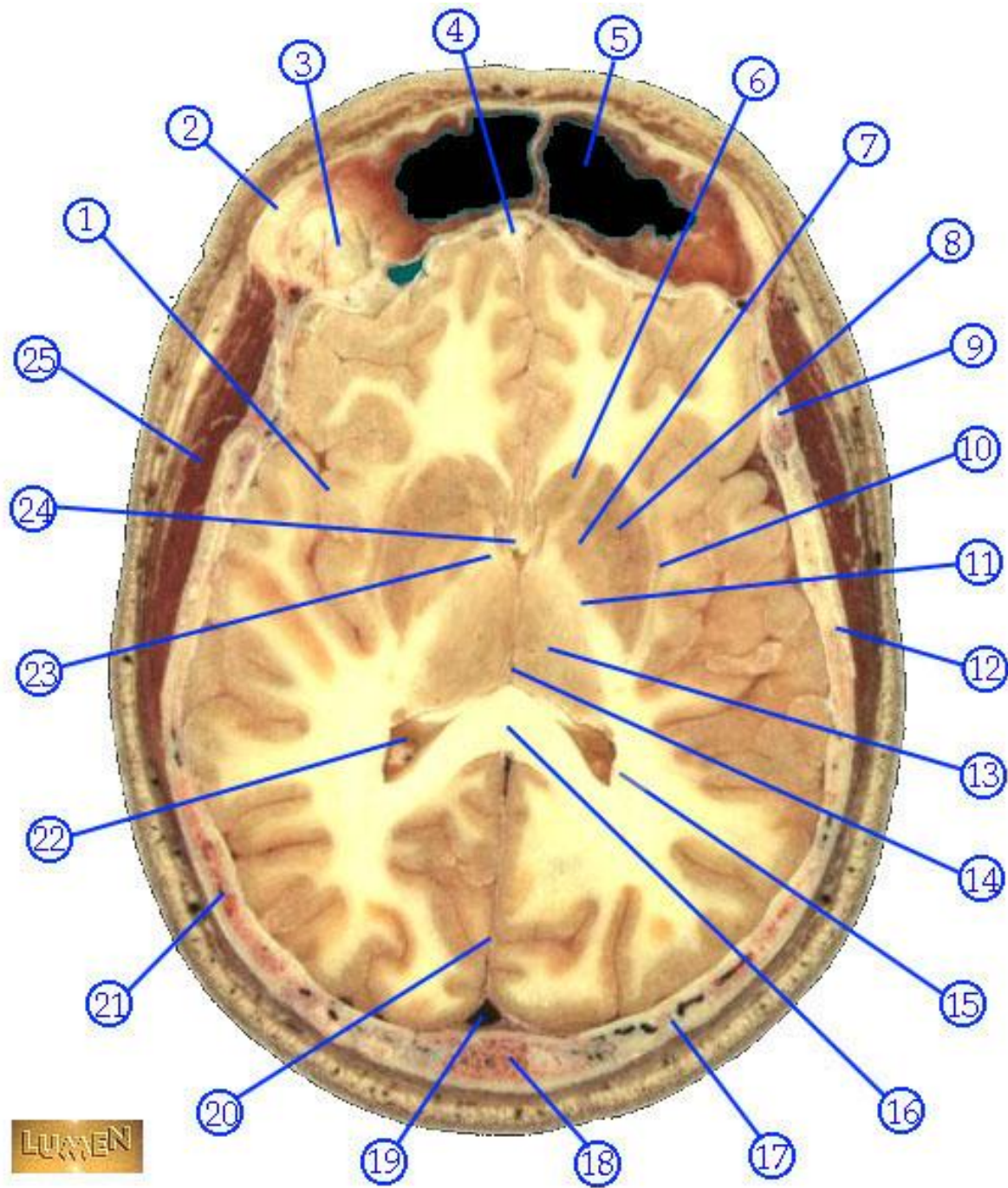
Septum pellucidum

Caudate nucleus

Superior cerebral veins

Splenium of corpus callosum

Parietal lobe



LUMEN