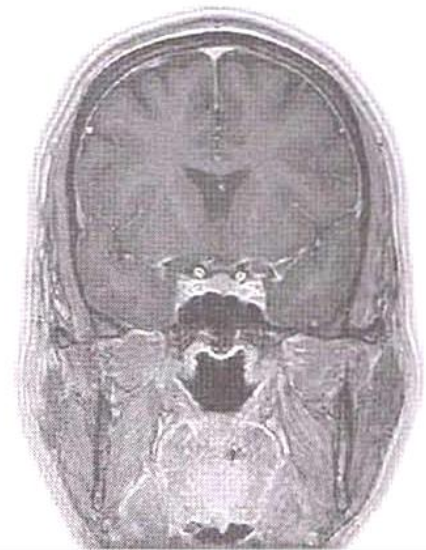
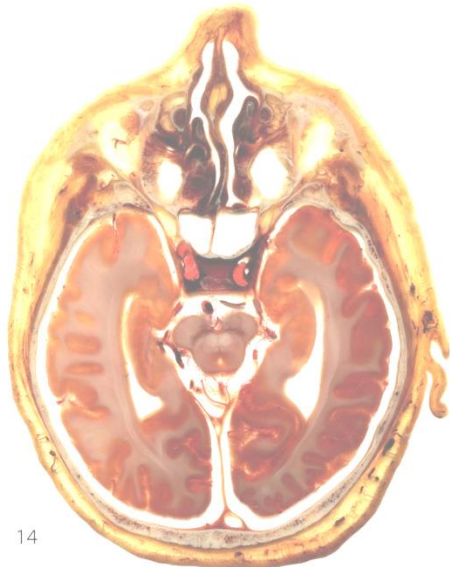


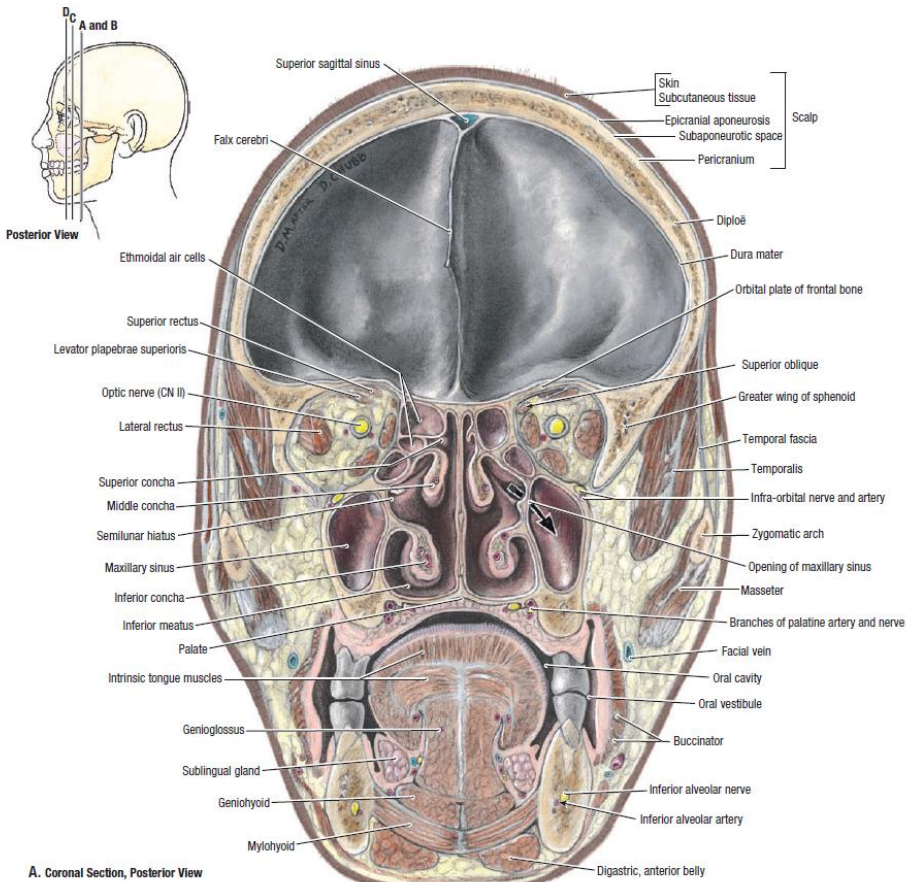


ANATOMIE SECȚIONALĂ a Capului

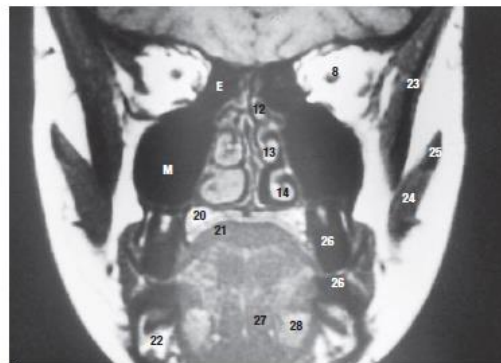
Sectional Anatomy of the Head



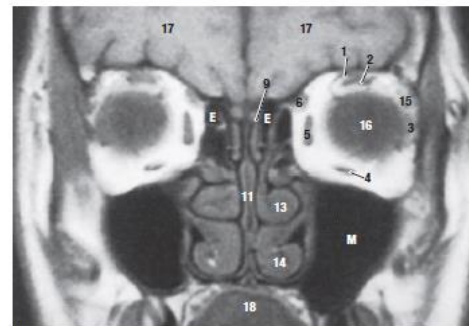
Lecturer Lilian Globa



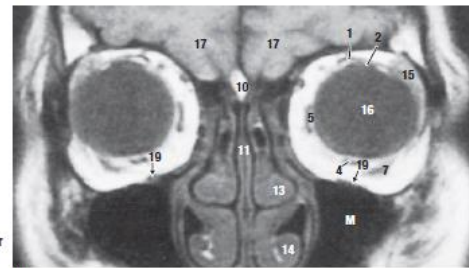
A. Coronal Section, Posterior View



B



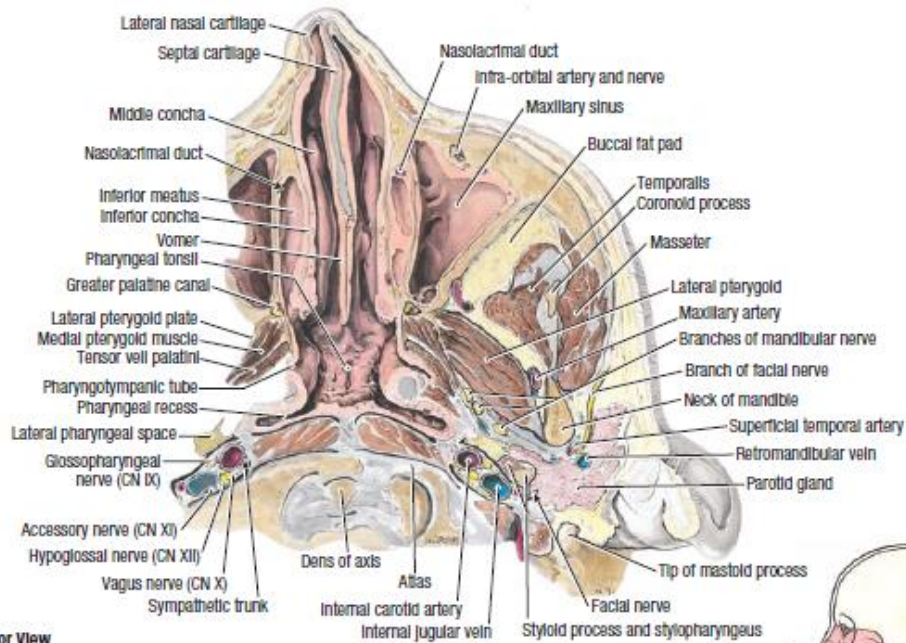
C



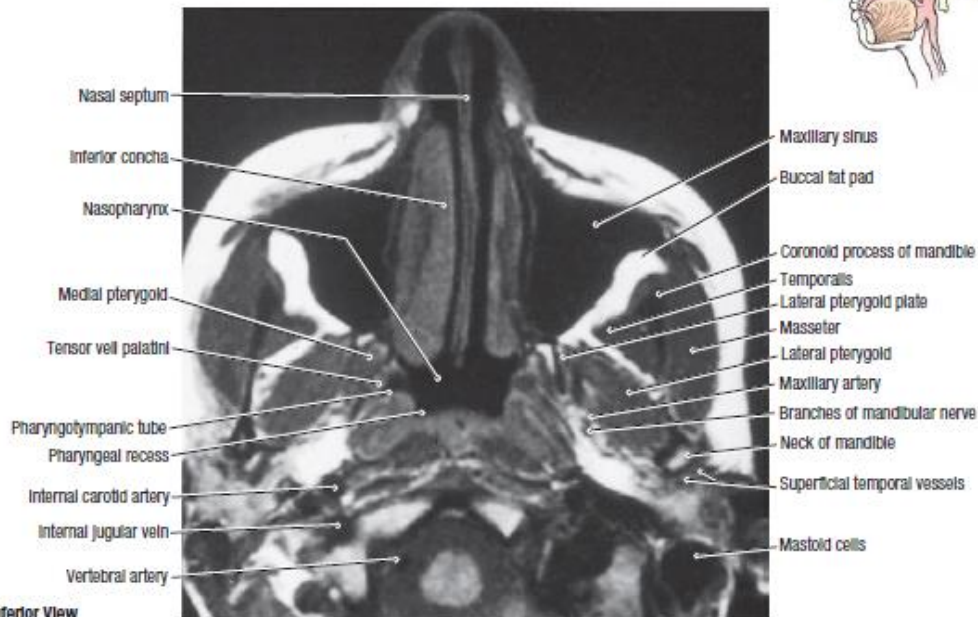
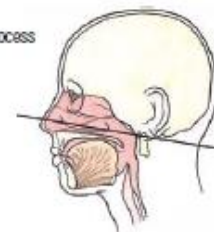
Posterior Views

D

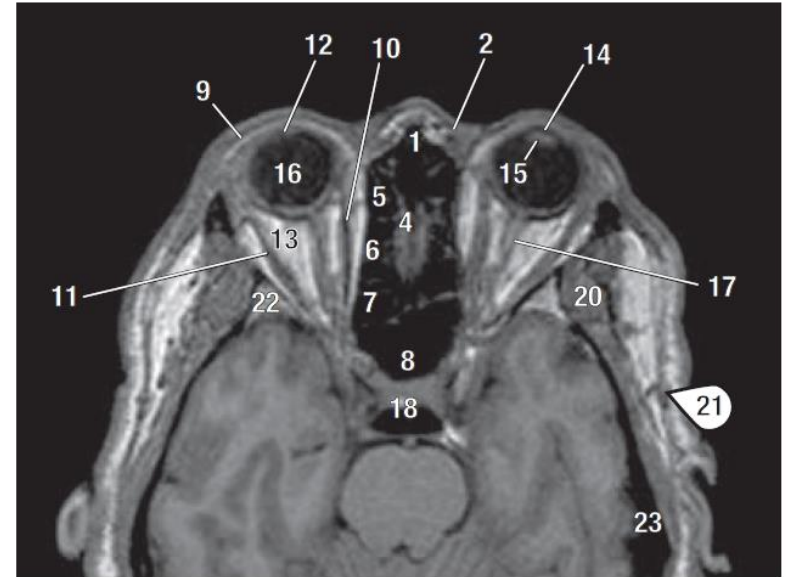
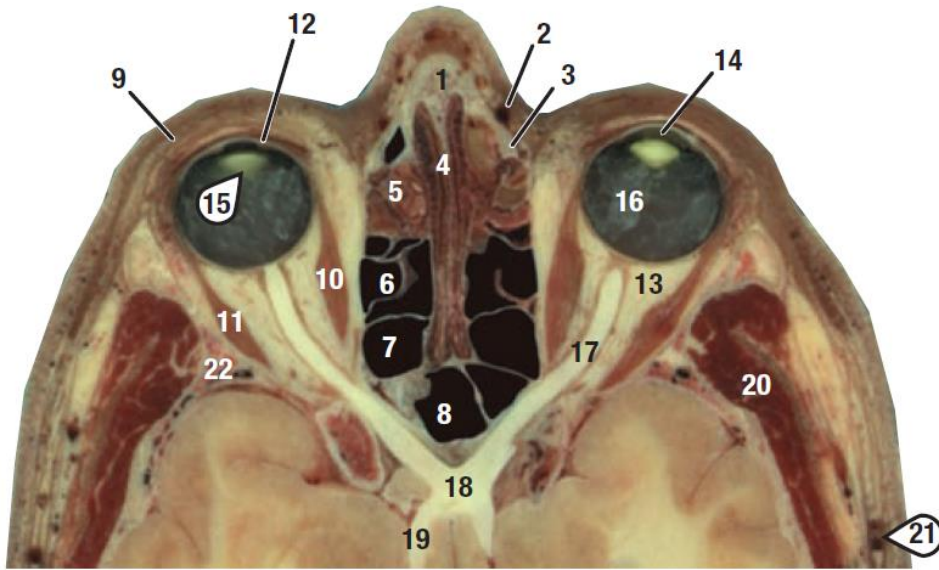
- 1 Levator palpebrae superioris
- 2 Superior rectus
- 3 Lateral rectus
- 4 Inferior rectus
- 5 Medial rectus
- 6 Superior oblique
- 7 Inferior oblique
- 8 Optic nerve
- 9 Olfactory bulb
- 10 Crista galli
- 11 Nasal septum
- 12 Superior concha
- 13 Middle concha
- 14 Inferior concha
- 15 Lacrimal gland
- 16 Eyeball
- 17 Frontal lobe
- 18 Tongue
- 19 Infra-orbital vessels and nerve
- 20 Hard palate
- 21 Intrinsic muscles of tongue
- 22 Mandible
- 23 Temporalis
- 24 Masseter
- 25 Zygomatic arch
- 26 Molar teeth
- 27 Genioglossus
- 28 Sublingual gland
- M Maxillary sinus
- E Ethmoidal air cell



A. Inferior View



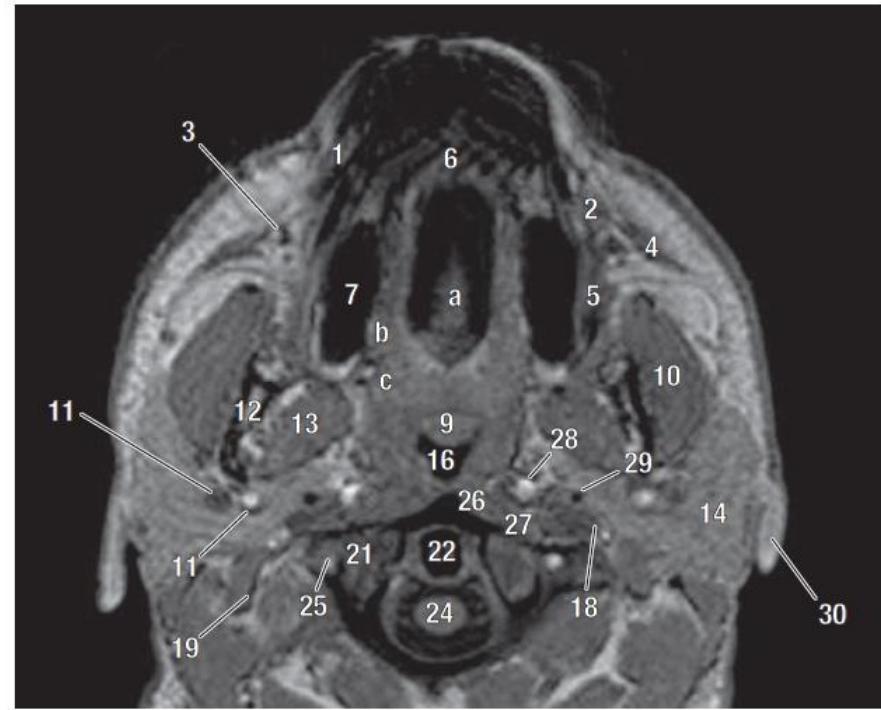
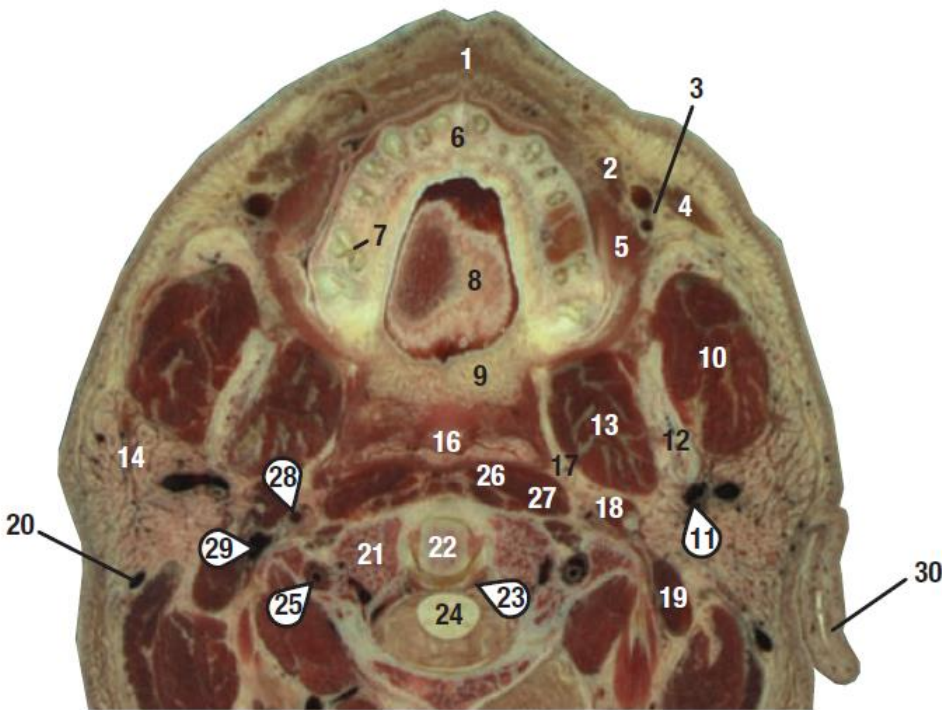
B. Inferior View



A. Transverse Section and Transverse (axial) MRI Scan

Key

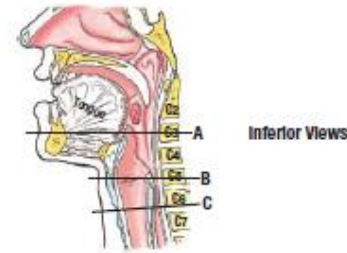
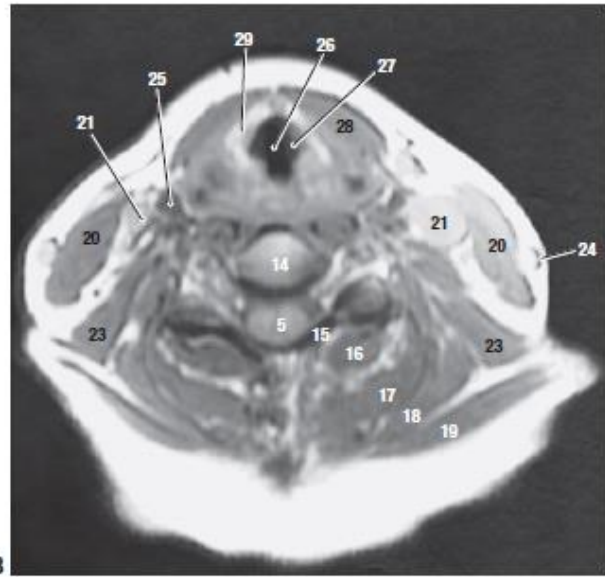
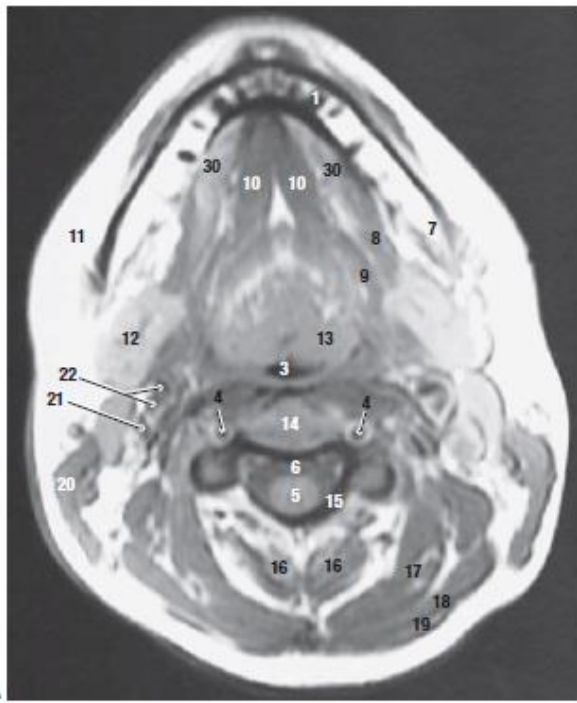
1	Nasal bones	7	Posterior ethmoidal air cell	13	Retrobulbar fat	19	Optic tract
2	Angular artery	8	Sphenoid sinus	14	Anterior chamber	20	Temporalis muscle
3	Frontal process of maxilla	9	Orbicularis oculi muscle	15	Lens	21	Superficial temporal vessels
4	Nasal septum	10	Medial rectus muscle	16	Vitreous body	22	Greater wing of sphenoid
5	Anterior ethmoidal cell	11	Lateral rectus muscle	17	Optic nerve	23	Squamous part of temporal bone
6	Middle ethmoidal cell	12	Cornea	18	Optic chiasm		



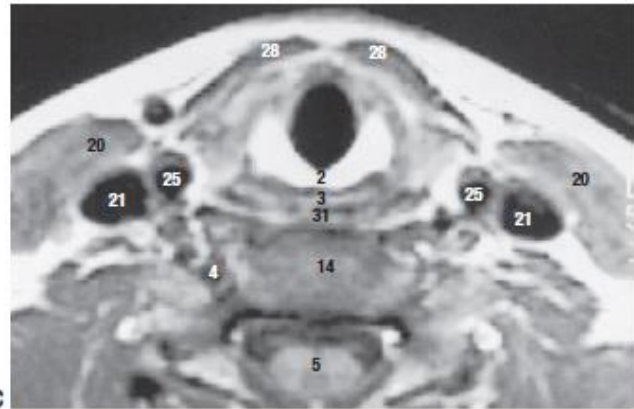
B. Transverse Section and Transverse (axial) MRI Scan

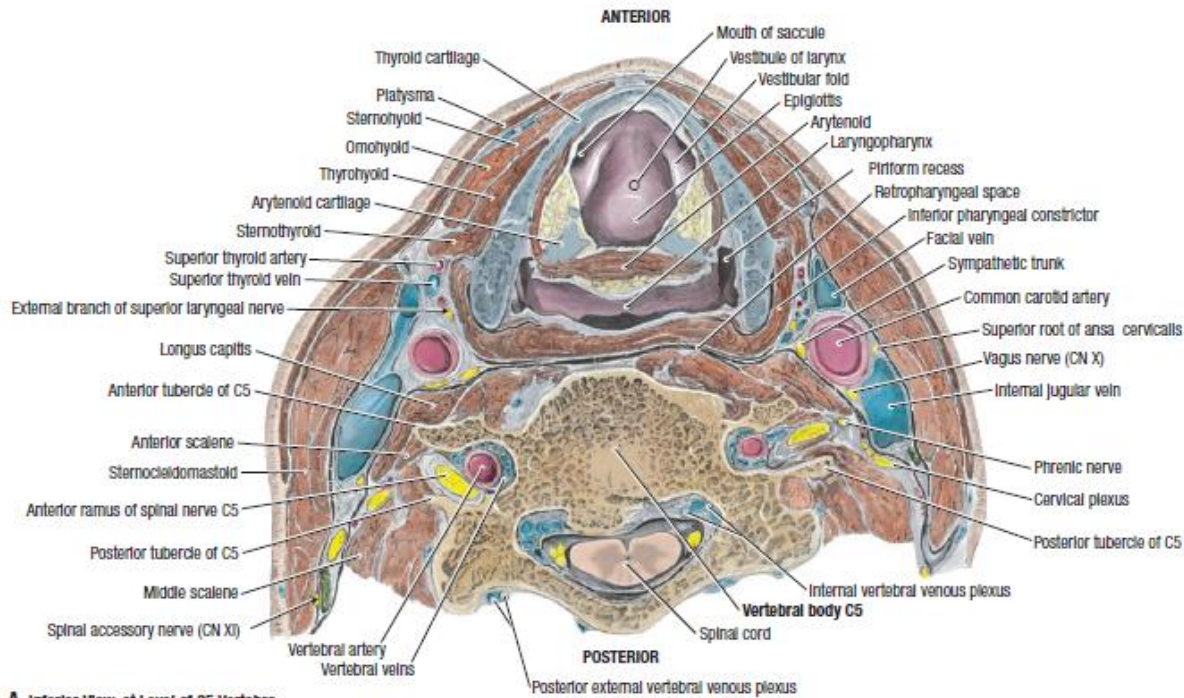
Key

- | | | |
|---|--|---|
| 1 Orbicularis oris muscle | 12 Ramus of mandible | 23 Transverse ligament of atlas |
| 2 Levator anguli oris muscle | 13 Lateral pterygoid muscle | 24 Spinal cord |
| 3 Facial artery and vein | 14 Parotid gland | 25 Vertebral artery in foramina transversaria |
| 4 Zygomaticus major muscle | 15 Superficial temporal vessels | 26 Longus colli muscle |
| 5 Buccinator muscle | 16 Region of pharyngeal tubercle | 27 Longus capitis muscle |
| 6 Maxilla | 17 Sphenoid bone | 28 Internal carotid artery |
| 7 Alveolar process of maxilla | 18 Stylohyoid ligament and muscle | 29 Internal jugular vein |
| 8 Dorsum of tongue | 19 Posterior belly of digastric muscle | 30 Inferior portion of helix of auricle |
| 9 Soft palate (uvula apparent in image) | 20 Occipital artery | a Hard palate |
| 10 Masseter muscle | 21 First cervical vertebrae (atlas) | b Palatoglossus muscle |
| 11 Retromandibular vein | 22 Dens (axis) | c Palatopharyngeus muscle |

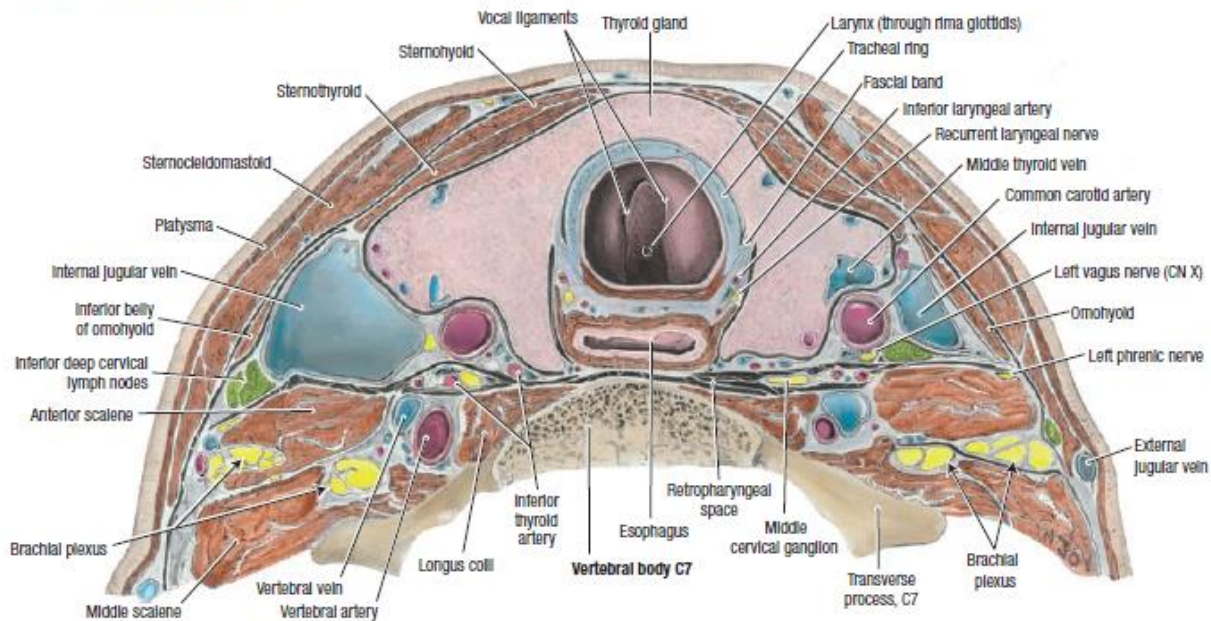


1 Tooth	16 Semispinalis cervicis
2 Cricoid cartilage	17 Semispinalis capitis
3 Pharynx	18 Splenius capitis
4 Vertebral artery	19 Trapezius
5 Spinal cord	20 Sternocleidomastoid
6 Cerebrospinal fluid in subarachnoid space	21 Internal jugular vein
7 Body of mandible	22 Bifurcation of common carotid artery
8 Mylohyoid	23 Levator scapulae
9 Hyoglossus	24 External jugular vein
10 Genioglossus	25 Common carotid artery
11 Buccal fat pad	26 Rima glottidis
12 Submandibular gland	27 Vocal fold
13 Intrinsic muscles of tongue	28 Strap muscles
14 Vertebral body	29 Thyroid cartilage
15 Lamina of vertebra	30 Sublingual gland
	31 Inferior pharyngeal constrictor

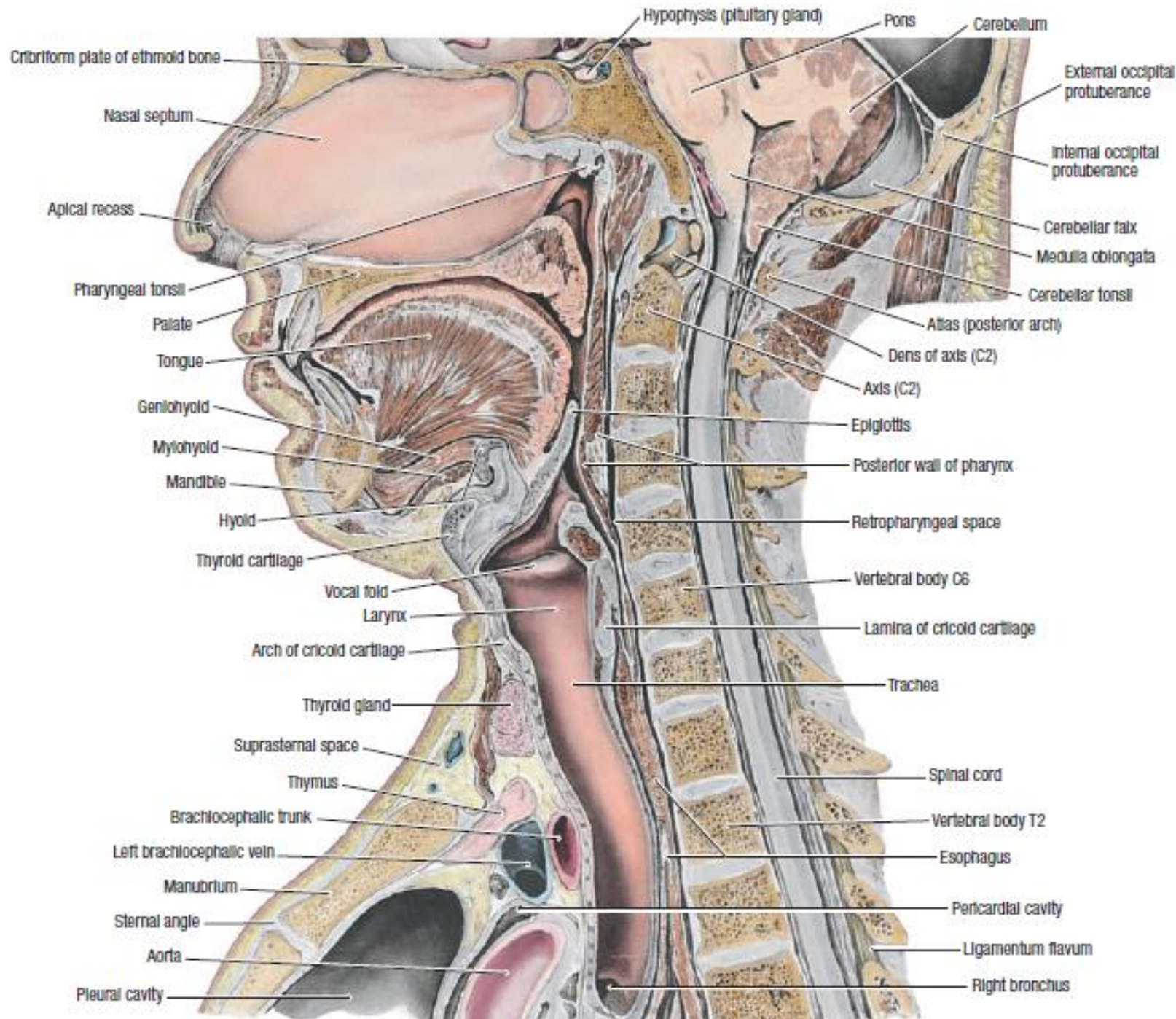


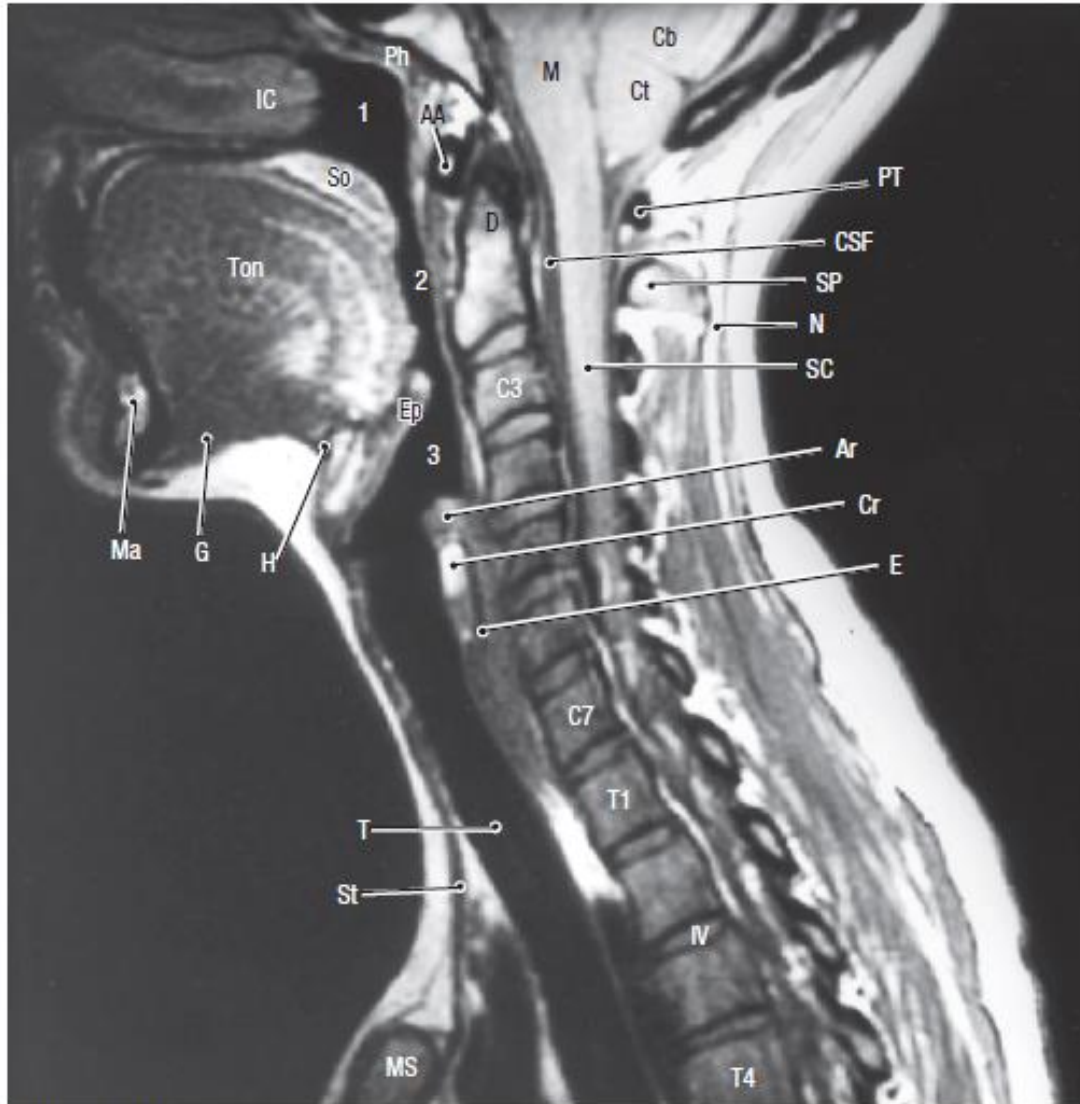


A. Inferior View, at Level of C5 Vertebra



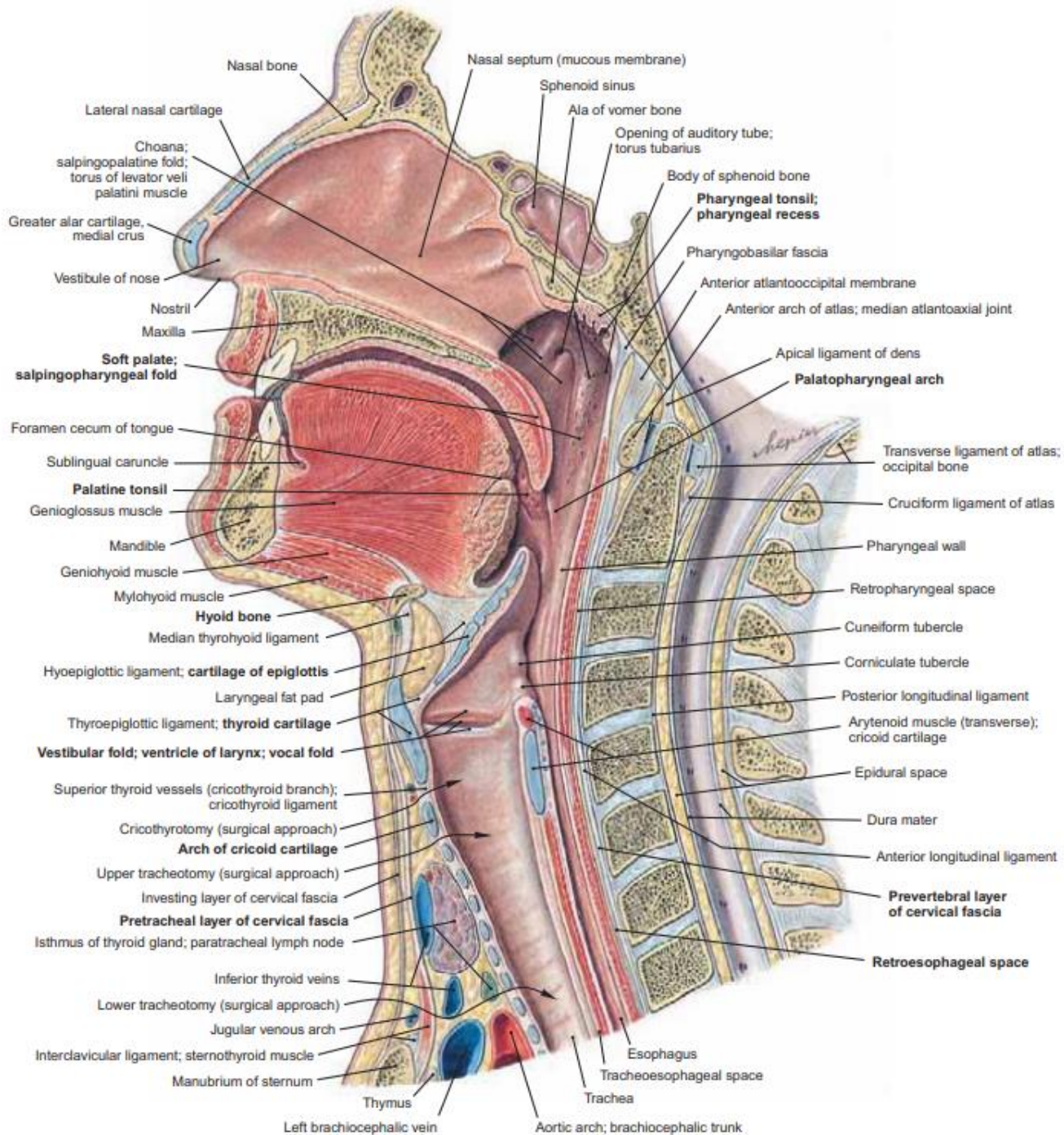
B. Inferior View, at Level of C7 Vertebra

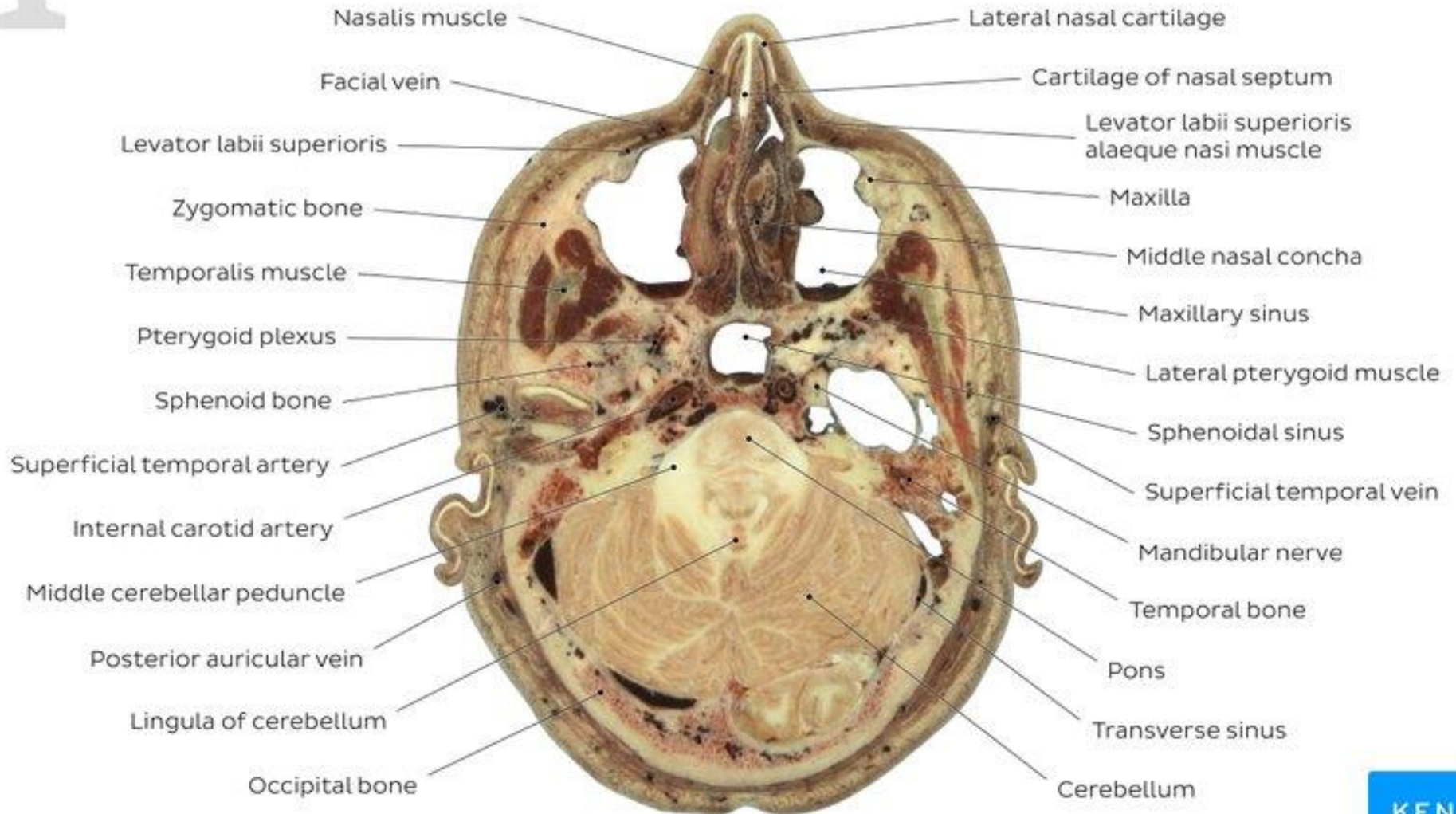


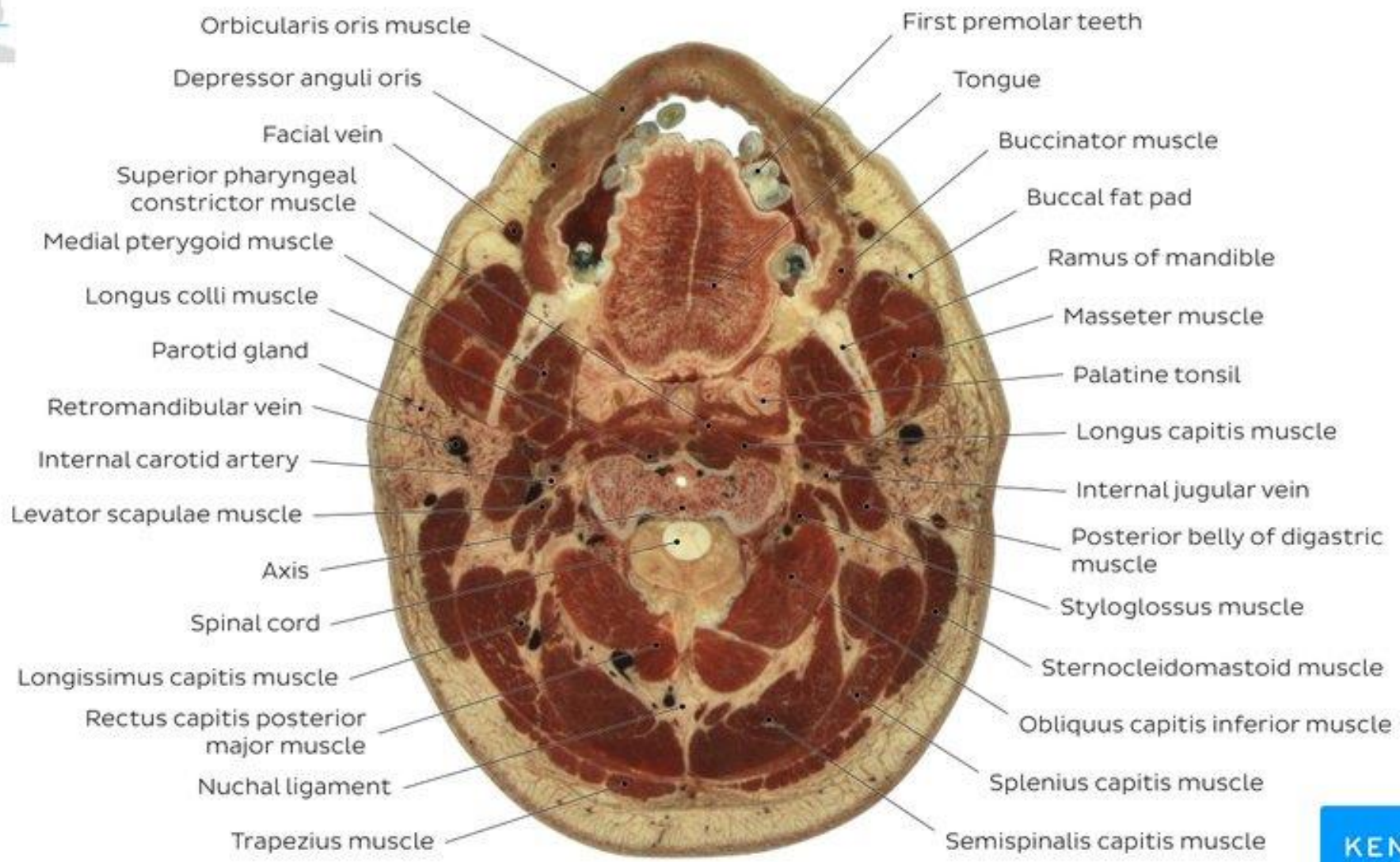


B. Median MRI Scan

AA	Anterior arch of C1
Ar	Arytenoid cartilage
C3-T4	Vertebral bodies
Cb	Cerebellum
Cr	Cricoid cartilage
CSF	Cerebrospinal fluid in subarachnoid space
Ct	Tonsil of cerebellum
D	Dens
E	Esophagus
Ep	Epiglottis
G	Genioglossus
H	Hyoid
IC	Inferior concha
IV	Intervertebral disc
M	Medulla oblongata
Ma	Mandible
MS	Manubrium of sternum
N	Nuchal ligament
Ph	Pharyngeal tonsil (adenoid)
PT	Posterior tubercle of C1
SC	Spinal cord
So	Soft palate
SP	Spinous process
St	Strap muscles
T	Trachea
Ton	Tongue
1	Nasopharynx
2	Oropharynx
3	Laryngopharynx







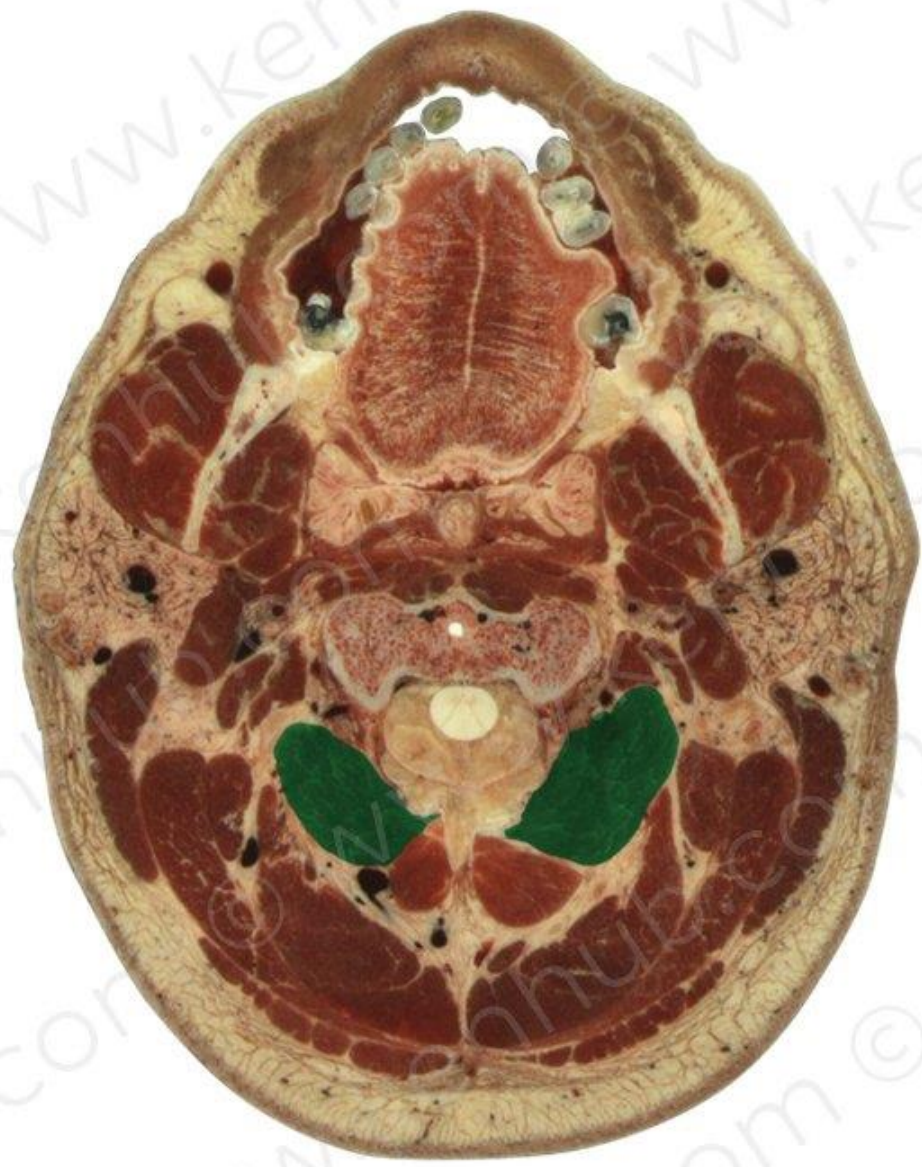
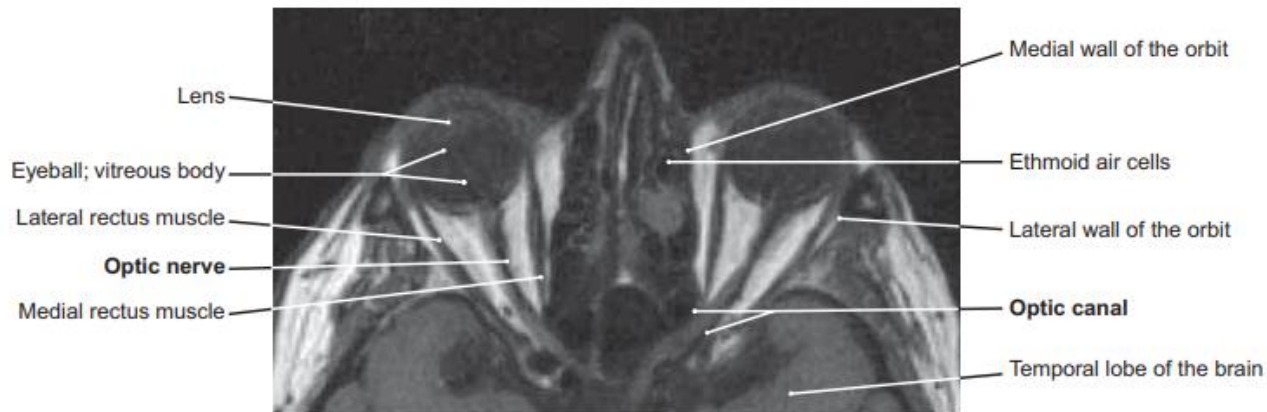
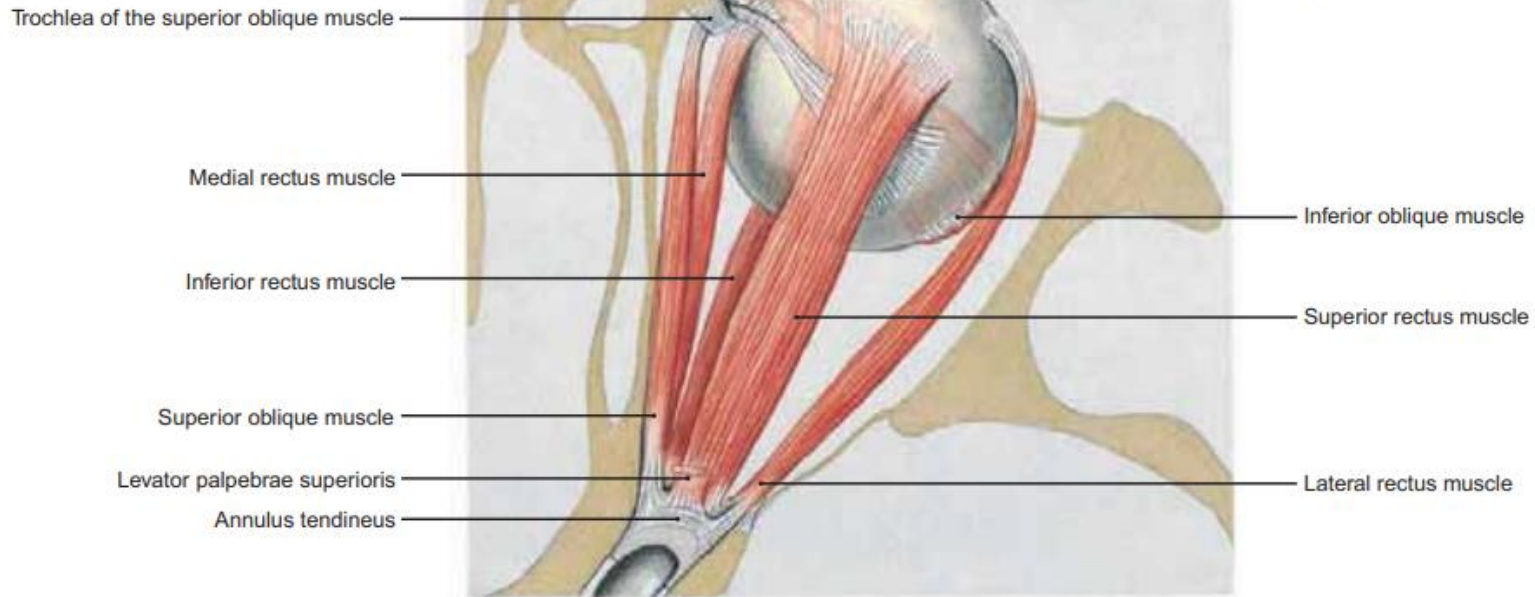


FIGURE 605.1 Superior View of the Extraocular Muscles of the Right Eye



Anterior (Ventral) Division

Hypoglossal (accompanys CN XII)

- 1 Geniohyoideus [C1-C2]
- 2 Thyreohyoideus [C1-C2]

Descending Hypoglossal (Inf. root-Ansa Cervicalis)

- 3 Omohyoideus [C1-C3]
- ### Ansa Cervicalis (Hypoglossi)

- 4 Sternohyoideus [C1-C3]
- 5 Sternothyroideus [C1-C3]
- 6 Sternocleidomastoideus [C2-C3]
- 7 Levator scapulae 3 mixed [C3-C4]
- 8 Longus capitus [C1-C4]
- 9 Longus colli [C2-C7]
- * 10 Rectus capitus anterior [C1-C2]
- 11 Rectus capitus lateralis [C1-C2]
- 12 Scalenus anterior [C4-C6]
- 13 Scalenus medius rarely [C3-C8]
- 14 Scalenus posterior [C6-C8]
- 15 Subclavius [C5-C6]

Trigeminal (CN V)

Mandibular (CN V₃)

Medial Pterygoid

- 1 Tensor veli palatini

Anterior trunk

Masseteric

- 2 Masseter

Deep Temporal

- 3 Temporalis

Lateral (External) Pterygoid

- 4 Lateral Pterygoid

- 5 Medial Pterygoid

Buccinator

- 6 Buccinator 3 mixed

Posterior trunk

Inferior Alveolar-mylohyoid branch

- 7 Mylohyoideus
- 8 Digastricus-anterior belly

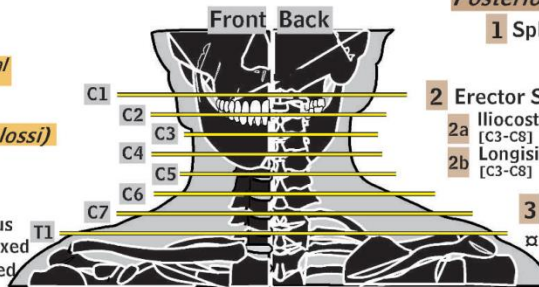
Facial (CN VII)

- 1 Digastricus-posterior belly
- 2 Stylohyoideus
- 3 Muscles of facial expression

Glossopharyngeal (CN IX)

- 1 Stylopharyngeus

Key: The locations of the axial slices are indicated by vertebral level. Peripheral nerves of the neck and shoulder are named and colored. The muscles supplied by a nerve are colored to match the nerve and numbered. Muscles marked with * are not shown on the axial sections.



Posterior (Dorsal) Division

- 1 Splenius 1a Splenius capitus [C2-C3]
- 1b Splenius cervicis [C2-C8]

- 2 Erector Spinae 2a Iliocostalis cervicis [C3-C8]
- 2b Longissimus cervicis [C3-C8]

3 Transversospinal

- 3a Semispinalis capitus (Complexus) [C1-C2]
- 3b Semispinalis cervicis (colli) [C1-T5]

- 3c Multifidus [C6-C8]

- 3d Rotatores breves [C2-C8-segmental]

- 3e Rotatores longi [C2-C8-segmental]

- 3f Obliquus capitus superior [C1]

- 3g Obliquus capitus inferior [C1-C2]

- 3h Rectus capitus posterior major [C1]

- 3i Rectus capitus posterior minor [C1]

- * 4 Interspinal [C2-C8-segmental]

- * 5 Intertransverse [C2-C8-segmental]

- * 6 Levator costarum [T1-T2]

- α Suboccipital

Dorsal Scapular

- 1 Levator scapulae 7 mixed [C5]
- 2 Rhomboideus minor [C5]
- 3 Rhomboideus major [C5]

Suprascapular

- 1 Suprascapularis [C5, C6]
- 2 Infraspinatus [C5, C6]

Axillary

- * 1 Teres minor [C5, C6]

- 2 Deltoid [C5, C6]

Long Thoracic

- 1 Serratus anterior [C5 - C7]

Vagus (CN X)

Pharyngeal (via Pharyngeal Plexus)

- 1 Pharyngeal 1a Palatopharyngeus
- 1b Palatoglossus
- 1c Constrictors 4 7
- 2 Soft palate

Spinal Accessory (CN XI)

Cranial (via Pharyngeal Plexus)

- 1 Musculus uvula
- 2 Levator veli palatini
- 3 Sternocleidomastoideus 6 mixed [C2-C3]
- 4 Trapezius [C3-C4]

Spinal

Superior Laryngeal-external branch

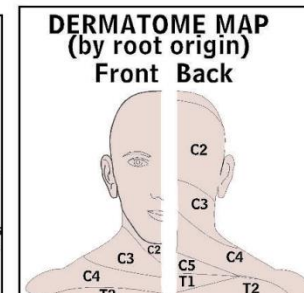
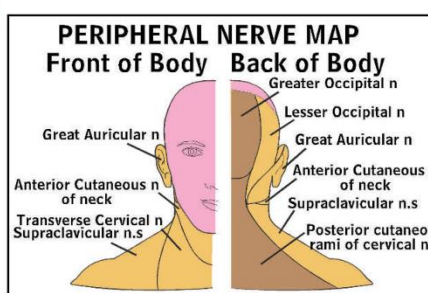
- 3 Cricothyroideus
- 4 Constrictor pharyngis inferior 1c

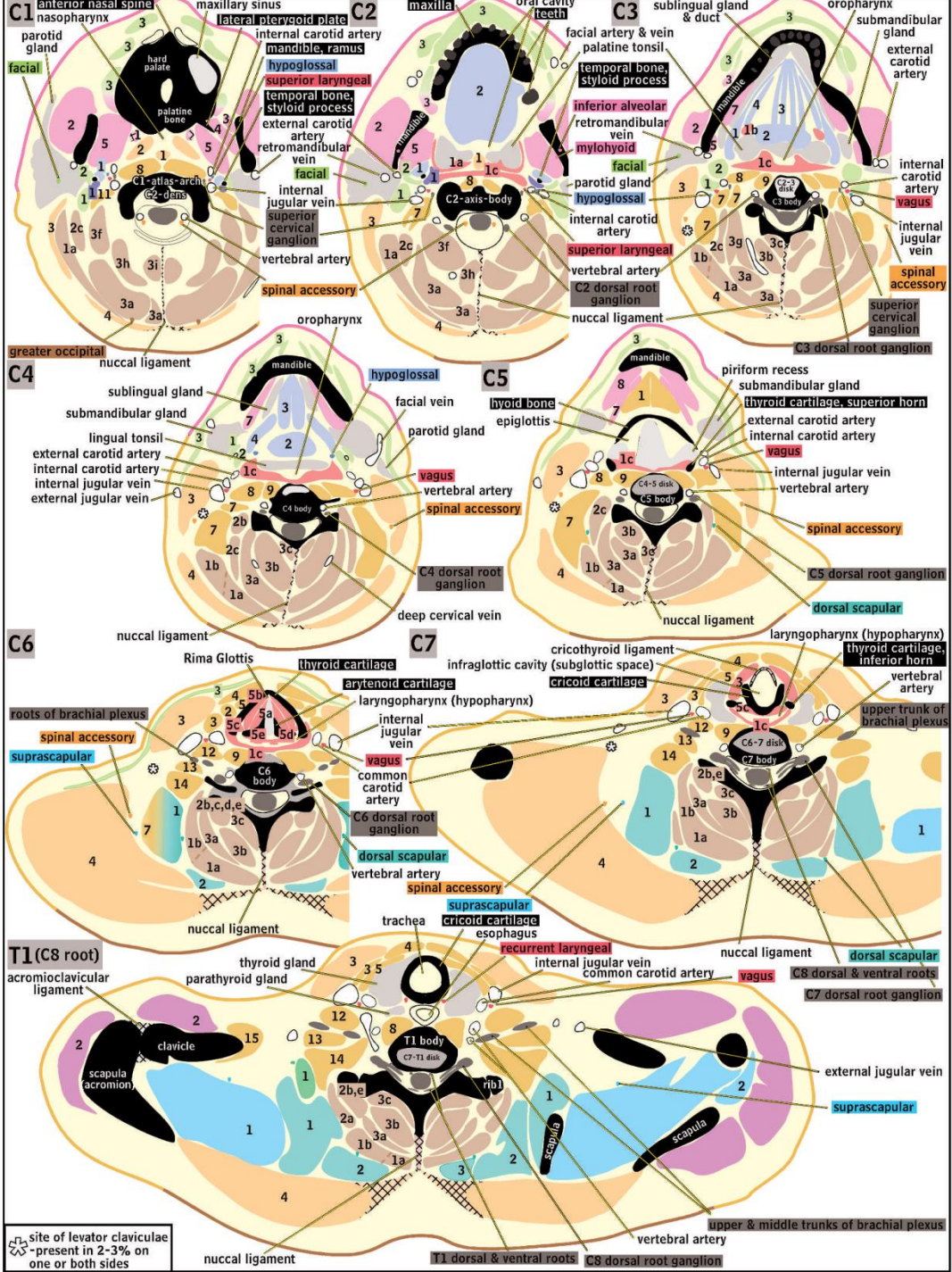
Recurrent (Inferior) Laryngeal

- 5 Larynx 5a Medial thyroarytenoid (Vocalis)
- 5b Lateral thyroarytenoid
- 5c Superior thyroarytenoid
- 5d Transverse arytenoid
- 5e Oblique arytenoid
- * 5f Posterior cricoarytenoid
- 6 Tracheal
- 7 Constrictor pharyngis inferior 1c

Hypoglossal (CN XII)

- 1 Styloglossus
- 2 Intrinsic of tongue
- 3 Genioglossus
- 4 Hyoglossus





site of levator claviculae
 present in 2-3% on one or both sides



