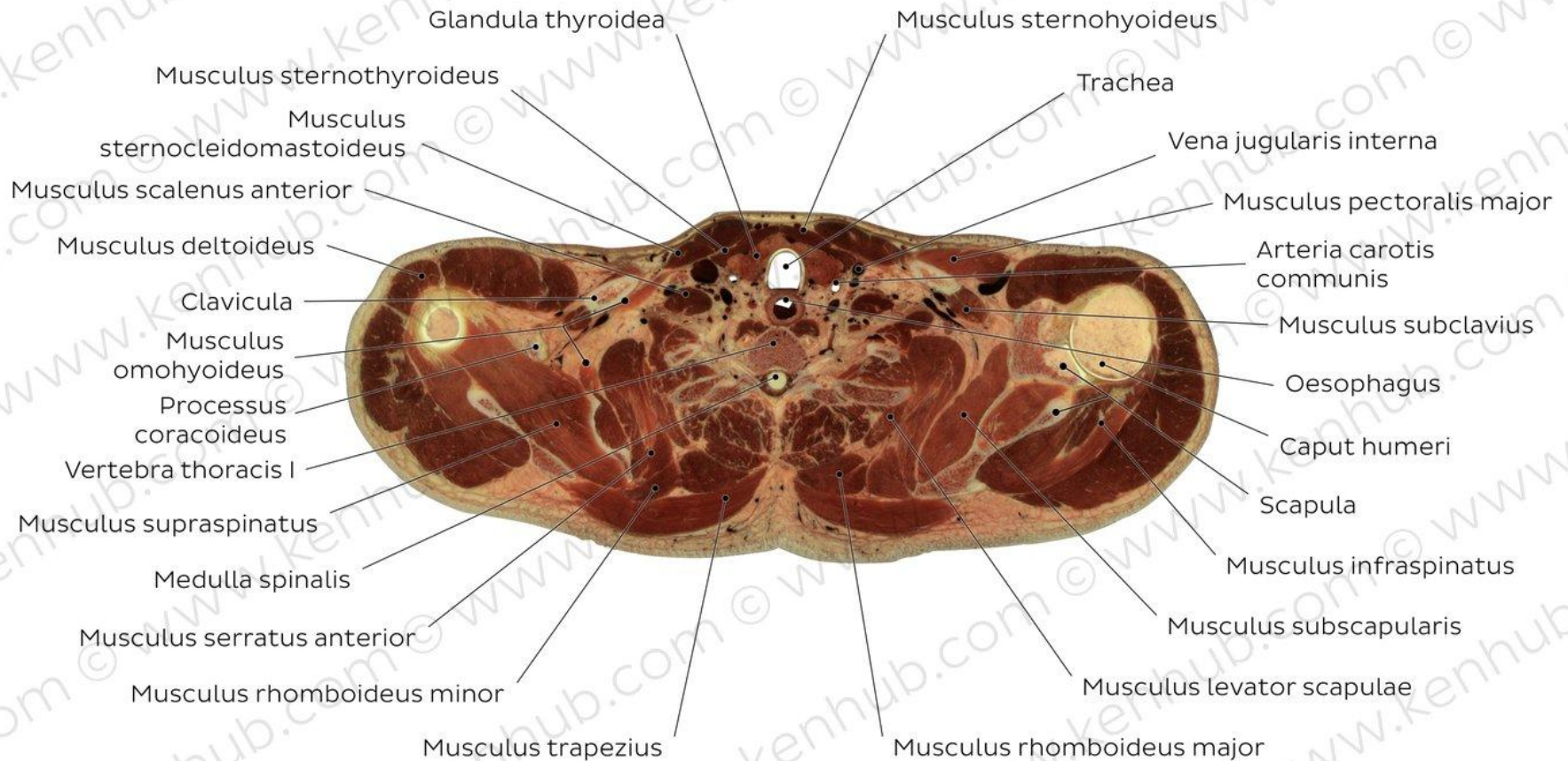
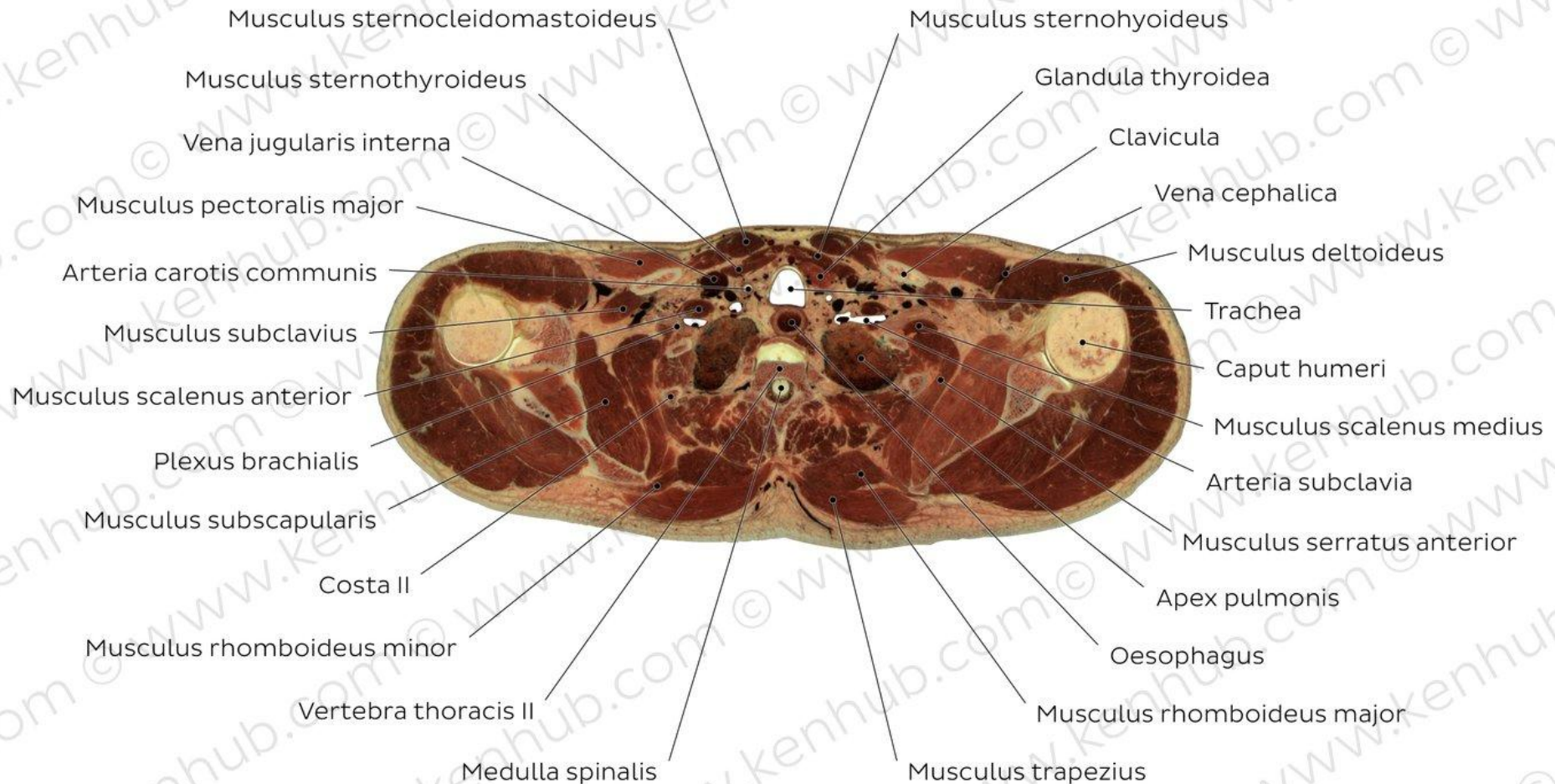


Cross sectional Anatomy of the Thorax

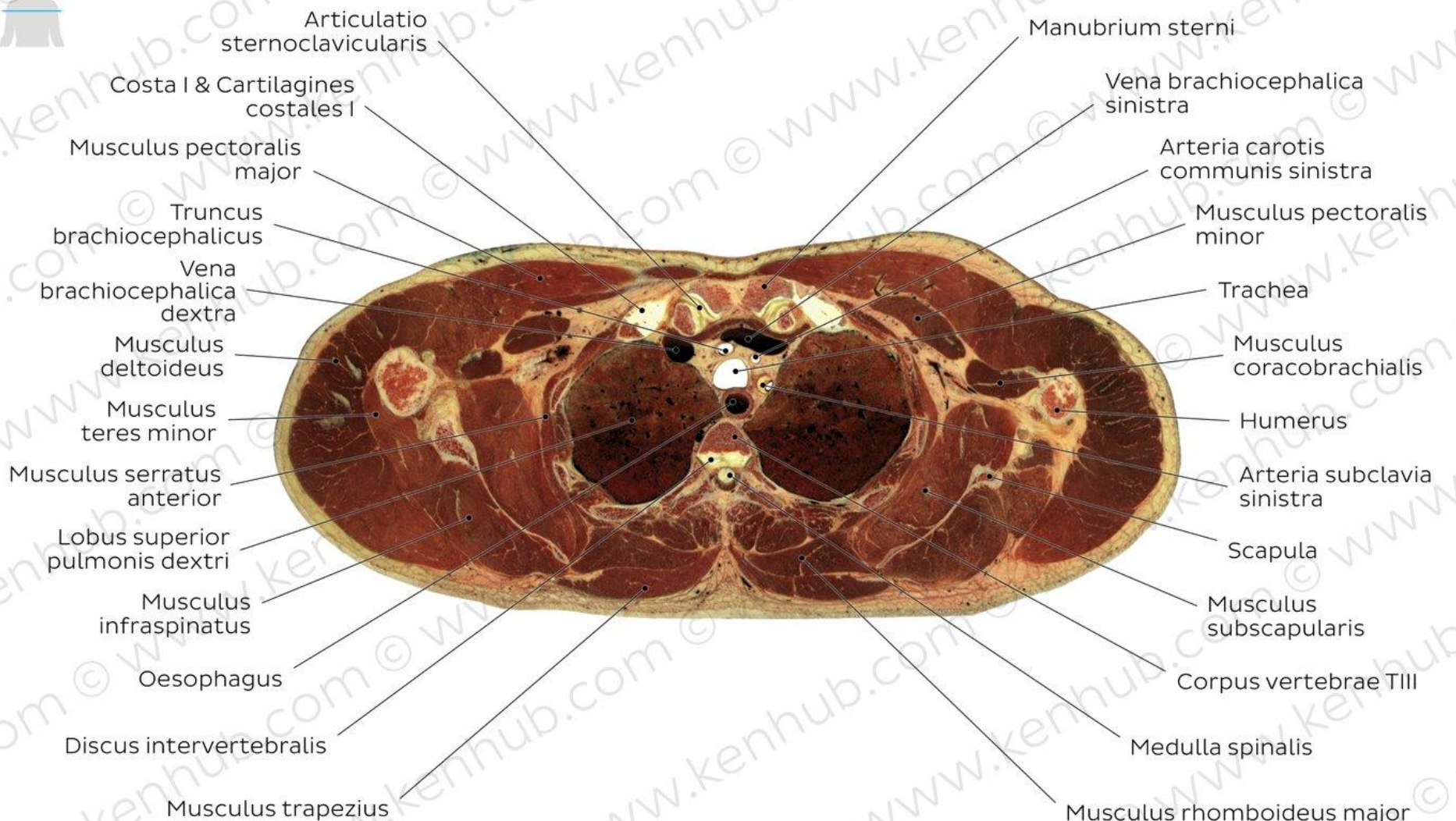
Thoracic 1st level



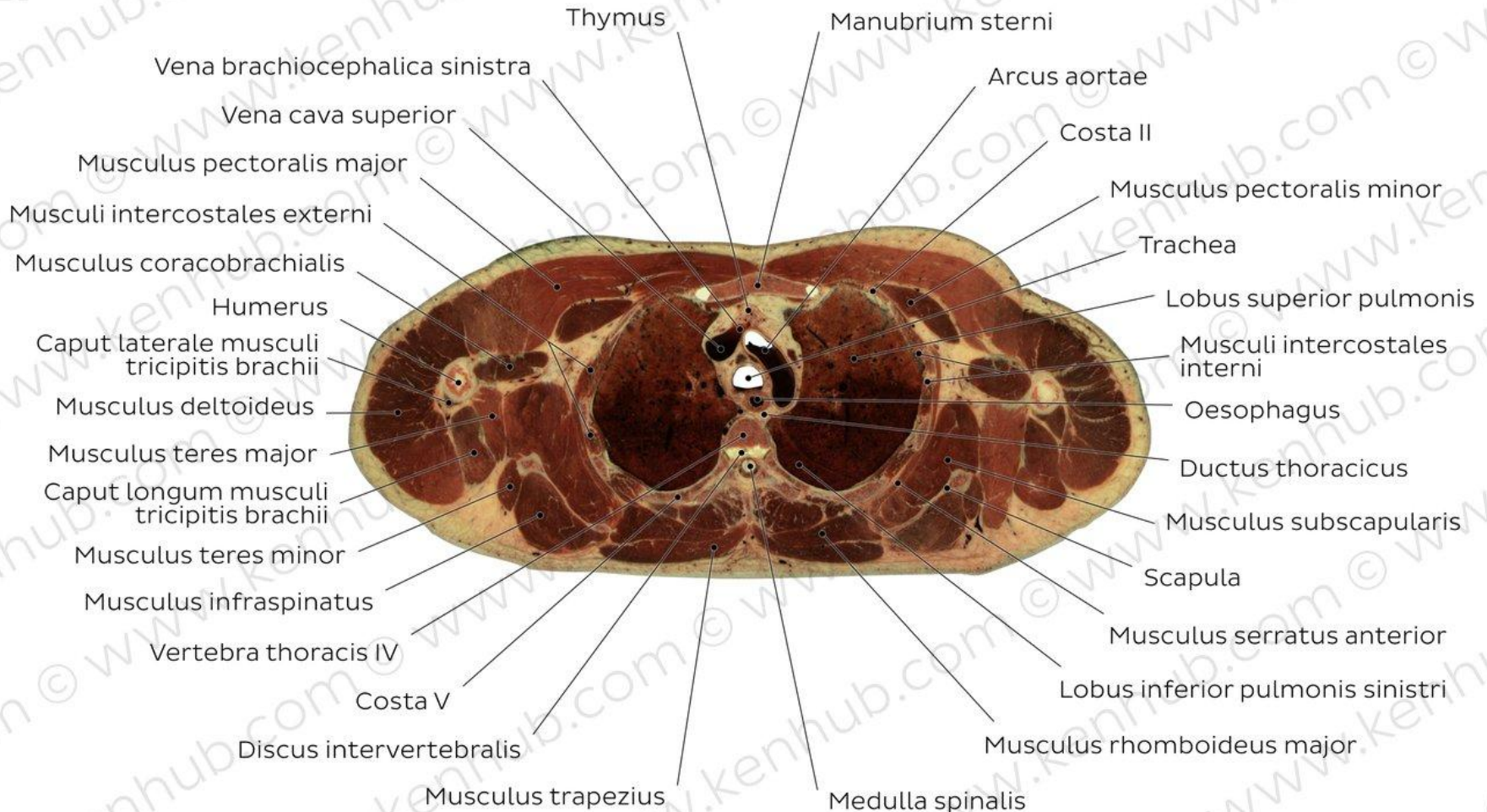
2nd Thoracic level



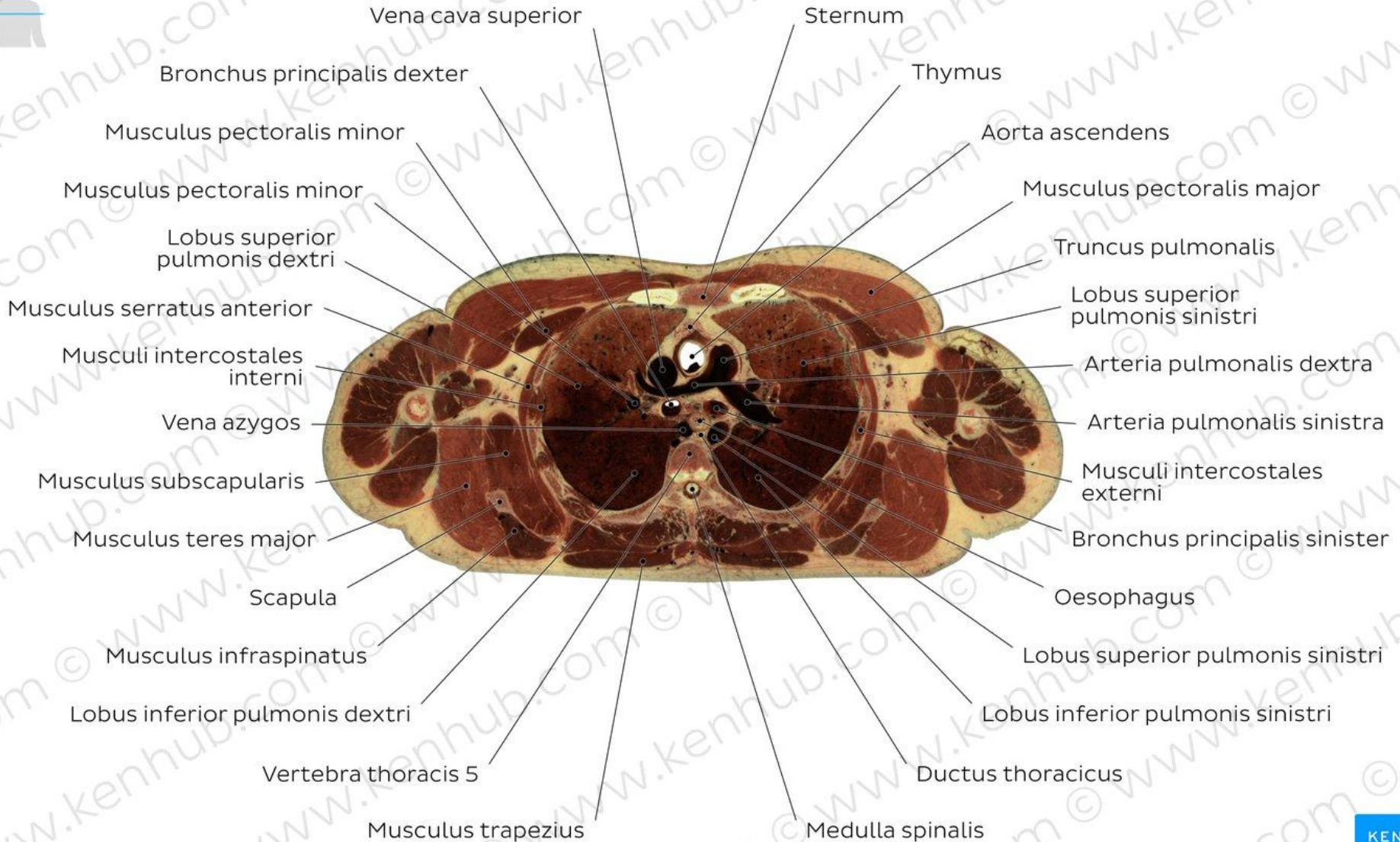
3rd Thoracic level



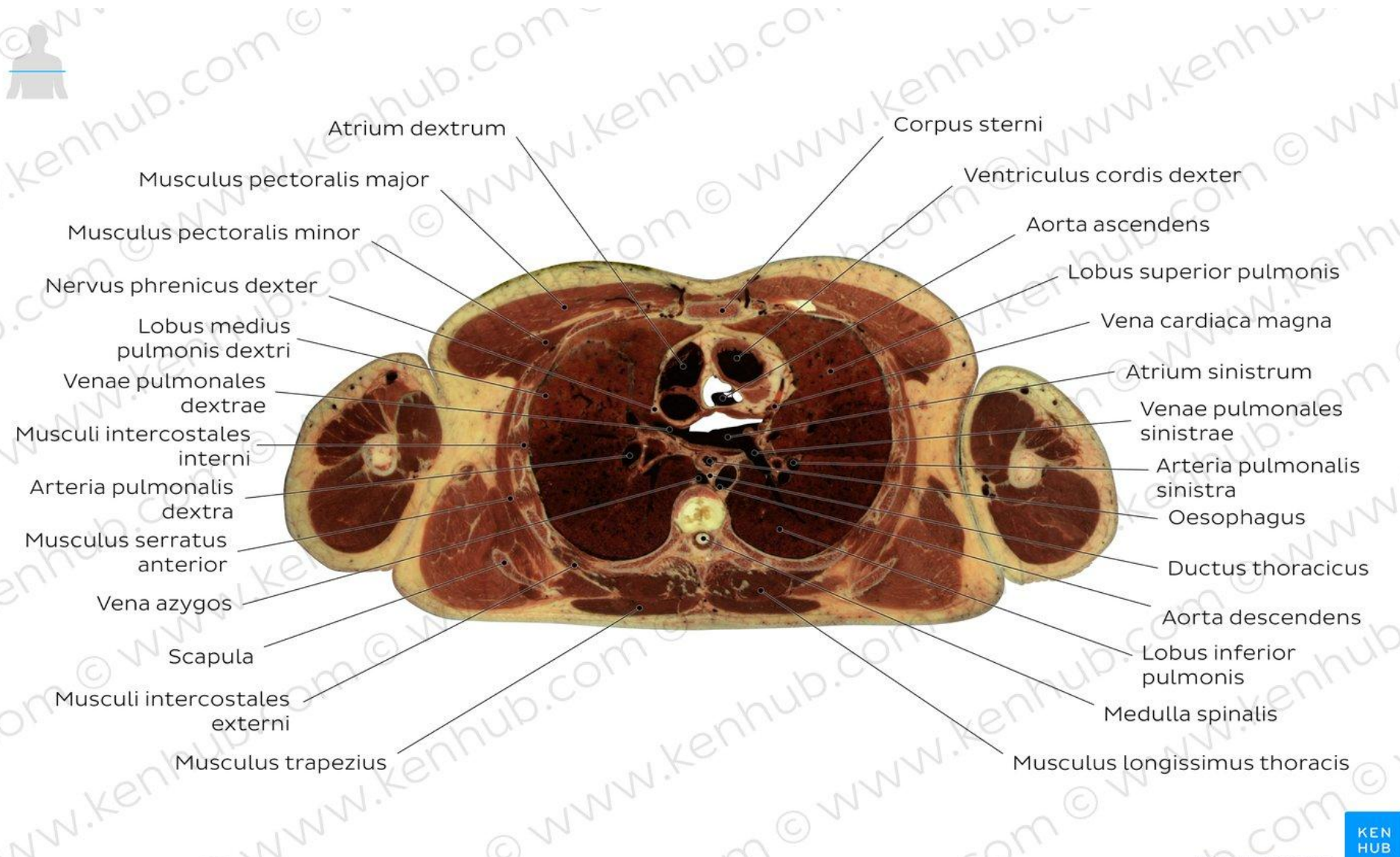
4th Thoracic level



5th Thoracic level

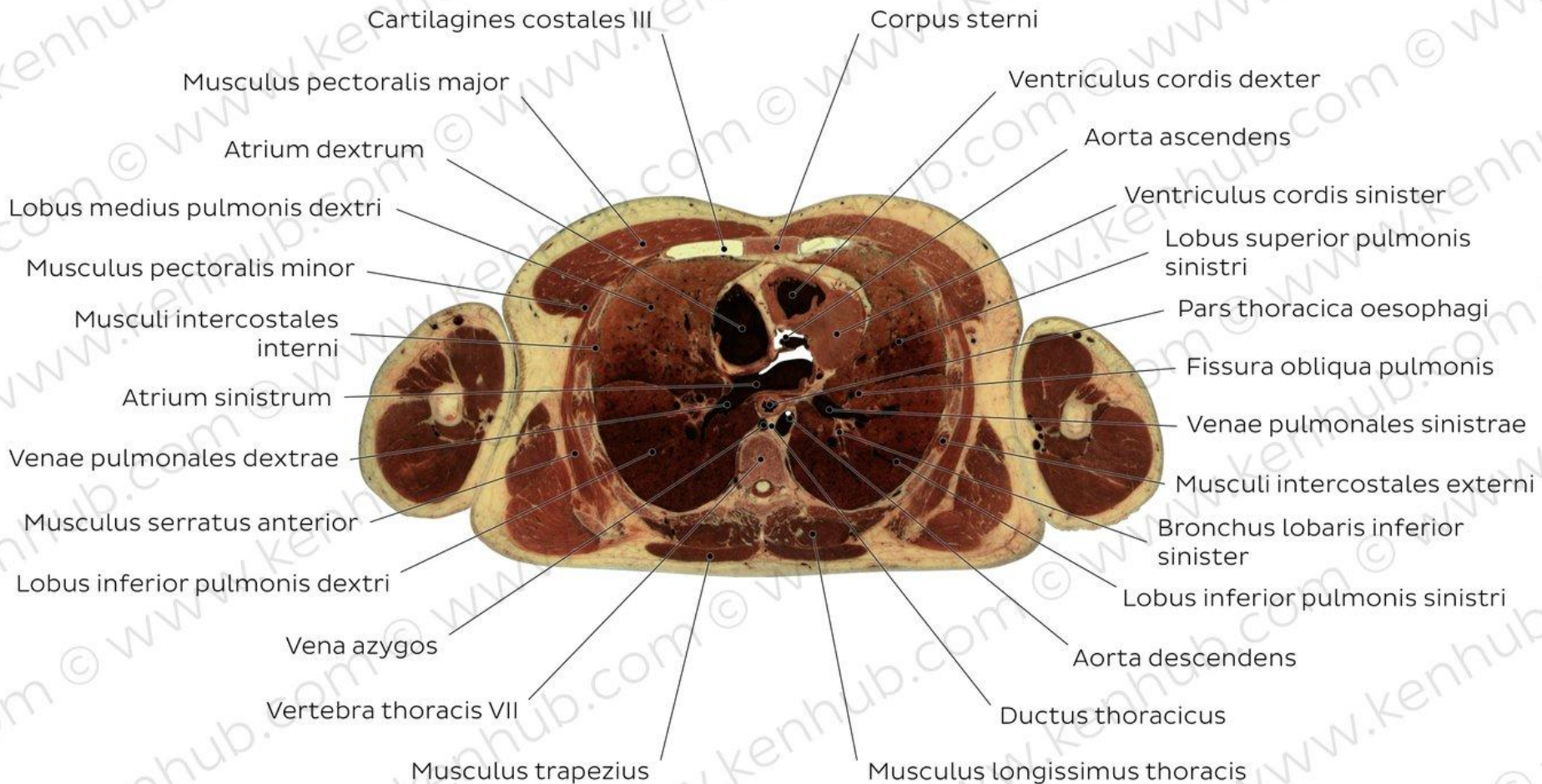


6th Thoracic level (pulmonary veins level)

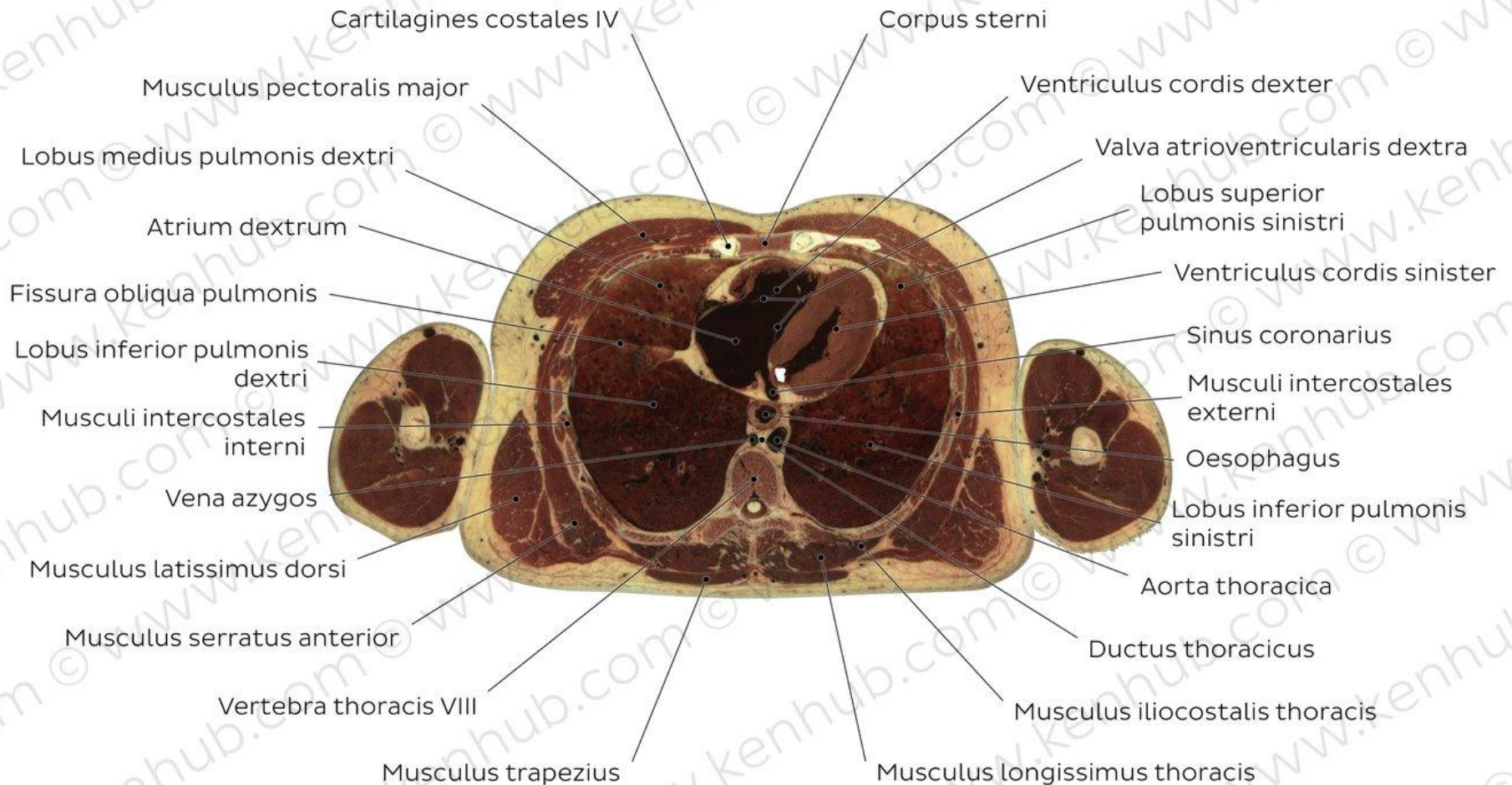


- Atrium dextrum
- Musculus pectoralis major
- Musculus pectoralis minor
- Nervus phrenicus dexter
- Lobus medius pulmonis dextri
- Venae pulmonales dextrae
- Musculi intercostales interni
- Arteria pulmonalis dextra
- Musculus serratus anterior
- Vena azygos
- Scapula
- Musculi intercostales externi
- Musculus trapezius
- Corpus sterni
- Ventriculus cordis dexter
- Aorta ascendens
- Lobus superior pulmonis
- Vena cardiaca magna
- Atrium sinistrum
- Venae pulmonales sinistrae
- Arteria pulmonalis sinistra
- Oesophagus
- Ductus thoracicus
- Aorta descendens
- Lobus inferior pulmonis
- Medulla spinalis
- Musculus longissimus thoracis

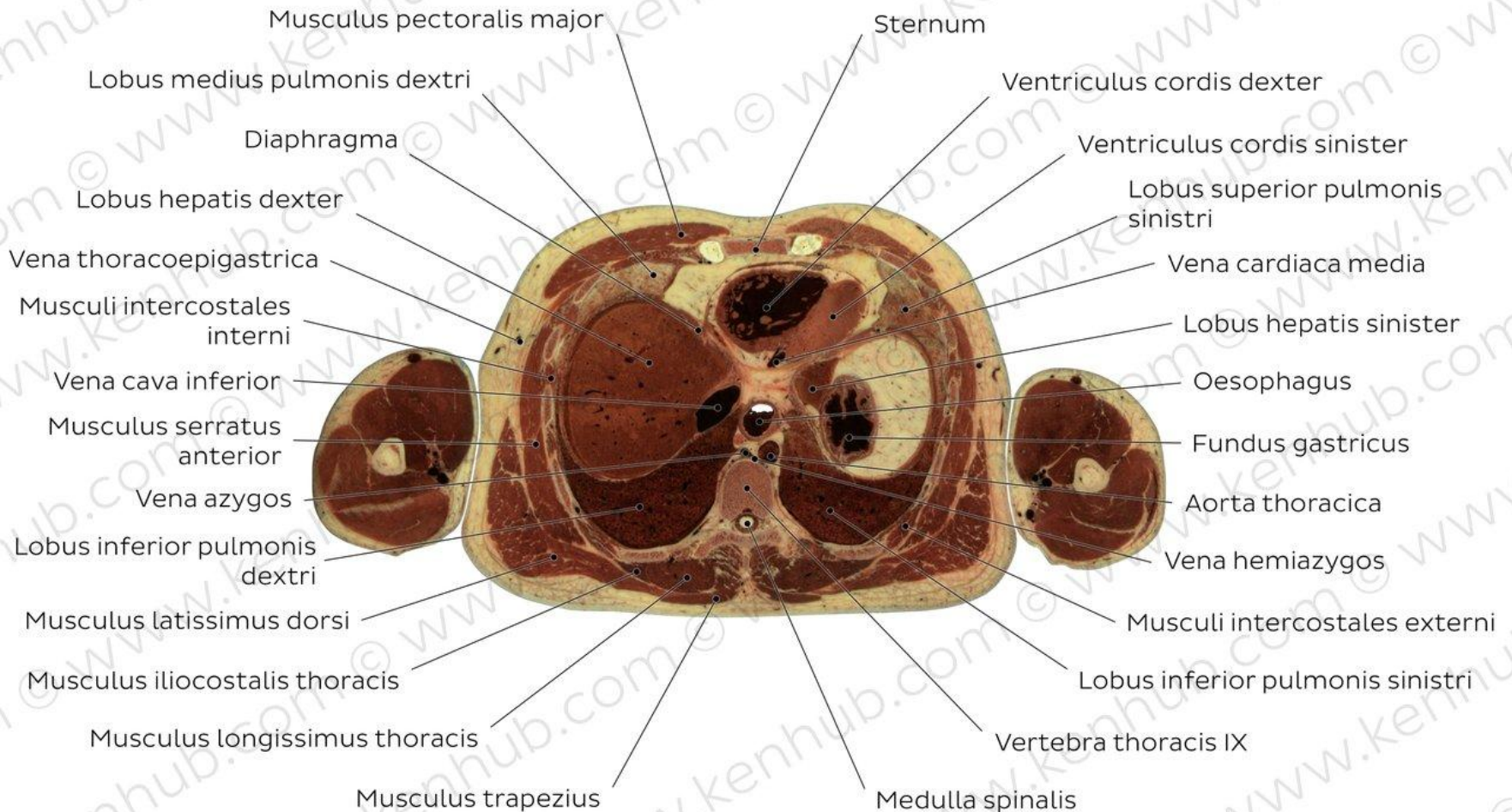
7th Thoracic level



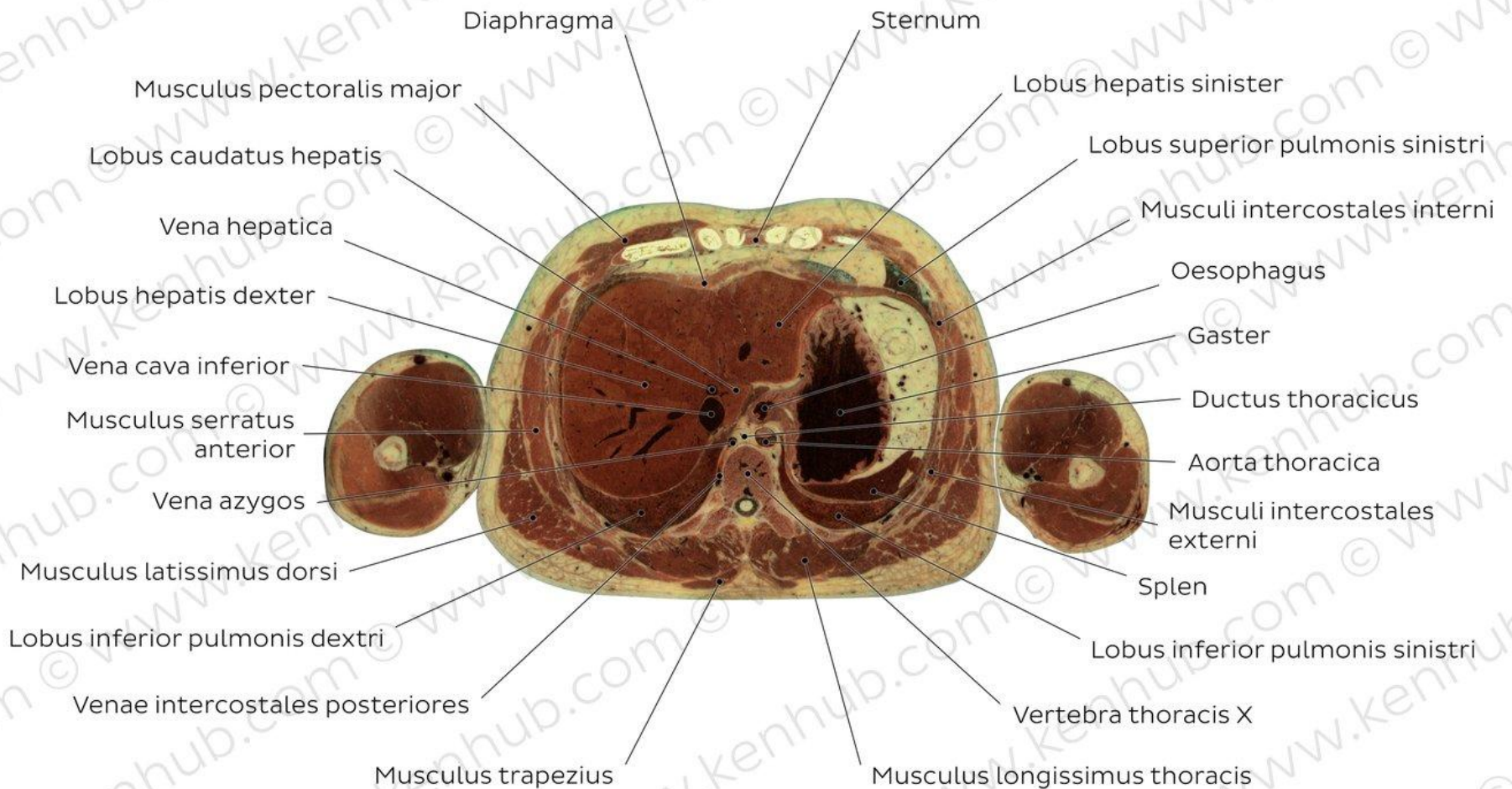
8th Thoracic level



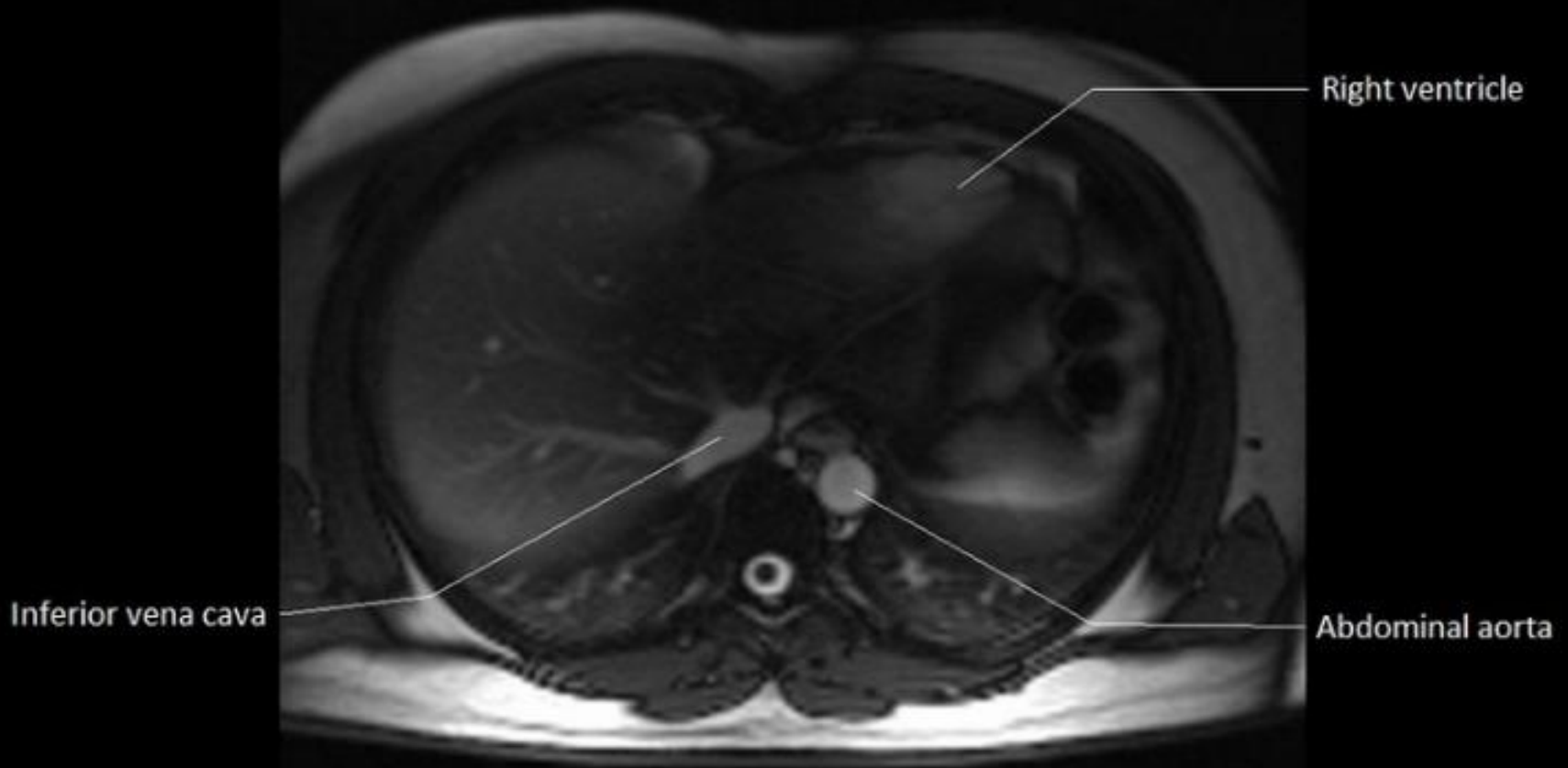
9th Thoracic level



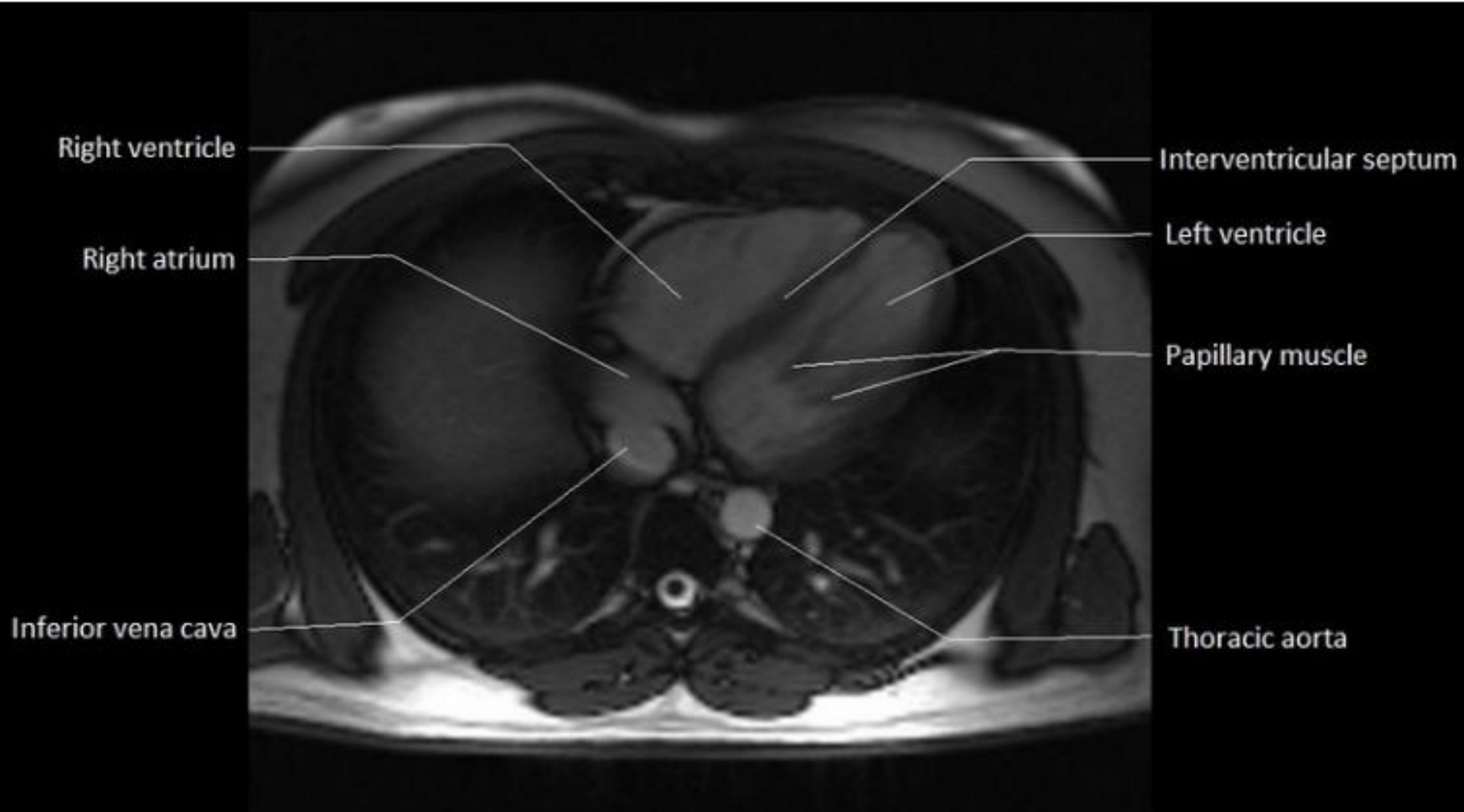
10th Thoracic level



MRI crosssection of the heart from down to up



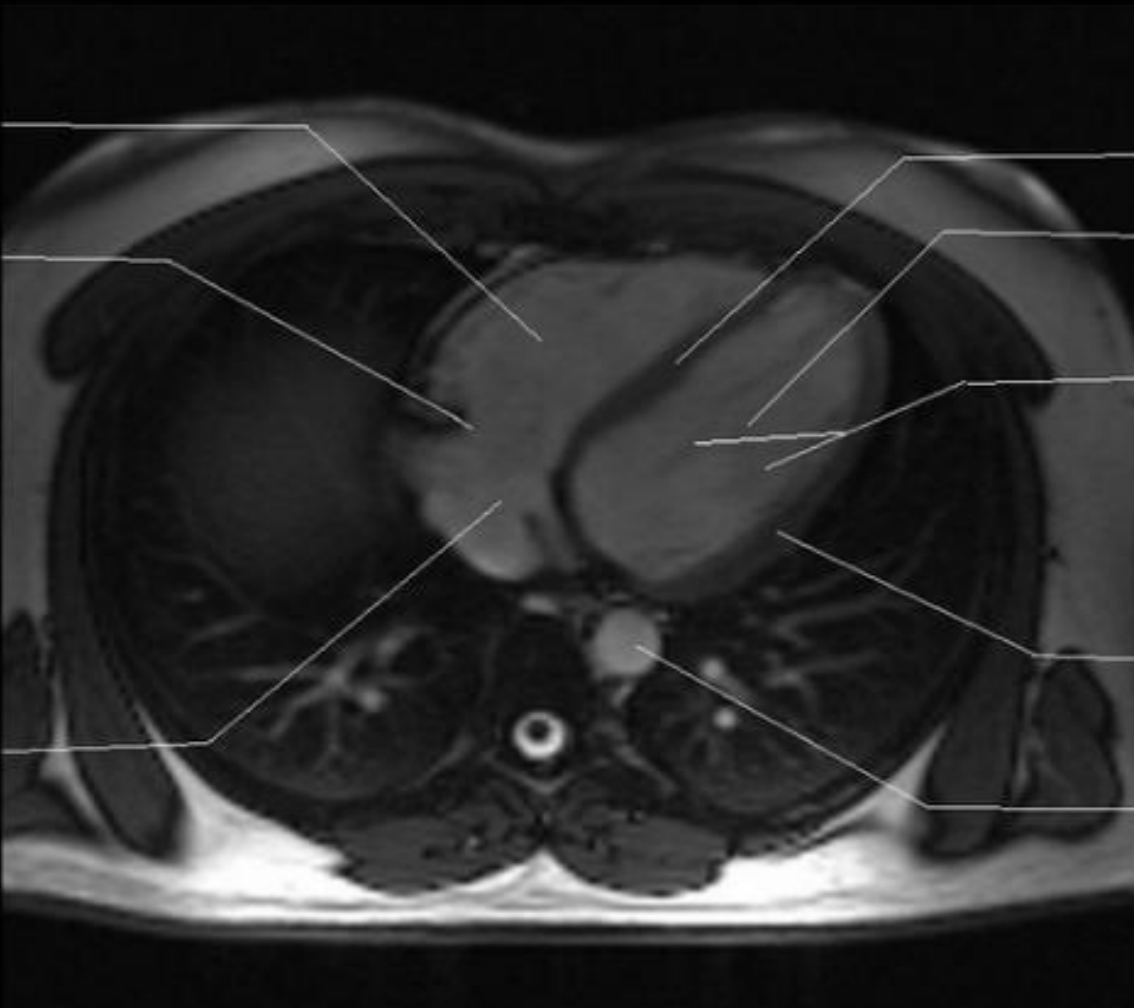




Right ventricle

Tricuspid valve

Right atrium



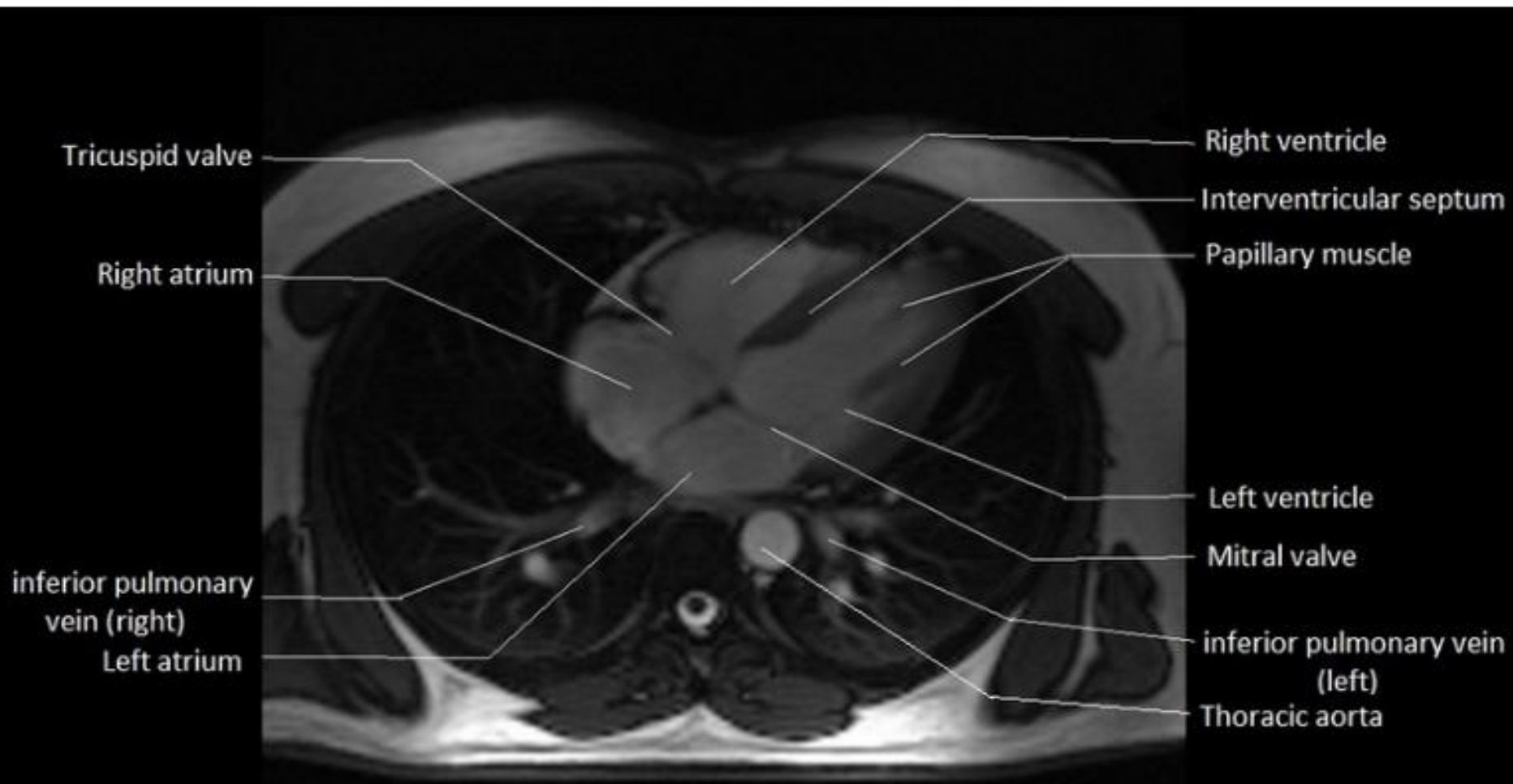
Interventricular septum

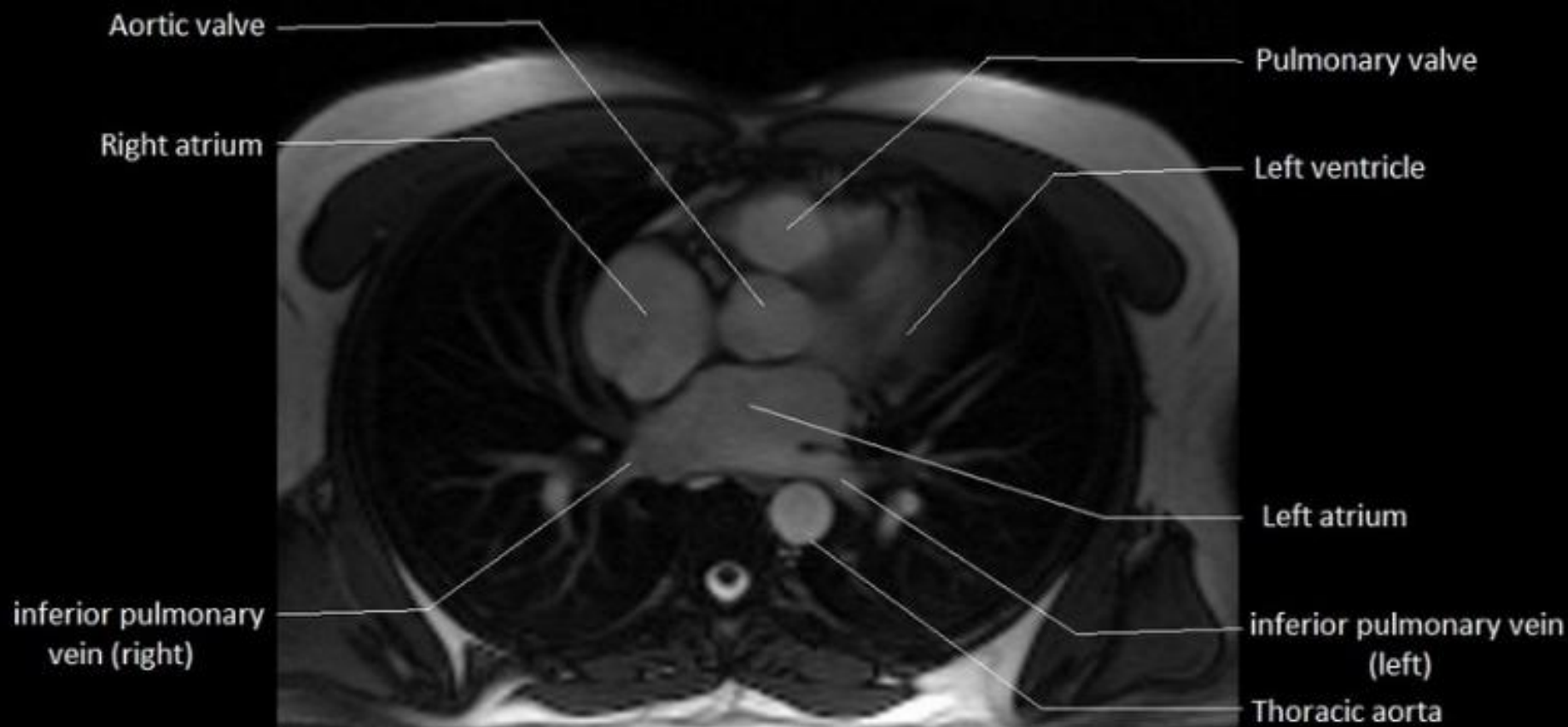
Left ventricle

Chordae tendineae

Myocardium

Thoracic aorta



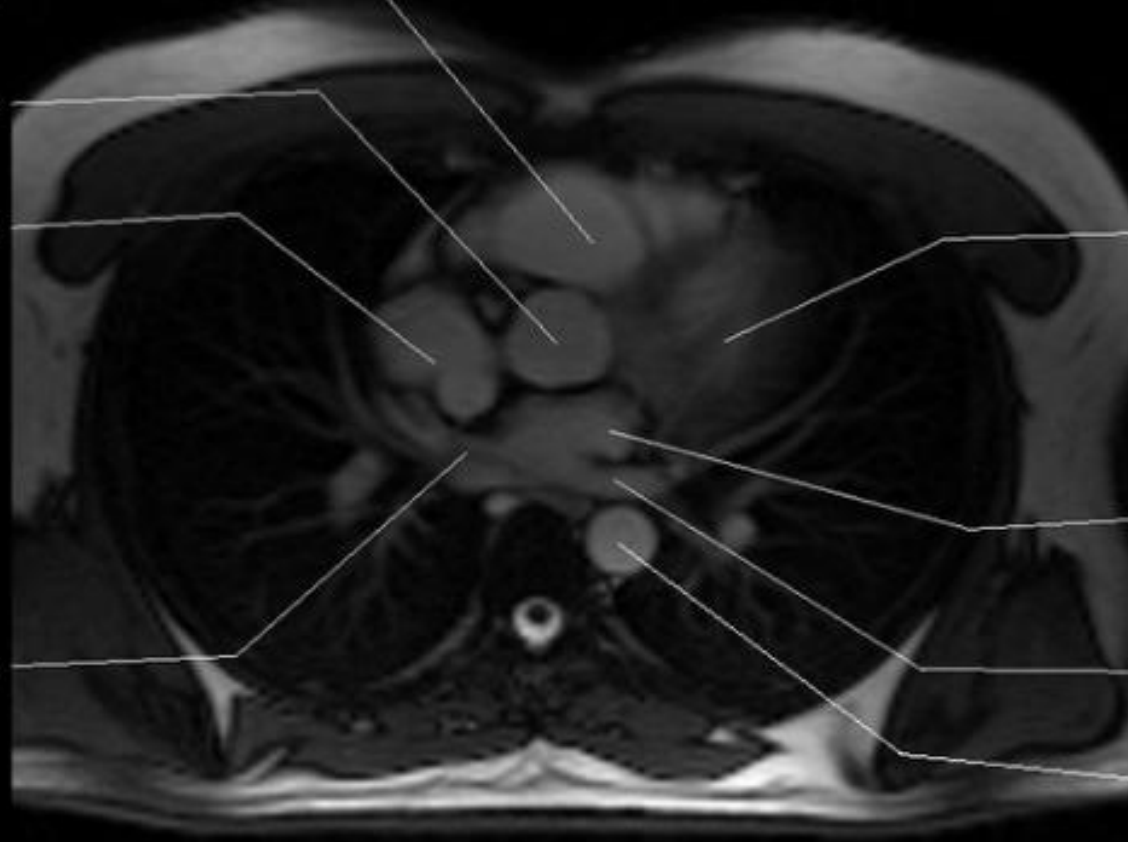


Pulmonary trunk

Ascending aorta

Right atrium

inferior pulmonary vein (right)



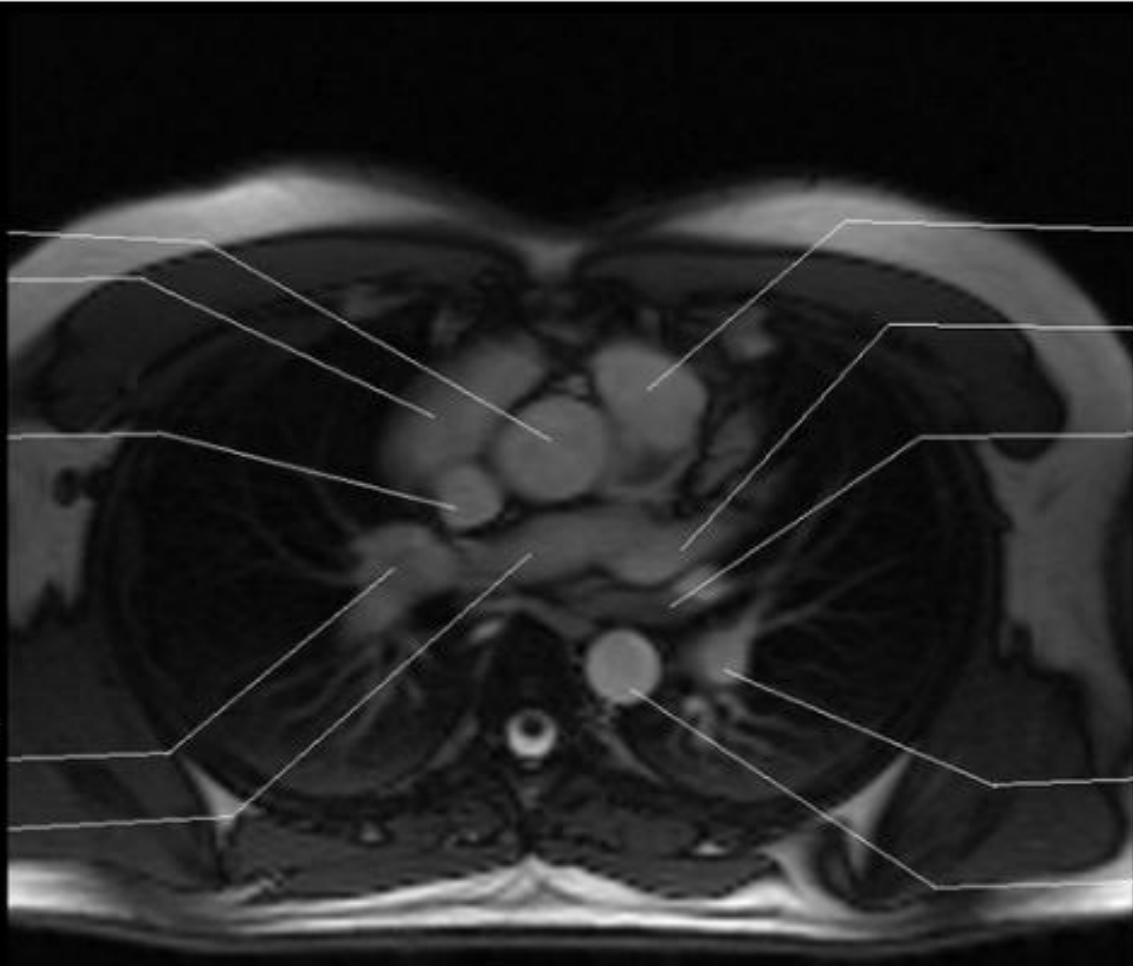
Left ventricle

Left atrium

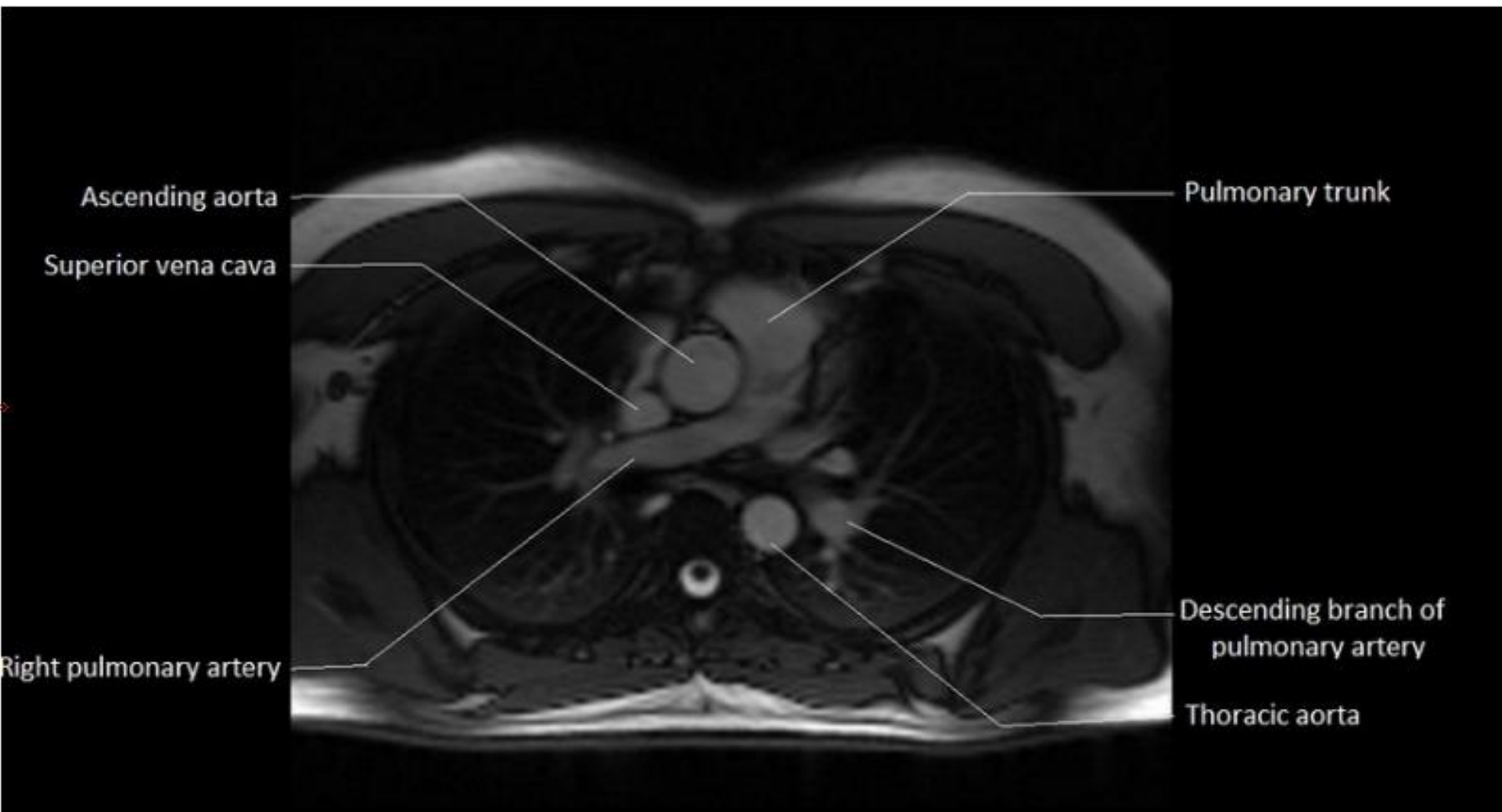
inferior pulmonary vein (left)

Thoracic aorta

Ascending aorta
Right atrium
Superior vena cava
Descending branch of pulmonary artery
superior pulmonary vein (Right)



Pulmonary trunk
Superior pulmonary vein (left)
inferior pulmonary vein (left)
Descending branch of pulmonary artery
Thoracic aorta



Ascending aorta

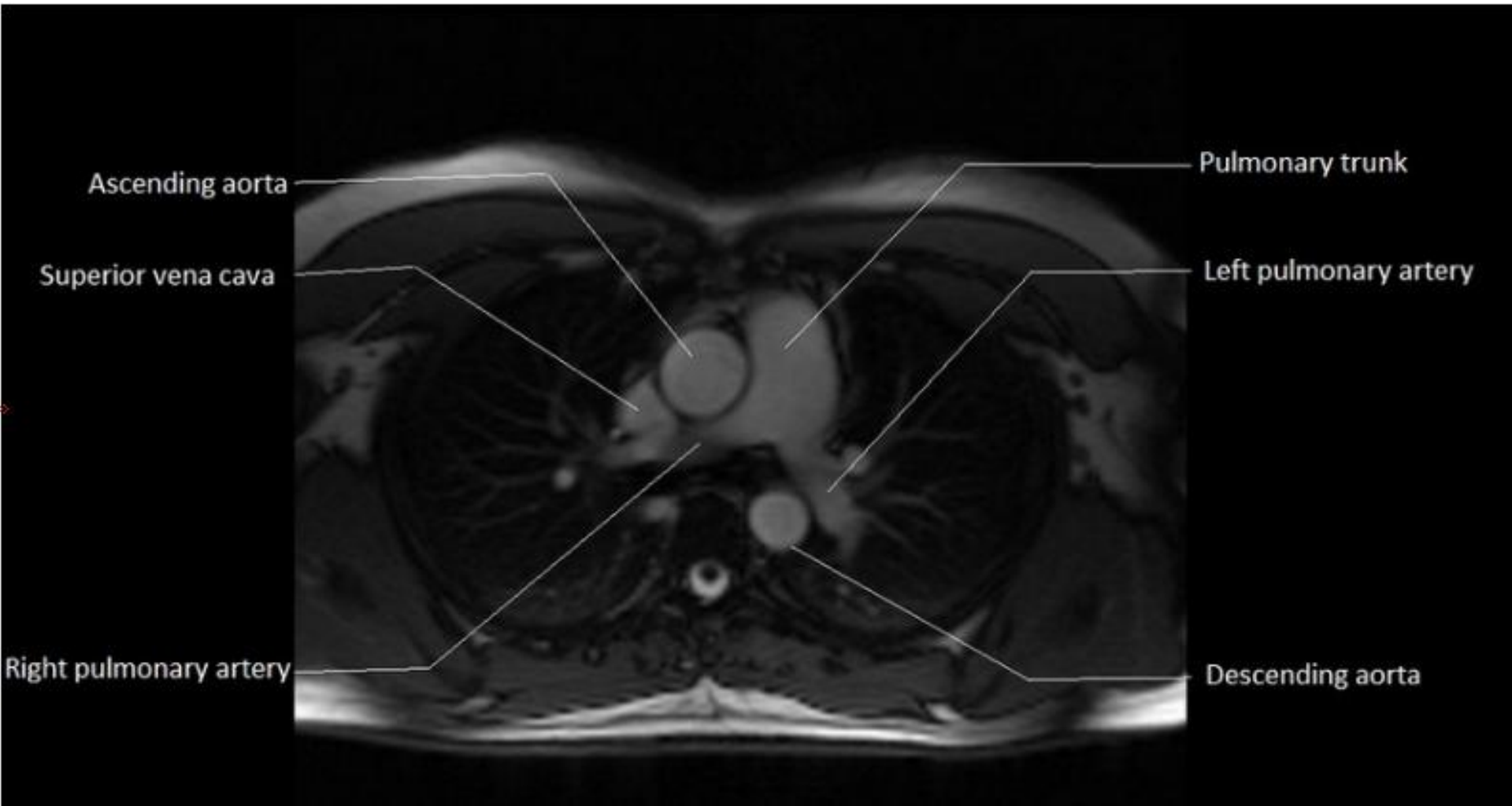
Superior vena cava

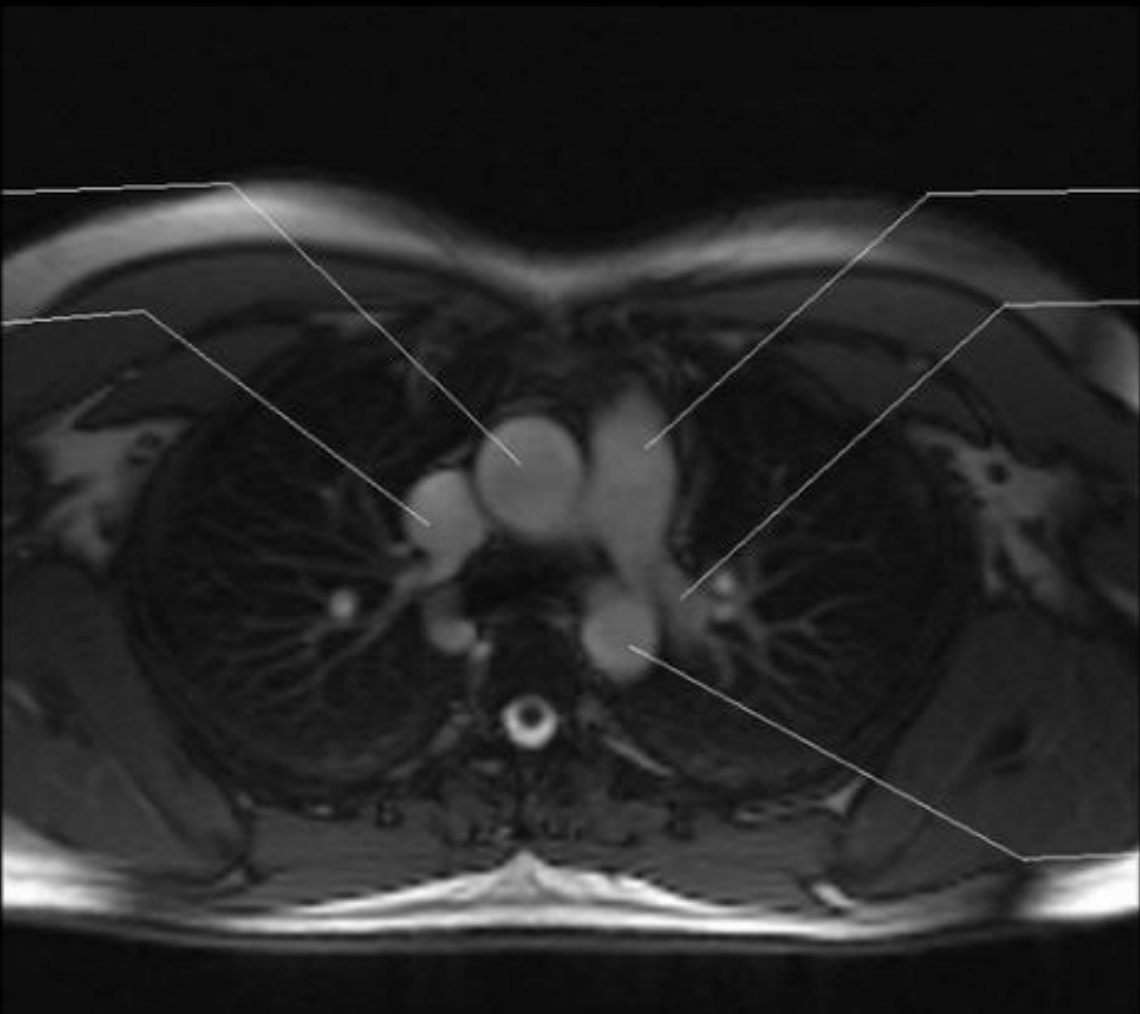
Right pulmonary artery

Pulmonary trunk

Descending branch of
pulmonary artery

Thoracic aorta





Ascending aorta

Superior vena cava

Pulmonary trunk

Left pulmonary artery

Descending aorta

Superior vena cava

Arch of aorta

Pulmonary trunk

Apical posterior branch

Apical posterior branch



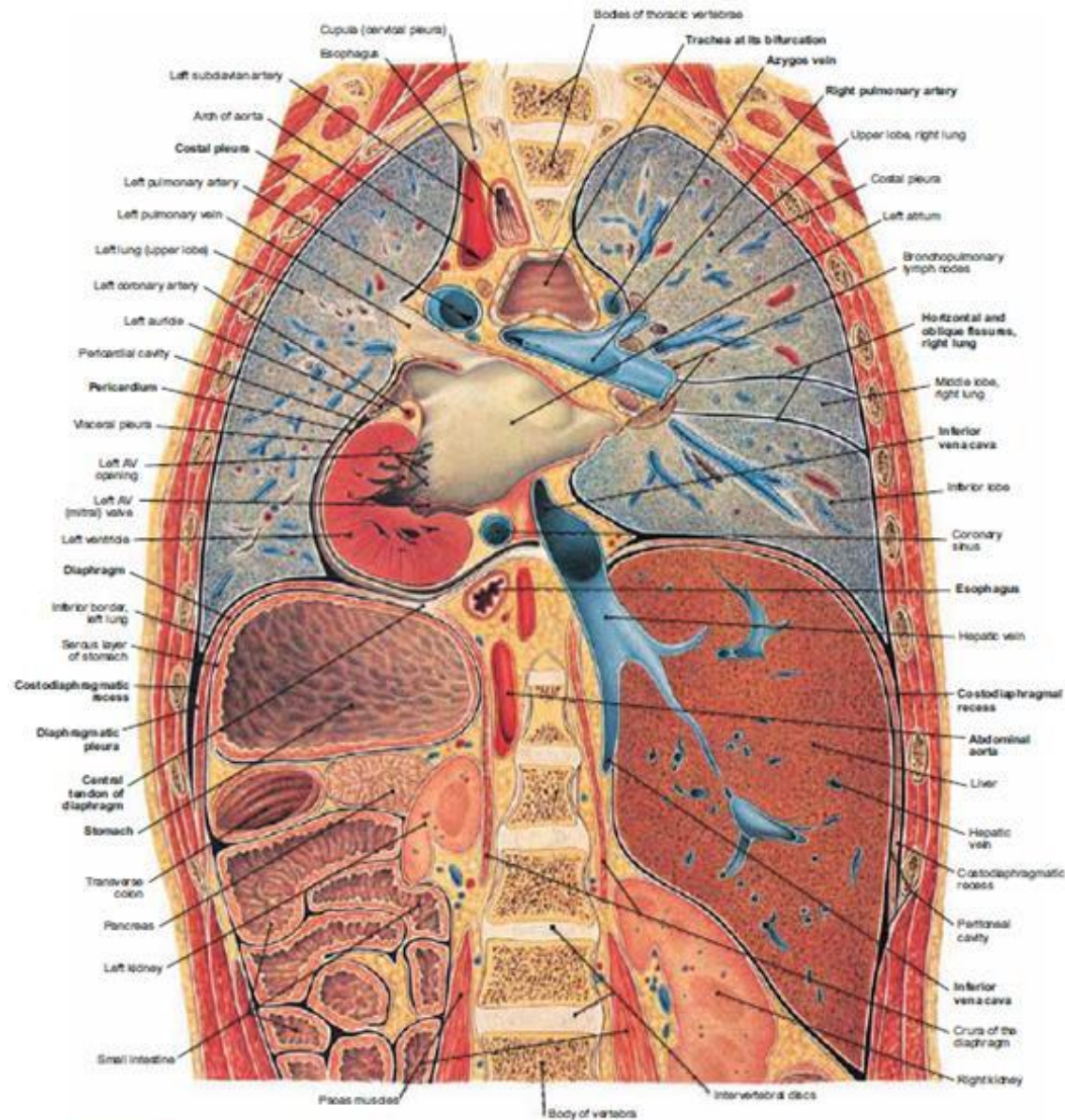
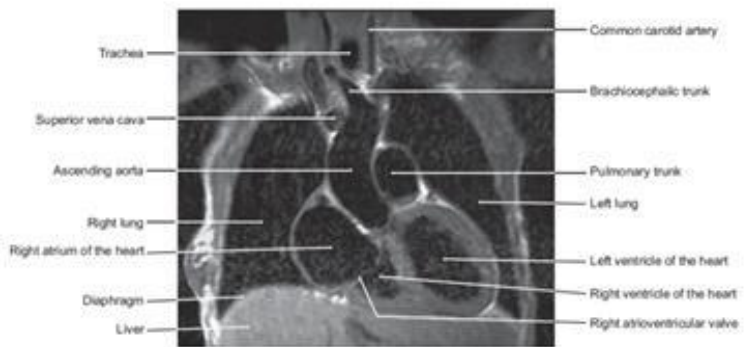
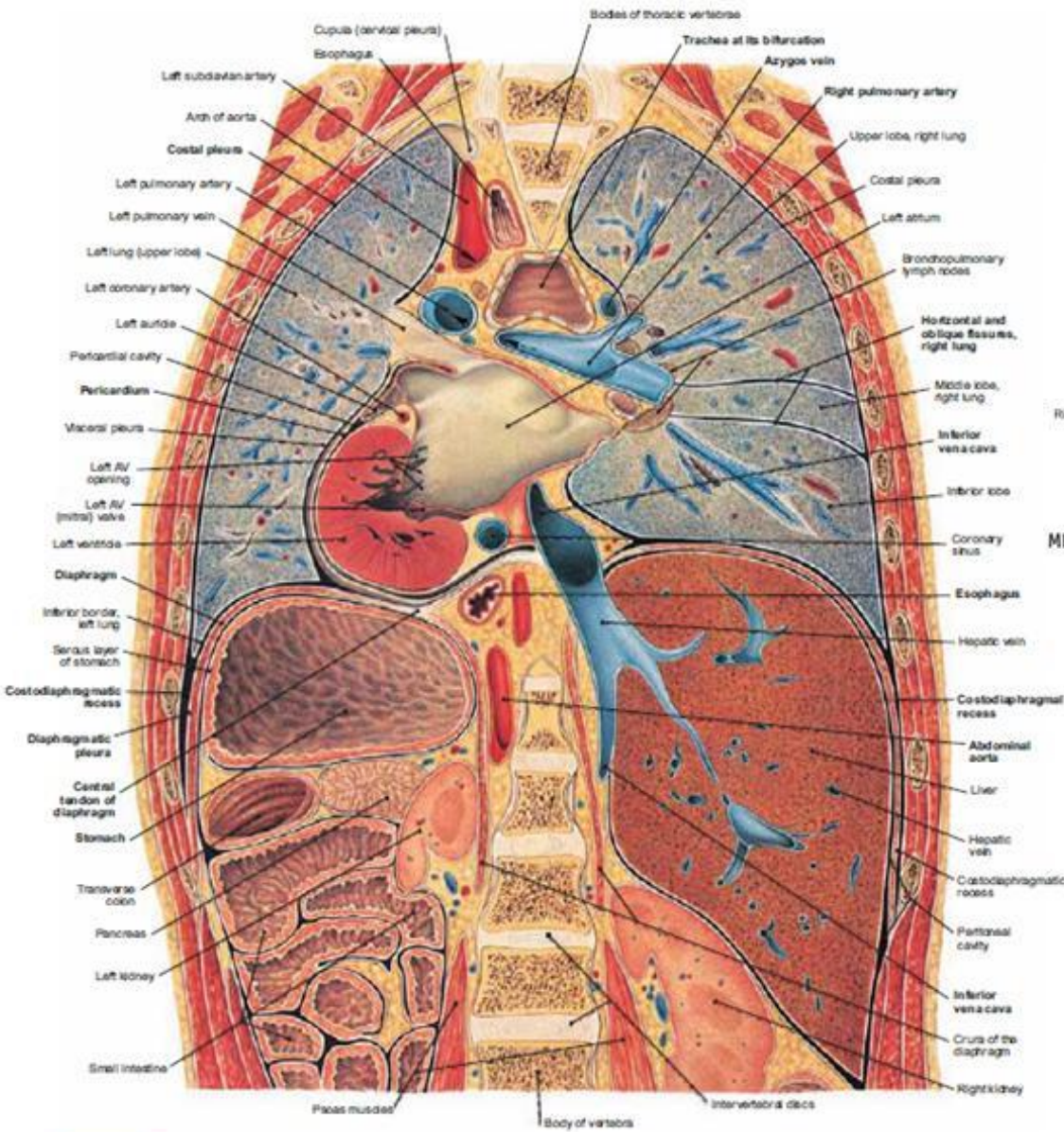


FIGURE 196 Frontal Section of the Thorax and Abdomen from Behind (Dorsal View)

- NOTE: (1) From this dorsal view, the right side of the specimen is on the reader's right. The pulmonary arteries and their branches are shown in blue, as are veins (such as the hepatic veins) that also carry blood with low levels of oxygen saturation.
- (2) The anteroposterior plane of this frontal section in the thorax lies through the inferior vena cava and in front of the descending aorta. The esophagus is seen only in the superior mediastinum and at its entrance into the abdomen just below the diaphragm, while the trachea has been cut at its point of bifurcation.

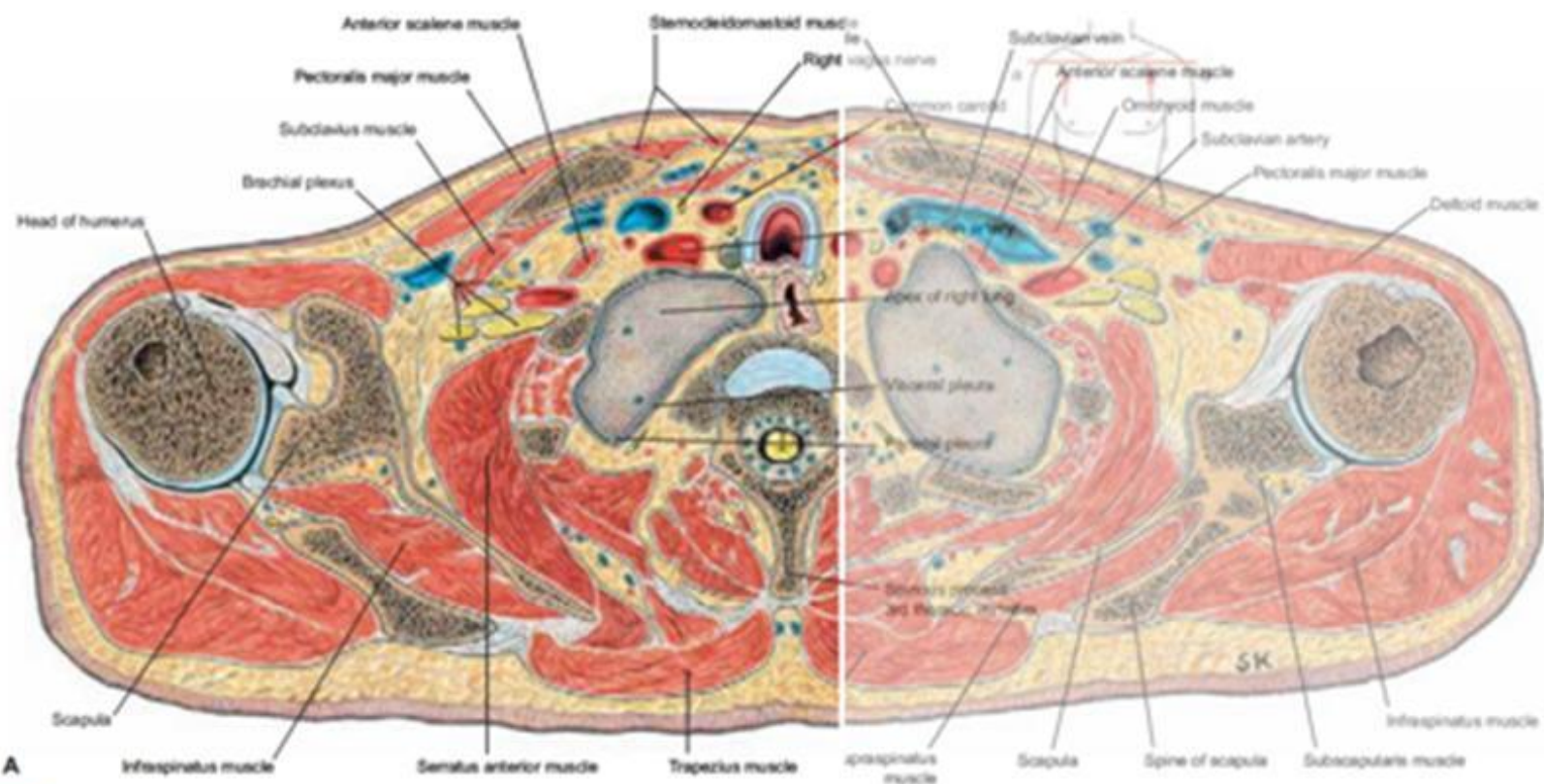


MRI of Thorax at the Level of the Superior Vena Cava (Anterior View)

FIGURE 196 Frontal Section of the Thorax and Abdomen from Behind (Dorsal View)

NOTE: (1) From this dorsal view, the right side of the specimen is on the reader's right. The pulmonary arteries and their branches are shown in blue, as are veins (such as the hepatic veins) that also carry blood with low levels of oxygen saturation.

(2) The anteroposterior plane of this frontal section in the thorax lies through the inferior vena cava and in front of the descending aorta. The esophagus is seen only in the superior mediastinum and at its entrance into the abdomen just below the diaphragm, while the trachea has been cut at its point of bifurcation.



A 14A Right Side of Body



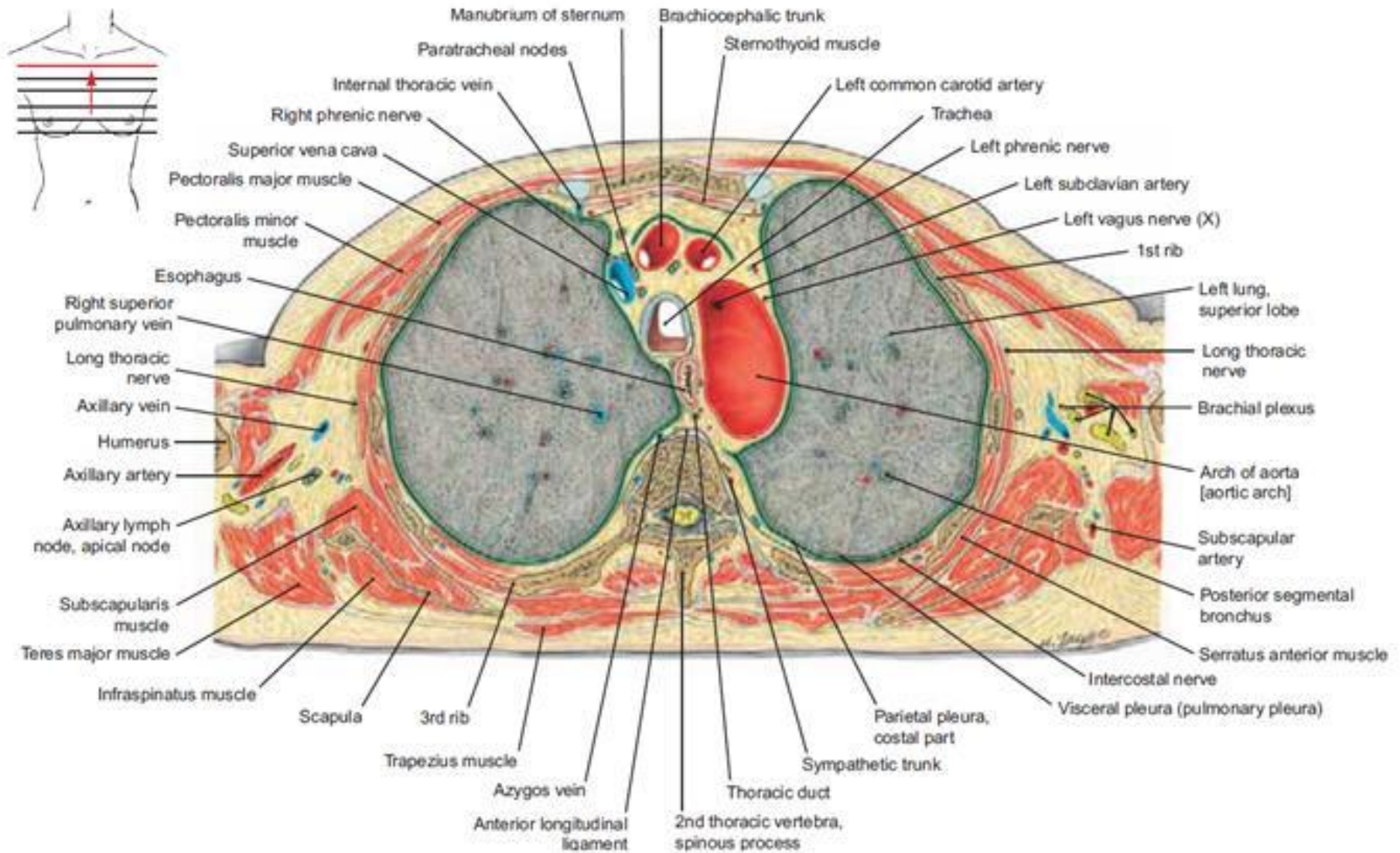


FIGURE 215.1 Horizontal Section through the Thorax at the Level of the Arch of the Aorta (Caudal View)

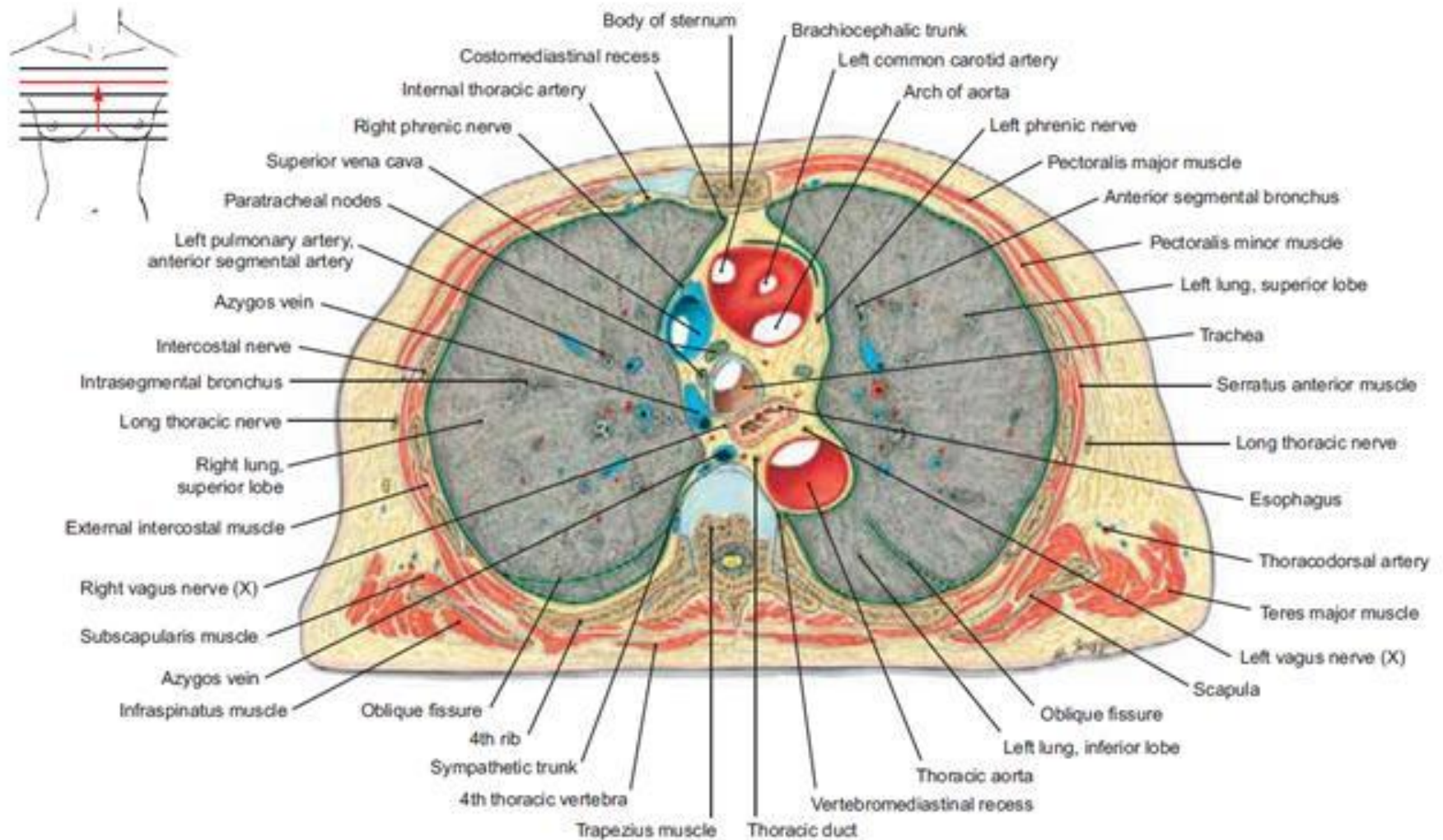


FIGURE 215.2 Horizontal Section through the Thorax at the Level of the Fourth Thoracic Vertebra (Caudal View)

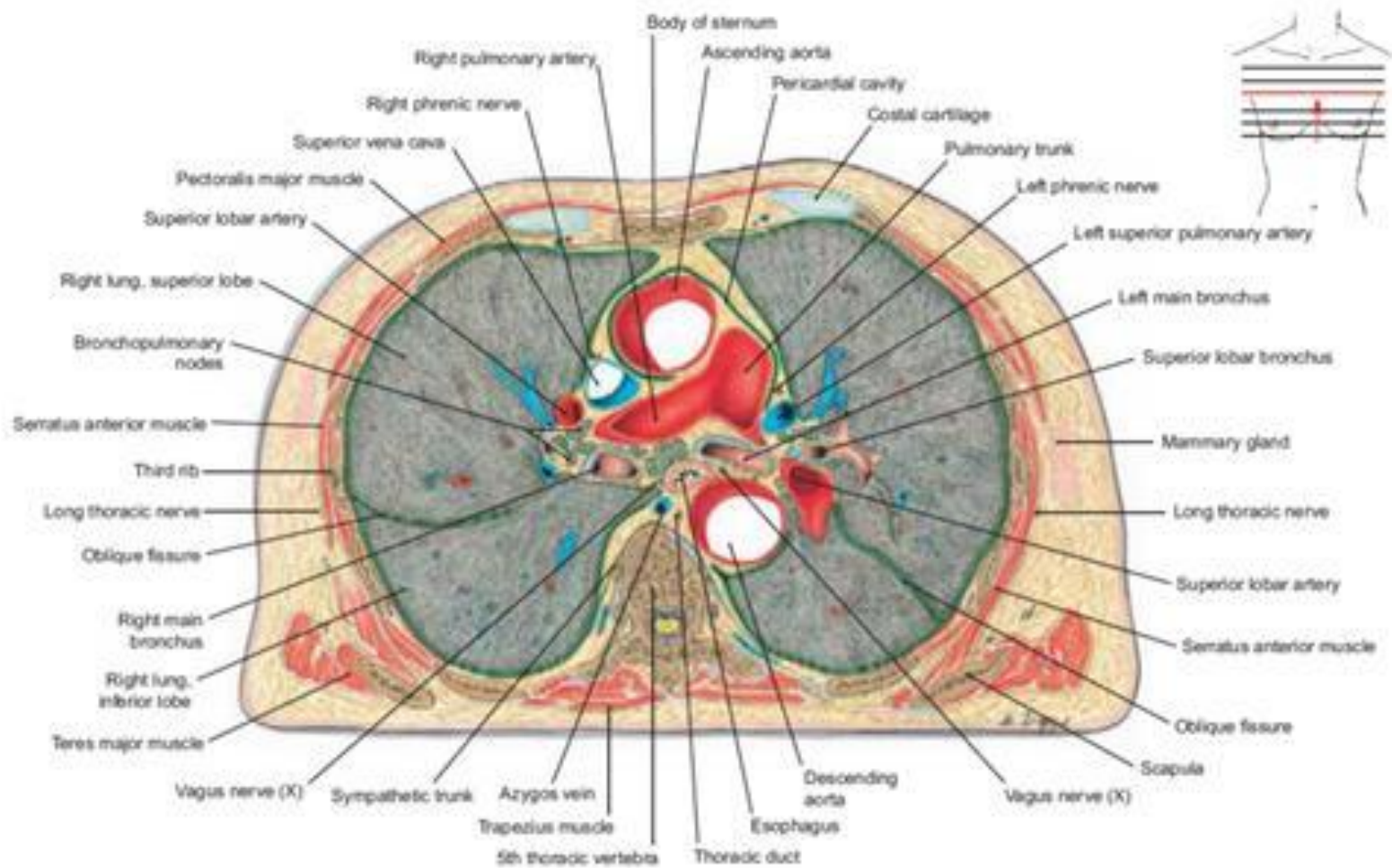


FIGURE 216.1 Horizontal Section through the Thorax at the Bifurcation of the Pulmonary Trunk (Caudal View)

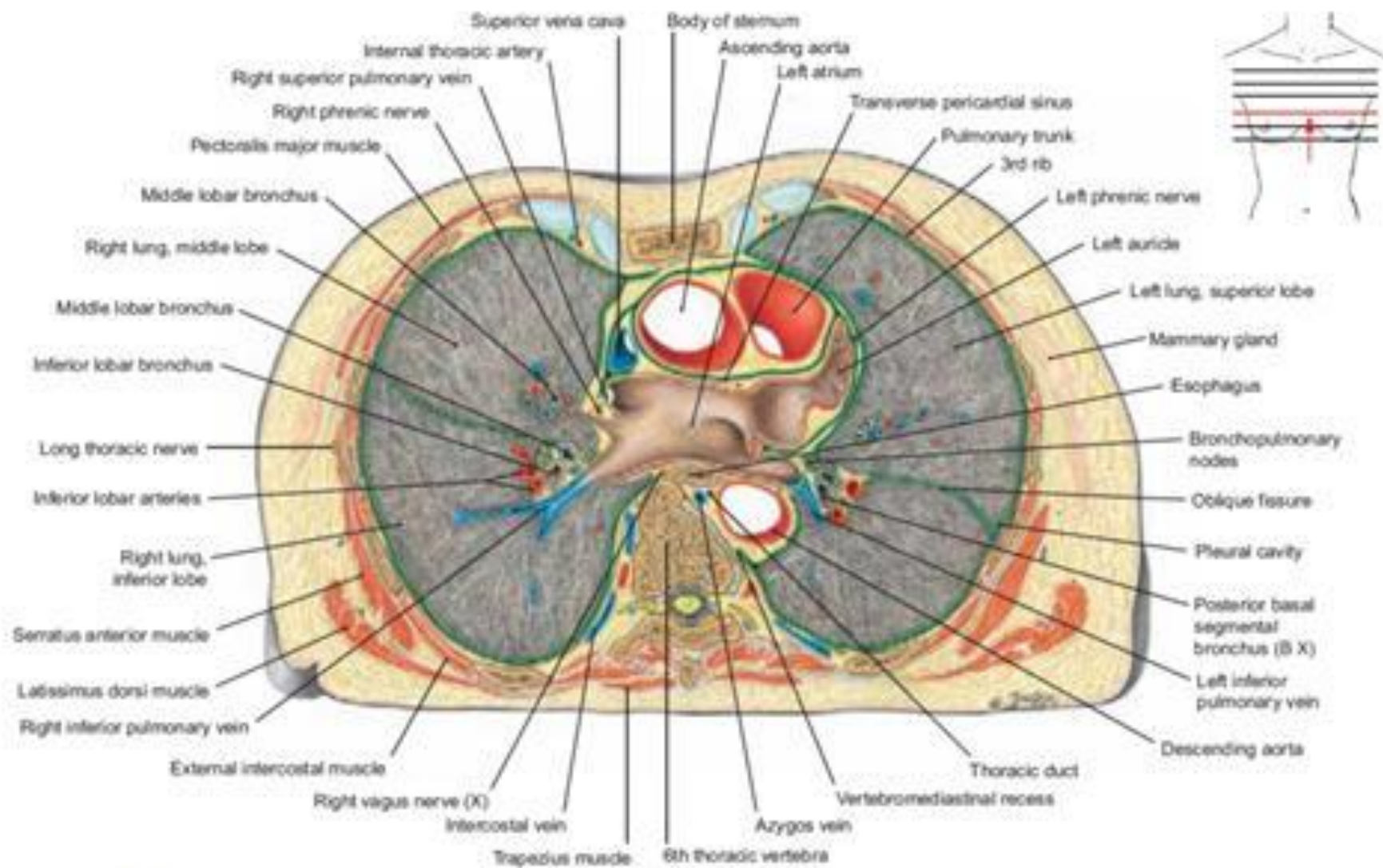


FIGURE 216.2 Horizontal Section through the Thorax at the Level of the Left Atrium (Caudal View)

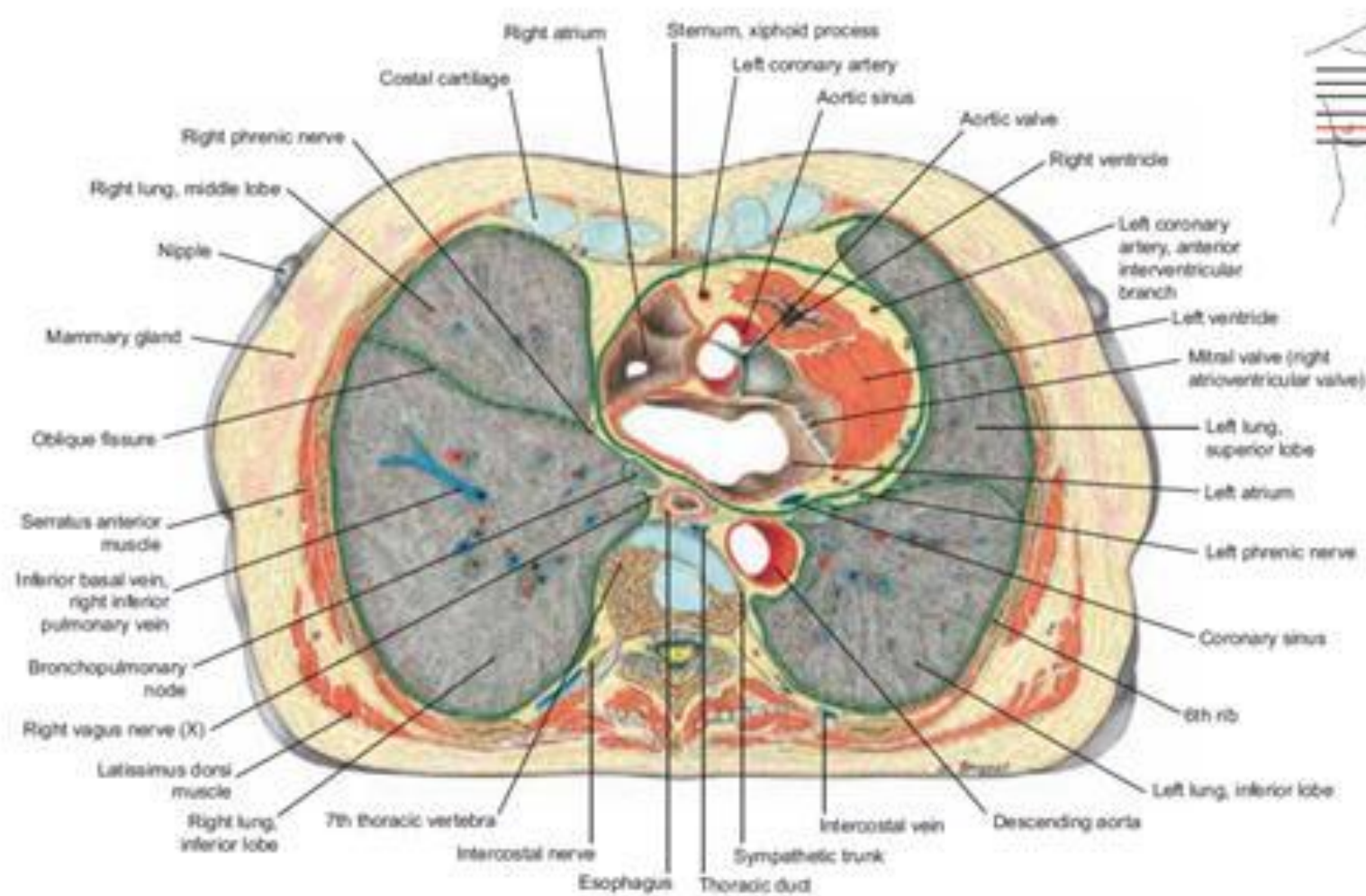


FIGURE 217.1 Horizontal Section through the Thorax at the Level of the Seventh Thoracic Vertebra (Caudal View)

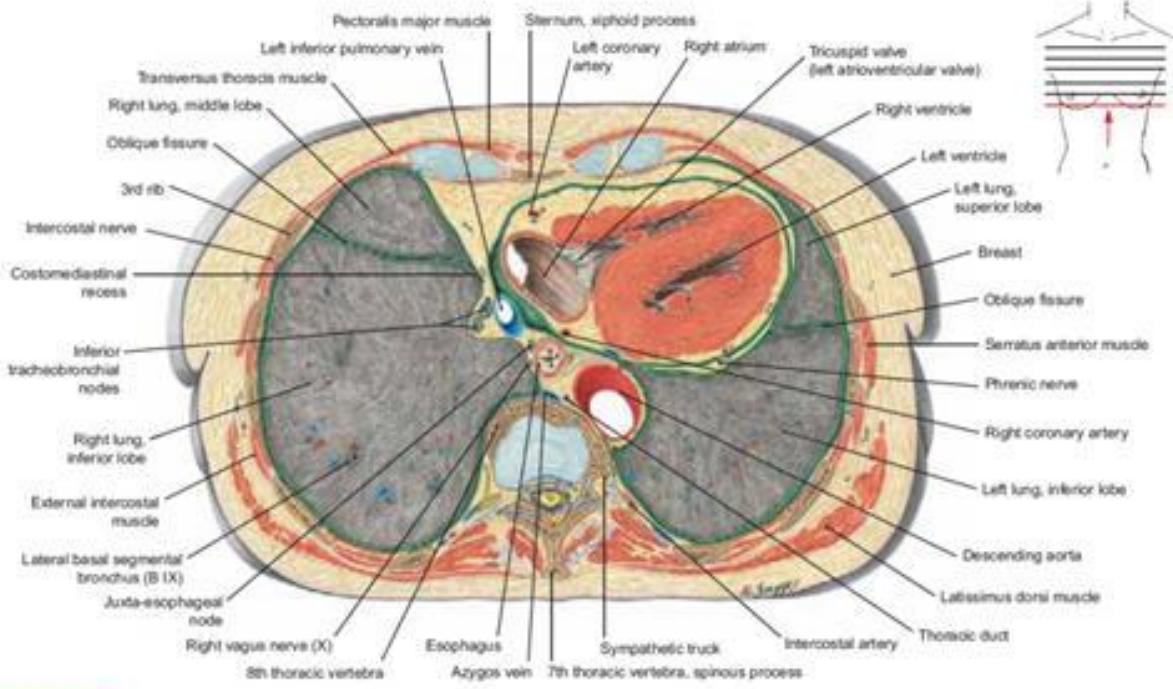


FIGURE 217.2 Horizontal Section through the Thorax at the Level of the Eighth Thoracic Vertebra (Caudal View)

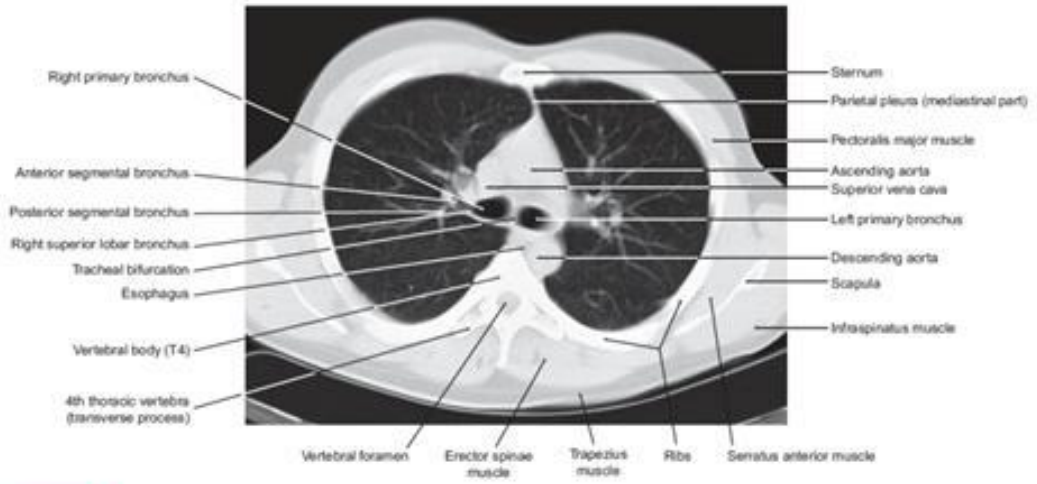
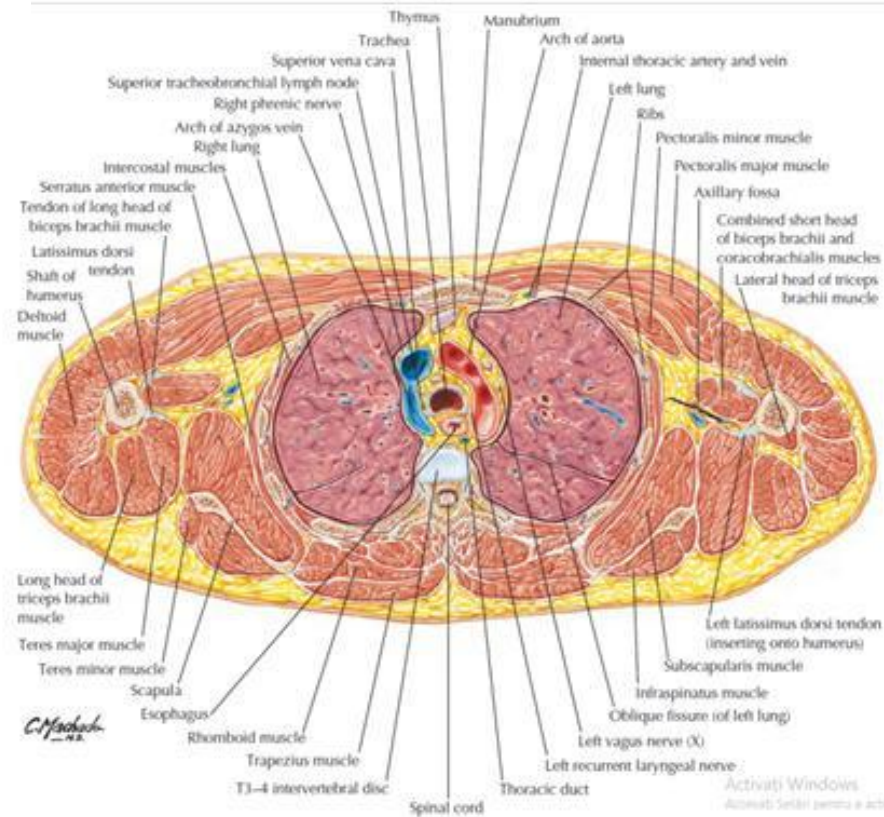
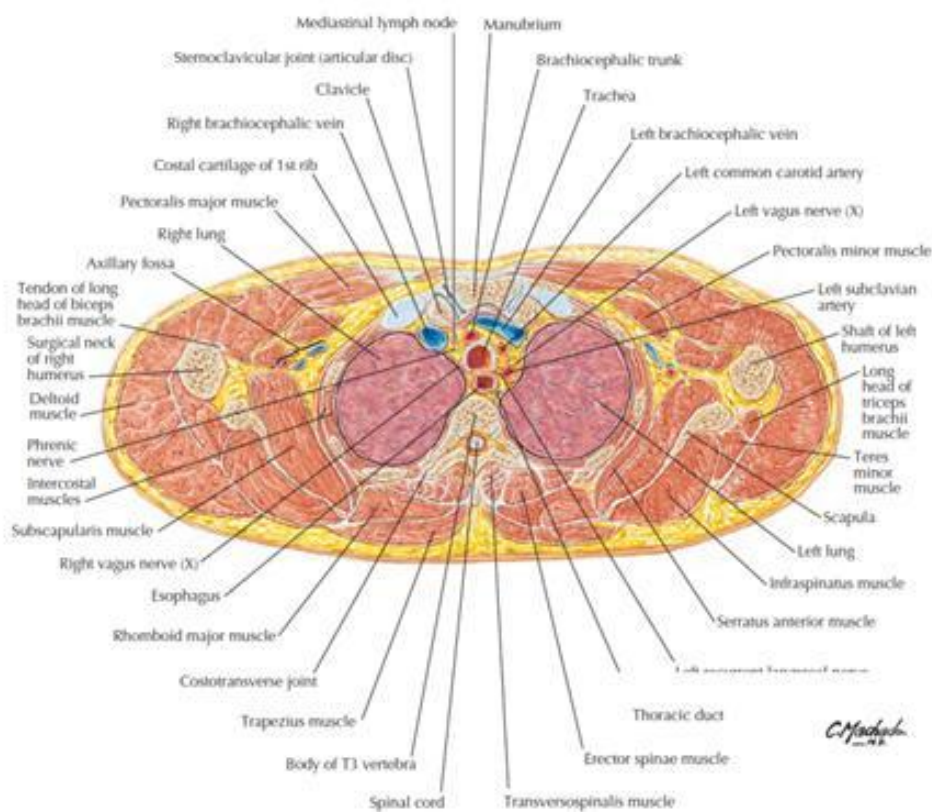


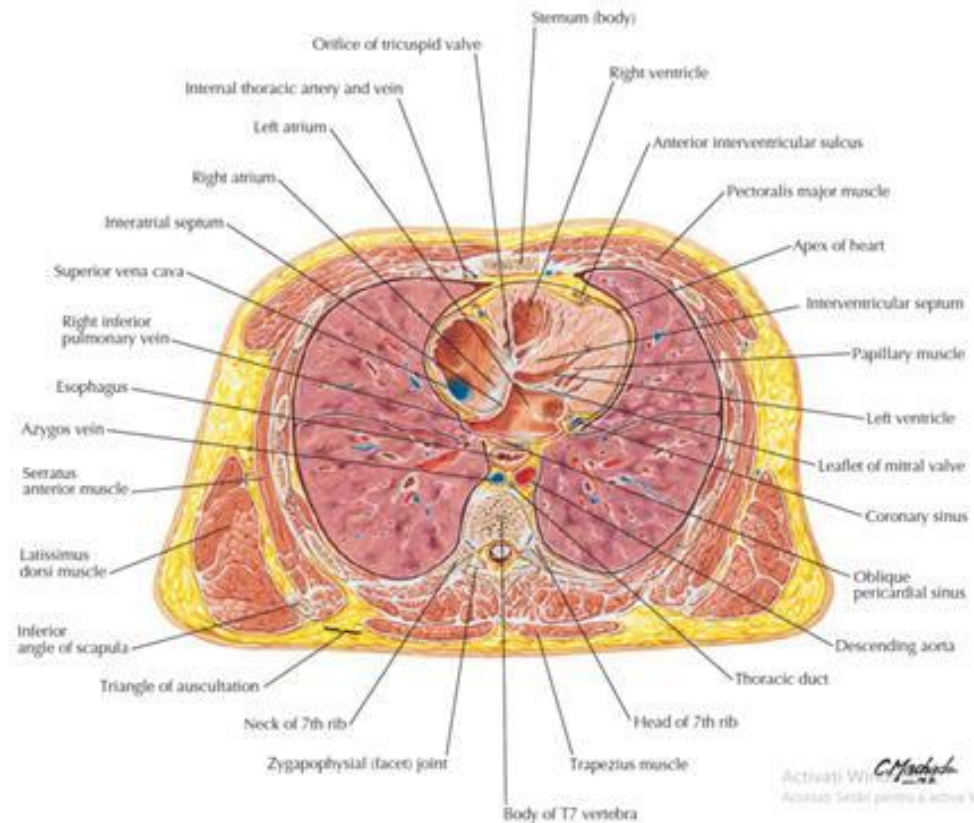
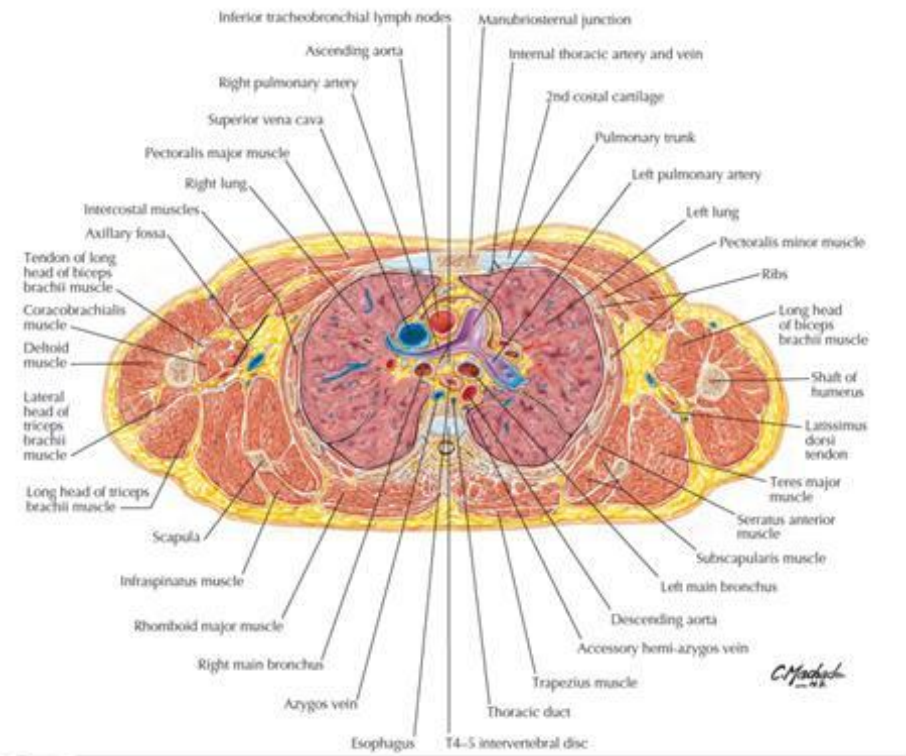
FIGURE 218.1 Computed Tomographic Cross Section of the Thorax

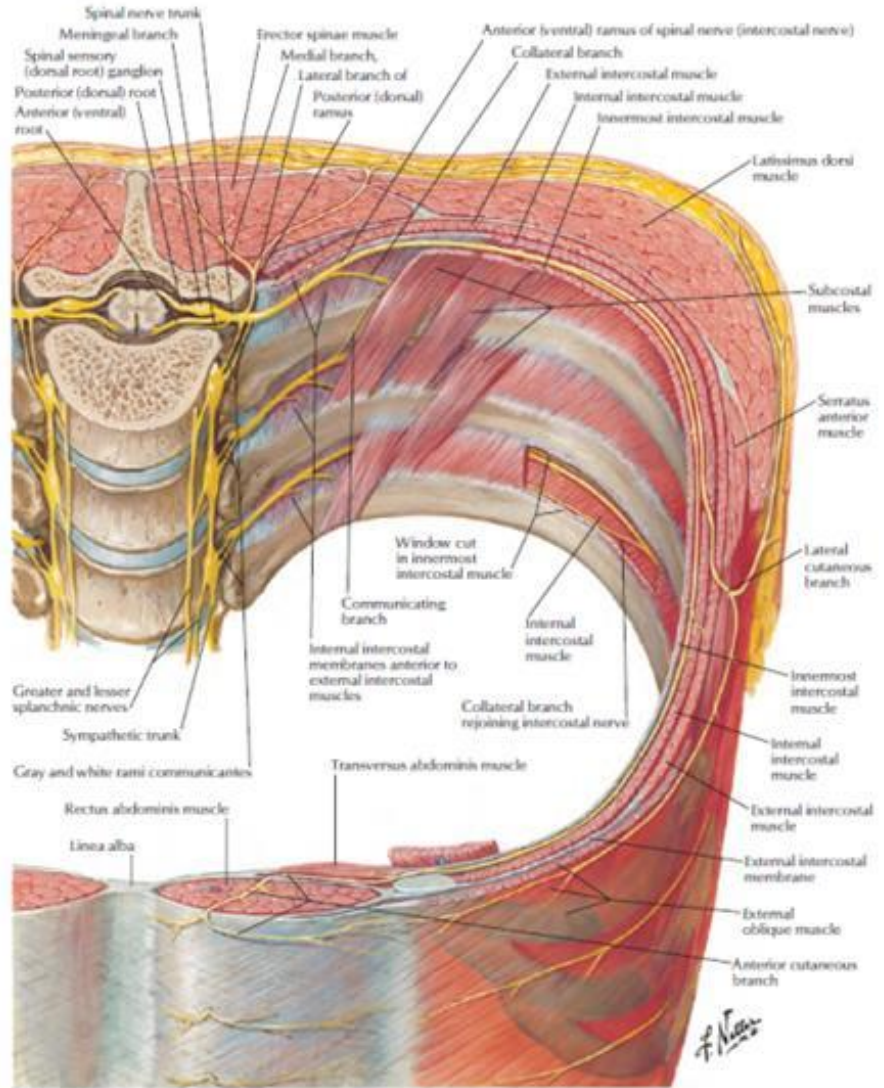
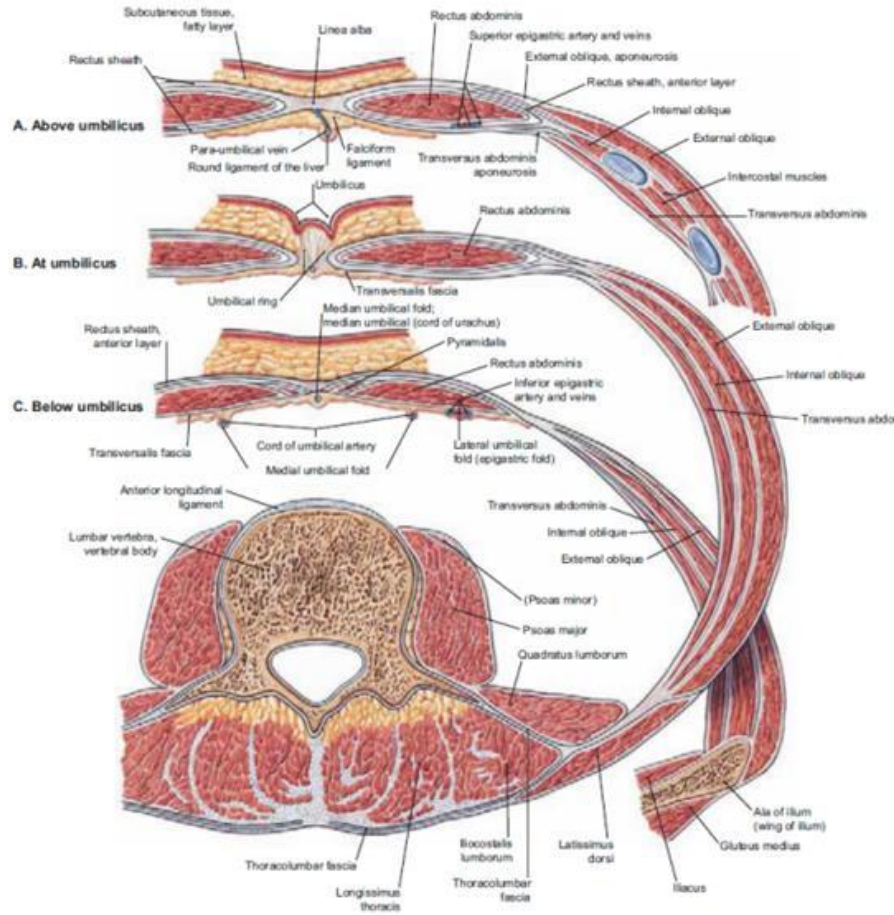
NOTE that this CT is just inferior to the bifurcation of the trachea.



C. Machado

C. Machado





F. Netter